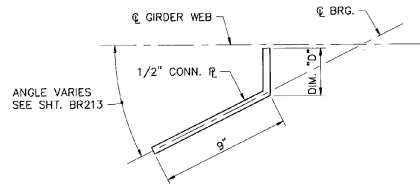
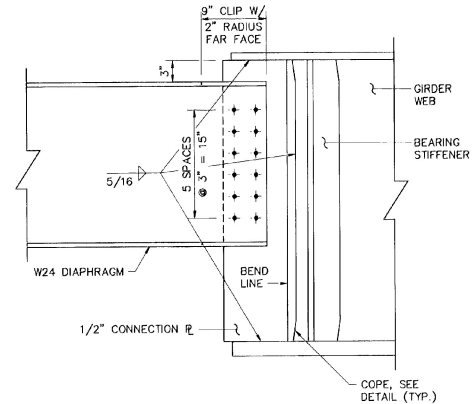


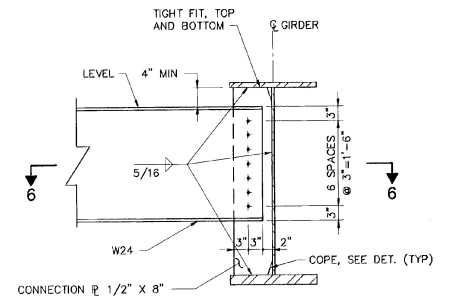
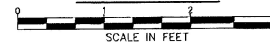
	DIMENSION "D"	
	ABUT. NO. 1	ABUT. NO. 2
G1	2 3/4"	3 7/16"
G2	2 7/8"	3 9/16"
G3	3"	3 11/16"
G4	3 1/8"	3 7/8"
G5	3 1/4"	4"
G6	3 3/8"	4 1/8"



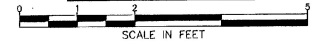
**ABUTMENT CONNECTION  
PLATE DETAIL**



**ABUTMENT DIAPHRAGM  
CONNECTION DETAIL  
SECTION 6A-6A**

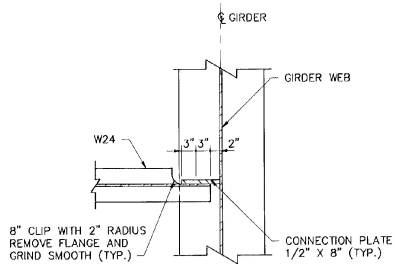


**INTERMEDIATE DIAPHRAGM  
CONNECTION DETAIL**

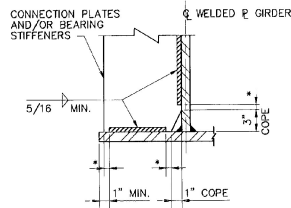
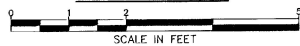


**NOTES :**

1. ALL CONNECTIONS SHALL BE MADE USING 7/8" DIAMETER AASHTO M164 BOLTS. ALL HOLES IN THE DIAPHRAGMS SHALL BE 15/16" DIA. ALL HOLES IN THE CONNECTOR PLATES SHALL BE 1" DIA. EXCEPT THE CONNECTOR PLATES AT THE SET OF INTERMEDIATE DIAPHRAGMS CLOSEST TO THE ABUTMENTS SHALL HAVE 1 1/8" DIA. HOLES.
2. INTERMEDIATE DIAPHRAGM BOLTS SHALL ONLY BE SNUG TIGHT UNTIL AFTER THE ENTIRE DECK HAS BEEN PLACED.
3. FOR LOCATION OF DETAIL C, SEE SHEET BR213.
4. FOR LENGTH OF DIMENSION "C", SEE SHEET BR213.

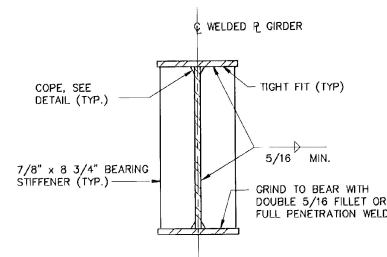


**SECTION 6-6**



\* NO WELD FOR 1/4" MIN., 1/2" MAX EXCEPT MUST MAINTAIN 1" MIN. FROM EDGE OF FLANGE

**WELD TERMINATION  
AND COPING DETAIL**



**ABUTMENT BEARING STIFFENERS**

NOT TO SCALE



BARNES AND JARNIS, INC.  
CONSULTING ENGINEERS  
25 STUART STREET, 6TH FL.  
BOSTON, MASSACHUSETTS

**STATE OF VERMONT  
AGENCY OF TRANSPORTATION**

Town Of	WALLINGFORD	Bridge No.	80
Highway No.	U.S. ROUTE 7	Log. Sta.	
U.S. ROUTE 7 OVER RAILROAD GIRDER AND DIAPHRAGM DETAILS			
Designed By	GRI	Drawn By	RUL/JNC
Checked By	Date	Bridge Design Supervisor	Date
EMM	4/95	EMM	4/95
PROJECT	WALLINGFORD	PROJECT NO.	BR5 0137 (13)
I.G.C. Info.			
Bridge Sheet No.	BR215	Sheet	75 of 113