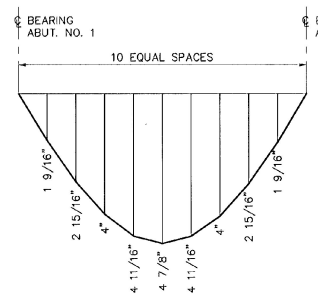
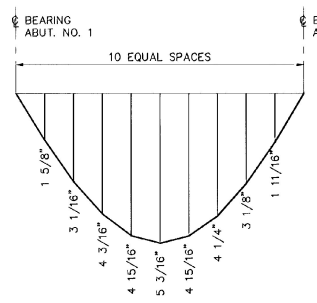


GIRDER ELEVATION
NOT TO SCALE

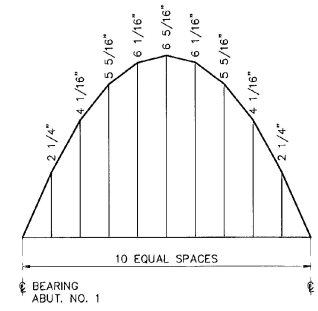
** CVN = CHARPY V-NOTCH TEST



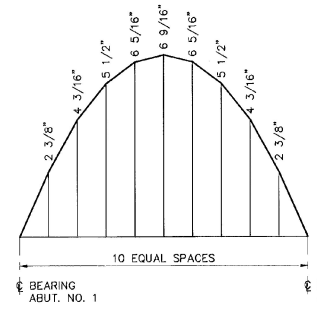
G1 & G6



G2, G3, G4 & G5



G1 & G6



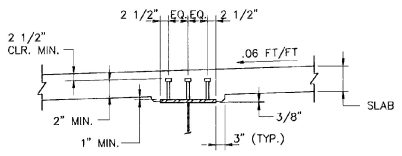
G2, G3, G4 & G5

DEAD LOAD DEFLECTION DIAGRAMS
NOT TO SCALE

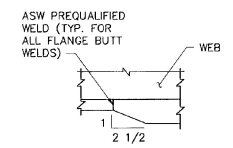
CAMBER DIAGRAMS
NOT TO SCALE

NOTES :

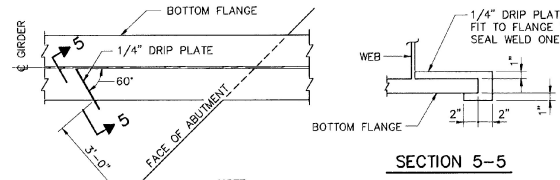
1. FOR STEEL NOTES, SEE SH. BR213.
2. FOR GIRDER SPAN LENGTHS, SEE SH. BR213.



TYPICAL GIRDER HAUNCH AND SHEAR CONNECTOR DETAIL
UNLESS NOTED OTHERWISE
NOT TO SCALE



DETAIL D
N.T.S.



SECTION 5-5

NOTE: DRIP PLATES SHALL BE PLACED ON OUTSIDE EDGE OF FASCIA GIRDERS ON THE HIGH SIDE OF ABUTMENTS OR AS INDICATED ON PLANS.

DRIP PLATE DETAIL
NOT TO SCALE

| | | | |
|-----------------------------------|--------------|--------------------------|---------------|
| STATE OF VERMONT | | | |
| AGENCY OF TRANSPORTATION | | | |
| Town Of | WALLINGFORD | Bridge No. | 80 |
| Highway No. | U.S. ROUTE 7 | Log Sta. | |
| | | Surv. Sta. | |
| U.S. ROUTE 7 OVER RAILROAD | | | |
| GIRDER ELEVATION | | | |
| Designed By | GRI | Drawn By | R.L. |
| Checked By | EMM | Date | 4/95 |
| | | Bridge Design Supervisor | EMM |
| | | Date | 4/95 |
| PROJECT | WALLINGFORD | PROJECT NO. | BRS 0137 (13) |
| I.G.C. Info. | | | |
| Bridge Sheet No. | BR214 | Sheet | 74 of 113 |

B&J BARNES AND JARNIS, INC.
CONSULTING ENGINEERS
25 STUART STREET, 6TH FL.
BOSTON, MASSACHUSETTS