

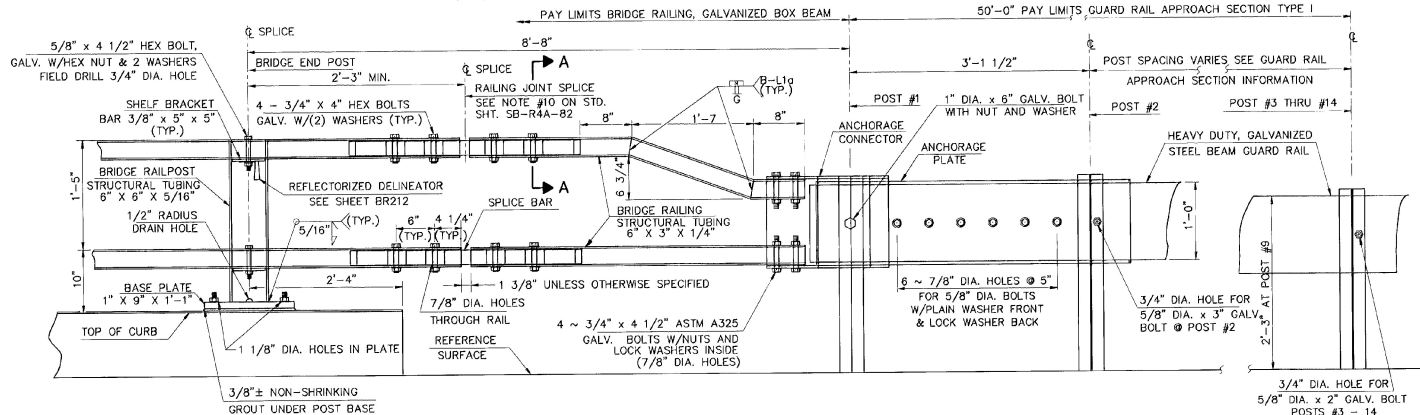
PLAN
N.T.S.

GUARD RAIL
APPROACH SECTION
TYPE I

POST NO.	SPACING
1	3'-1 1/2"
2	3'-1 1/2"
3	3'-1 1/2"
4	3'-1 1/2"
5	3'-1 1/2"
6	3'-1 1/2"
7	3'-1 1/2"
8	3'-1 1/2"
9	4'-2"
10	4'-2"
11	4'-2"
12	6'-3"
13	6'-3"
14	6'-3"

50'-0" PAY LENGTH GUARD RAIL APPROACH SECTION, TYPE I

FOR ADDITIONAL DETAILS OF BRIDGE RAILING, GALVANIZED BOX BEAM, SEE STD. DWGS. SB-R4A-82 AND SB-R4B-82



ELEVATION
N.T.S.

NOTES:

- FOR ADDITIONAL INFORMATION ON THE CONNECTION/TRANSITION DETAILS AT POST NO. 1, SEE SHEET BR212.
- FOR SECTION A-A, SEE STANDARD SHEET SB-R4A-82.

STATE OF VERMONT
AGENCY OF TRANSPORTATION

Town Of	WALLINGFORD	Bridge No.	80
Highway No.	U.S. ROUTE 7	Log Sta.	
		Surv. Sta.	
U.S. ROUTE 7 OVER RAILROAD			
BRIDGE RAILING TRANSITION SECTION @ ABUT. #2			
Designed By	GRI	Drawn By	VAOT
Checked By	TJC	Date	4/95
		Bridge Design Supervisor	EMM
		Date	4/95
PROJECT	WALLINGFORD	PROJECT NO.	BRS 0137 (13)
I.G.C. Info.			
Bridge Sheet No.	BR211	Sheet	71 of 113



BARNES AND JARNIS, INC.
CONSULTING ENGINEERS
25 STUART STREET, 6TH FL.
BOSTON, MASSACHUSETTS