

PLAN
N.T.S.

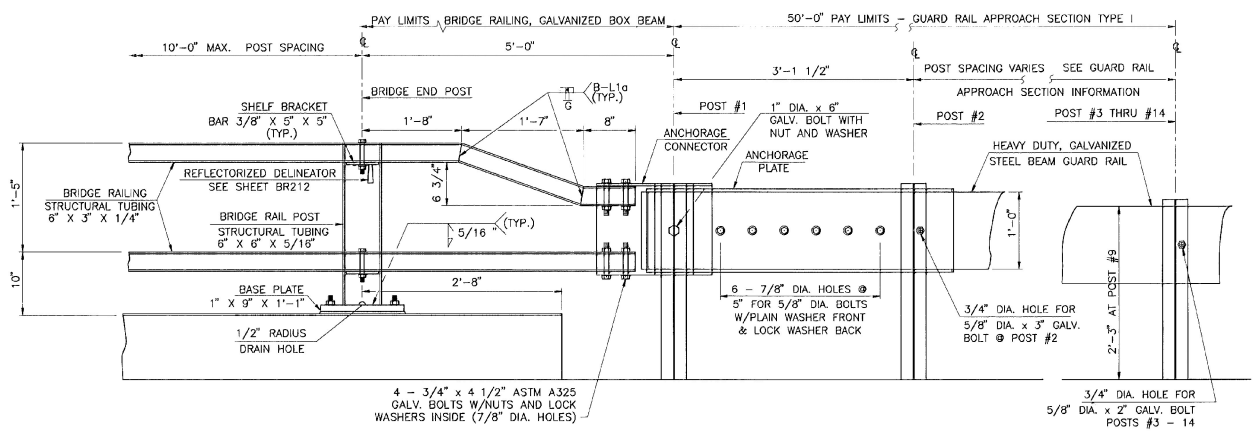
**GUARD RAIL
APPROACH SECTION
TYPE I**

| POST NO. | SPACING |
|----------|-----------|
| 1 | 3'-1 1/2" |
| 2 | 3'-1 1/2" |
| 3 | 3'-1 1/2" |
| 4 | 3'-1 1/2" |
| 5 | 3'-1 1/2" |
| 6 | 3'-1 1/2" |
| 7 | 3'-1 1/2" |
| 8 | 3'-1 1/2" |
| 9 | 4'-2" |
| 10 | 4'-2" |
| 11 | 4'-2" |
| 12 | 6'-3" |
| 13 | 6'-3" |
| 14 | 6'-3" |

50'-0" PAY LENGTH GUARD RAIL
APPROACH SECTION, TYPE I

NOTES :

- FOR ADDITIONAL INFORMATION ON THE CONNECTION/ TRANSITION DETAILS AT POST NO. 1, SEE SHEET BR212.
- FOR ADDITIONAL DETAILS OF BRIDGE RAILING, GALVANIZED BOX BEAM, SEE STD. DWGS. SB-R4A-82 AND SB-R4B-82.



ELEVATION
N.T.S.

**STATE OF VERMONT
AGENCY OF TRANSPORTATION**

| | | | |
|---|--------------|--------------------------|---------------|
| Town Of | WALLINGFORD | Bridge No. | 80 |
| Highway No. | U.S. ROUTE 7 | Log Sta. | |
| | | Surv. Sta. | |
| U.S. ROUTE 7 OVER RAILROAD | | | |
| BRIDGE RAILING TRANSITION DETAILS @ ABUT. #1 | | | |
| Designed By | GRI | Drawn By | VAOT |
| Checked By | TJC | Date | 4/95 |
| | | Bridge Design Supervisor | EMM Date 4/95 |
| PROJECT | WALLINGFORD | PROJECT NO. | BRS 0137 (13) |
| I.G.C. Info. | | | |
| Bridge Sheet No. | BR210 | Sheet | 70 of 113 |

B&J BARNES AND JARNIS, INC.
CONSULTING ENGINEERS
25 STUART STREET, 6TH FL.
BOSTON, MASSACHUSETTS