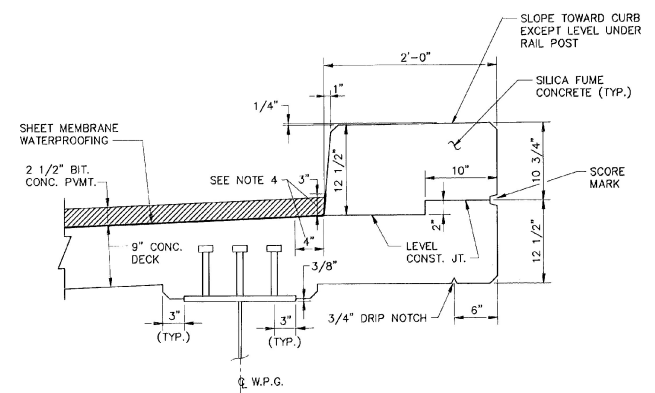
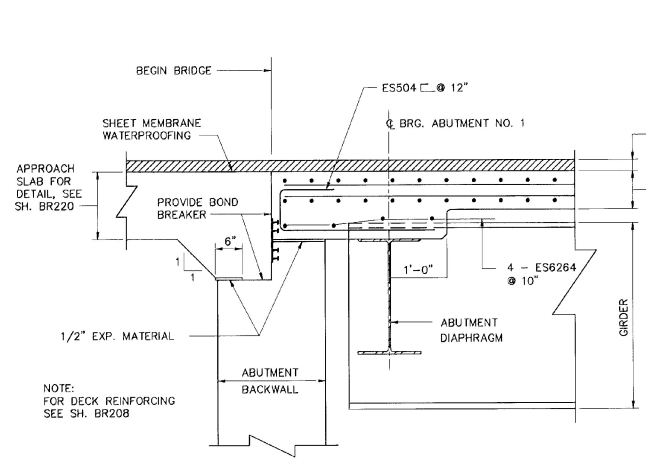


TYPICAL BRIDGE SECTION
SCALE IN FEET

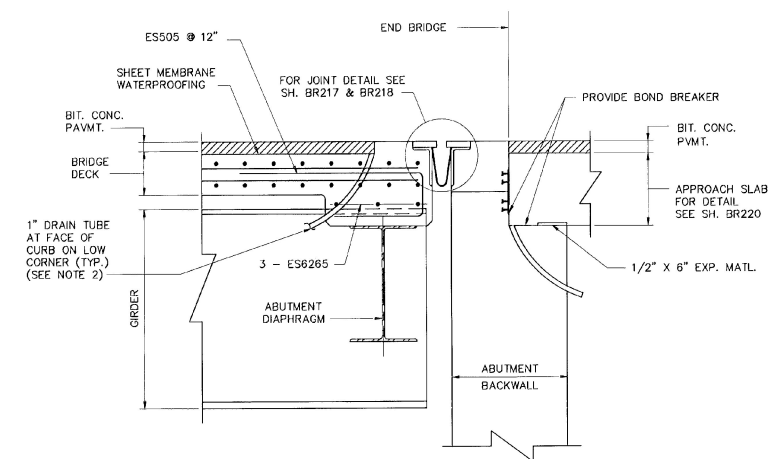


TYPICAL 2'-0\"/>SCALE IN FEET

- NOTES :**
- ALL SUPERSTRUCTURE REINFORCING STEEL SHALL BE EPOXY COATED.
 - 1" ϕ PLASTIC TUBE, THE COST OF WHICH IS SUBSIDIARY TO THE ITEM CONCRETE, CLASS A". CARE SHALL BE TAKEN TO KEEP TUBE CLEAR DURING CONSTRUCTION. THE TOP OF THE TUBE SHALL BE RECESSED 1/4" BELOW THE TOP OF THE CONCRETE DECK, AND THE BOTTOM LOCATED 6" BELOW THE BOTTOM FLANGE OF THE NEAREST GIRDER (LOW SIDE OF THE BRIDGE).
 - FOR SHEAR CONNECTOR DETAILS SEE SH. NO. BR214.
 - INDICATES AREA ALONG DECK AND UP FACE OF CURB FOR PLACEMENT OF 2 COATS OF POLYURETHANE MEMBRANE.
 - POLYURETHANE MEMBRANE AND BLAST CLEANING SHALL BE INCLUDED IN THE UNIT PRICE BID FOR SHEET MEMBRANE WATERPROOFING.
 - SHEET MEMBRANE WATERPROOFING SHALL EXTEND TO FACE OF CURB AS SHOWN.



FIXED END - ABUTMENT NO. 1 (WEST)
TYPICAL SECTION NORMAL TO ABUTMENT
SCALE IN FEET



EXPANSION END - ABUTMENT NO. 2 (EAST)
TYPICAL SECTION NORMAL TO ABUTMENT
SCALE IN FEET

STATE OF VERMONT	
AGENCY OF TRANSPORTATION	
Town Of WALLINGFORD	Bridge No. 80
Highway No. U.S. ROUTE 7	Log Stn.
	Surv. Stn.
U.S. ROUTE 7 OVER RAILROAD	
SUPERSTRUCTURE DETAILS	
Designed By GRI	Drawn By RJL
Checked By EMM	Date 4/95
	Bridge Design Supervisor EMM Date 4/95
PROJECT WALLINGFORD	PROJECT NO. BR5 0137 (13)
I.G.C. Info. 	
Bridge Sheet No. BR207	Sheet 67 of 113

B&J BARNES AND JARNIS, INC.
CONSULTING ENGINEERS
25 STUART STREET, 6TH FL.
BOSTON, MASSACHUSETTS