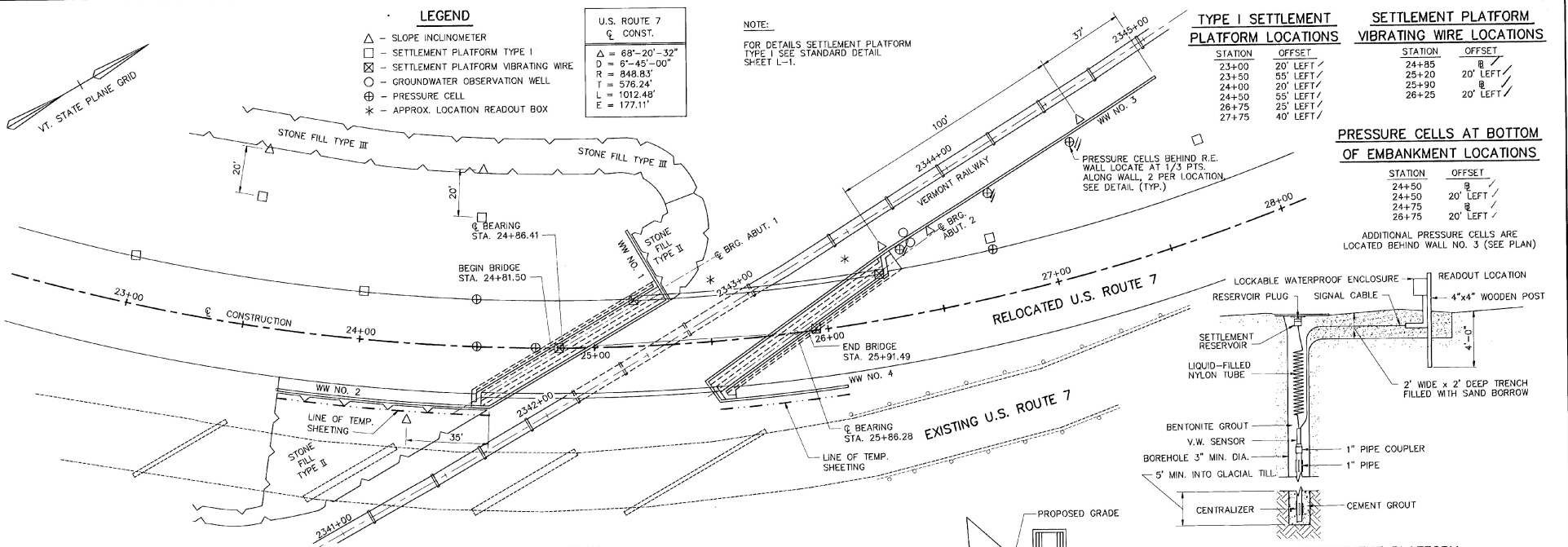


**LEGEND**

- △ - SLOPE INCLINOMETER
- - SETTLEMENT PLATFORM TYPE I
- ⊗ - SETTLEMENT PLATFORM VIBRATING WIRE
- - GROUNDWATER OBSERVATION WELL
- ⊕ - PRESSURE CELL
- \* - APPROX. LOCATION READOUT BOX

U.S. ROUTE 7 CONST.	
Δ = 68°-20'-32"	
D = 6'-45'-00"	
R = 848.83'	
T = 576.24'	
L = 1012.48'	
E = 177.11'	

NOTE:  
FOR DETAILS SETTLEMENT PLATFORM  
TYPE I SEE STANDARD DETAIL  
SHEET L-1.

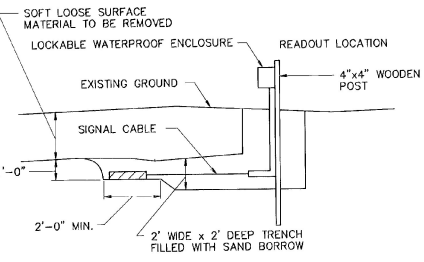


**SLOPE INCLINOMETER LOCATIONS**

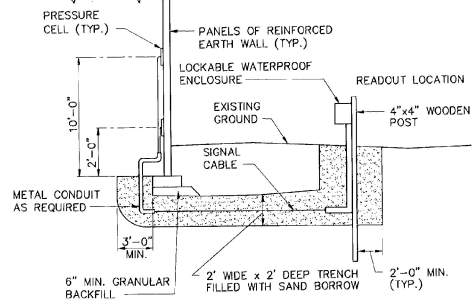
STATION	OFFSET
23+50	75' LEFT
24+22	32' RIGHT
24+50	75' LEFT
26+29	30' LEFT
26+50	32' LEFT
27+28	65' LEFT

**GROUNDWATER OBSERVATION WELL LOCATIONS**

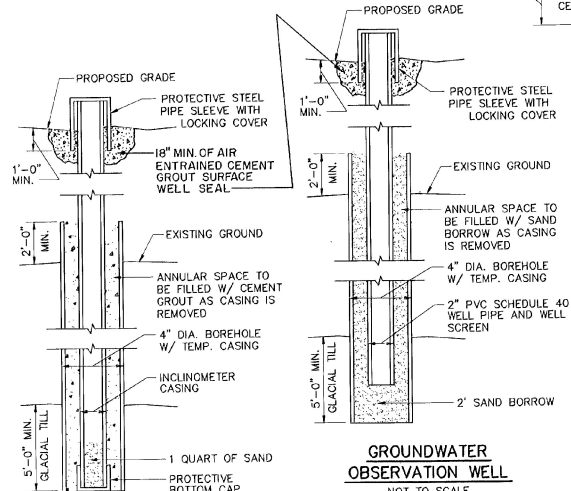
STATION	OFFSET
26+36	35' LEFT
26+38	30' LEFT



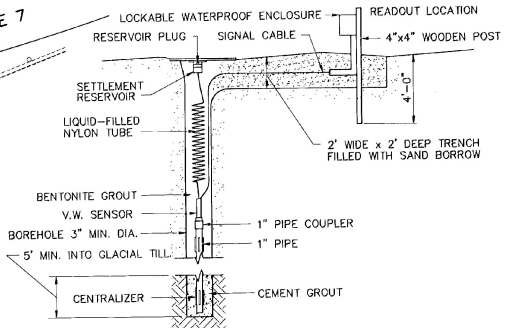
**EARTH PRESSURE CELL DETAIL**  
⊕ BOTTOM OF EMBANKMENT  
NOT TO SCALE



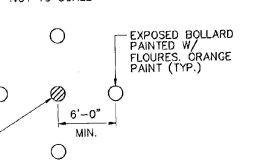
**EARTH PRESSURE CELL DETAIL**  
⊕ REAR FACE REINF. EARTH WALL  
NOT TO SCALE



**INCLINOMETER**  
NOT TO SCALE



**SETTLEMENT PLATFORM VIBRATING WIRE**



**PROTECTIVE BOLLARD DETAIL**  
NOT TO SCALE

**TYPE I SETTLEMENT PLATFORM LOCATIONS**

STATION	OFFSET
23+00	20' LEFT
23+50	55' LEFT
24+00	20' LEFT
24+50	55' LEFT
26+75	25' LEFT
27+75	40' LEFT

**SETTLEMENT PLATFORM VIBRATING WIRE LOCATIONS**

STATION	OFFSET
24+85	8' LEFT
25+20	20' LEFT
25+90	8' LEFT
26+25	20' LEFT

**PRESSURE CELLS AT BOTTOM OF EMBANKMENT LOCATIONS**

STATION	OFFSET
24+50	8' LEFT
24+50	20' LEFT
24+75	8' LEFT
26+75	20' LEFT

ADDITIONAL PRESSURE CELLS ARE LOCATED BEHIND WALL NO. 3 (SEE PLAN)

**GROUNDWATER OBSERVATION WELL**



BARNES AND JARNIS, INC.  
CONSULTING ENGINEERS  
25 STUART STREET, 6TH FL.  
BOSTON, MASSACHUSETTS

**STATE OF VERMONT AGENCY OF TRANSPORTATION**

Town Of	WALLINGFORD	Bridge No.	80
Highway No.	U.S. ROUTE 7	Log Sta.	
U.S. ROUTE 7 OVER RAILROAD			
MONITORING INSTRUMENT LAYOUT			
Designed By	SFS	Drawn By	RLL
Checked By	EMM	Bridge Design Supervisor	EMM
Date	4/95	Date	4/95
PROJECT	WALLINGFORD	PROJECT NO.	BRS 0137 (13)
I.G.C. Info.		Bridge Sheet No.	BR206
		Sheet	66 of 113