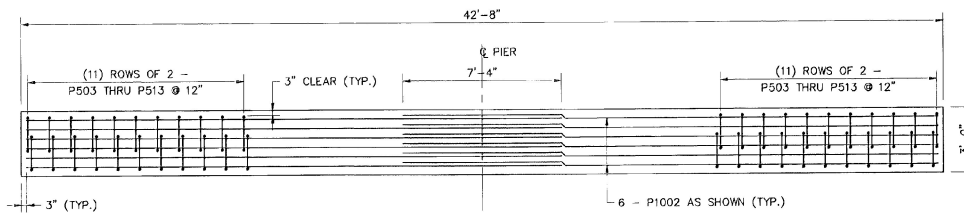
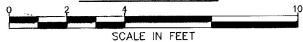
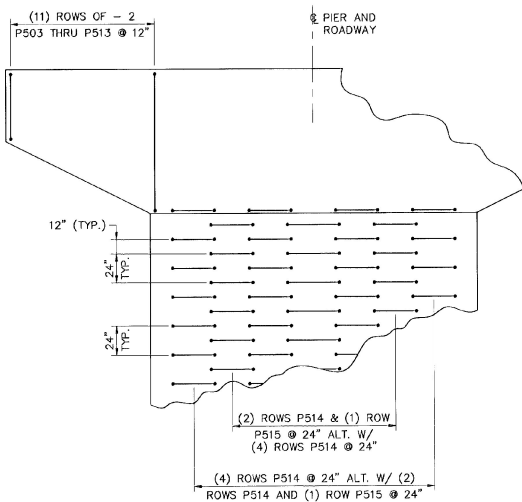
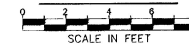


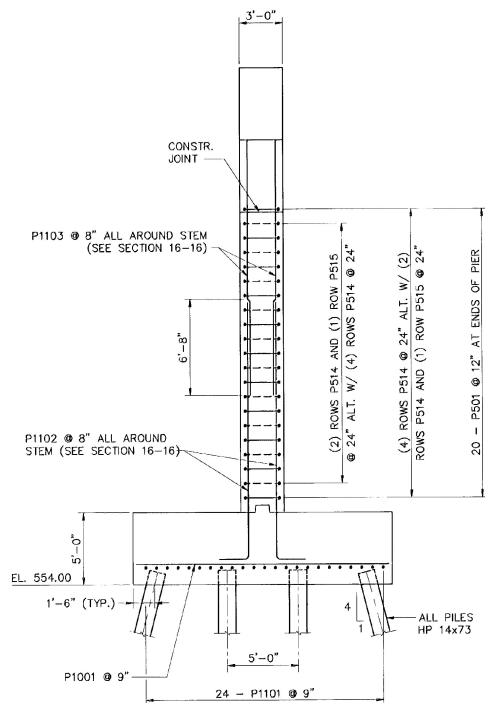
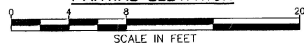
SECTION 16-16



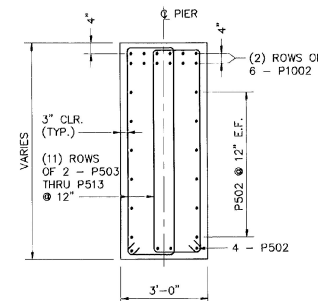
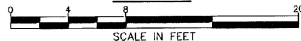
SECTION 17-17



PARTIAL ELEVATION



END VIEW



SECTION 18-18



NOTE :

1. ANCHOR BOLTS SHALL CLEAR 6-P1002 AS SHOWN.
2. FOR LOCATION OF SECTIONS 16-16, 17-17 & 18-18 SEE SHEET BR122.

**STATE OF VERMONT
AGENCY OF TRANSPORTATION**

Town Of	WALLINGFORD	Bridge No.	79
Highway No.	U.S. ROUTE 7	Log Sta.	
		Surv. Sta.	
U.S. ROUTE 7 OVER OTTER CREEK			
PIER DETAILS			
Designed By	TJC	Drawn By	SAM
Checked By	DLJ	Date	4/95
		Bridge Design Supervisor	EMM Date 4/95
PROJECT	WALLINGFORD	PROJECT NO.	BRS 0137 (13)
I.G.C. Info.			
Bridge Sheet No.	BR123	Sheet	49 of 113



BARNES AND JARNIS, INC.
CONSULTING ENGINEERS
25 STUART STREET, 6TH FL.
BOSTON, MASSACHUSETTS