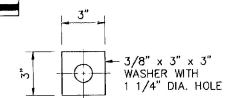


**SECTION 12-12**  
(NORMAL TO & BEARING)  
SCALE IN FEET

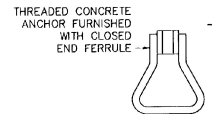
**SECTION 13-13**  
(NORMAL TO & BEARING)  
SCALE IN FEET

**NOTES :**

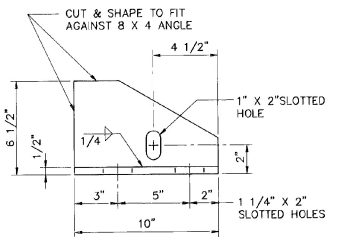
1. DETAILS ON THIS SHEET ARE FOR ITEM 516.10 "BRIDGE EXPANSION JOINT".
2. PREFORMED FABRIC MATERIAL SHALL BE CONTINUOUS AND SHALL CONFORM TO SUBSECTION 707.07.
3. BUTYL RUBBER TAPE SHALL CONFORM TO SUBSECTION 707.12 OF THE GENERAL SPECIAL PROVISIONS.
4. THE FINAL FINISH OF THE EXPANSION DEVICE SHALL BE COVERED DURING THE PLACING OF BRIDGE DECK CONCRETE.
5. ALL STEEL COMPONENTS SHALL BE AASHTO M270 GRADE 36 GALVANIZED OR METALLIZED AS PER SUBSECTION 506.15 (b) OR (c) UNLESS OTHERWISE NOTED.
6. THE ITEM "BRIDGE EXPANSION JOINT" SHALL INCLUDE THE FABRICATION AND ERECTION OF THE COMPLETE JOINT ASSEMBLY INCLUDING ALL STEEL PLATES, ANGLES, WELDED STUDS OR RODS, PREFORMED FABRIC MATERIAL, BUTYL RUBBER TAPE AND OTHER MISCELLANEOUS MATERIAL.
7. CONCRETE CONTACT SURFACES SHALL BE COATED WITH AN EPOXY BONDING COMPOUND CONFORMING TO THE REQUIREMENTS OF SUBSECTION 719.02. PAYMENT SHALL BE INCLUDED IN THE UNIT PRICE BID FOR ITEM 516.10 THE UNIT PRICE BID FOR ITEM 516.10 "BRIDGE EXPANSION JOINTS".
8. A 1" DIAMETER PLASTIC DRAIN TUBE SHALL BE INSTALLED AS SHOWN AT THE FACE OF CURB. THE UPPER END IS TO BE PLUGGED WITH STEEL WOOL AND THE LOWER END IS TO EXTEND BELOW THE BOTTOM OF THE ADJACENT GIRDER. THE DRAIN TUBES SHALL BE FASTENED TO THE GIRDERS USING A METHOD APPROVED BY THE ENGINEER.
9. FOR CLARITY, NOT ALL REINFORCEMENT SHOWN.
10. THE 4" x 8" x 1/2" ANGLE SHALL BE FURNISHED AS ONE CONTINUOUS PIECE. THE 1 1/4" x 5 1/4" BAR SHALL BE FURNISHED IN TWO EQUAL PIECES.



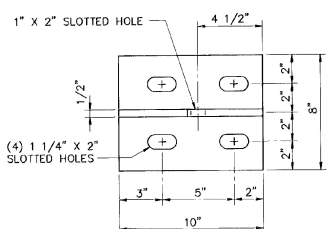
**WASHER FOR BRACKET**  
SCALE IN FEET



**ANCHOR FERRULE DETAIL**  
SCALE IN FEET



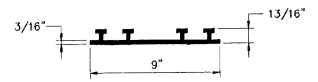
**BRACKET ELEVATION**  
SCALE IN FEET



**BRACKET PLAN**  
SCALE IN FEET

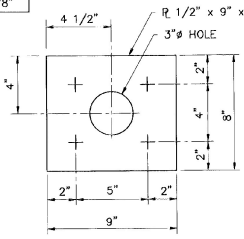
TEMP.	DISTANCE "C" (AT JOINT)	
	ABUT. NO. 1	ABUT. NO. 2
0° F	1 15/16"	2"
15° F	1 13/16"	1 13/16"
30° F	1 5/8"	1 5/8"
45° F	1 1/2"	1 1/2"
60° F	1 3/8"	1 5/16"
75° F	1 1/4"	1 3/16"
90° F	1 1/16"	1"
105° F	15/16"	7/8"

**NOTE :**  
THREADED CONCRETE ANCHORS MAY BE SUBSTITUTED FOR CLOSED THREADED FERRULES



**P.V.C. WATERSTOP FOR CONSTRUCTION JOINTS**

THE COSTS FOR P.V.C. WATERSTOP SHALL BE INCLUDED IN THE UNIT PRICE BID FOR CONCRETE. OTHER CONFIGURATIONS MAY BE USED UPON APPROVAL OF THE STRUCTURES ENGINEER.



**PLATE PLAN VIEW**  
SCALE IN FEET

**BARNES AND JARNIS, INC.**  
CONSULTING ENGINEERS  
25 STUART STREET, 6TH FL.  
BOSTON, MASSACHUSETTS

**STATE OF VERMONT**  
**AGENCY OF TRANSPORTATION**

Town Of	WALLINGFORD	Bridge No.	79
Highway No.	U.S. ROUTE 7	Log Sta.	
		Surv. Sta.	
<b>U.S. ROUTE 7 OVER OTTER CREEK</b>			
<b>EXPANSION JOINT DETAILS</b>			
Designed By	DLJ	Drawn By	R.J.L.
Checked By	TJC	Date	4/95
		Bridge Design Supervisor	EMM
		Date	4/95
PROJECT	WALLINGFORD	PROJECT NO.	BRS 0137 (13)
I.G.C. Info.			
Bridge Sheet No.	BR119	Sheet	45 of 113