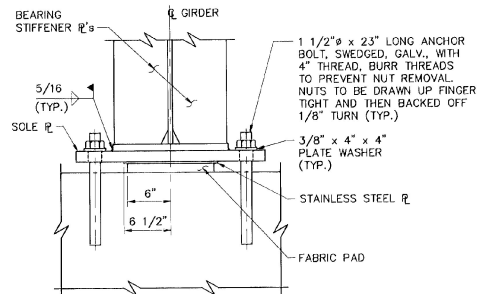
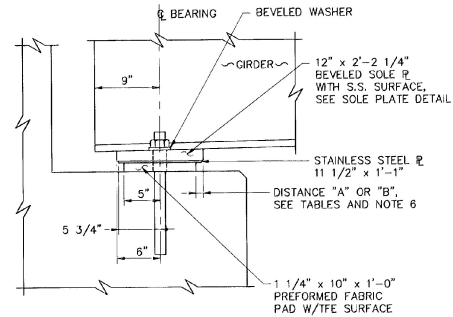


NOTE: STIFFENERS NOT SHOWN

PLAN

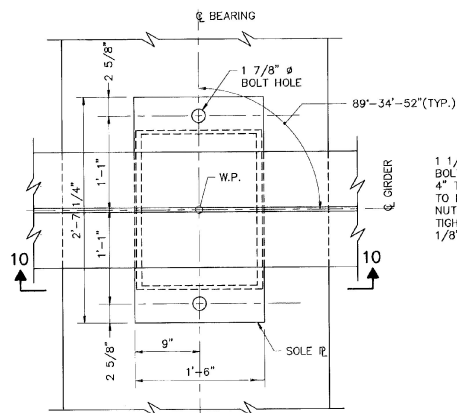


ELEVATION



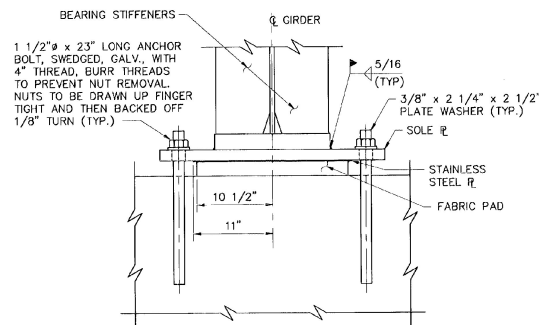
SECTION 9-9

ABUTMENT BEARINGS

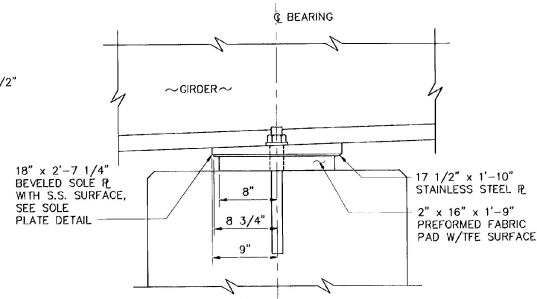


NOTE: STIFFENERS NOT SHOWN

PLAN



ELEVATION



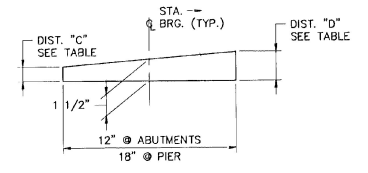
SECTION 10-10

PIER BEARINGS



NOTES:

- BEARINGS SHALL CONFORM TO APPLICABLE SUBSECTIONS OF SECTION 531 & 731.
- BEARINGS SHALL BE PAID FOR UNDER THE ITEM 531.10 "BEARING DEVICE ASSEMBLY".
- SHOP DRAWINGS CONFORMING TO SUBSECTION 531.03 SHALL BE SUBMITTED TO INCLUDE WELDING AND BONDING PROCEDURES.
- FABRICATION DRAWINGS SHALL IDENTIFY THE NUMBER OF LAYERS OF GALVANIZED SHEETS AND CORRESPONDING SHEET THICKNESSES TO BE USED FOR FABRICATING THE BEARING PAD AND SHALL INCLUDE DETAILED PROCEDURES FOR BONDING THESE SHEETS TOGETHER.
- THE CONCRETE SURFACE UNDER THE BEARING DEVICE SHALL BE LEVEL.
- DISTANCE "A" IS THE FINAL SETTING FOR THE BEARING PAD AFTER THE CONCRETE SLAB, CURB, PAVEMENT AND BRIDGE RAIL ARE PLACED. DISTANCE "B" IS LISTED FOR SETTING THE BEARING AFTER THE STRUCTURAL STEEL IS ERRECTED AND BEFORE THE CONCRETE DECK IS POURED. THE DIFFERENCE IS THE THEORETICAL ELONGATION OF THE BOTTOM FLANGE DUE TO DEAD LOAD DEFLECTION. THE FINAL DISTANCE "A", AS SHOWN IN THE TABLE, MUST BE ATTAINED WITHIN 1/8" INCH.
- DESIGN CRITERIA:
  - BASE PLATE TO CONCRETE DESIGN PRESSURE = 1000 P.S.I. MAXIMUM
  - MINIMUM ALLOWABLE DESIGN ROTATION = 0.015 RADIAN
  - DESIGN LOAD PER BEARING = 115 KIPS @ ABUTMENTS. = 330 KIPS @ PIERS.
- ALL STEEL IN BEARING DEVICES (EXCEPT STAINLESS) SHALL BE AASHTO M-270, GRADE 36.
- ANCHOR BOLTS SHALL HAVE A MINIMUM OF 15" EMBEDMENT INTO THE CONCRETE AND SHALL CONFORM TO SUBSECTION 714.08 IN THE "VERMONT SPECIFICATIONS".
- ALL BEARING DEVICES SHALL BE GALVANIZED OR METALIZED AS PER SUBSECTION 531.04(d) & (c). IF THE BEARINGS ARE METALIZED THEY SHALL BE SEALED WITH AN APPROVED PRIMER AS SPECIFIED IN SUBSECTION 506.15(c). AREAS OF GALVANIZING OR METALIZING DAMAGED BY FIELD WELDING OR HANDLING SHALL BE PAINTED WITH AN APPROVED SEALER IN ACCORDANCE WITH SUBSECTION 708.02(d).
- ALL THE ANCHOR BOLTS, NUTS AND WASHERS SHALL BE GALVANIZED. ALL WASHERS SHALL BE 3/8" PLATE (MINIMUM). PAYMENT FOR ANCHOR BOLTS, NUTS AND WASHERS SHALL BE INCLUDED IN THE UNIT BID PRICE FOR "BEARING DEVICE ASSEMBLY".



SOLE PLATE DETAIL

| TEMP.  | ABUTMENT NO. 1 |           |
|--------|----------------|-----------|
|        | DIST. "A"      | DIST. "B" |
| 0° F   | 1 7/16"        | 1 5/8"    |
| 15° F  | 1 1/4"         | 1 7/16"   |
| 30° F  | 1 1/8"         | 1 5/16"   |
| 45° F  | 1"             | 1 3/16"   |
| 60° F  | 7/8"           | 1 1/16"   |
| 75° F  | 3/4"           | 15/16"    |
| 90° F  | 9/16"          | 3/4"      |
| 105° F | 7/16"          | 5/8"      |

| TEMP.  | ABUTMENT NO. 2 |           |
|--------|----------------|-----------|
|        | DIST. "A"      | DIST. "B" |
| 0° F   | 1 1/2"         | 1 15/16"  |
| 15° F  | 1 5/16"        | 1 3/4"    |
| 30° F  | 1 3/16"        | 1 5/8"    |
| 45° F  | 1"             | 1 7/16"   |
| 60° F  | 13/16"         | 1 1/4"    |
| 75° F  | 11/16"         | 1 1/8"    |
| 90° F  | 1/2"           | 15/16"    |
| 105° F | 3/8"           | 13/16"    |

| SOLE PLATE BEVEL DISTANCES |           |           |
|----------------------------|-----------|-----------|
| LOCATION                   | DIST. "C" | DIST. "D" |
| ABUTMENT NO. 1             | 1 15/16"  | 1 11/16"  |
| PIER                       | 1 1/4"    | 1 3/4"    |
| ABUTMENT NO. 2             | 1 5/16"   | 1 11/16"  |



BARNES AND JARNIS, INC.  
CONSULTING ENGINEERS  
25 STUART STREET, 8TH FL.  
BOSTON, MASSACHUSETTS

STATE OF VERMONT  
AGENCY OF TRANSPORTATION

|                               |              |                          |               |
|-------------------------------|--------------|--------------------------|---------------|
| Town Of                       | WALLINGFORD  | Bridge No.               | 79            |
| Highway No.                   | U.S. ROUTE 7 | Log. Sta.                |               |
|                               |              | Surv. Sta.               |               |
| U.S. ROUTE 7 OVER OTTER CREEK |              |                          |               |
| BEARING DETAILS               |              |                          |               |
| Designed By                   | TJC          | Drawn By                 | JNC           |
| Checked By                    | DLJ          | Date                     | 4/95          |
|                               |              | Bridge Design Supervisor | EMM           |
|                               |              | Date                     | 4/95          |
| PROJECT                       | WALLINGFORD  | PROJECT NO.              | BR5 0137 (13) |
| I.G.C. Info.                  |              |                          |               |
| Bridge Sheet No.              | BR116        | Sheet                    | 42 of 113     |