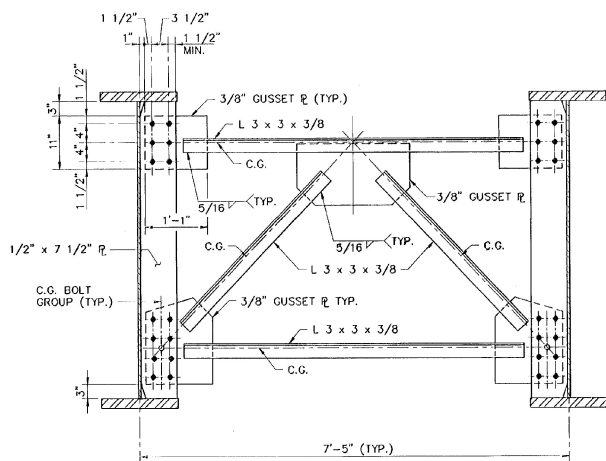
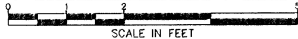
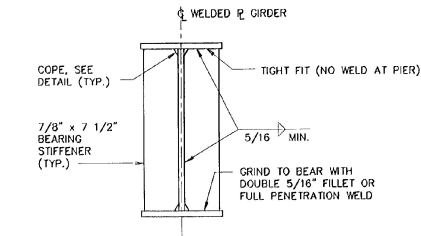
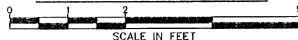


ABUTMENT & PIER CROSSFRAME

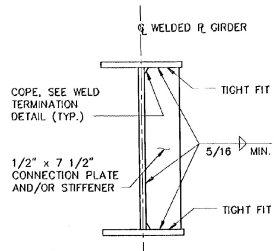


INTERMEDIATE CROSSFRAME



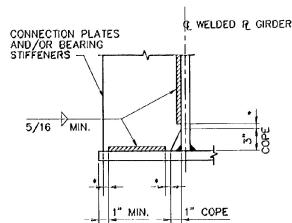
ABUTMENT & PIER BEARING STIFFENERS FOR WELDED PLATE GIRDERS

NOT TO SCALE

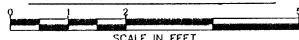


INTERMEDIATE CONNECTION PLATES FOR WELDED PLATE GIRDERS

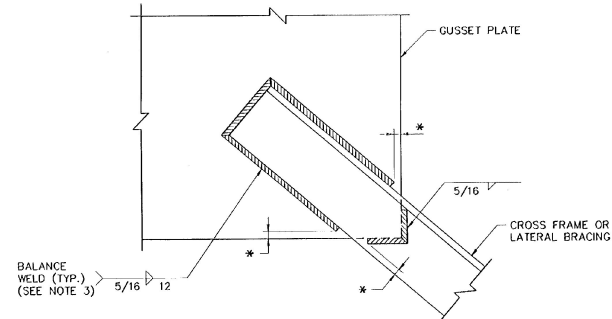
NOT TO SCALE



WELD TERMINATION AND COPING DETAILS FOR WELDED PLATE GIRDERS



\* NO WELD FOR 1/4" MIN., 1/2" MAX. EXCEPT MUST MAINTAIN 1" MINIMUM FROM EDGE OF FLANGE



\* NO WELD FOR 1/4" MIN., 1/2" MAX.  
WELD LOCATION DETAIL AT CROSS FRAMES & LATERAL BRACING

NOT TO SCALE

NOTES :

1. ALL CONNECTIONS SHALL BE MADE USING 7/8" DIAMETER AASHTO M164 BOLTS. ALL HOLES IN THE CONNECTOR PLATES SHALL BE 1" DIAMETER.
2. INTERMEDIATE CROSSFRAME BOLTS SHALL ONLY BE SNUG TIGHT UNTIL AFTER THE ENTIRE DECK HAS BEEN PLACED.
3. THE LENGTH OF WELDS ON EACH SIDE OF THE ANGLE SHALL BE PROPORTIONED TO MINIMIZE ECCENTRICITIES IN THE CONNECTION.

REV. NO.	DATE	DESCRIPTION
1	11/21/95	REVISED CROSSFRAMES
<b>STATE OF VERMONT</b>		
<b>AGENCY OF TRANSPORTATION</b>		
Town Of	WALLINGFORD	Bridge No. 79
Highway No.	U.S. ROUTE 7	Log Sta.
		Surv. Sta.
U.S. ROUTE 7 OVER OTTER CREEK		
CROSSFRAME DETAILS		
Designed By	TJC	Drawn By SAM
Checked By	DLJ	Bridge Design Supervisor EMM
Date	4/95	Date 4/95
PROJECT	WALLINGFORD	PROJECT NO. BRS 0137 (13)
I.G.C. Info.		
Bridge Sheet No.	BR115R	Sheet 41R of 113



BARNES AND JARNIS, INC.  
CONSULTING ENGINEERS  
25 STUART STREET, 6TH FL.  
BOSTON, MASSACHUSETTS