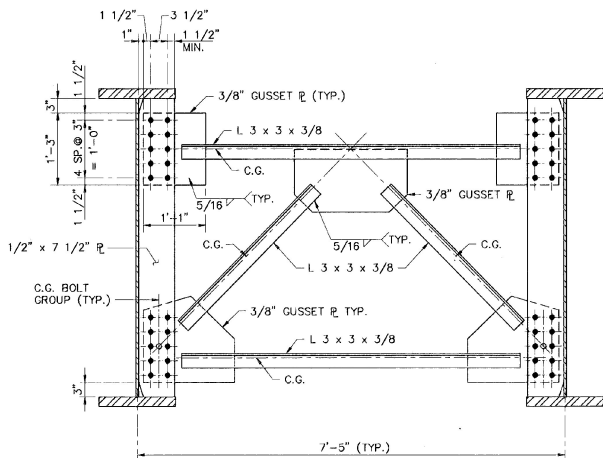
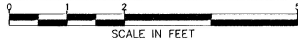
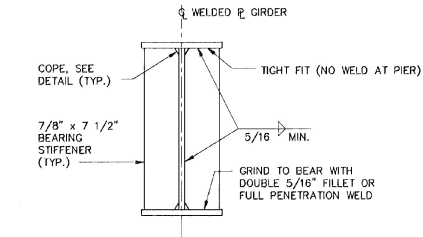
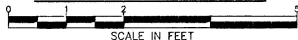


**ABUTMENT & PIER CROSSFRAME**

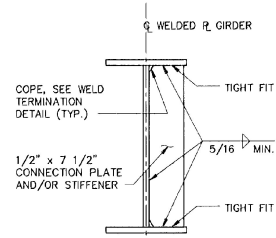


**INTERMEDIATE CROSSFRAME**



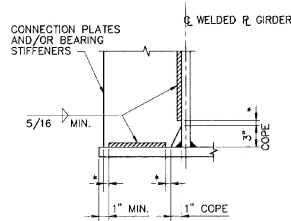
**ABUTMENT & PIER BEARING STIFFENERS FOR WELDED PLATE GIRDERS**

NOT TO SCALE

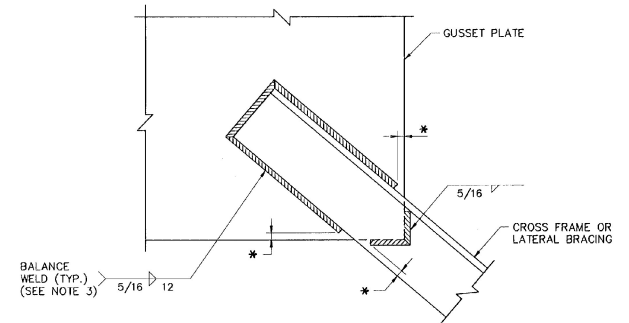
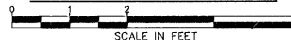


**INTERMEDIATE CONNECTION PLATES FOR WELDED PLATE GIRDERS**

NOT TO SCALE



**WELD TERMINATION AND COPING DETAILS FOR WELDED PLATE GIRDERS**



**WELD LOCATION DETAIL AT CROSS FRAMES & LATERAL BRACING**

NOT TO SCALE

\* NO WELD FOR 1/4" MIN., 1/2" MAX.

**NOTES :**

1. ALL CONNECTIONS SHALL BE MADE USING 7/8" DIAMETER AASHTO M164 BOLTS. ALL HOLES IN THE CONNECTOR PLATES SHALL BE 1" DIAMETER.
2. INTERMEDIATE CROSSFRAME BOLTS SHALL ONLY BE SNUG TIGHT UNTIL AFTER THE ENTIRE DECK HAS BEEN PLACED.
3. THE LENGTH OF WELDS ON EACH SIDE OF THE ANGLE SHALL BE PROPORTIONED TO MINIMIZE ECCENTRICITIES IN THE CONNECTION.

**STATE OF VERMONT AGENCY OF TRANSPORTATION**

Town Of	WALLINGFORD	Bridge No.	79
Highway No.	U.S. ROUTE 7	Log Sta.	
		Surv. Sta.	
<b>U.S. ROUTE 7 OVER OTTER CREEK</b>			
<b>CROSSFRAME DETAILS</b>			
Designed By	TJC	Drawn By	SAM
Checked By	DLJ	Bridge Design Supervisor	EMM
Date	4/95	Date	4/95
PROJECT	WALLINGFORD	PROJECT NO.	BR5 0137 (13)
I.G.C. Info.			
Bridge Sheet No.	BR115	Sheet	41 of 113



**BARNES AND JARNIS, INC.**  
CONSULTING ENGINEERS  
25 STUART STREET, 6TH FL.  
BOSTON, MASSACHUSETTS