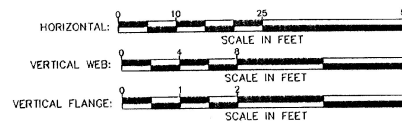


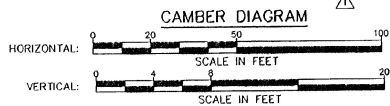
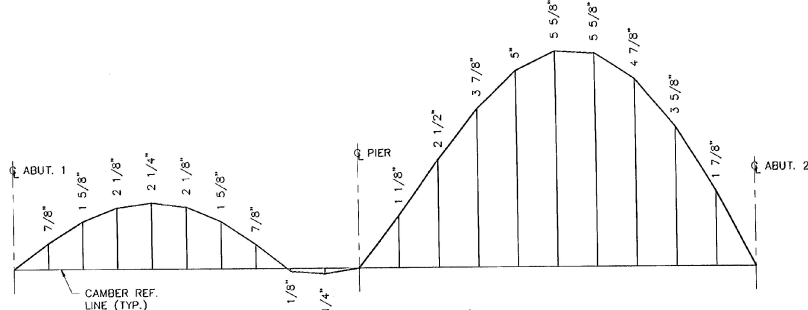
GIRDER ELEVATION



••CVN = CHARPY V-NOTCH TEST

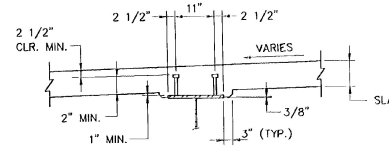
NOTES:

1. ALL STRUCTURAL STEEL SHALL BE AASHTO M270 OR 50W UNLESS OTHERWISE NOTED. THE STEEL IN THE WEBS AND FLANGES SHALL MEET THE CHARPY V-NOTCH TEST AS SPECIFIED IN THE STANDARD SPECIFICATIONS SECTION 714.03.
2. ALL BEARING STIFFENERS PLATES SHALL BE VERTICAL IN THEIR FINAL ERECTED POSITIONS.
3. ENDS OF GIRDERS FABRICATED SO THAT THE ENDS WILL BE VERTICAL UNDER FULL DEAD LOAD.
4. CONTACT SURFACES OF BOLTED CONNECTIONS SHALL BE BLAST CLEANED IF RUSTED BEFORE CONNECTION IS MADE.
5. TOP OF STUDS SHALL EXTEND ABOVE BOTTOM LAYER OF DECK REINFORCEMENT.
6. FOR SCUPPER LOCATION AND DETAILS, SEE SHEET BR109.
7. FOR CROSSFRAME DETAILS, SEE SHEET BR113 AND BR115.
8. BUTT WELDED FLANGE PLATES SHALL BE OFFSET 5'-0" FROM BUTT WELDED WEB PLATES.



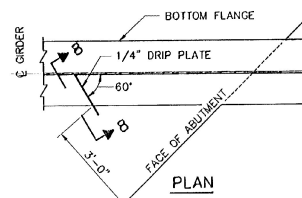
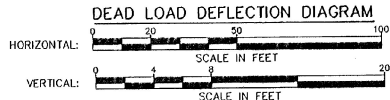
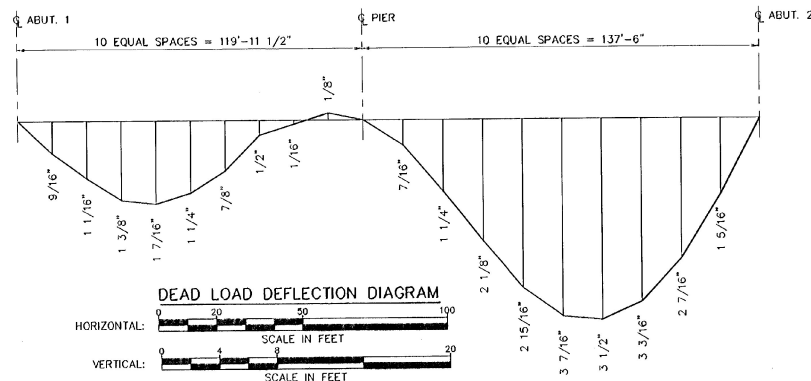
CAMBER NOTES:

1. CAMBER REF. LINE FOR EACH GIRDER IS A STRAIGHT LINE FROM ABUT. #1 C.BRG. TO C.BRG. FOR SPAN NO. 1 AND A STRAIGHT LINE FROM C.BRG. TO ABUT. #2 C.BRG. FOR SPAN NO. 2.
2. EFFECTS OF VERTICAL CURVE ARE INCLUDED IN SPAN NO. 2 CAMBER. FOR VERTICAL CURVE DATA, SEE SHEETS 15 AND 16 OF 113.

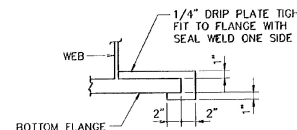


TYPICAL GIRDER HAUNCH AND SHEAR CONNECTOR DETAIL UNLESS NOTED OTHERWISE

NOT TO SCALE



PLAN



SECTION 8-8

NOTE: DRIP PLATES SHALL BE PLACED ON OUTSIDE EDGE OF FASCIA GIRDERS AS INDICATED ON PLANS.

DRIP PLATE DETAIL NOT TO SCALE



BARNES AND JARNIS, INC.
CONSULTING ENGINEERS
25 STUART STREET, 6TH FL.
BOSTON, MASSACHUSETTS

REV. NO.	DATE	DESCRIPTION
1	12/6/95	REVISED CAMBER DIAGRAM

STATE OF VERMONT
AGENCY OF TRANSPORTATION

Town Of	WALLINGFORD	Bridge No.	79
Highway No.	U.S. ROUTE 7	Log Sta.	
U.S. ROUTE 7 OVER OTTER CREEK			
GIRDER ELEVATION			
Designed By	DLJ	Drawn By	SAM
Checked By	Date	Bridge Design Supervisor	EMM
	TJC	4/95	Date 4/95
PROJECT	WALLINGFORD	PROJECT NO.	BRS 0137 (13)
I.G.C. Info.			
Bridge Sheet No.	BR114R	Sheet	40R of 116