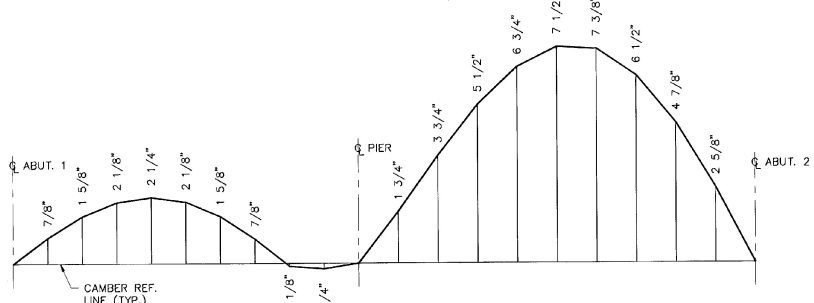
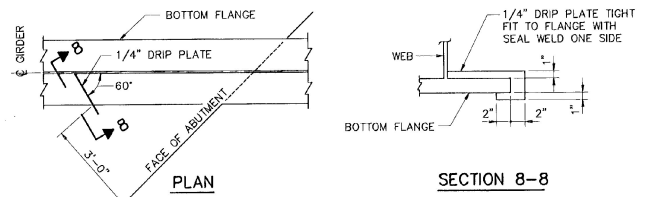
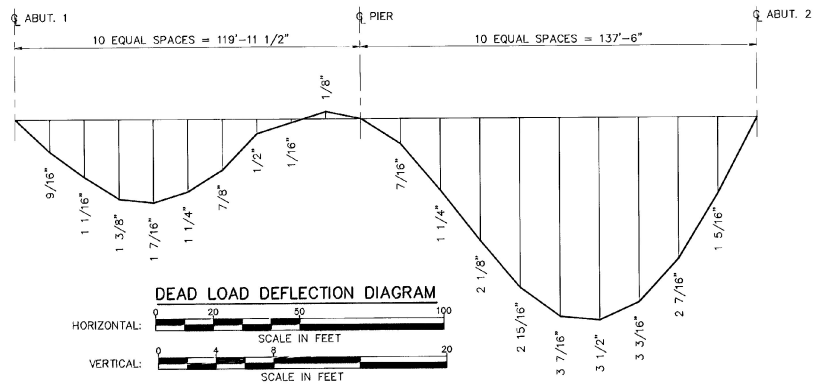
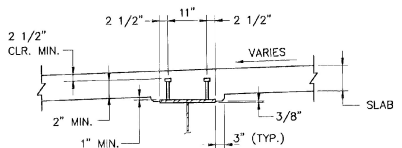


\*\*CVN = CHARPY V-NOTCH TEST



- CAMBER NOTES:**
- CAMBER REF. LINE FOR EACH GIRDER IS A STRAIGHT LINE FROM ABUT. #1 @ BRG. TO @ PIER FOR SPAN NO. 1 AND A STRAIGHT LINE FROM @ PIER TO ABUT. #2 @ BRG. FOR SPAN NO. 2.
  - EFFECTS OF VERTICAL CURVE ARE INCLUDED IN SPAN NO. 2 CAMBER. FOR VERTICAL CURVE DATA, SEE SHEETS 15 AND 16 OF 113.



NOTE: DRIP PLATES SHALL BE PLACED ON OUTSIDE EDGE OF FASCIA GIRDERS AS INDICATED ON PLANS.

**DRIP PLATE DETAIL**  
NOT TO SCALE

- NOTES:**
- ALL STRUCTURAL STEEL SHALL BE AASHTO M270 GR 50W UNLESS OTHERWISE NOTED. THE STEEL IN THE WEBS AND FLANGES SHALL MEET THE CHARPY V-NOTCH TEST AS SPECIFIED IN THE STANDARD SPECIFICATIONS SECTION 714.03.
  - ALL BEARING STIFFENERS PLATES SHALL BE VERTICAL IN THEIR FINAL ERECTED POSITIONS.
  - ENDS OF GIRDERS FABRICATED SO THAT THE ENDS WILL BE VERTICAL UNDER FULL DEAD LOAD.
  - CONTACT SURFACES OF BOLTED CONNECTIONS SHALL BE BLAST CLEANED IF RUSTED BEFORE CONNECTION IS MADE.
  - TOP OF STUDS SHALL EXTEND ABOVE BOTTOM LAYER OF DECK REINFORCEMENT.
  - FOR SCUPPER LOCATION AND DETAILS, SEE SHEET BR109.
  - FOR CROSSFRAME DETAILS, SEE SHEET BR113 AND BR115.
  - BUTT WELDED FLANGE PLATES SHALL BE OFFSET 5'-0" FROM BUTT WELDED WEB PLATES.

|  |              |                          |               |
|--|--------------|--------------------------|---------------|
| <b>STATE OF VERMONT<br/>AGENCY OF TRANSPORTATION</b> |              |                          |               |
| Town Of  | WALLINGFORD  | Bridge No.               | 79            |
| Highway No.  | U.S. ROUTE 7 | Log Sta.                 |               |
|  |              | Surv. Sta.               |               |
| <b>U.S. ROUTE 7 OVER OTTER CREEK</b>                 |              |                          |               |
| <b>GIRDER ELEVATION</b>                              |              |                          |               |
| Designed By  | DLJ          | Drawn By                 | SAM           |
| Checked By   | Date         | Bridge Design Supervisor | Date          |
|  | TJC          | 4/95                     | EMM 4/95      |
| PROJECT  | WALLINGFORD  | PROJECT NO.              | BR5 0137 (13) |
| I.G.C. Info.   |              |                          |               |
| Bridge Sheet No.                                     | BR114        | Sheet                    | 40 of 118     |

**B-J** BARNES AND JARNIS, INC.  
CONSULTING ENGINEERS  
25 STUART STREET, 8TH FL.  
BOSTON, MASSACHUSETTS