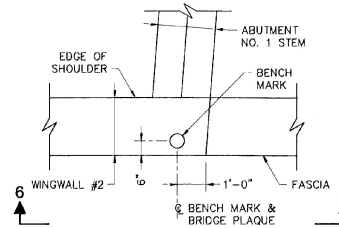
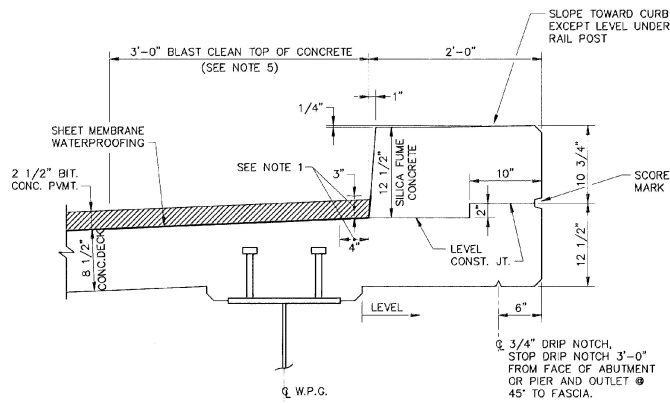


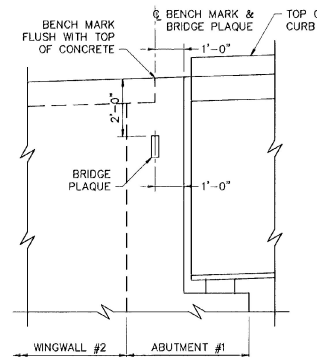
FLARED END DETAIL FOR 2'-0" CURB
NOT TO SCALE



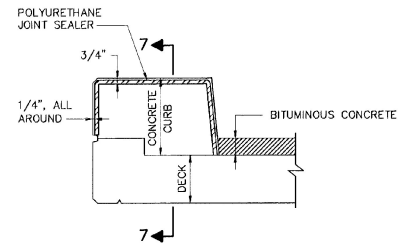
PLAN
NOT TO SCALE



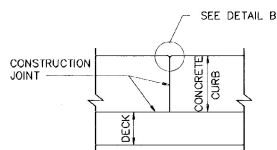
TYPICAL 2'-0" CURB SECTION
SCALE IN FEET



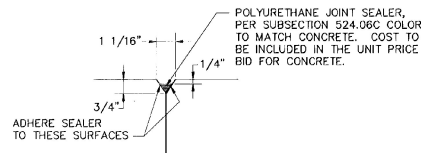
VIEW 6-6
LOCATE BENCH MARK
AND BRIDGE PLAQUE
NOT TO SCALE



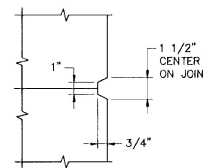
TYPICAL SECTION THROUGH
CONCRETE CURB CONSTRUCTION JOINT
NOT TO SCALE



SECTION 7-7
NOT TO SCALE



DETAIL B
NOT TO SCALE



SCORE MARK DETAIL
NOT TO SCALE

NOTES:

- TWO COATS OF POLYURETHANE MATERIAL SHALL BE PLACED 4" WIDE ALONG DECK, 3" UP FACE OF CURB AND ALONG CONCRETE SHOULDER AT EXPANSION JOINT. SEE SPEC. 519.05 (B). POLYURETHANE MATERIAL AND BLAST CLEANING SHALL BE INCLUDED IN THE UNIT BID FOR SHEET MEMBRANE WATERPROOFING.
- BLAST CLEAN 3'-0" FROM FACE OF CURB AND 3" UP CURB FACE PRIOR TO PLACING MEMBRANE.
- SHEET MEMBRANE WATERPROOFING SHALL EXTEND TO FACE OF CURB AS SHOWN.
- CONSTRUCTION JOINTS THROUGH CONCRETE CURBS SHALL BE SPACED MAXIMUM 20'-0" CENTER TO CENTER AND SHALL BE 1'-6" MINIMUM FROM THE CENTER OF THE NEAREST BRIDGE RAIL POST. CONCRETE SHALL BE PLACED IN ALTERNATING SECTIONS WITH A MINIMUM OF 48 HOURS DELAY BETWEEN ADJACENT POURS.
- LONGITUDINAL REINFORCING SHALL PASS THROUGH CONCRETE CURB CONSTRUCTION JOINTS.
- CURB REINFORCING STIRRUP BARS SHALL BE TURNED AS REQUIRED TO FIT TAPERED ENDS.
- SEE SHEET BR114 FOR GIRDER HAUNCH AND SHEAR CONNECTOR DETAIL.
- THE BENCH MARK AND BRIDGE PLAQUE WILL BE SUPPLIED BY THE AGENCY OF TRANSPORTATION AND SHALL BE INSTALLED BY THE CONTRACTOR AT ABUTMENT #1 ON THE RIGHT SIDE AS SHOWN OR AS DIRECTED BY THE ENGINEER.

STATE OF VERMONT
AGENCY OF TRANSPORTATION

Town Of	WALLINGFORD	Bridge No.	79
Highway No.	U.S. ROUTE 7	Log Sta.	
		Surv. Sta.	
U.S. ROUTE 7 OVER OTTER CREEK			
CURB DETAILS			
Designed By	TJC	Drawn By	SAM
Checked By	DLJ	Bridge Design Supervisor	EMM
	Date	4/95	Date
			4/95
PROJECT	WALLINGFORD	PROJECT NO.	BRS 0137 (13)
I.C.C. Info.		Bridge Sheet No.	BR112
		Sheet	38 of 113



BARNES AND JARNIS, INC.
CONSULTING ENGINEERS
25 STUART STREET, 6TH FL.
BOSTON, MASSACHUSETTS