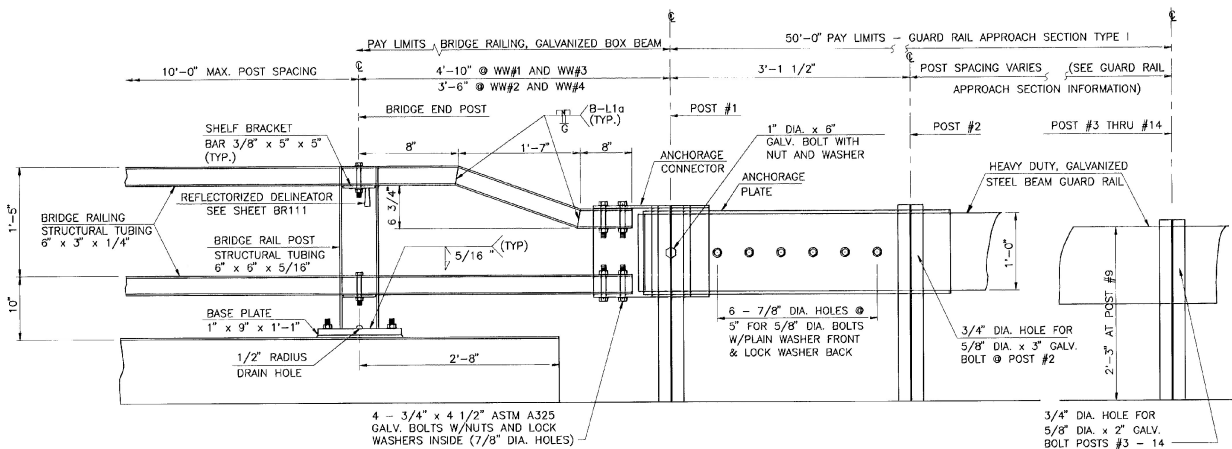


PLAN
N.T.S.

**GUARD RAIL
APPROACH SECTION
TYPE I**

POST NO.	SPACING
1	3'-1 1/2"
2	3'-1 1/2"
3	3'-1 1/2"
4	3'-1 1/2"
5	3'-1 1/2"
6	3'-1 1/2"
7	3'-1 1/2"
8	3'-1 1/2"
9	4'-2"
10	4'-2"
11	4'-2"
12	6'-3"
13	6'-3"
14	6'-3"

FOR ADDITIONAL DETAILS OF BRIDGE RAILING,
GALVANIZED BOX BEAM, SEE STD. DWGS.
SB-R4A-82 AND SB-R4B-82.



ELEVATION
N.T.S.

FOR ADDITIONAL INFORMATION ON THE
CONNECTION/TRANSITION DETAILS AT POST
NO. 1, SEE SHEET BR111.

**STATE OF VERMONT
AGENCY OF TRANSPORTATION**

Town Of	WALLINGFORD	Bridge No.	79
Highway No.	U.S. ROUTE 7	Log Sta.	
		Surv. Sta.	
U.S. ROUTE 7 OVER OTTER CREEK			
BRIDGE RAILING TRANSITION DETAILS @ ABUTMENTS			
Designed By	VAOT	Drawn By	VAOT
Checked By	TJC	Date	4/95
		Bridge Design Supervisor	EMM
		Date	4/95
PROJECT	WALLINGFORD	PROJECT NO.	BRS 0137 (13)
I.G.C. Info.			
Bridge Sheet No.	BR110	Sheet	36 of 113



BARNES AND JARNIS, INC.
CONSULTING ENGINEERS
25 STUART STREET, 6TH FL.
BOSTON, MASSACHUSETTS