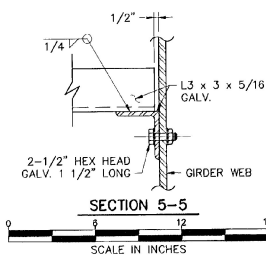
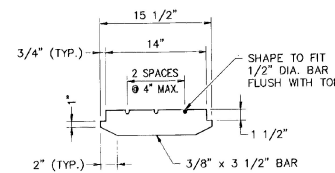
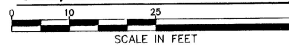


CURB & RAILING NOTES:

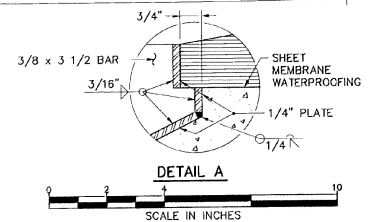
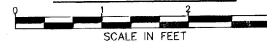
1. THE 2'-0" CURB SHALL BE PLACED IN 20'-0" SECTIONS AS PER DWG. BR112. CURB JOINT DETAILS. PLACEMENT DETAILS FOR THE CURB SHALL BE SUBMITTED TO THE BRIDGE RAILING FABRICATOR BY THE CONTRACTOR.
2. BRIDGE RAIL POST SHALL BE 1'-6" MINIMUM FROM CURB CONSTRUCTION JOINTS (UNLESS OTHERWISE NOTED).
3. FOR CURB JOINT DETAILS AND CURB DETAILS SEE BR112.
4. FOR BRIDGE RAILING DETAILS SEE BR110 AND STANDARD SHEET SB-R4A-82.
5. FOR APPROACH RAIL DETAILS SEE STANDARD SHEET SB-R4B-82.



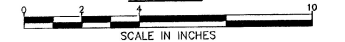
CURB, RAILING AND SCUPPER PLAN



BAR DETAIL FOR GRATE

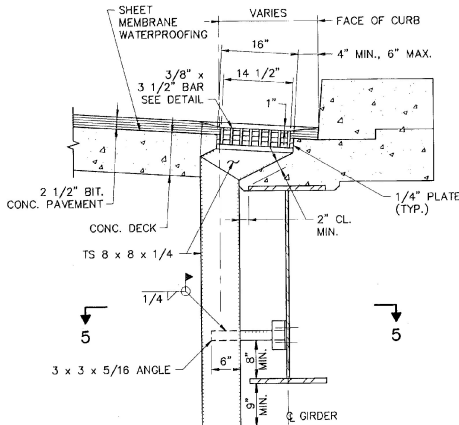


DETAIL A

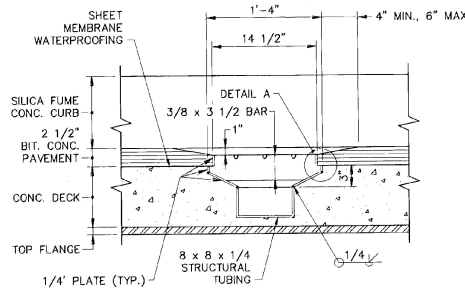
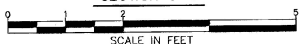


SCUPPER NOTES:

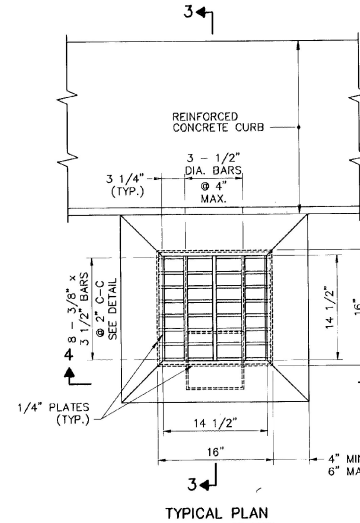
1. STRUCTURAL RUBING SHALL CONFORM TO ASTM A500 OR A501. ALL OTHER STL. SHALL CONF. TO M270 GRADE 36. THE WHOLE SCUPPER ASSEMBLY SHALL BE GALVANIZED AFTER FABRICATION IN ACCORDANCE WITH ASTM A123.
2. ALL SURFACES OF SCUPPER WHICH WILL CONTACT CONCRETE SHALL BE COATED WITH EPOXY BONDING COMPOUND IN ACCORDANCE WITH SECTION 719. THE COST OF THIS WORK SHALL BE INCLUDED WITH THE UNIT PRICE BID FOR CONCRETE, CLASS A.
3. SCUPPERS SHALL BE PAID FOR AS STRUCTURAL STEEL (PLATE GIRDER).
4. SPECIAL CARE SHALL BE TAKEN TO SEAL WATERPROOFING MEMBRANE AROUND SCUPPERS SIMILAR TO METHOD USED AT CURB.
5. THE TOP SURFACE OF SCUPPER SHALL BE SLOPED TO MATCH ROADWAY SLOPE AND GRADE.
6. ANY GALVANIZED AREAS THAT ARE WELDED IN THE FIELD MUST BE COATED WITH AN APPROVED SEALER, AFTERWARDS, ACCORDING TO VERMONT SPECIFICATION 708.02(d).



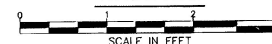
SECTION 3-3



SECTION 4-4



TYPICAL PLAN



BARNES AND JARNIS, INC.
CONSULTING ENGINEERS
25 STUART STREET, 6TH FL.
BOSTON, MASSACHUSETTS

**STATE OF VERMONT
AGENCY OF TRANSPORTATION**

Town Of	WALLINGFORD	Bridge No.	79
Highway No.	U.S. ROUTE 7	Log Sta.	
U.S. ROUTE 7 OVER OTTER CREEK		Surv. Sta.	
SCUPPER DETAILS			
Designed By	TJC	Drawn By	JNC
Checked By	DLJ	Date	4/95
		Bridge Design Supervisor	EMM
		Date	4/95
PROJECT	WALLINGFORD	PROJECT NO.	BRS 0137 (13)
I.G.C. Info.			
Bridge Sheet No.	BR109	Sheet	35 of 113