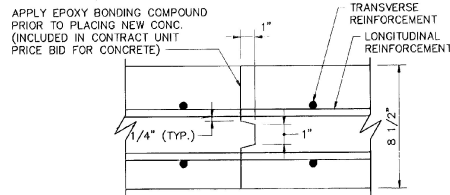
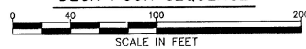
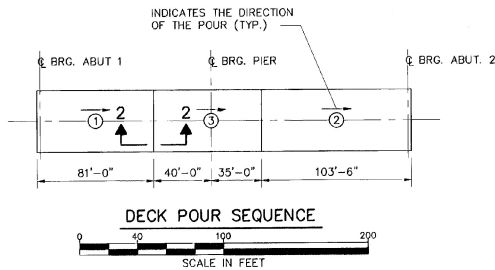
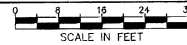
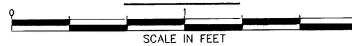


BRIDGE DECK REINFORCING PLAN



SECTION 2-2



NOTES :

1. EACH DECK POUR SHALL BE ACCOMPLISHED IN A MAXIMUM OF 8 HOURS. RETARDER SHALL BE USED AS DIRECTED BY THE ENGINEER.
2. POURS #'s 1 & 2 SHALL BE Poured BEFORE #3.
3. A MINIMUM DELAY OF 96 HOURS BETWEEN POURS SHALL BE OBSERVED WHEN 2 ABUTING DECK SECTIONS ARE NOT Poured IN THE SAME 8 HOUR PERIOD.
4. THE CONTRACTOR SHALL SUBMIT THE PROPOSED DECK POUR DATES AND THE PROPOSED SEQUENCE IF IT DIFFERS FROM THAT INDICATED HERE TO THE ENGINEER FOR REVIEW AND APPROVAL PRIOR TO BEGINNING THE POURS.
5. ALL DECK REINFORCING BARS SHALL BE EPOXY COATED.

STATE OF VERMONT  
AGENCY OF TRANSPORTATION

Town Of	WALLINGFORD	Bridge No.	79
Highway No.	U.S. ROUTE 7	Log. Sta.	
		Surv. Sta.	
U.S. ROUTE 7 OVER OTTER CREEK DECK REINFORCEMENT			
Designed By	DLJ	Drawn By	JNC
Checked By	TJC	Bridge Design Supervisor	EMM
Date	4/95	Date	4/95
PROJECT	WALLINGFORD	PROJECT NO.	BR5 0137 (13)
I.G.C. Info.			
Bridge Sheet No.	BR108	Sheet	34 of 113



BARNES AND JARNIS, INC.  
CONSULTING ENGINEERS  
25 STUART STREET, 6TH FL.  
BOSTON, MASSACHUSETTS