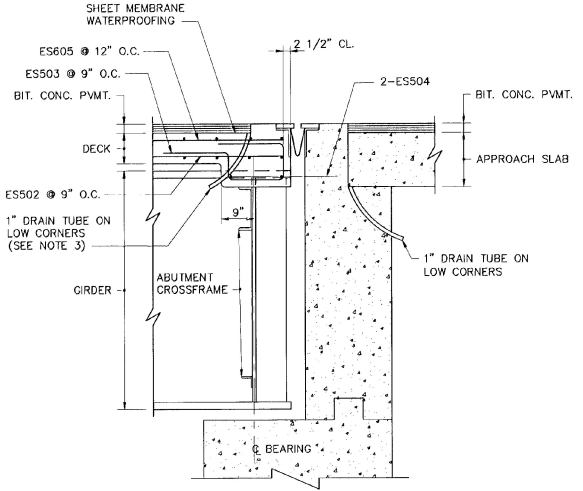
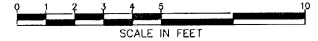
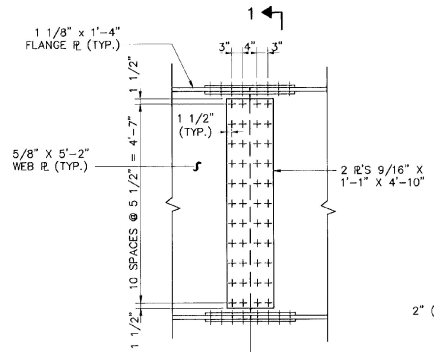
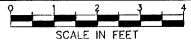


TYPICAL BRIDGE SECTION

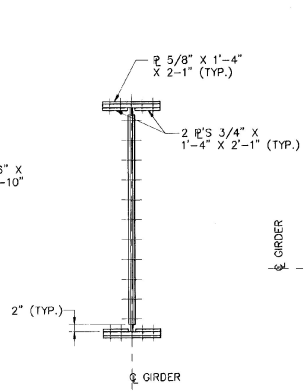
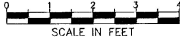


EXPANSION END - ABUTMENT NO. 2
(ABUTMENT NO. 1 OPP. HAND)

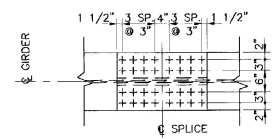
TYPICAL SECTION NORMAL TO ABUTMENT



SPlice DETAIL



SECTION 1-1



PLAN

NOTES:

1. THE BRIDGE RAILING SHALL BE GALVANIZED BOX BEAM BRIDGE RAIL. SEE VAOT STANDARD SB-R4A-82.
2. ALL SUPERSTRUCTURE REINFORCING STEEL SHALL BE EPOXY COATED.
3. 1" PLASTIC TUBE, THE COST OF WHICH IS SUBSIDIARY TO ITEM "CONCRETE, CLASS A". CARE SHALL BE TAKEN TO KEEP TUBE CLEAR DURING CONSTRUCTION. THE TOP OF THE TUBE SHALL BE RECESSED 1/4" BELOW THE TOP OF THE CONC. DECK, AND THE BOTTOM LOCATED 6" BELOW THE BOTTOM FLANGE OF THE NEAREST GIRDER (LOW SIDE OF BRIDGE).
4. FOR BANKING DIAGRAM SEE SHEET NO. 101 OF 113.

STATE OF VERMONT
AGENCY OF TRANSPORTATION

Town Of	WALLINGFORD	Bridge No.	79
Highway No.	U.S. ROUTE 7	Log Sta.	
		Surv. Sta.	
U.S. ROUTE 7 OVER OTTER CREEK SUPERSTRUCTURE DETAILS			
Designed By	DLJ	Drawn By	SAM
Checked By	EMM	Bridge Design Supervisor	EMM
Date	4/95	Date	4/95
PROJECT	WALLINGFORD	PROJECT NO.	BRS 0137 (13)
I.G.C. Info.			
Bridge Sheet No.	BR107	Sheet	33 of 113



BARNES AND JARNIS, INC.
CONSULTING ENGINEERS
25 STUART STREET, 6TH FL.
BOSTON, MASSACHUSETTS