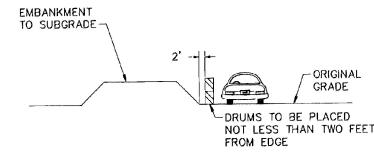
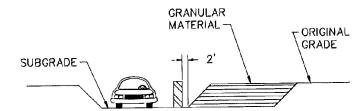


**SUGGESTED TRAFFIC MANAGEMENT SEQUENCE**

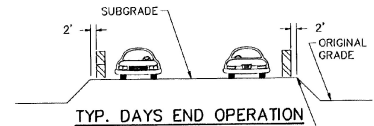
1. ALL TRAFFIC WILL UTILIZE THE EXISTING U.S. ROUTE 7 ROADWAY AND EXISTING BRIDGES #79 AND #80.
2. THE PROPOSED NEW BRIDGES #79 AND #80 WILL BE CONSTRUCTED ON A NEW ALIGNMENT AND THERE APPROACHES MAY BE CONSTRUCTED SO AS TO PROVIDE ACCESS TO THE CONTRACTOR WHILE CONSTRUCTING THE BRIDGES.
3. UPON COMPLETION OF THE BRIDGE CONSTRUCTION FOR BRIDGES #79 AND #80, THE FINAL APPROACH WORK CAN COMMENCE. THE EMBANKMENTS CAN BE CONSTRUCTED IN ACCORDANCE WITH THE GRAPHIC SHOWN FOR EMBANKMENT NAMELY FROM STA. 15+00 TO ABOUT STA. 18+00 AND THE SAME TREATMENT WILL BE AVAILABLE FROM STA. 27+00 TO STA. 31+00. THE EXCAVATION TO SUBGRADE AND SUBSEQUENT GRANULAR BORROW REPLACEMENT OF EXISTING SOILS WILL BE ACCOMPLISHED BY USE OF THE TYPICAL EXCAVATION DETAIL. THIS EXCAVATION WILL BE FROM ABOUT STA. 13+00 TO STA. 15+00 AND ALSO FROM STA. 31+00 TO ABOUT STA. 35+00. WALDO LANE WILL BE PLACED BY THIS EXCAVATION METHOD.
4. UPON COMPLETION OF THE EMBANKMENTS AND BRIDGES #79 AND #80 WILL BE REMOVED AND THE EXISTING EMBANKMENT WILL BE REMOVED AND GRADED AS SHOWN ON THE PLANS AND CROSS SECTIONS.



**TYP. EMBANKMENT DURING WORKING HOURS**



**TYP. EXCAVATION DURING WORKING HOURS**



**TYP. DAYS END OPERATION**

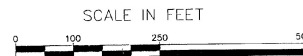
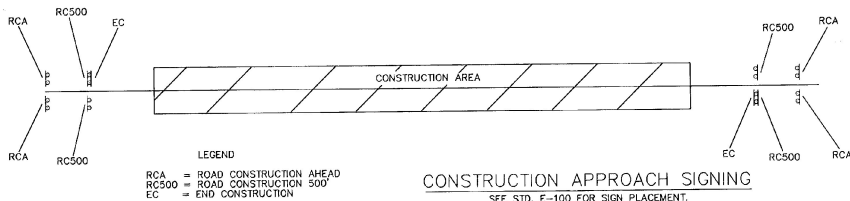
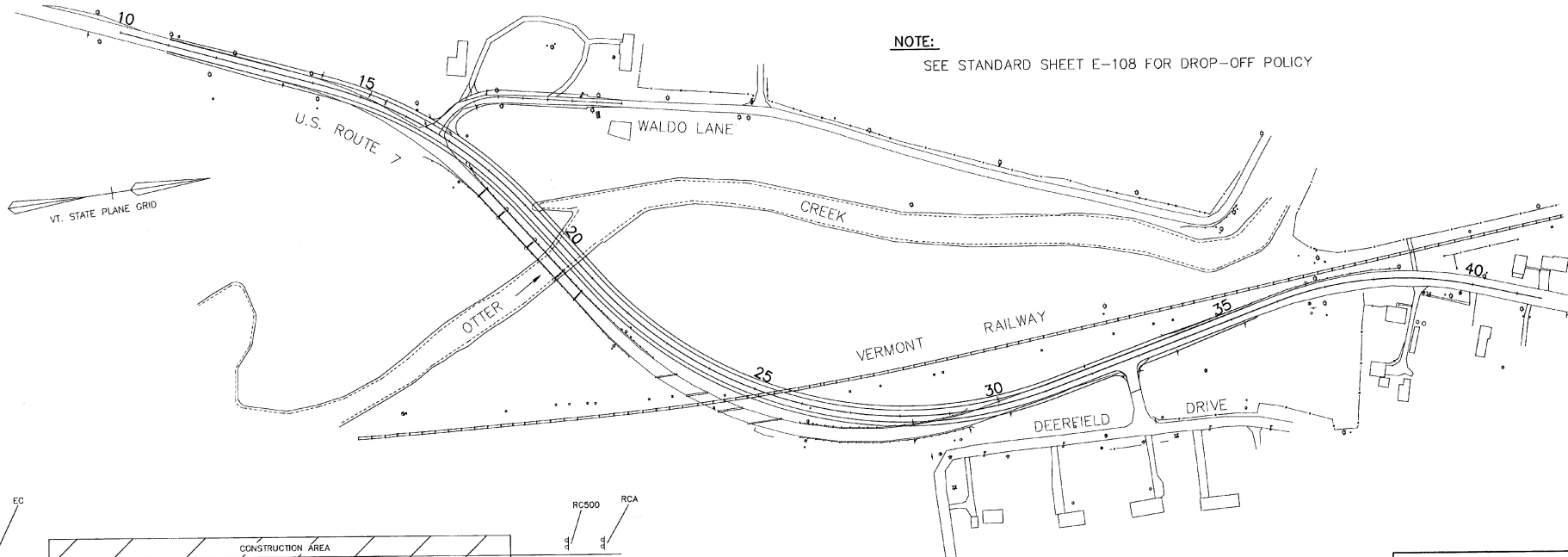


**TYP. DAYS END OPERATION**

DRUMS TO BE PLACED NOT LESS THAN TWO FEET FROM EDGE

**NOTE:**

SEE STANDARD SHEET E-108 FOR DROP-OFF POLICY



SURVEYED BY	VSC	DATE	07/90
DRAWN BY	JAC	DATE	11/94
TRACED BY	JAC	DATE	11/94
WALLINGFORD			
PROJ.	BRS	NO.	0137(13)
SHEET	24	OF	113 SHEETS