

**BREAKAWAY CABLE TERMINAL**  
31+28 ~ 31+51, RT

**QUARD RAIL APPROACH SECTION - TYPE II**  
23+41.5 ~ 23+54, RT  
24+23 ~ 24+35.5, LT  
25+38.5 ~ 25+51, RT  
27+75 ~ 27+87.5, LT

**REMOVAL AND DISPOSAL OF EXISTING GUARD RAIL**  
25+20 ~ 29+40, RT  
25+70, RT ~ 29+35, LT  
33+50 ~ 35+50, LT

**STEEL BEAM GUARD RAIL**  
23+00 ~ 23+41.5, RT  
23+00 ~ 24+23, LT  
25+51 ~ 31+26, RT  
27+87.5 ~ 32+38, LT  
32+50 ~ 35+50, LT

**U.S. ROUTE 7  
CONST.**

$\Delta = 68^{\circ}20' - 32^{\circ}LT$   
 $D = 8^{\circ}45' - 00^{\circ}$   
 $R = 848.83'$   
 $T = 576.24'$   
 $L = 1012.48'$   
 $E = 177.11'$   
BANK = .06 FT/FT

**TREATED TIMBER CURB**  
27+75 ~ 31+90

**ANCHOR FOR STEEL BEAM GUARD RAIL**  
32+38 LT  
32+50 LT

**CONSTRUCT APPROACH**  
32+77 RT (DEERFIELD DRIVE)

**CONSTRUCT DRIVE**  
32+44 LT (12' GRAVEL)

PERRY, FARWELL W. & JUDITH A.

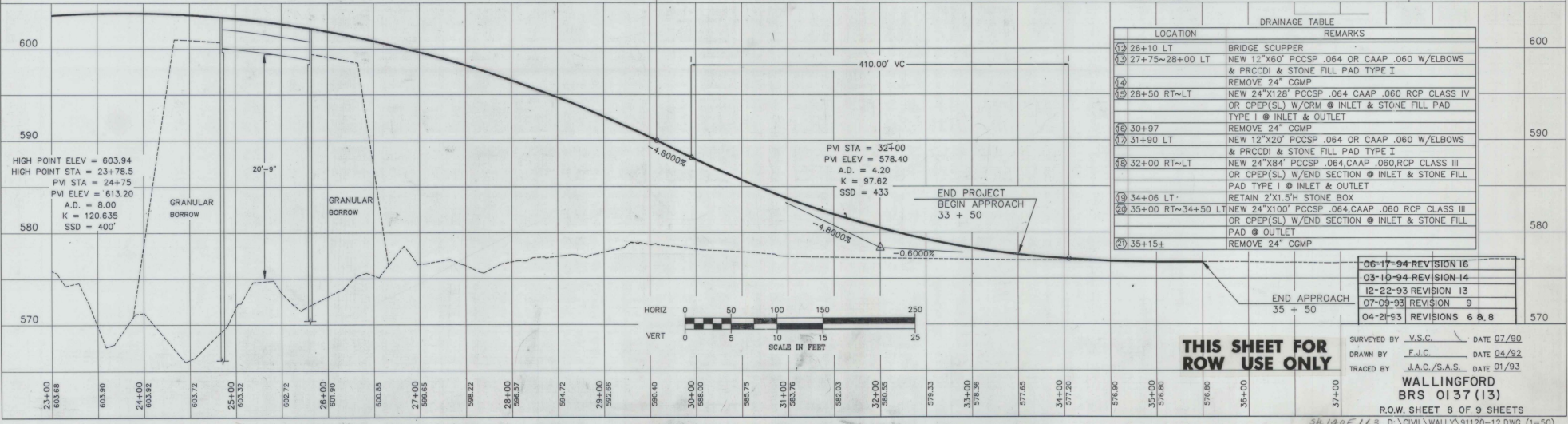
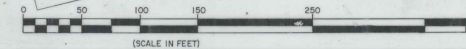
STATE OF VERMONT - LESSOR  
VERMONT RAILWAY INC. - LESSEE

**END R.O.W. PROJECT  
STA. 36+16 45' RT.**

**EXISTING U.S. ROUTE 7**

$\Delta = 32^{\circ}33' - 43^{\circ}RT$   
 $D = 8^{\circ}00' - 00^{\circ}$   
 $R = 716.20'$   
 $T = 209.17'$   
 $L = 407.03'$   
 $E = 29.92'$

**DATUM** NGVD 1922  
VERTICAL VT. STATE PLANE GRID  
HORIZONTAL VT. STATE PLANE GRID



**THIS SHEET FOR ROW USE ONLY**

06-17-94 REVISION 16  
03-10-94 REVISION 14  
12-22-93 REVISION 13  
07-09-93 REVISION 9  
04-21-93 REVISIONS 6 & 8

SURVEYED BY V.S.C. DATE 07/90  
DRAWN BY J.A.C. DATE 04/92  
TRACED BY J.A.C./S.A.S. DATE 01/93

**WALLINGFORD  
BRS 0137 (13)**  
R.O.W. SHEET 8 OF 9 SHEETS