

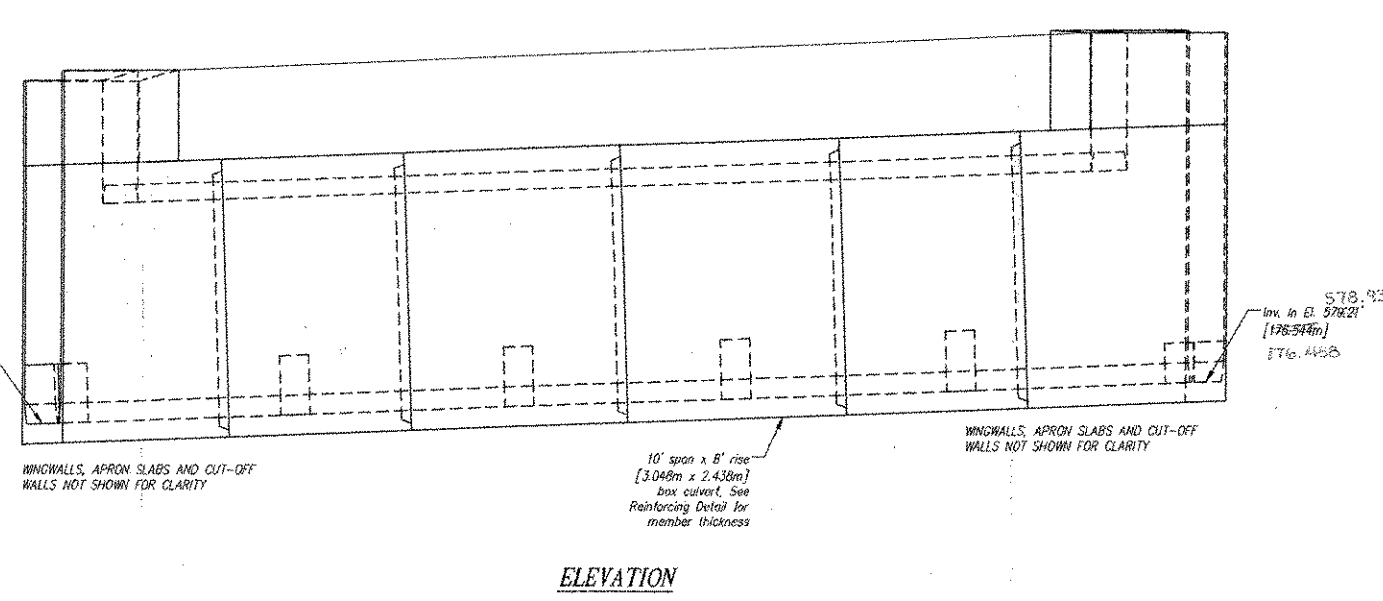
- GENERAL NOTES:**
- Reference Standards: *Local Bridge Design Specifications*
ASTM Standard Specifications for Highway Bridges
 - Design Parameters:
 Use Load: HS-20
 Earth Cover: 7 (0.85m)
 Concrete: Design strength $f_c = 5000$ psi (34.47 MPa)
 Unit weight = 150 pcf (2402 kg/m³)
 Reinforcing: ASTM A615 (rebar), Grade 60
 ASTM A706 (plates), Grade 60, epoxy coated
 ASTM A1035 (bar), G = 60 ksi (414 MPa)
 Soil: Unit weight = 125 pcf (2002 kg/m³)
 Maximum lateral pressure coefficient: .35
 Maximum lateral pressure coefficient: .50
 Cover to reinforcing: 1 1/2" (38mm) min.
 - Dimensions include a joint gap. Actual culvert piece length is 8'7 1/2".
 Shorter (or longer) as noted.
 - No dimensions implied by CS.
 - CS are shown for delivery and fit are shown as is.
 - Precast technical design taken from sheet 45 of 65 of the contract drawings.

PRECAST CONCRETE WEIGHTS (ESTIMATED)

ITEM	QTY	WEIGHT (LBS)	WEIGHT (KGS)
AP1	2	11,500	5,215
AP2	2	11,500	5,215
C1	1	7,200	3,267
C2	1	7,200	3,267
C3	1	7,200	3,267
C4	1	7,200	3,267
C5	1	7,200	3,267
C6	1	7,200	3,267
CHAMBER	1	22,000	9,979
TOTAL		100,000	45,358

CONCRETE WEIGHTS (ESTIMATED)

ITEM	QTY	WEIGHT (LBS)	WEIGHT (KGS)
WALL	1	1,200	544
WALL	1	1,200	544
WALL	1	1,200	544
WALL	1	1,200	544
TOTAL		4,800	2,176



RECEIVED
 DATE: JUL 18 2007
 BY: [Signature]

Contractor is to verify that all information shown on drawings has been thoroughly checked, verified, and approved by the contractor's design engineer, and that the contractor is responsible for the accuracy of the drawings. The contractor shall be responsible for the accuracy of the drawings. The contractor shall be responsible for the accuracy of the drawings. The contractor shall be responsible for the accuracy of the drawings.

REV.	DATE	DESCRIPTION	BY
1			
2			
3			

This drawing is based upon information provided from the following documents and/or sources:

- Engine: VADT
- Project No: STP RS 0107 (B)
- Drawings: Paved - STP RS 0107(B)
- Sheets: 38 through 45
- Specifications: N/A
- Other Sources:

CSI Concrete Systems Inc.
 9 Commercial Park Way
 Phone: 802-889-4121
 Fax: 802-889-4117

VAOT STP RS 0107(B)
 14 S. 75th St.
 Phone: 802-242-2000
 Fax: 802-242-2000

RENAUD BROTHERS
 POWNAL STP RS 0107 (B)
 POWNAL, VT
 BOX CULVERT LAYOUT
 Drawing No: C18733-L01-A
 Quantity: 1
 Project No: 018733-L01-A

SHEET 1 OF 3