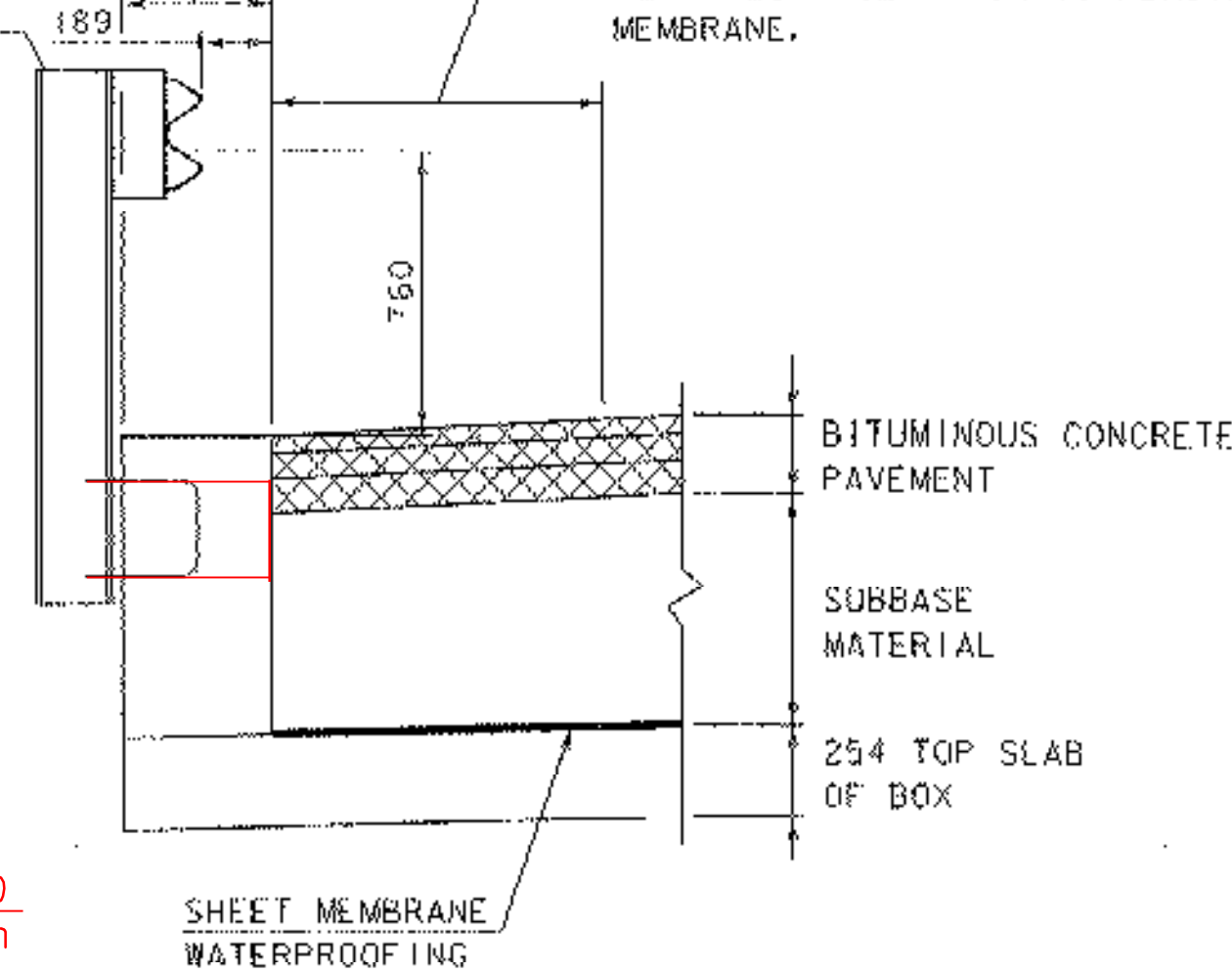


400 HEADWALL
CONCRETE, HIGH
PERFORMANCE CLASS B

BRIDGE RAILING
SEE STD. SB-R6-82M
TYPE C

BLAST CLEAN TOP OF CONCRETE 900mm
FROM FACE OF HEADWALL AND 80mm UP
HEADWALL FACE PRIOR TO PLACING
MEMBRANE.

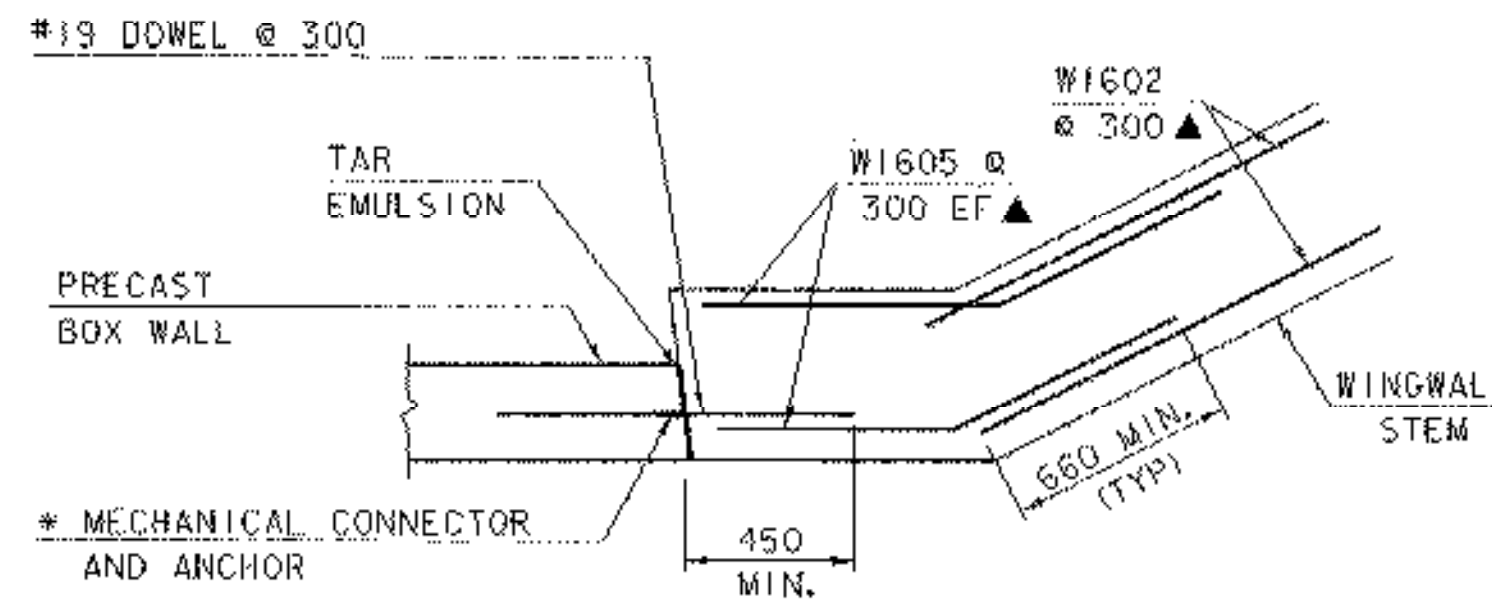


CLASS B PLACED
EXTENSION 0.25m
#6 @ 12" DRILL
AND EPOXY GROUT
2 ~ #5
1/4" PLATE

HIGH STRENGTH
GALVANIZED BOLT
(18") 4 PER POST

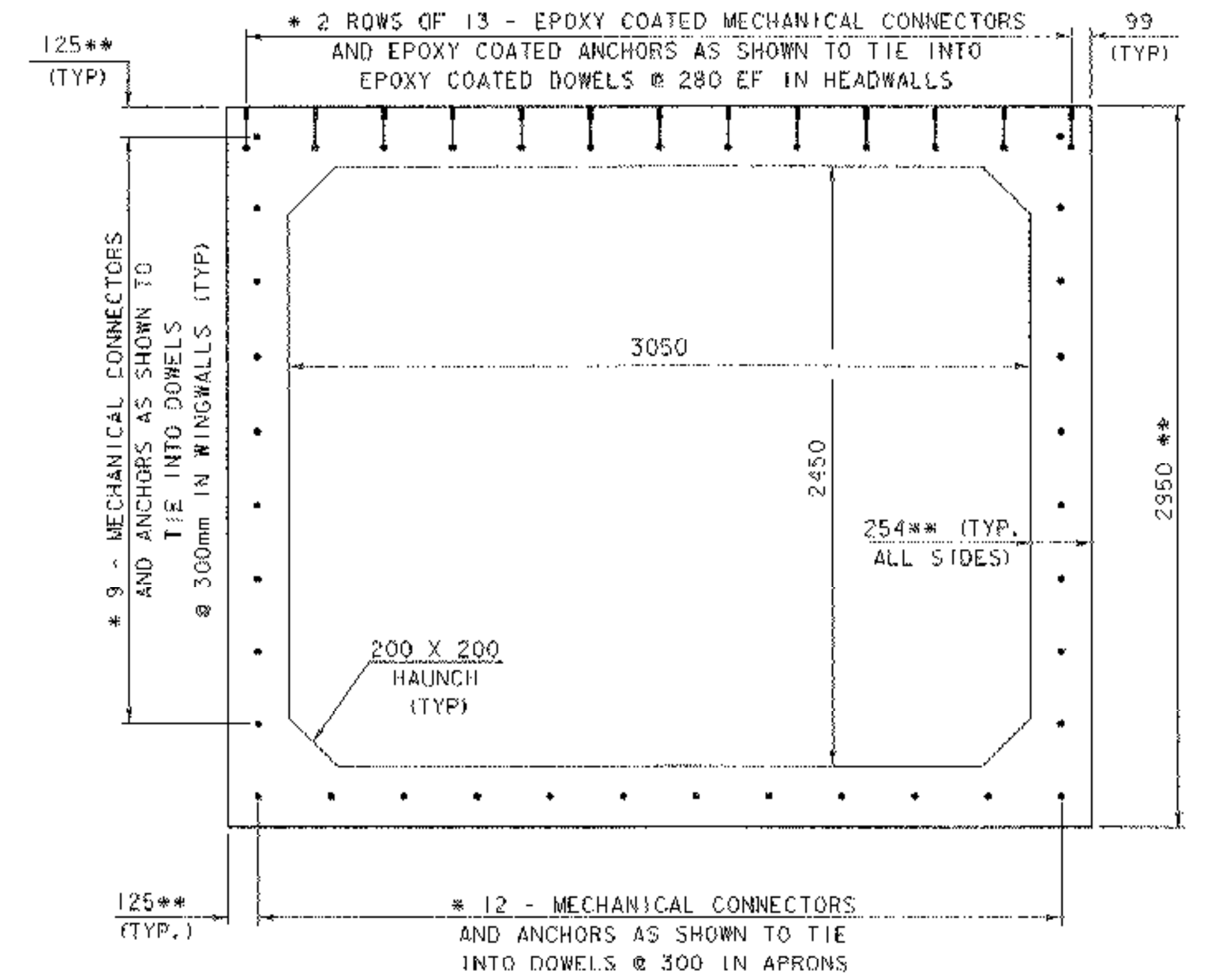
LEFT HEADWALL

HEADWALL DETAIL

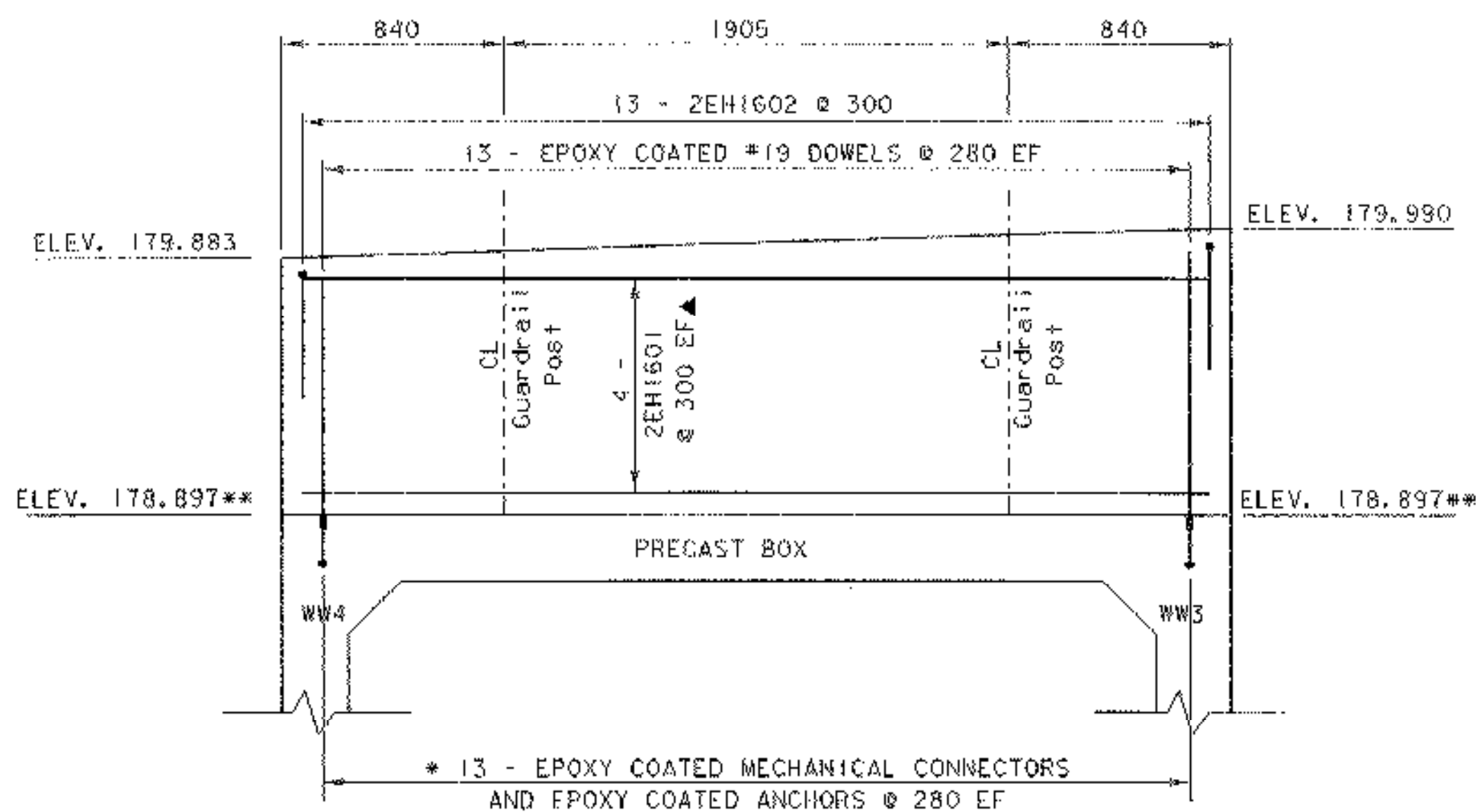


TYPICAL WINGWALL CORNER DETAIL

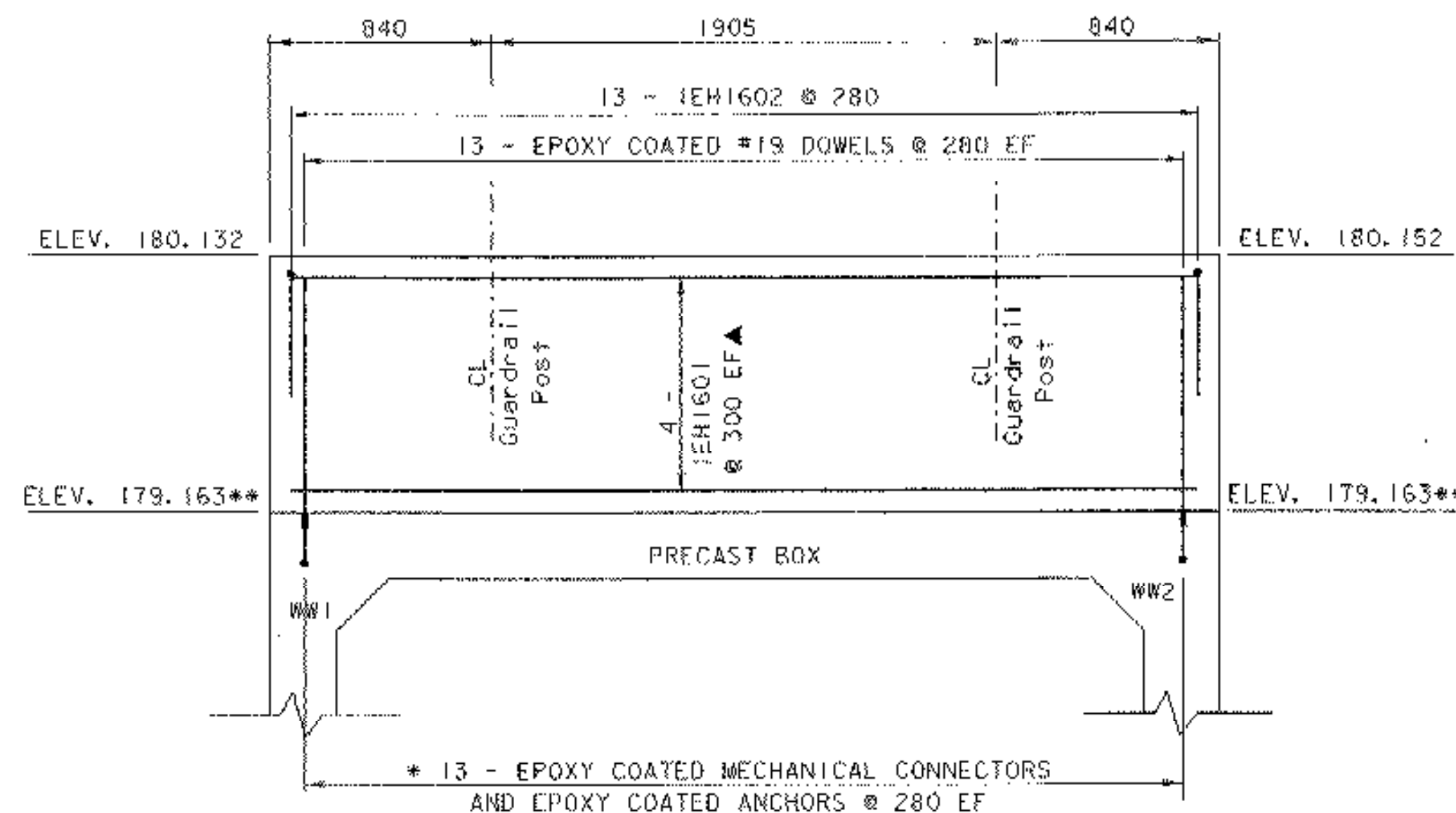
** ASSUMED DIMENSIONS AND ELEVATIONS.
ACTUAL DIMENSIONS AND ELEVATIONS WILL
BE DETERMINED BY THE FABRICATOR.



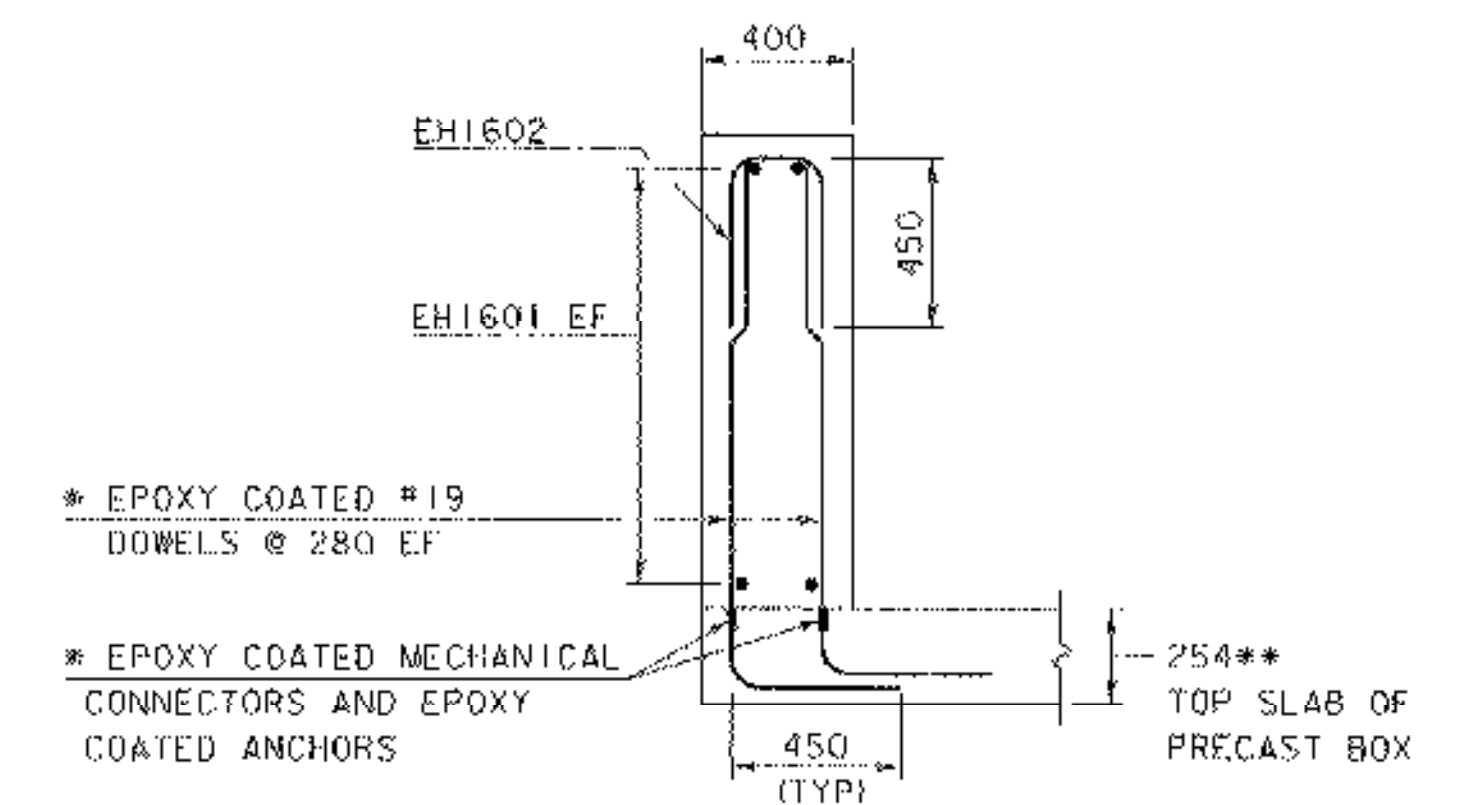
**PRECAST BOX TYPICAL
(END SECTION)**



HEADWALL #2 (OUTLET)



HEADWALL #1 (INLET)



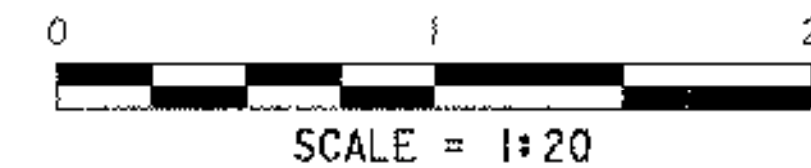
HEADWALL TYPICAL

* DOWELS, MECHANICAL CONNECTORS AND ANCHORS
ARE TO BE PROVIDED BY THE PRECAST BOX
FABRICATOR AND ARE NOT REFLECTED ON
THE REINFORCING STEEL SCHEDULE.

NOTE:

NF - NEAR FACE
FF - FAR FACE
EF - EACH FACE
▲ - CUT TO FIT IN FIELD
80 CLR. UNLESS OTHERWISE
SPECIFIED ON THE PLANS.

SEE PRECAST CONCRETE BOX NOTES ON SHEET 40



HEADWALL DETAILS

PROJECT NAME: POWNAL	PLOT DATE: 10-MAY-2007
PROJECT NUMBER: STP RS 0107 (8)	DRAWN BY: R. PELLETT
FILE NAME: /84c028/str/sc028ww.dgn	CHECKED BY: T. SUMNER
PROJECT MANAGER: W. SYMONDS	SHEET 45 OF 65
DESIGNED BY: T. FILLBACH	
sc028hw.i	