

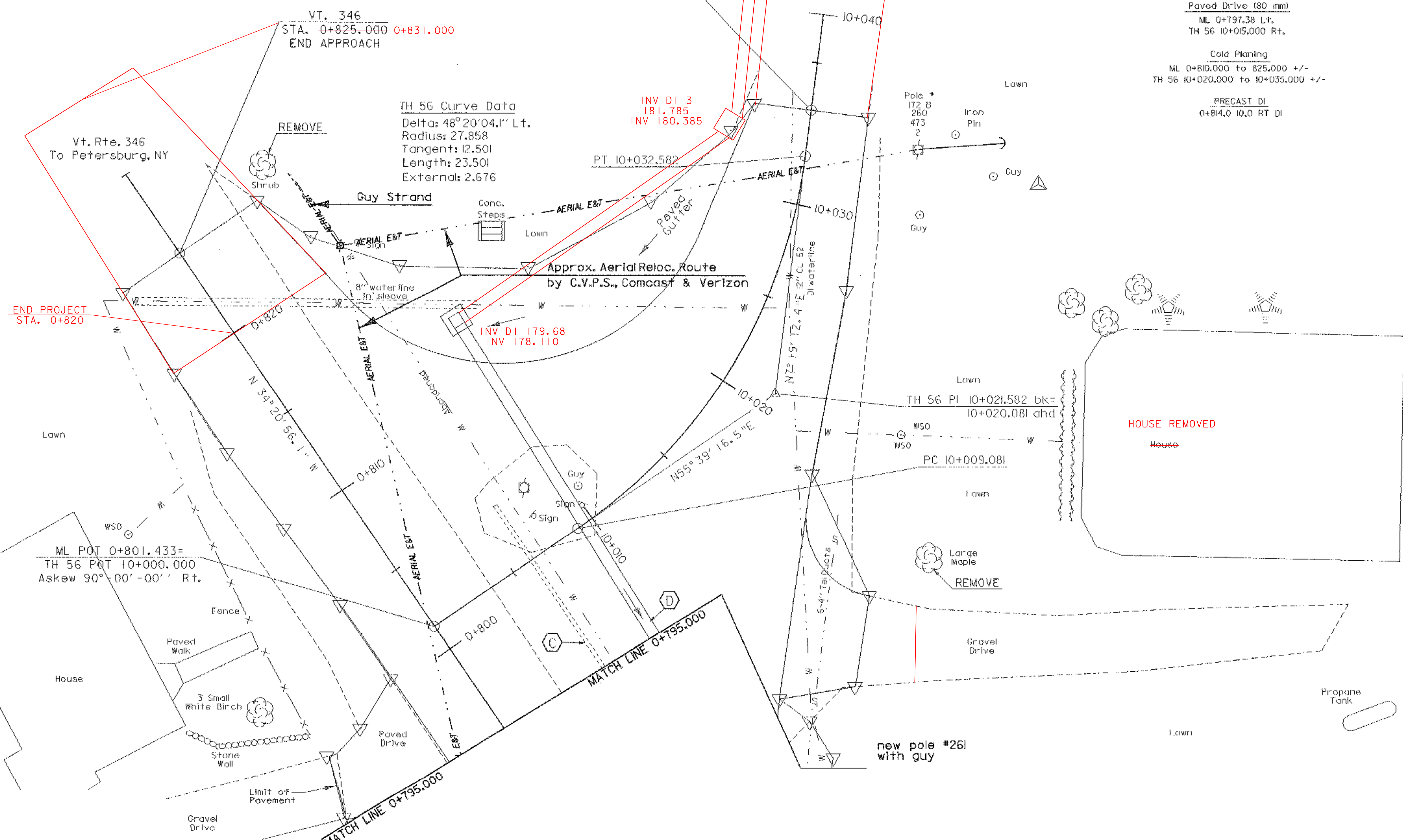
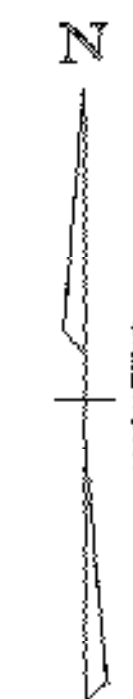
- C** Existing 200 pipe, REMOVE
- D** 0+787.500, 9.200 m Rt. - 0+814.000, 10.000 m Rt.  
New 600 x 28.0 m Option Pipe, with new RC DI@ Inlet.

Bituminous Concrete Gutters and Traffic Islands  
TH56 10+035.000 Lt to 0+825.000 Rt

Paved Drive (80 mm)  
ML 0+797.38 Lt.  
TH 56 10+015.000 Rt.

Cold Planing  
ML 0+810.000 to 825.000 +/-  
TH 56 10+020.000 to 10+035.000 +/-

PRECAST DI  
0+814.0 10.0 RT DI



**TH 56 Curve Data**  
Delta: 48° 20' 04.1" Lt.  
Radius: 27.858  
Tangent: 12.501  
Length: 23.501  
External: 2.676

INV DI 3  
181.785  
INV 180.385

INV DI 179.68  
INV 178.110

END RE-CONSTRUCTION  
STA 10+054

END PROJECT  
STA. 0+820

ML POT 0+801.433=  
TH 56 POT 10+000.000  
Askew 90°-00'-00" Rt.

new pole #261  
with guy

**PLAN SHEET #2**

PROJECT NAME: POWNAL	PLOT DATE: 10-MAY-2007
PROJECT NUMBER: STP RS 0107(8)	DRAWN BY: G. SHANGRAW
FILE NAME: /84c028/str/sc028bdr.dgn	CHECKED BY: T. FILLBACH
PROJECT LEADER: W. SYMONDS	SHEET 17 OF 65
DESIGNED BY: G. SHANGRAW	
sb2541a2.i	

