

GPS CONTROL POINTS

**HVCTRL # 1**  
 Standard Disk Stamped  
 Pownal  
 NORTH = 28861.334  
 EAST = 440087.102  
 ELEV. = 170.190

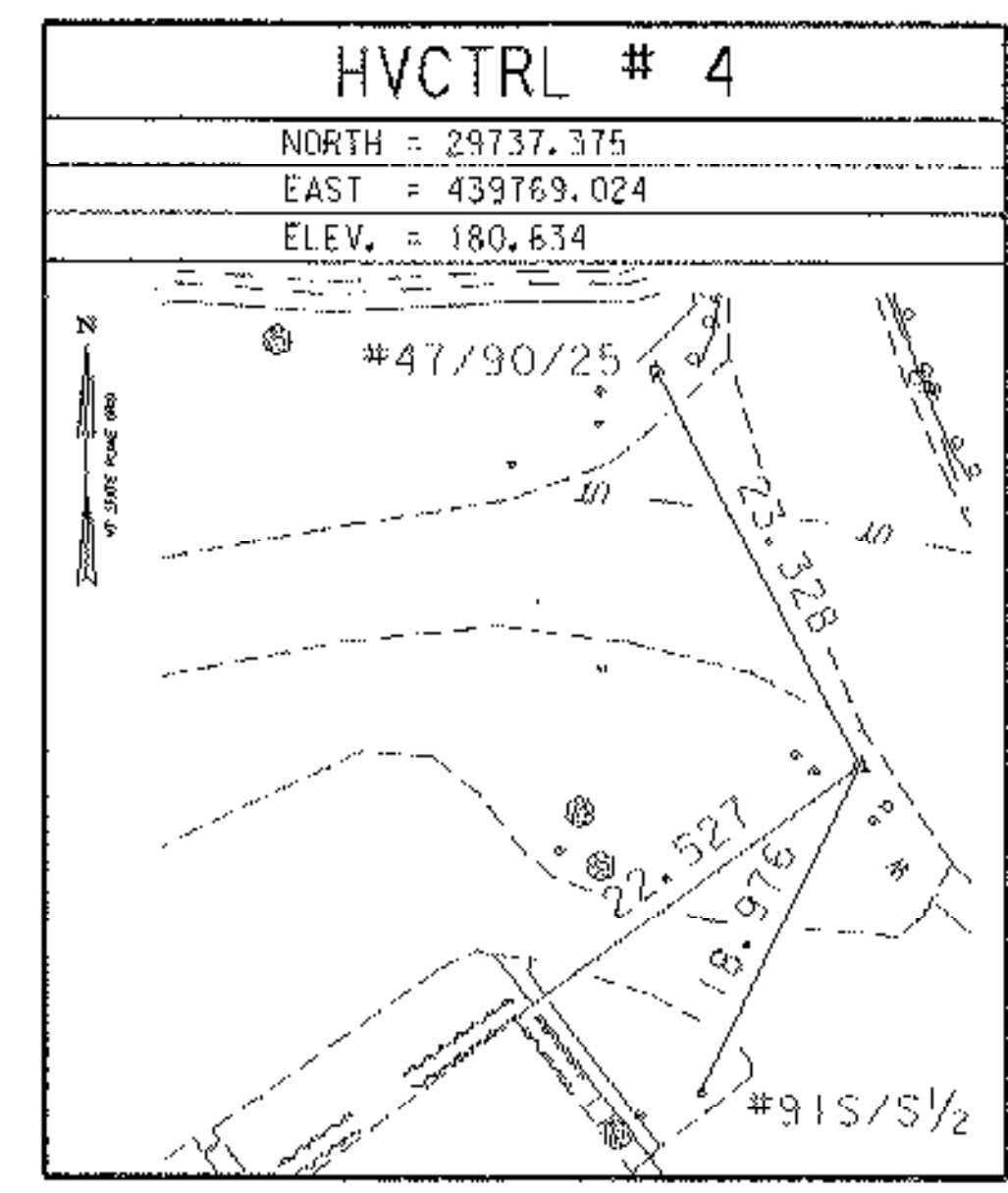
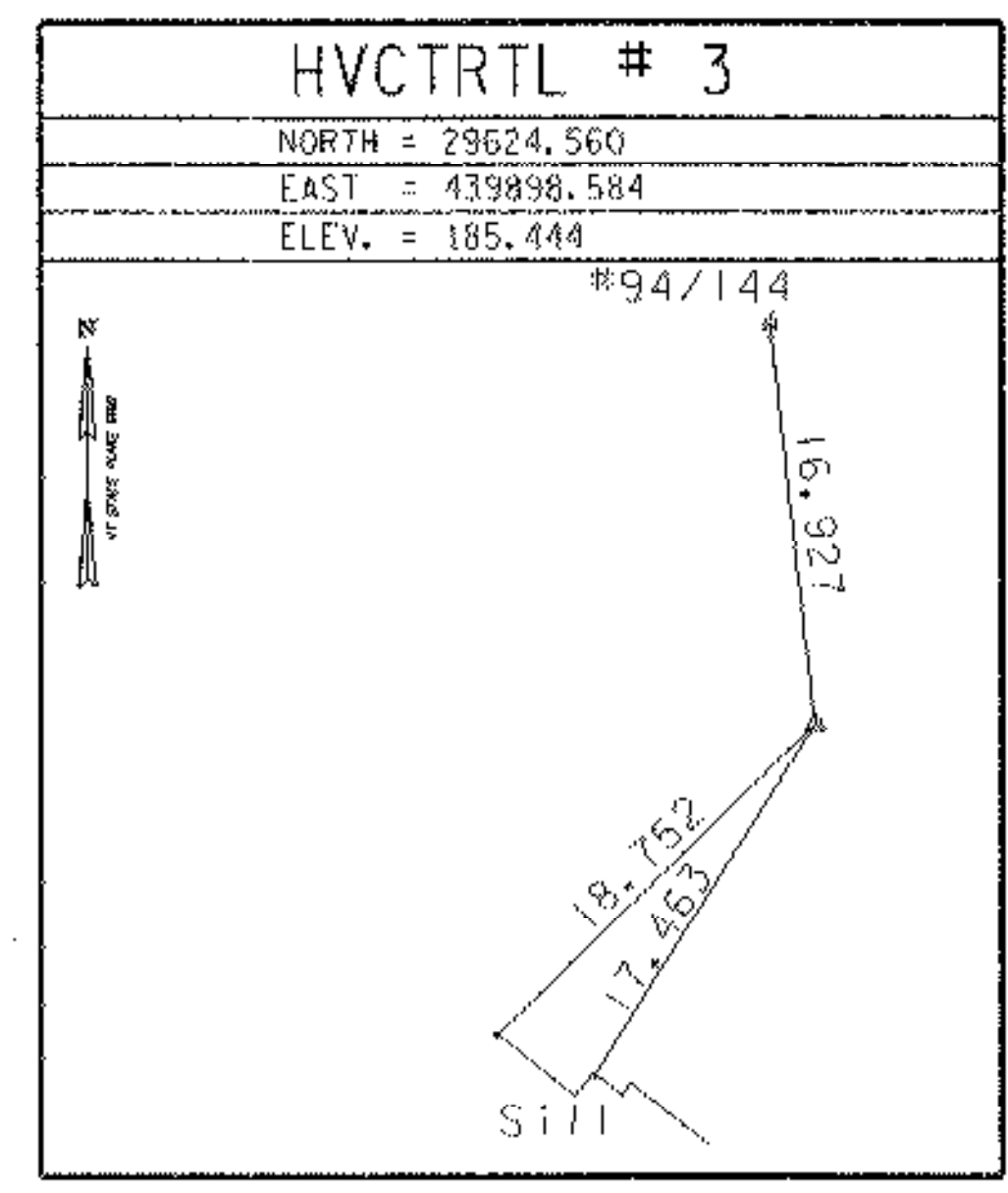
THE MARK IS SET AT THE INTERSECTION OF U.S. ROUTE 7 AND VT. ROUTE 346 IN THE NORTHEAST CORNER OF A TRIANGULAR GRASS ISLAND ON THE WEST SIDE OF U.S. ROUTE 7. THE MARK IS SET FLUSH WITH THE GROUND SURFACE IN THE TOP OF A 30 CM DIAMETER CONCRETE MONUMENT SET 1.1 M (3.6 FT) DEEP. IT IS 2.8 M (9.2 FT) WEST OF AND ABOUT 0.2 M (0.7 FT) LOWER THAN THE WEST EDGE OF PAVEMENT OF U.S. ROUTE 7, 8.8 M (28.9 FT) SOUTH OF THE SOUTH EDGE OF PAVEMENT OF VT. ROUTE 346, 22.4 M (73.5 FT) NORTH OF A 1.2 M (3.9 FT) X 1.2 M (3.9 FT) DRAINAGE INLET, 30.0 M (98.4 FT) EAST OF A HYDRANT, AND 5.3 M (17.4 FT) SOUTH OF LIGHT POLE NO. 988 AND A FIBERGLASS WITNESS POST.

**HVCTRL # 2**  
 Standard Disk Stamped  
 Pownal Az Mk  
 NORTH = 29497.789  
 EAST = 440041.558  
 ELEV. = 184.550

TO REACH FROM THE INTERSECTION OF U.S. ROUTE 7 AND VT. ROUTE 346 IN POWNAL GO SOUTH ALONG U.S. ROUTE 7 FOR 0.4 MI (0.6 KM) TO THE MARK ON THE RIGHT. THE MARK IS SET FLUSH WITH THE GROUND SURFACE IN THE TOP OF A 30 CM DIAMETER CONCRETE MONUMENT SET 1.1 M (3.6 FT) DEEP. IT IS 4.5 M (14.8 FT) WEST OF AND ABOUT 0.6 M (2.0 FT) LOWER THAN THE WEST EDGE OF PAVEMENT OF U.S. ROUTE 7, 25.0 M (82.0 FT) EAST OF THE EAST RAIL OF THE B AND M RAILROAD, AND 5.5 M (18.0 FT) SOUTHEAST OF POLE NO. 567133 AND A FIBERGLASS WITNESS POST.

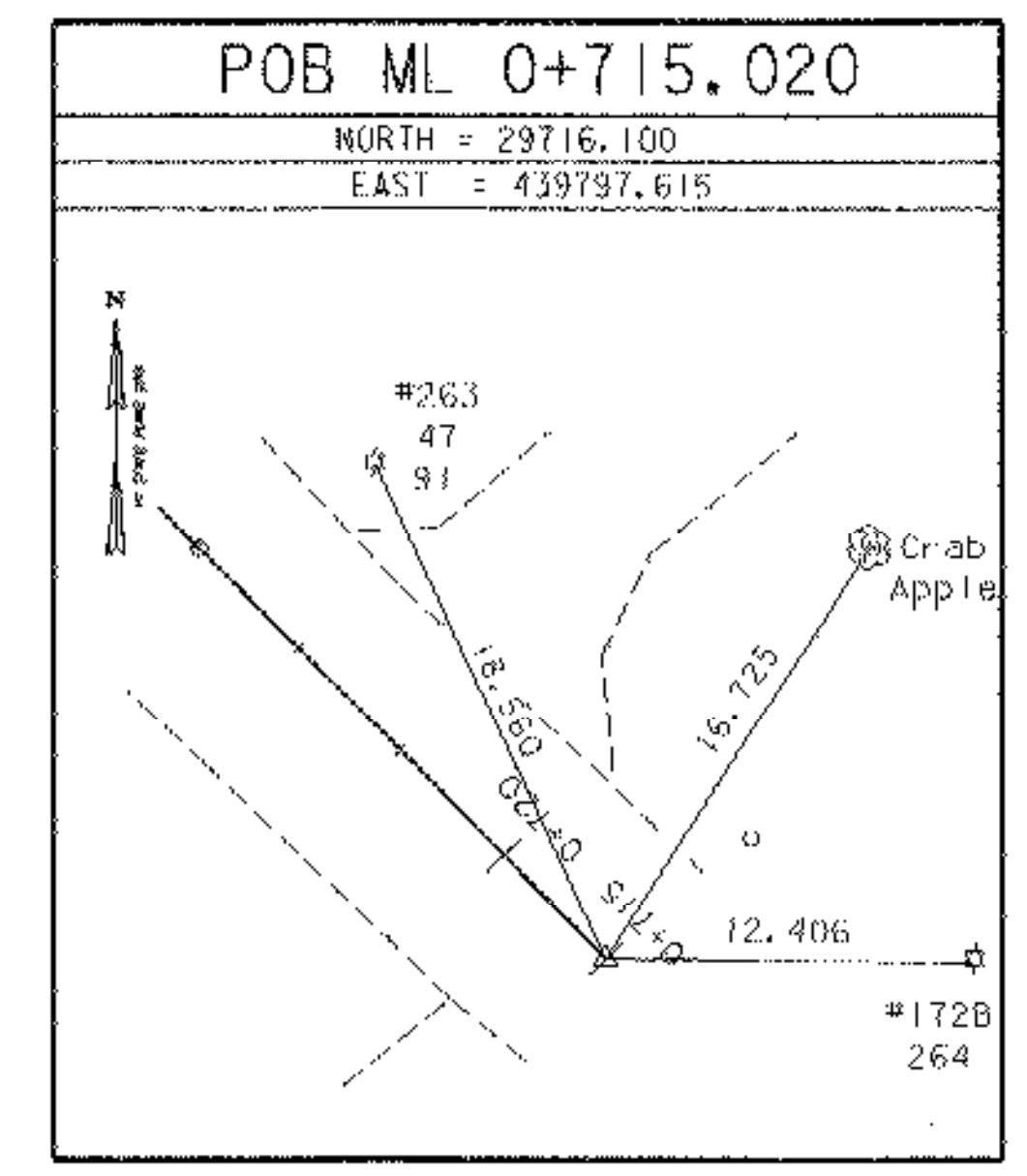
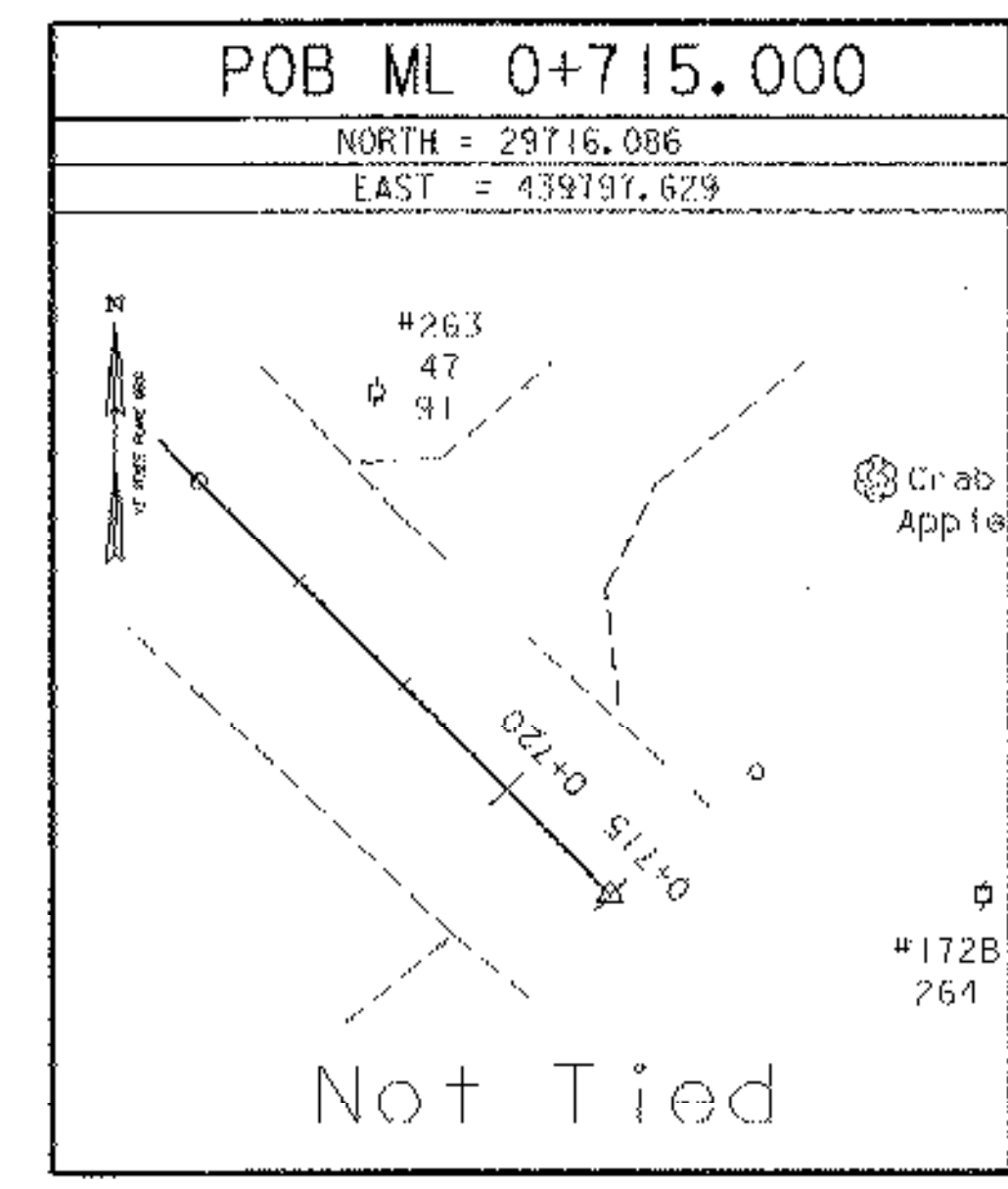
\* Description provided by Vermont Agency of Transportation Geodetic Survey Unit

TRAVERSE TIES

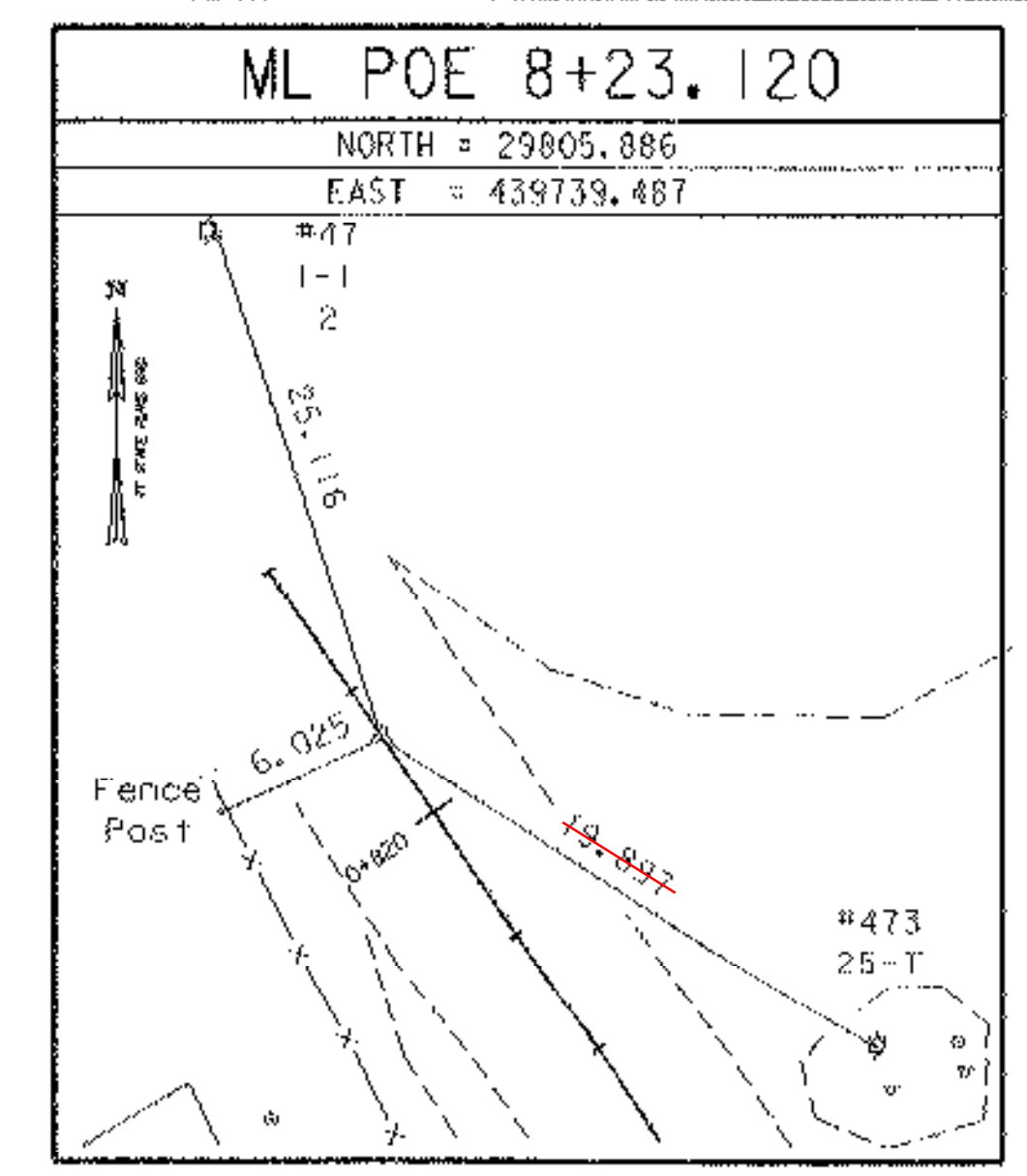
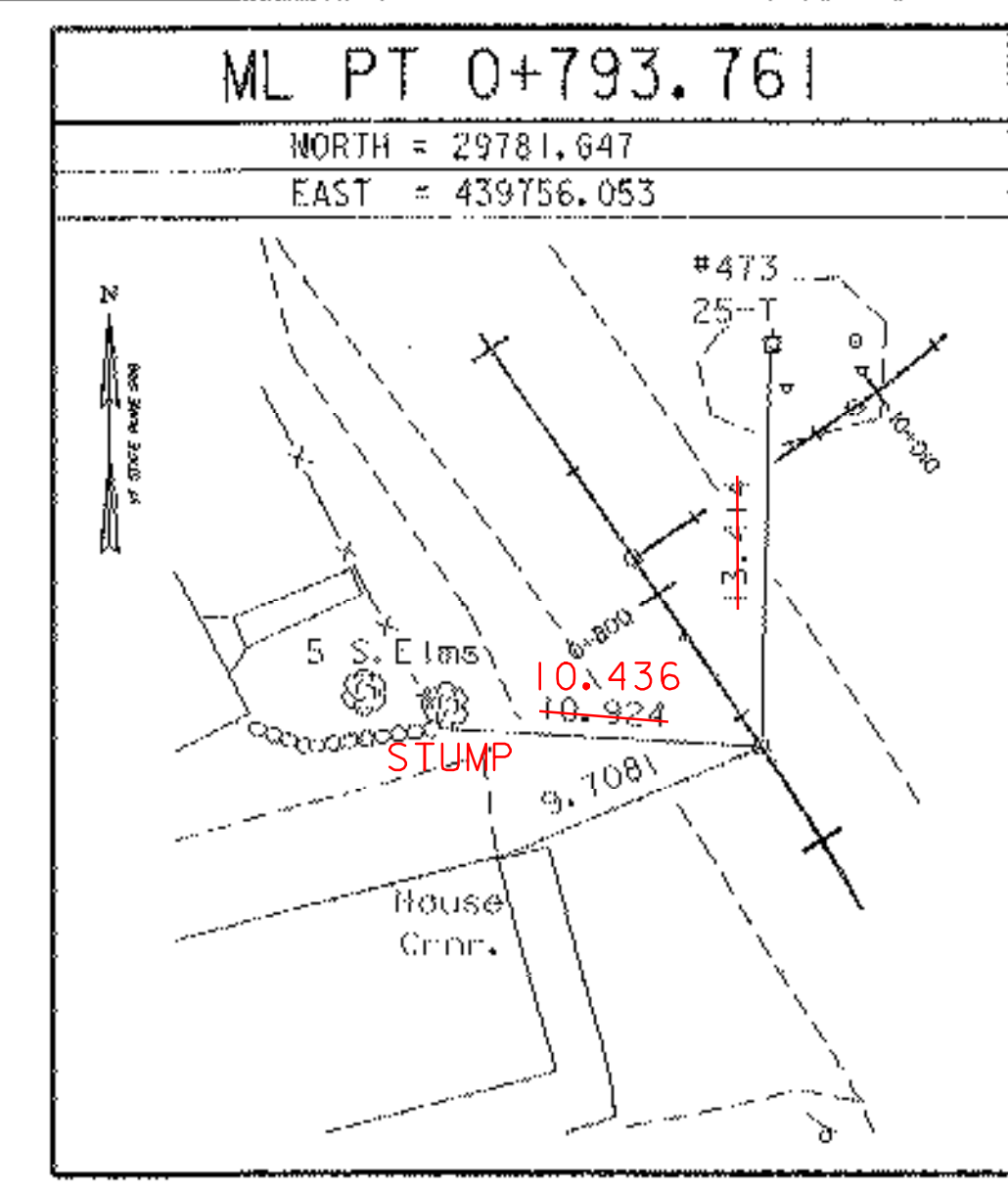
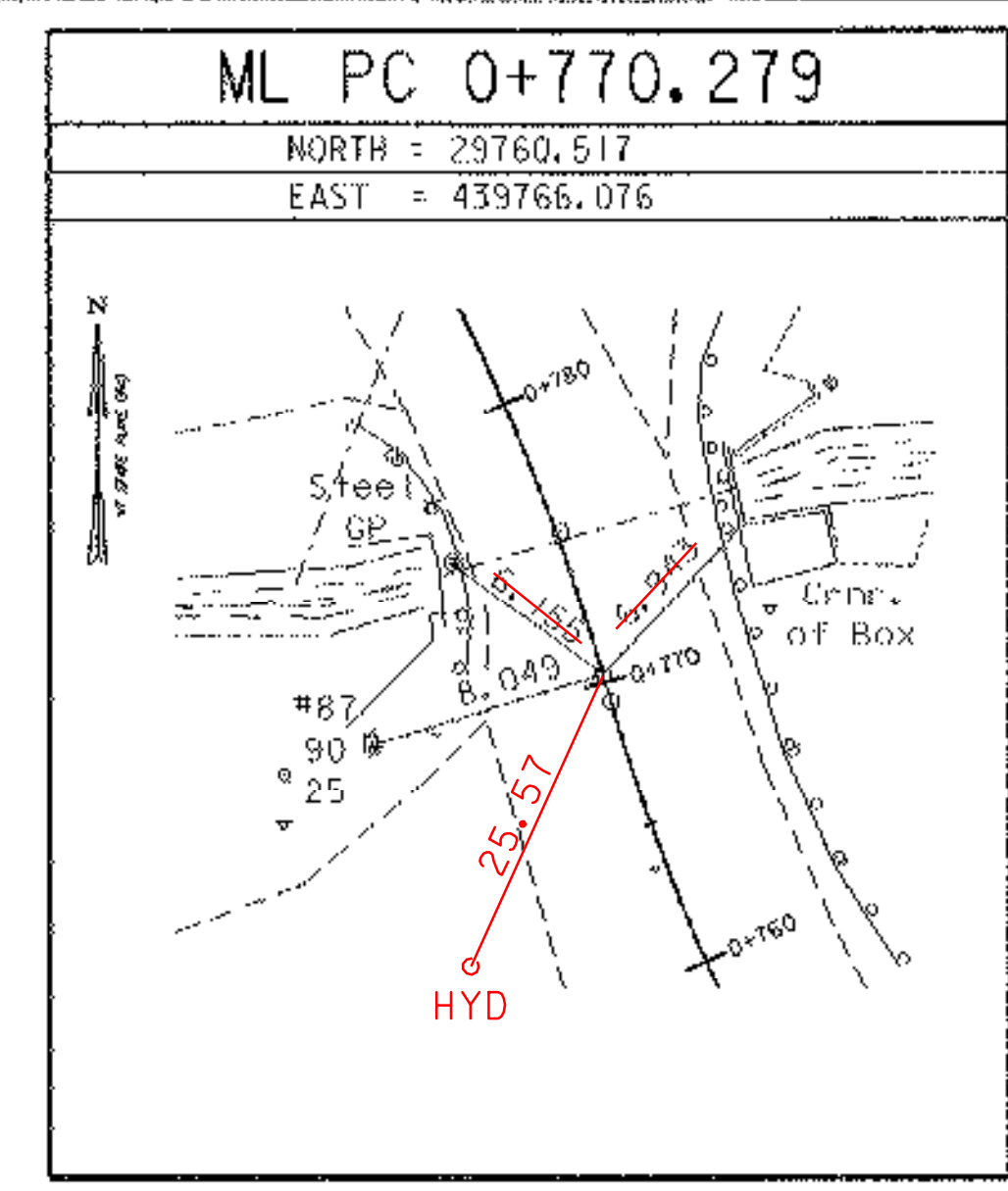
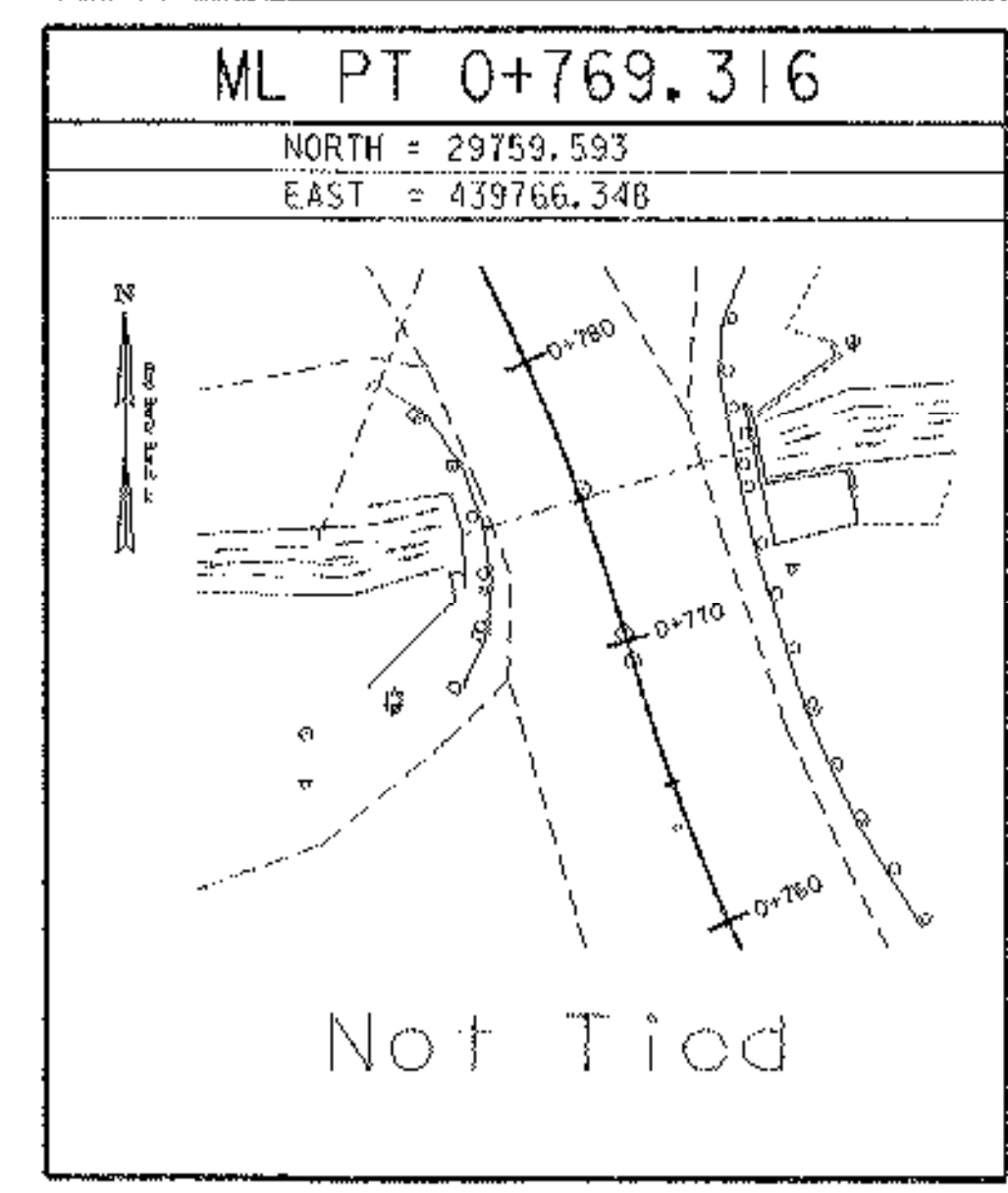
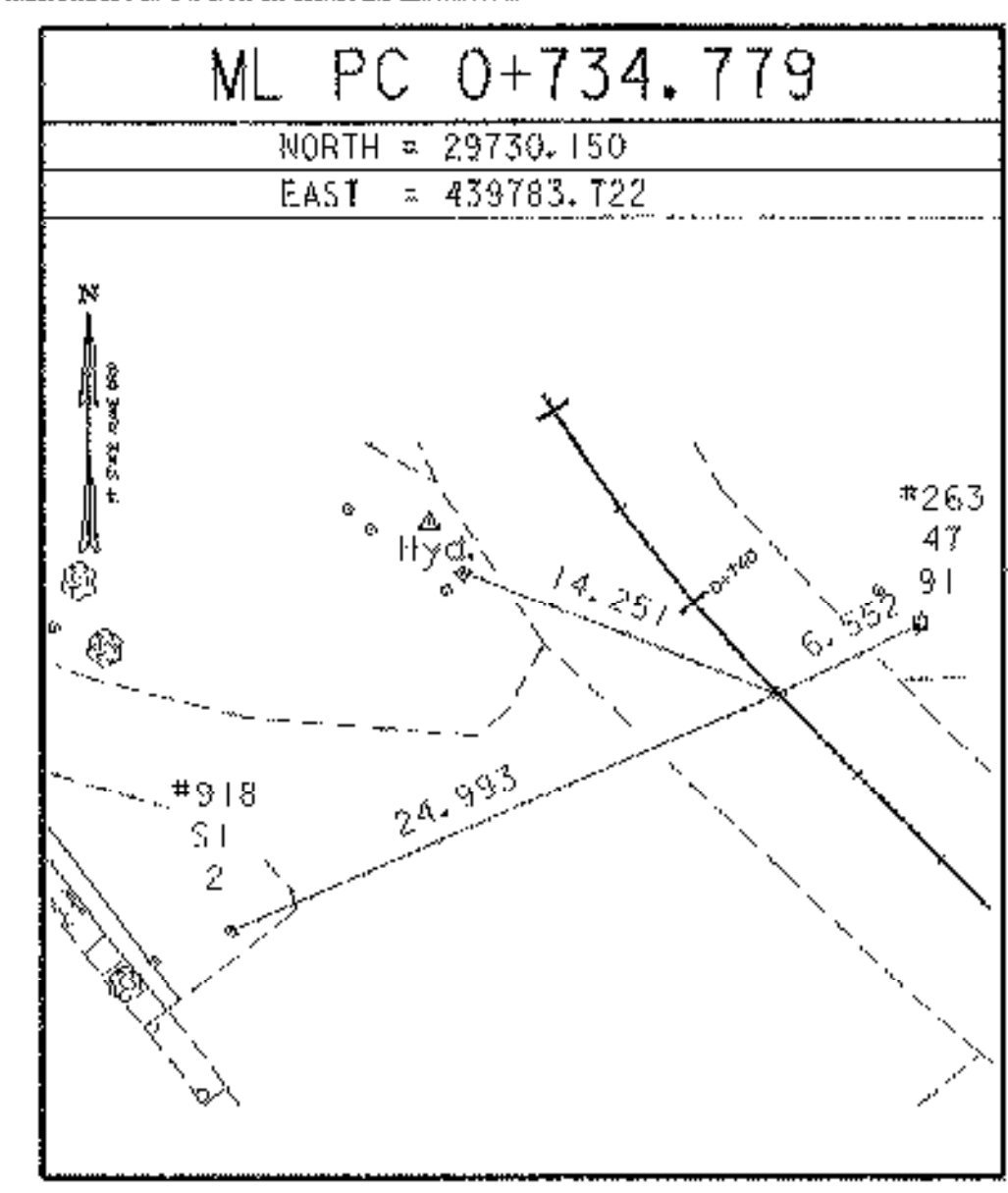


\* Main Traverse Completed 09/22/03 by L. Orvis P.C. & R. Bullock

ALIGNMENT TIES



ALIGNMENT TIES



\* Alignment Staked NOT staked coordinates verified 02/03/03

DATUM	
VERTICAL	NAVD 88
HORIZONTAL	NAD 88 (96)
ADJUSTMENT	Least Sq.

PROJECT NAME:	Pownal	FILE NAME:	84c028/survey/xc028t1.dgn	PLOT DATE:	10-MAY-2007
PROJECT NUMBER:	STP RS 0107 (8)	PROJECT LEADER:	W. SYMONDS	DRAWN BY:	R. Bullock
		DESIGNED BY:	L. ORVIS	CHECKED BY:	J. HULETT
			sc028t1.d	SHEET	14 OF 65