

**SEEDING FORMULA
URBAN AREAS**

% WT.	kg/ha	NAME	PUR %	GERM %
42.5	38.0	CREeping RED FESCUE	98	85
10.0	9.0	PERENNIAL RYE GRASS	95	90
42.5	38.0	KENTUCKY BLUE GRASS	85	85
5.0	5.0	ANNUAL RYE GRASS	95	85
100.0	90.0			

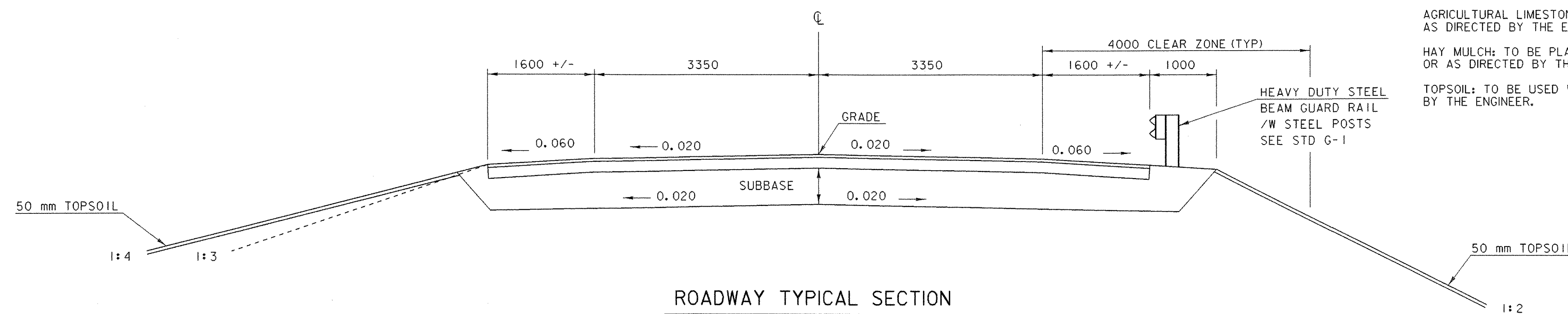
GENERAL NOTES

- SEED MIXTURE: SHALL NOT HAVE A WEED CONTENT EXCEEDING 0.40% BY WEIGHT AND SHALL BE FREE OF ALL NOXIOUS SEED.
- SEED: TO BE APPLIED PER SEEDING FORMULAS OR AS DIRECTED BY THE ENGINEER.
- FERTILIZER: FORMULA 10-20-10, TO BE USED WITH SEED, APPLIED AT THE RATE OF 560 kg/ha. (HYDRO SEEDERS MAY USE 19-19-19 FORMULA).
- AGRICULTURAL LIMESTONE: TO BE APPLIED AT THE RATE OF 4500 kg/ha, OR AS DIRECTED BY THE ENGINEER.
- HAY MULCH: TO BE PLACED ON EARTH SLOPES AT THE RATE OF 4500 kg/ha, OR AS DIRECTED BY THE ENGINEER.
- TOPSOIL: TO BE USED WITH SEED AS INDICATED ON THE PLANS, OR AS DIRECTED BY THE ENGINEER.

MATERIAL ITEM	TOLERANCE
PAVEMENT	±5 mm TOTAL THICKNESS
AGGREGATE SURFACE COURSE	± 10 mm
BASE COURSE	± 10 mm
SUBBASE	± 30 mm

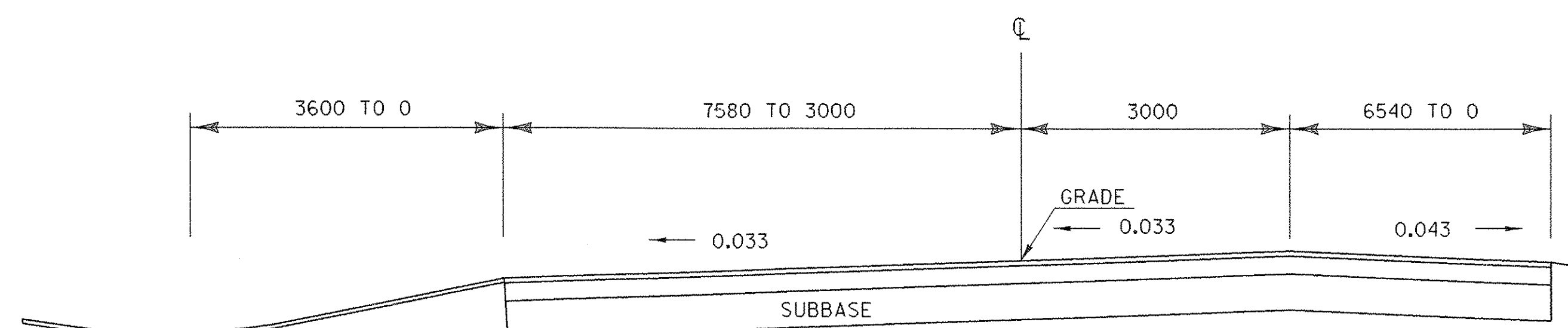
* EMULSIFIED ASPHALT - MIN APPLICATION OF 0.12 LITERS PER SQUARE METER OF BITUMINOUS CONCRETE PAVEMENT.

80 mm BITUMINOUS CONCRETE PAVEMENT TYPE IV (2 LIFTS)
150 mm BITUMINOUS CONCRETE PAVEMENT TYPE II(2 LIFTS)
910 mm SUBBASE OF DENSE GRADED CRUSHED STONE

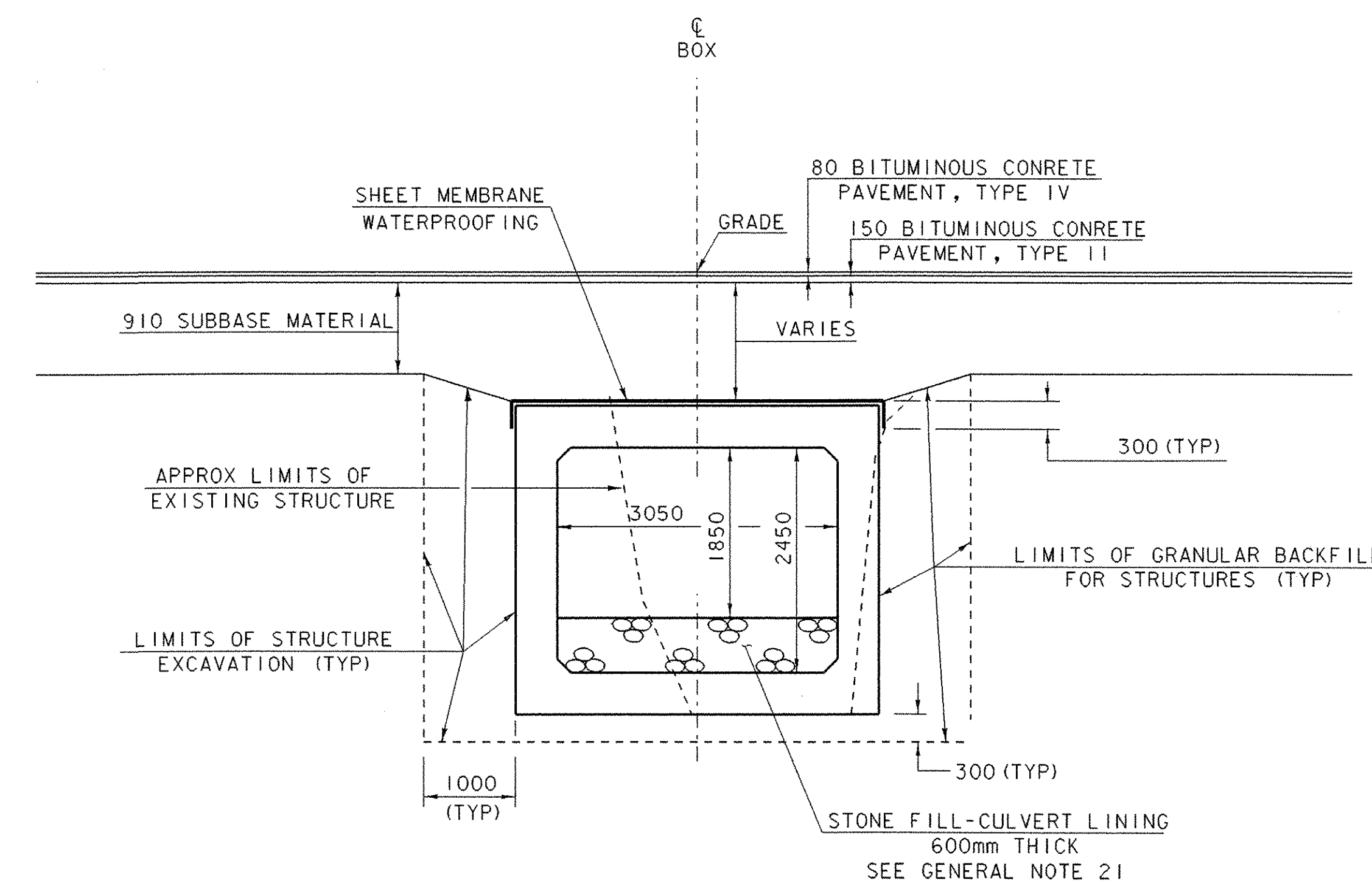


ROADWAY TYPICAL SECTION
(NOT TO SCALE)

80 mm BITUMINOUS CONCRETE PAVEMENT TYPE IV (2 LIFTS)
150 mm BITUMINOUS CONCRETE PAVEMENT TYPE II(2 LIFTS)
375 mm SUBBASE OF DENSE GRADED CRUSHED STONE



ROADWAY TYPICAL SECTION (TH 56)
(NOT TO SCALE)



TYPICAL BOX SECTION
(NOT TO SCALE)

SEE SHEET 63 FOR CHANNEL SECTION

TYPICAL SECTIONS

PROJECT NAME: POWNAL	PLOT DATE: 10-MAY-2007
PROJECT NUMBER: STP RS 0107 (8)	DRAWN BY: K. RUTTER
FILE NAME: /84c028/str/sc028typ.dgn	CHECKED BY: T. SUMNER
PROJECT MANAGER: W. SYMONDS	SHEET 3 OF 65
DESIGNED BY: K. RUTTER	