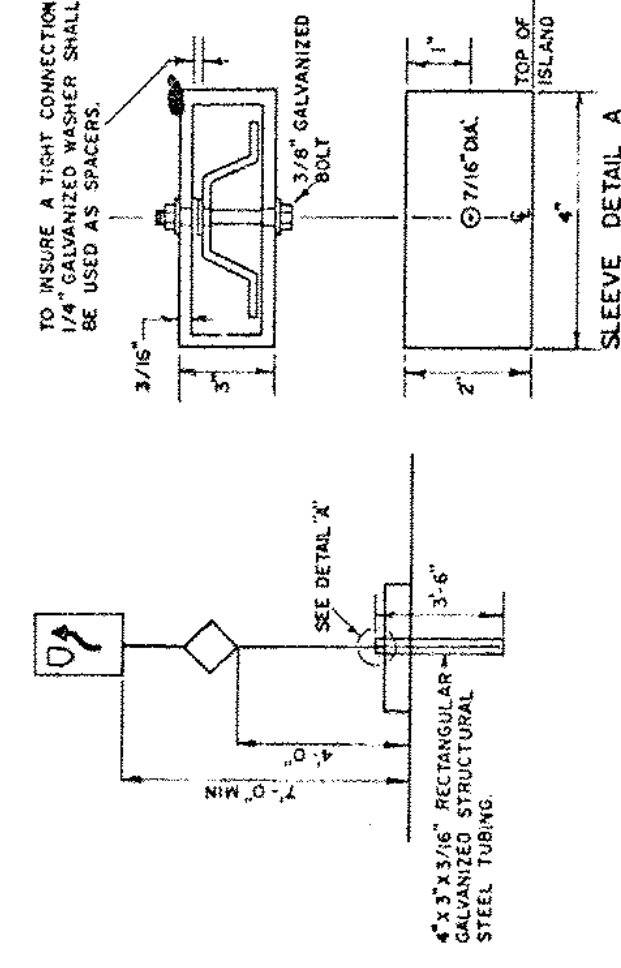
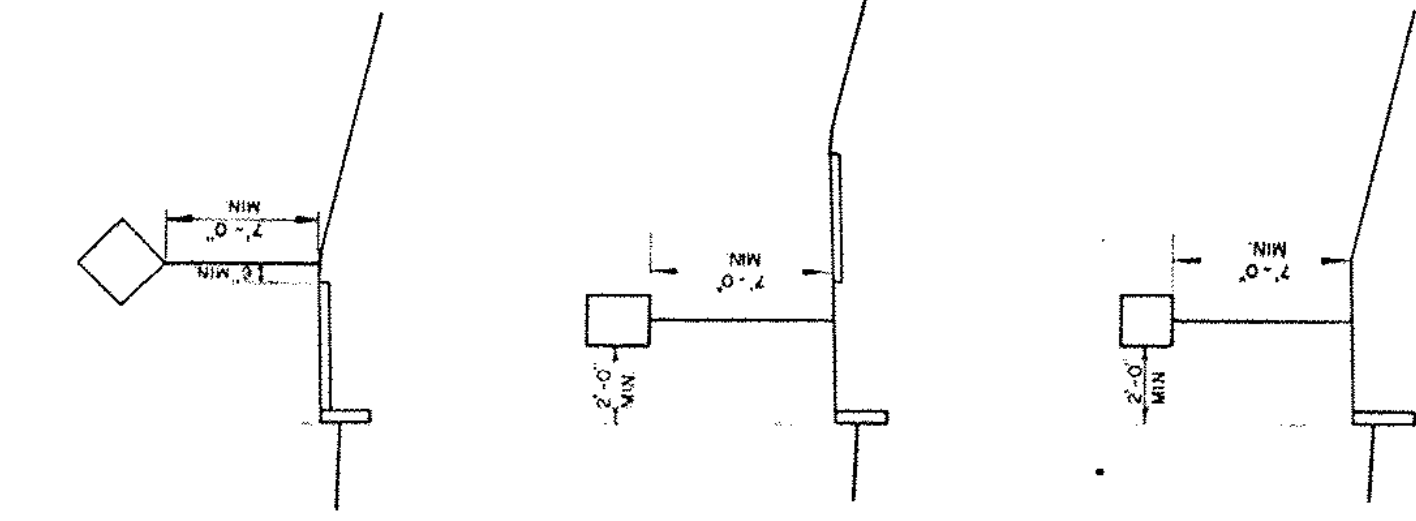
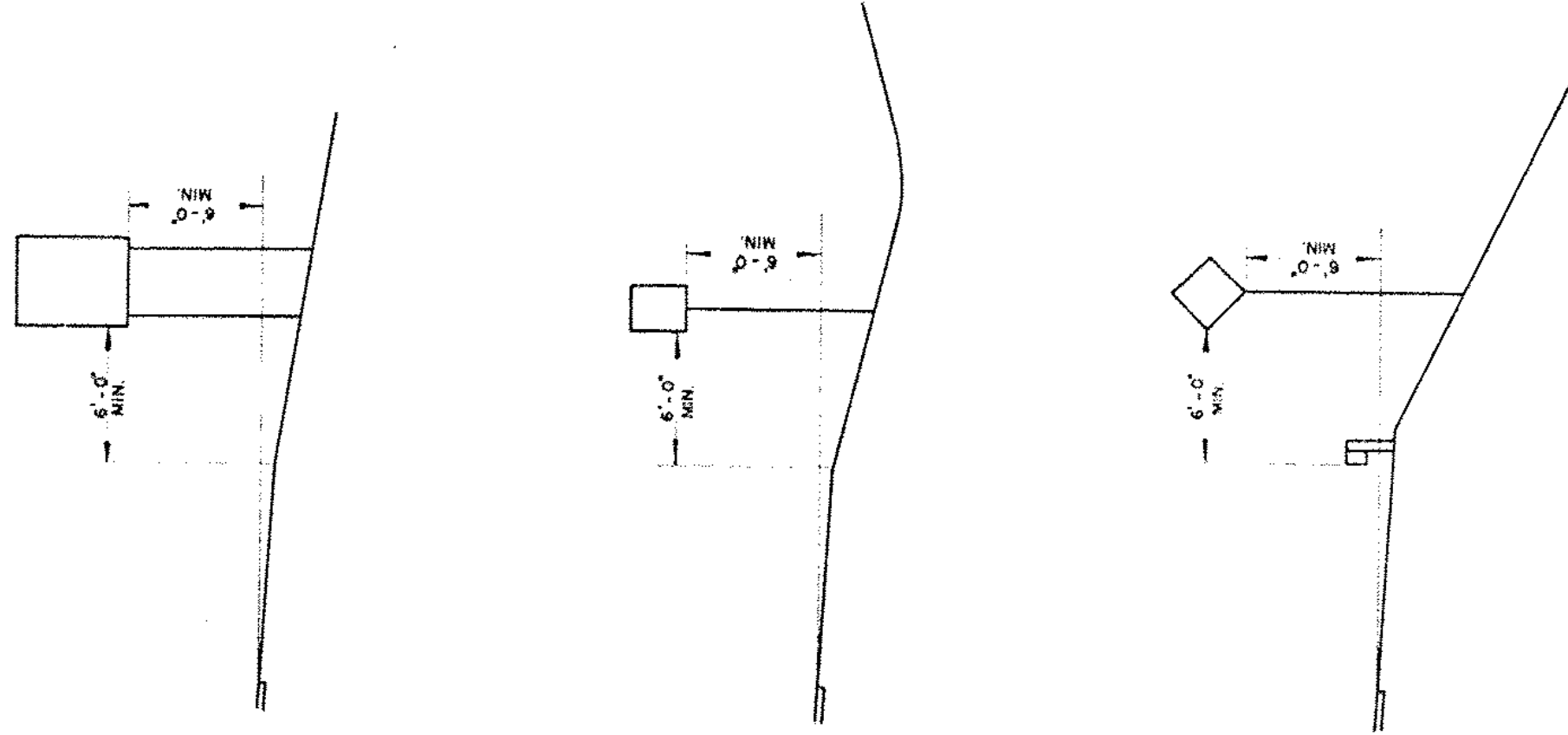


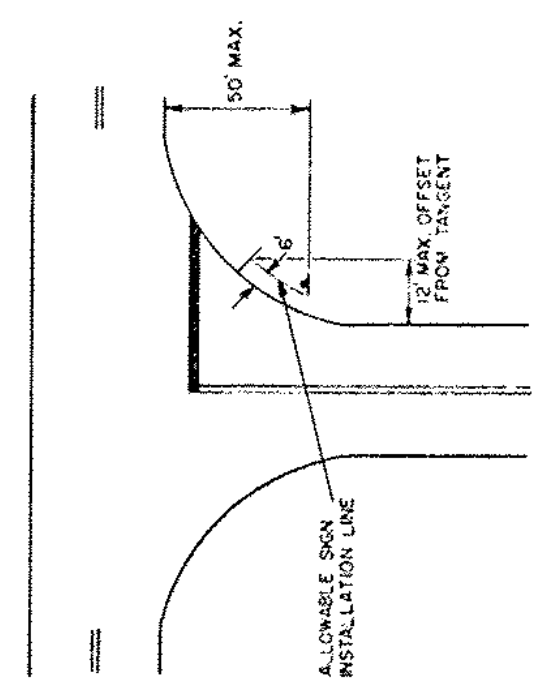
RURAL

URBAN

WARNING SIGNS
ON ISLAND IN THE LINE OF TRAFFIC



STOP OR YIELD SIGNS
AT WIDE THROAT INTERSECTIONS



NOTES 1) IN BOTH RURAL AND URBAN LOCATIONS, IF A SECONDARY SIGN IS MOUNTED BELOW ANOTHER SIGN, THE MINIMUM CLEARANCE MAY BE REDUCED BY ONE
2) IN RURAL AREAS WITH NO SHOULDER, THE MINIMUM LATERAL CLEARANCE SHOULD BE 12' FROM EDGE OF THE TRAVELED WAY.

REVISIONS AND CORRECTIONS
 JUN 24, 1978 - DIMENSION FROM SHOULDER TO SIGN CHANGED
 AUG 25, 1981 - ADDED STOP AND SLAND DETAILS, REVISED CURB OFFSET

APPROVED
 DEC 29, 1971

R. L. Condit
 DISTRICT ENGINEER
E. H. Steehony
 ASST. CHIEF ENGINEER
B. M. Land
 PLANNING CHIEF

STANDARD SIGN PLACEMENT
 CONVENTIONAL ROAD



STANDARD
 E-29