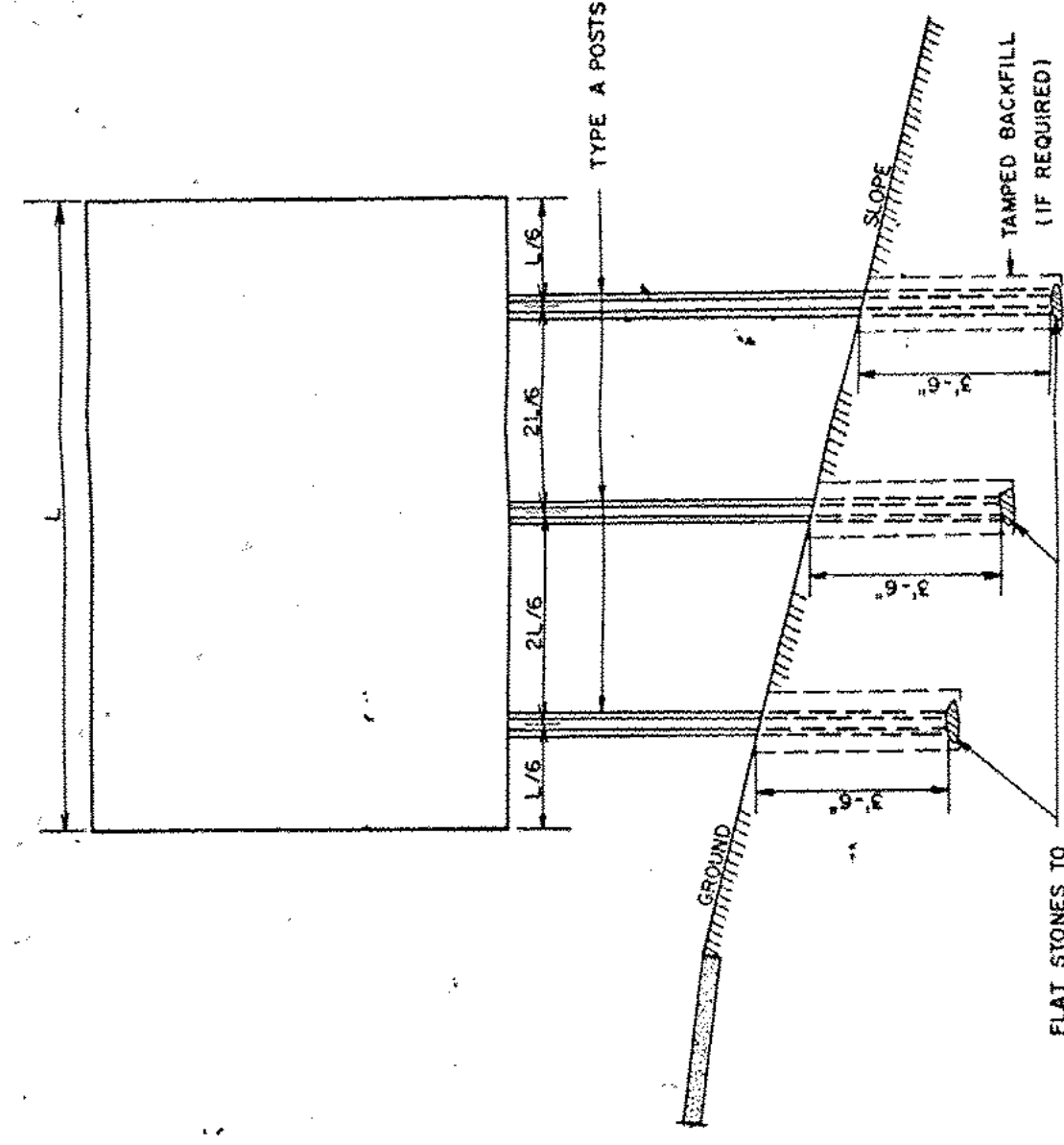


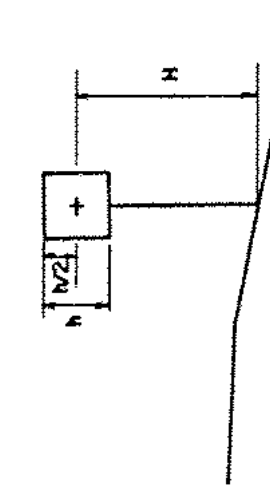
GENERAL NOTES

ALL MATERIAL SHALL BE AS SPECIFIED UNDER SECTION 675 - 575 - TRAFFIC SIGNS

CONSTRUCTION METHODS - POSTS MAY BE DRIVEN OR SET IN A DUG HOLE AND BACKFILLED IF DRIVEN, A DRIVING CAP SHALL BE USED TO DRIVE THE POST INTO THE GROUND AND BACKFILL WILL NOT BE PAID FOR SEPARATELY BUT SHALL BE CONSIDERED AS BEING INCLUDED IN UNIT PRICES FOR OTHER ITEMS IN THE CONTRACT. THE DUG HOLE INSTALLATION SHALL BE USED IN CASES OF POOR SOIL CONDITIONS OR AS DIRECTED BY THE ENGINEER.



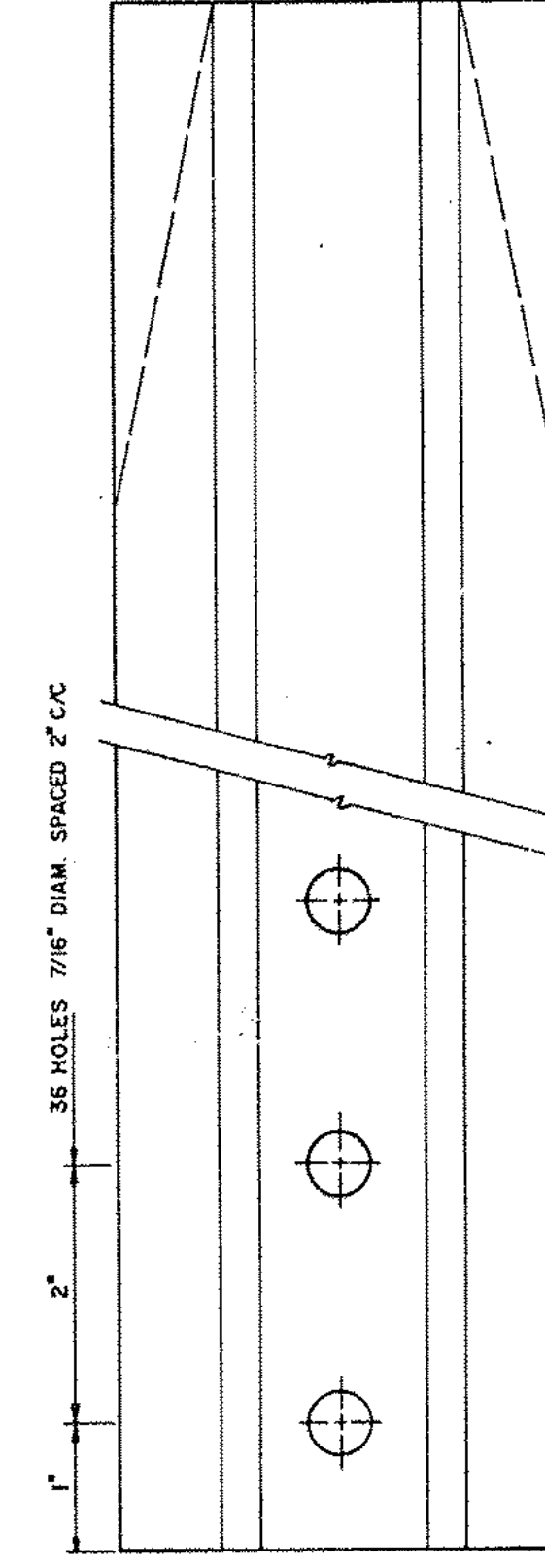
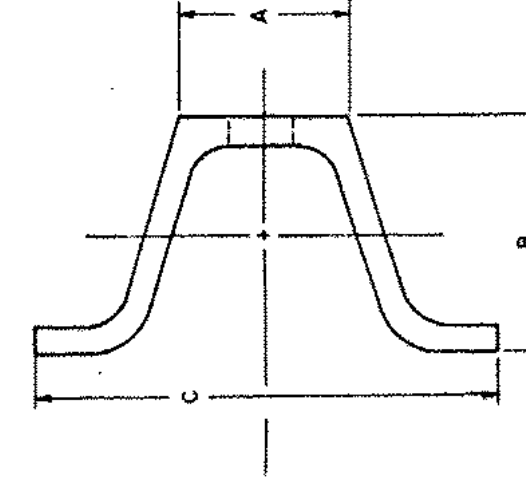
IN AREAS WHERE LEDGE ROCK IS ENCOUNTERED STEEL POSTS WILL BE SET AND GROUTED 12" DEEP IN THE LEDGE.



| POST SELECTION CHART | |
|----------------------|---|
| SKN AREA | (FT ²) x (HFT) x SW (SELECTION VALUE) |
| POST SIZE | SW |
| 2 LB/FT. | 62 |
| 2 1/2 LB/FT. | 77 |
| 3 LB/FT. | 107 |

| POST SIZE PO ADS PER LINEAR FOOT | DIMENSIONS | | | PLASTIC SECTION MODULUS, Z |
|-------------------------------------|------------|----------|---------|-------------------------------|
| | A | B | C | |
| 2 | 1 9/32" | 1 3/64" | 3 1/16" | 0.26 IN ³ |
| 2 1/2 | 1 9/32" | 1 35/64" | 3 1/16" | 0.40 IN ³ |
| 3 | 1 5/16" | 1 7/8" | 3 1/2" | 0.55 IN ³ |

SIMILAR DIMENSIONS ARE ACCEPTABLE, HOWEVER PLASTIC SECTION MODULUS VALUES MUST NOT BE EXCEEDED.



POST MAY BE SQUARE OR TAPERED ON BOTTOM END

YIELDING TYPE FLANGED CHANNEL STEEL SIGN SUPPORTS

STANDARD E 24 - A



APPROVED
DATE: Nov 24, 1976
C. H. Atchley
CHIEF ENGINEER
A. C. Mason
ASST. CHIEF ENGINEER
L. J. Jones
HIGHWAY ENGINEER

REVISIONS AND CORRECTIONS
FEB. 6, 1976 - HEIGHT OF SIGN DELETED
DEC. 15, 1976 - RAIL STEEL DELETED
JAN. 8, 1980 - ADDED POST SIZE & SELECTION CHARTS;
REVISED NOTES & DIMENSIONS