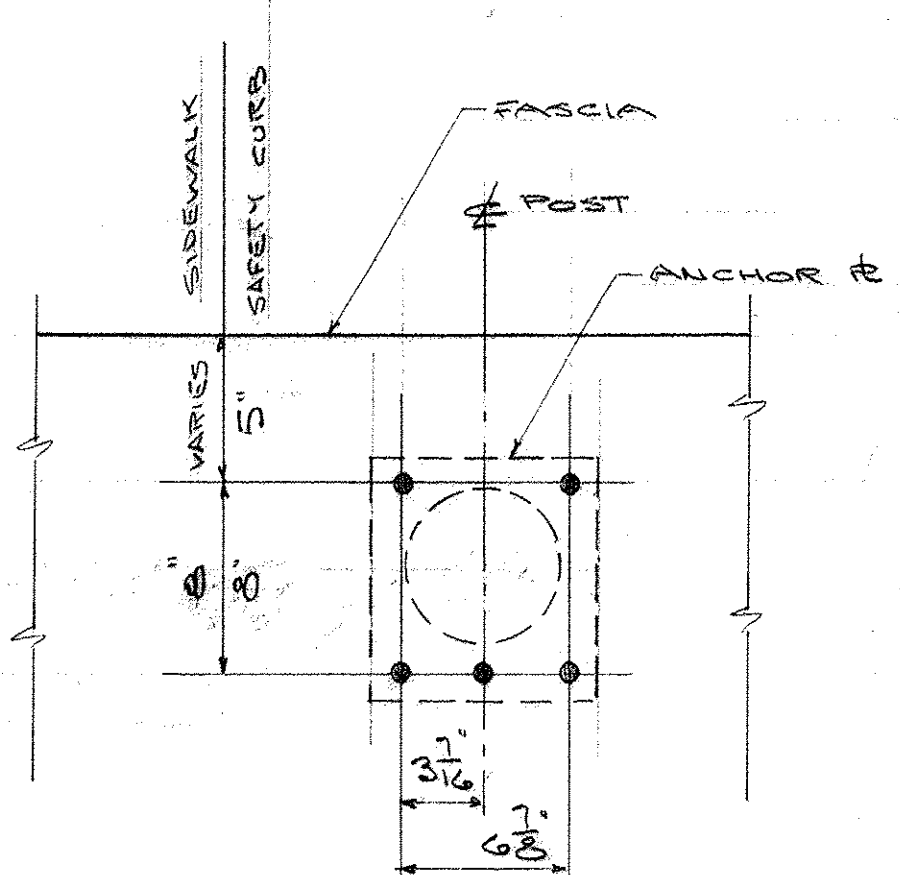
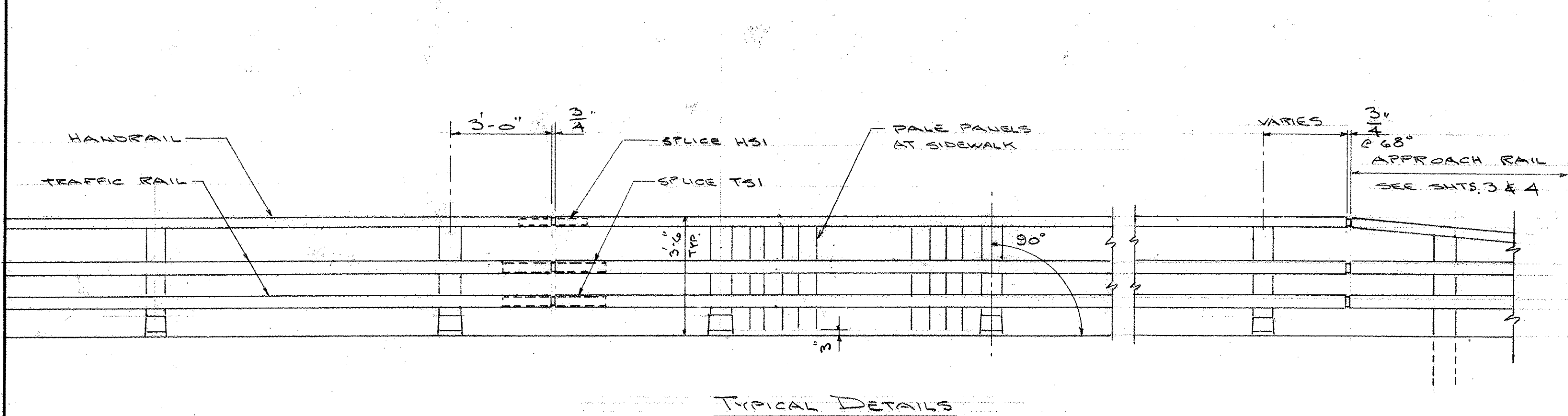
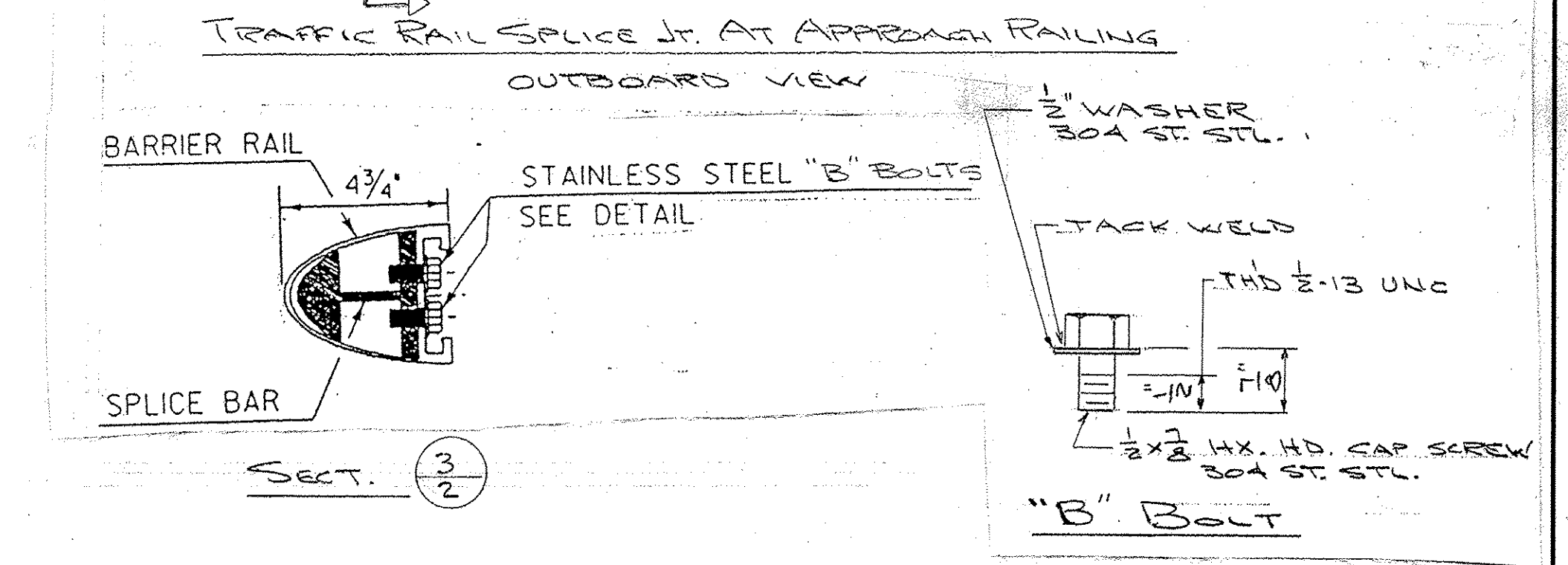
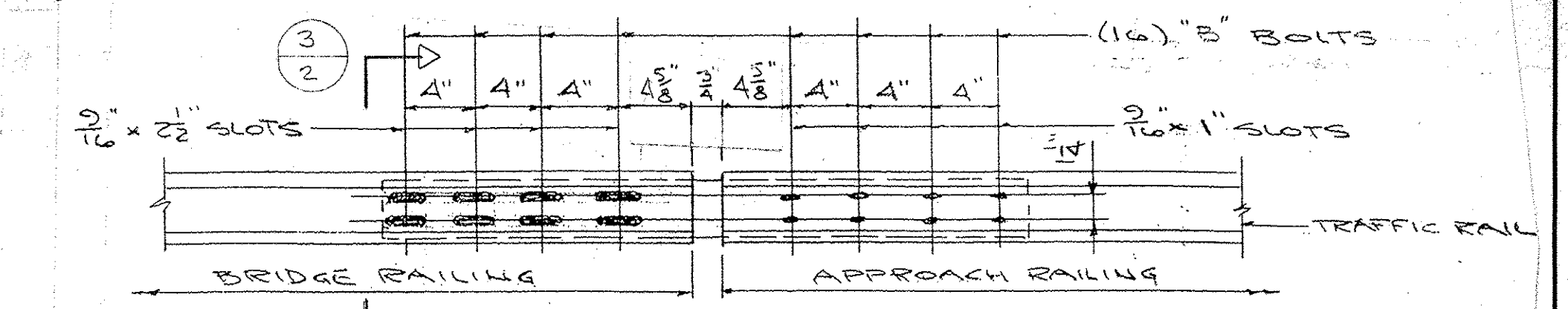
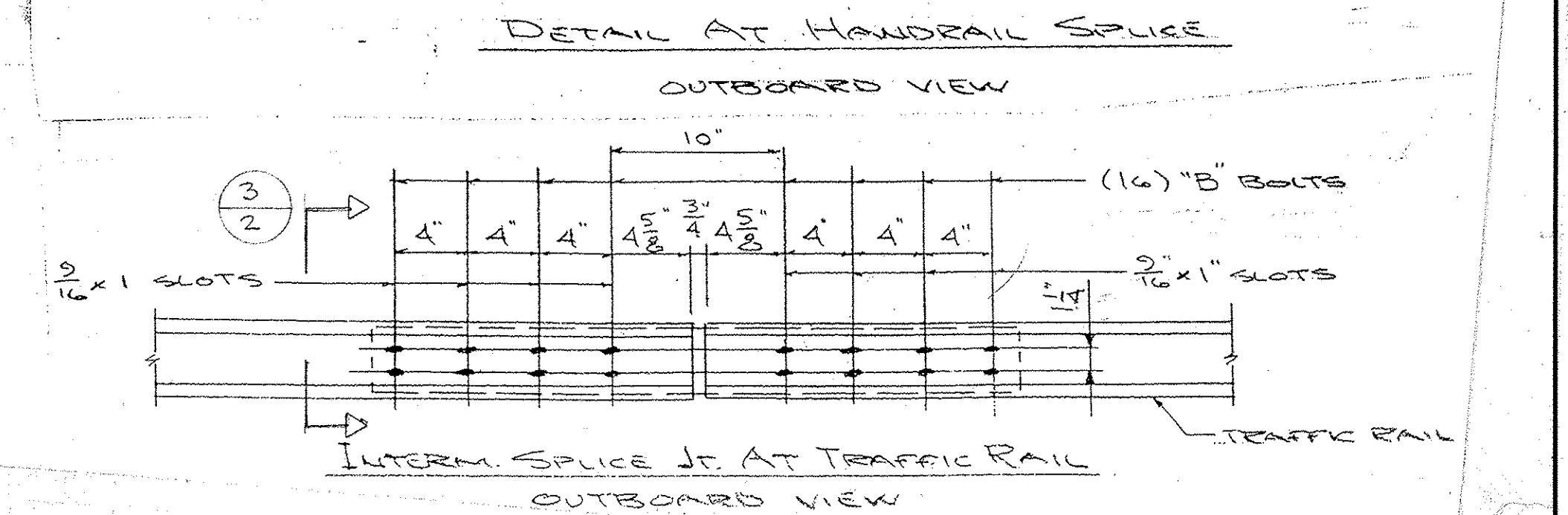
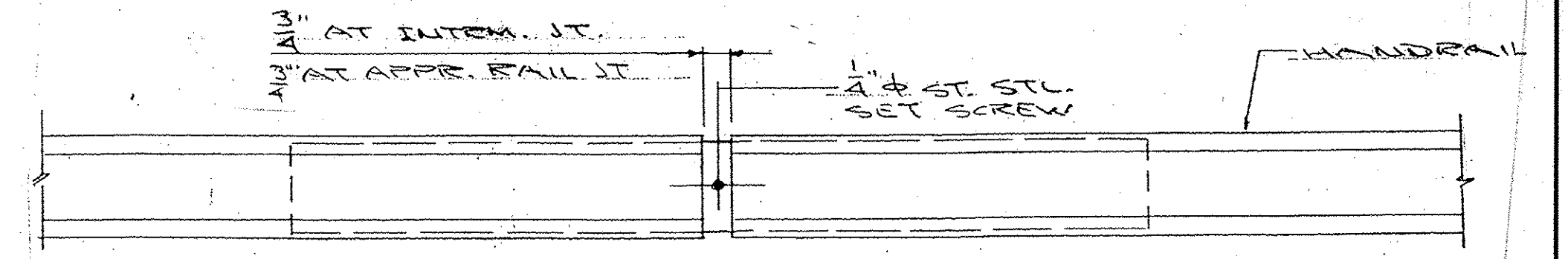
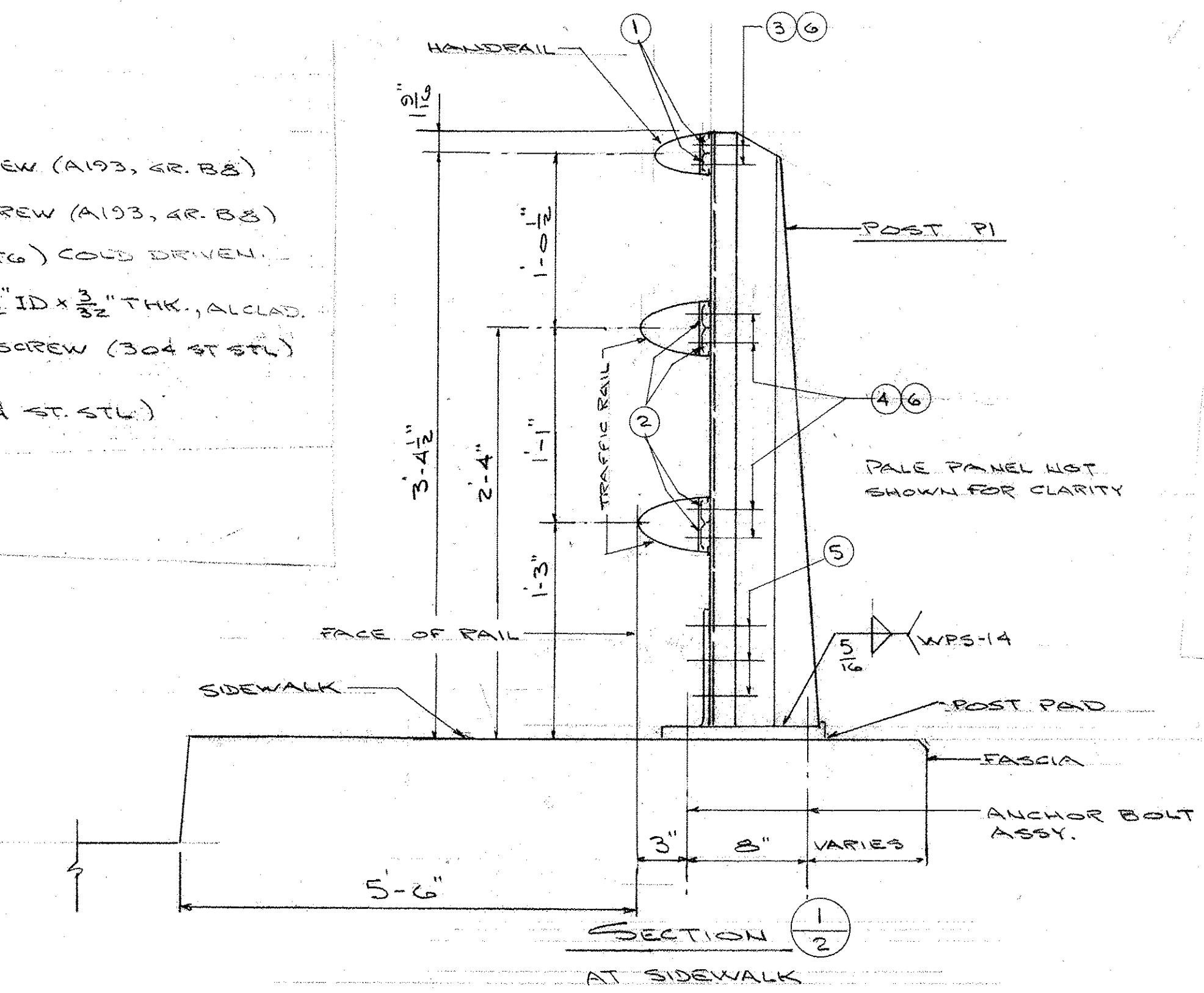


- ① #4 CLAMP BAR
- ② #1 CLAMP BAR
- ③ 1/2"-13 x 3/4" HEX HD CAP SCREW (A193, GR. B8)
- ④ 1/2"-13 x 1" HEX HD CAP SCREW (A193, GR. B8)
- ⑤ 1/2" AL. RIVET (6061-T6) COLD DRIVEN
- ⑥ AL. WASHER 1 1/16" OD x 1 1/16" ID x 3/32" THK., ALCLAD.
- ⑦ 1/2"-13 x 1 1/2" HEX HD CAP SCREW (304 ST. STL.) 75,000 TENSILE
- ⑧ 1/2"-13 HEX NUT (304 ST. STL.) 75,000 TENSILE



RECEIVED CHK'D BY: <i>URS</i> OK'D BY: <i>mm</i> JUN 03 2009 RESIDENT: _____ APPROVED: <input checked="" type="checkbox"/> BY: _____ DATE: 6-19-09		<b>AUCIELLO IRON WORKS INC</b> 560 MAIN ST. HUDSON, MA (978) 568-8382 VT. AGENCY OF TRANSPORTATION WILLIAMSTOWN #BRS 0204 (4) ROUTE 64 OVER BROOK ALUMINUM RAILING SURFACE PREP: NONE FINISH: MILL FINISH FOR: P.E. LAFALETTE, INC. DR. WM. D. 12-10-09 DWG. NO. CHK. <i>mm</i> 1-22-09 <b>BR-2950</b> JOB NO. 1001-1001 SHEET 2 OF 3 ISSUE DATE DESCRIPTION BY: A091005-1001	
--	--	--	--