

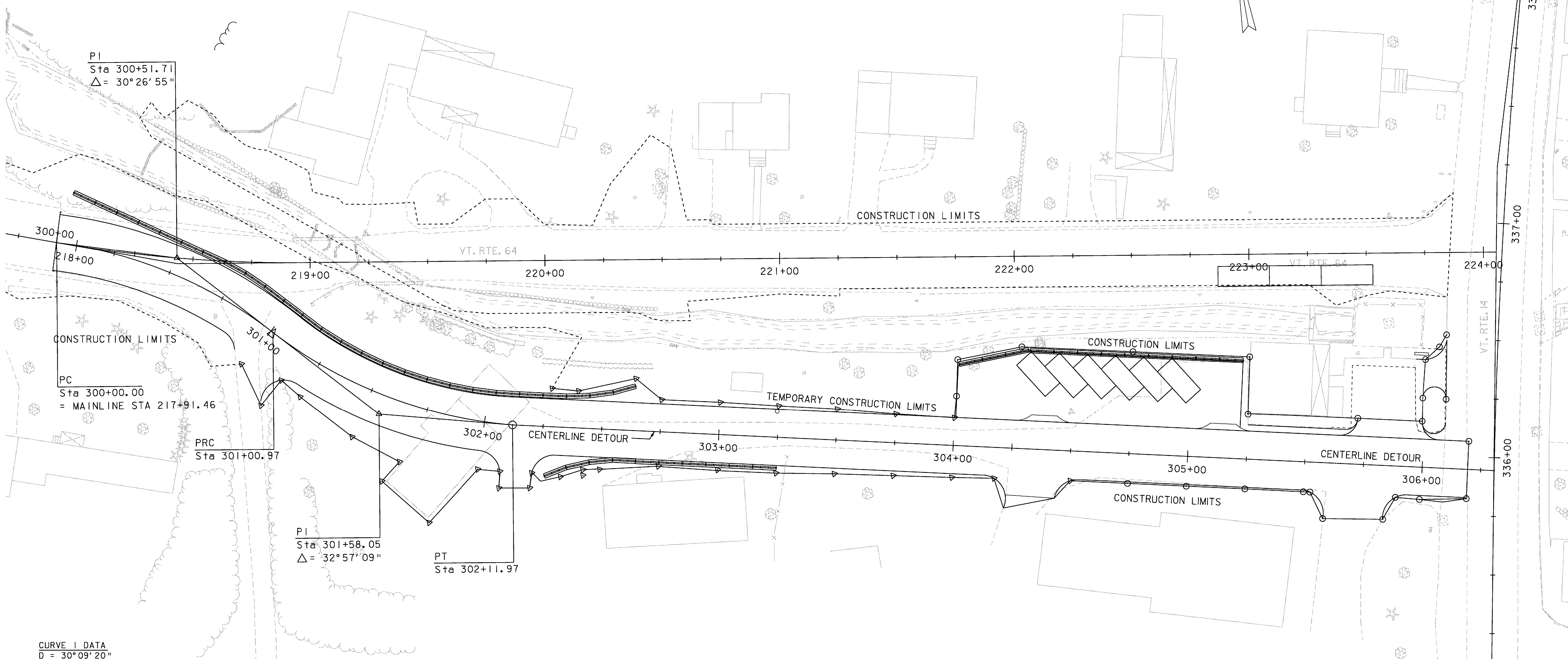
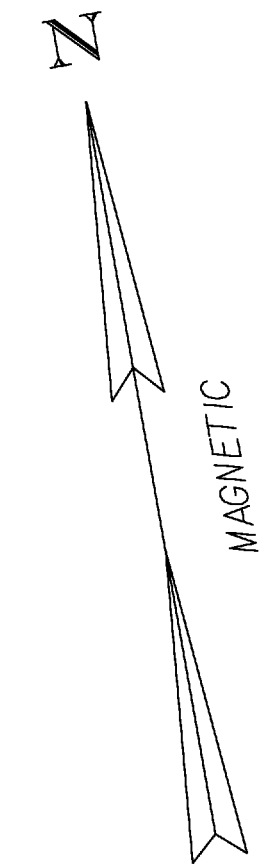
TEMPORARY PAVEMENT MARKINGS SHALL BE PROVIDED FOR THE TEMPORARY ROADWAY, RANDOLPH NATIONAL BANK PARKING LOT, AND THE TEMPORARY EMPLOYEE PARKING FOR THE RANDOLPH NATIONAL BANK. THIS WORK SHALL BE INCIDENTAL TO ITEM 900.645 SPECIAL PROVISION (TEMPORARY ROADWAY) SEE SHEET 23 FOR ADDITIONAL DETAILS

TEMPORARY TRAFFIC BARRIER  
 STA. 300+00 LT. - 302+64 LT.  
 STA. 302+26 RT. - 303+25 RT.

SPECIAL PROVISION  
 (PEDESTRIAN HAND RAILING)  
 STA. 305+25 LT. TO 305+65 LT.

CONCRETE MEDIAN BARRIER  
 STA. 304+01 LT. - 305+22 LT.

CONSTRUCT PAVED DRAINAGE DITCH  
 305+23 LT. 19.5' - 305+23 LT. 38.5'



PI  
 Sta 300+51.71  
 $\Delta = 30^\circ 26' 55''$

PC  
 Sta 300+00.00  
 = MAINLINE STA 217+91.46

PRC  
 Sta 301+00.97

PI  
 Sta 301+58.05  
 $\Delta = 32^\circ 57' 09''$

PT  
 Sta 302+11.97

CURVE 1 DATA  
 $D = 30^\circ 09' 20''$   
 $R = 190.00'$   
 $T = 51.71'$   
 $L = 100.97'$   
 $E = 6.91'$   
 $e = N/C$

CURVE 2 DATA  
 $D = 24^\circ 41' 13''$  LT  $29^\circ 41' 13''$   
 $R = 193.00'$   
 $T = 57.08'$   
 $L = 111.00'$   
 $E = 8.26'$   
 $e = N/C$



### DETOUR LAYOUT SHEET

PROJECT NAME: WILLIAMSTOWN  
 PROJECT NUMBER: BRS 0204(4)

FILE NAME: 83ell/structures/sellldr.dgn	PLOT DATE: 07-APR-2008
PROJECT LEADER: M. EVANS-MONGEON	DRAWN BY: U. STANLEY
DESIGNED BY: U. STANLEY	CHECKED BY: EVANS-MONGEON
IPRAM NAME: s83ellldr	SHEET 22 OF 108