

REMOVAL AND DISPOSAL OF GUARD RAIL  
 219+00 RT TO 219+19 RT

RELOCATE MAILBOX, SINGLE SUPPORT  
 220+02 LT

CONSTRUCT DRIVE  
 217+59 LT. (13' GRAVEL)  
 217+55 RT (13' PAVED)  
 218+74 RT. (12' GRAVEL) PAVED  
 219+34 LT. (15' GRAVEL)  
 219+81 LT. (14' GRAVEL)  
 220+60 LT. (19' PAVED)

REMOVE AND RESET FENCE  
 220+52 LT. 22' TO 220+52 LT. 36'

ANCHOR FOR STEEL BEAM RAIL  
 75' 217+70 LT. (G1-D)  
 218+88 RT. (G1-D)

Drainage Notes  
 #1 Sta. 218+49.24' RT to Sta 219+46, 27' RT 35'  
 New 18" Pipe, 100' Long, CPEP OR CAAP OR CSP WITH I-45° ELBOW  
 Inv. In 876.80  
 Inv. Out 874.00  
 #2 Sta. 220+45, 25' LT 23'  
 New Precast Reinforced Concrete Pipe DI With Cast Iron Grate  
 Sta 220+45, 25' LT to Sta 220+55, 24' 25' RT 22'  
 New 18" Pipe, 50' Long, CPEP OR CAAP OR CSP  
 Inv. In 868.14 867.93  
 Inv. Out 864.90 866.00  
 #4 Sta. 220+48.5, LT  
 Remove Drop Inlet

TRANSPLANTING SHRUBS  
 220+52 LT.

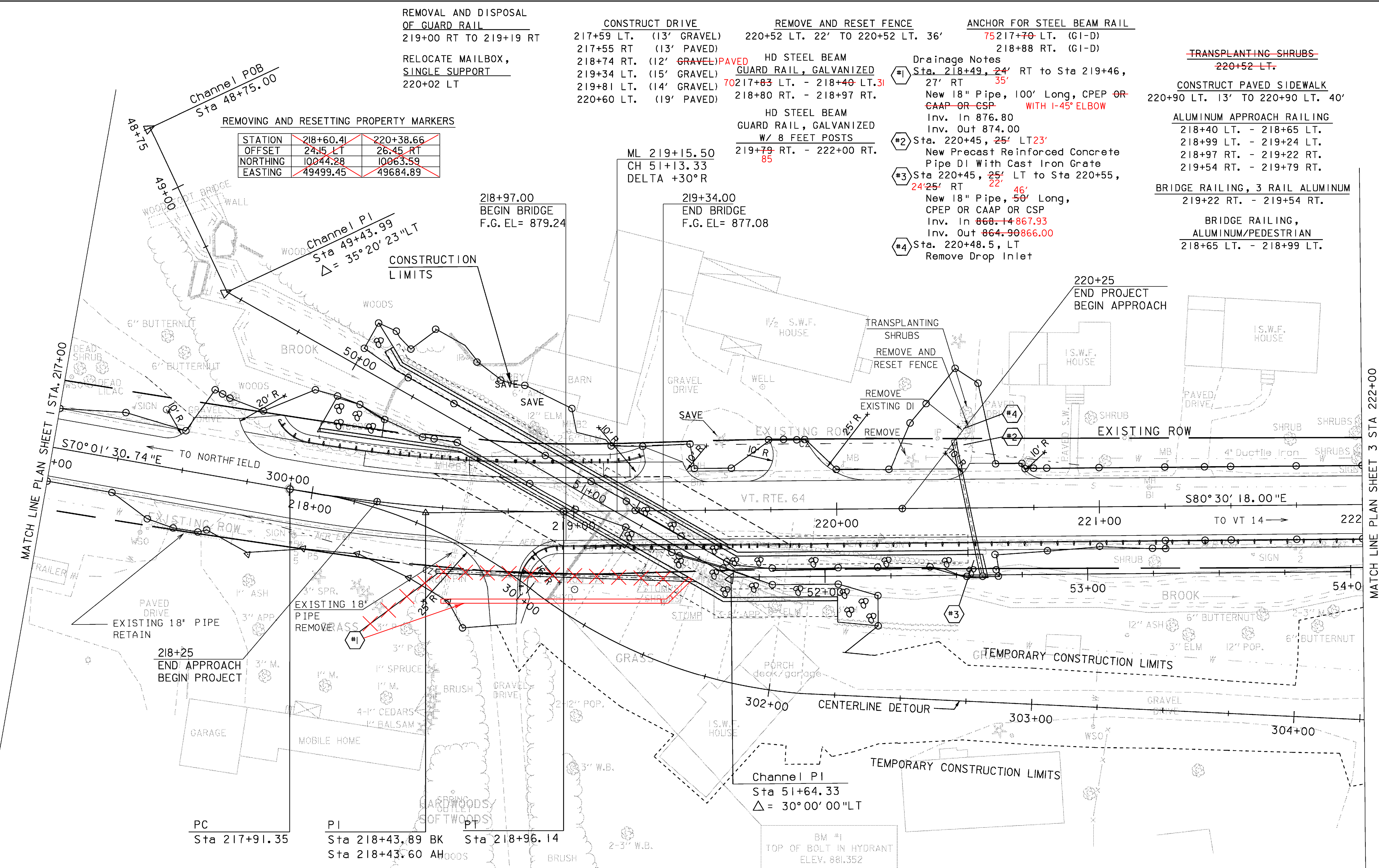
CONSTRUCT PAVED SIDEWALK  
 220+90 LT. 13' TO 220+90 LT. 40'

ALUMINUM APPROACH RAILING  
 218+40 LT. - 218+65 LT.  
 218+99 LT. - 219+24 LT.  
 218+97 RT. - 219+22 RT.  
 219+54 RT. - 219+79 RT.

BRIDGE RAILING, 3 RAIL ALUMINUM  
 219+22 RT. - 219+54 RT.

BRIDGE RAILING, ALUMINUM/PEDESTRIAN  
 218+65 LT. - 218+99 LT.

STATION	218+60.41	220+38.66
OFFSET	24.15 LT	26.45 RT
NORTHING	10044.28	10063.59
EASTING	49499.45	49684.89



EXISTING BRIDGE DATA  
 CONCRETE SLAB  
 YEAR BUILT: 1900  
 CLEAR SPAN: 12'  
 VERTICAL CLEARANCE: 7'  
 WATERWAY OF FULL OPENING: 95 SQ FT

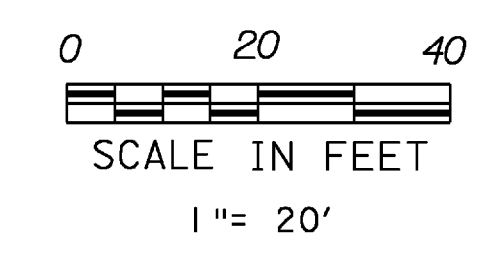
CURVE 2 DATA  
 D = 10°00'00" LT  
 R = 572.96'  
 T = 52.55'  
 L = 104.80'  
 E = 2.40'  
 e = N/C  
 Δ = 10°28'47"

DEMOLITION AND DISPOSAL OF BUILDING  
 219+50 RT.

PORTLAND CEMENT CONCRETE SIDEWALK, 5 INCH  
 218+11 218+18 - 218+68 LT 218+70  
 219+05 - 219+22 LT  
 02 25  
 222+45 LT

CAST-IN-PLACE CONCRETE CURB, TYPE B  
 218+14 218+18 - 218+43 LT 218+73.5  
 219+10 218+97 - 219+22 LT  
 219+04 - 219+19 RT

DATUM  
 VERTICAL NGVD 1929  
 HORIZONTAL ASSUMED



PLAN SHEET 2

PROJECT: WILLIAMSTOWN	PROJECT NO.: BRS 0204(4)
DESIGN FILE NAME: projects/83ell/structures/sellbdr.dgn	PLOT DATE: 07-APR-2008
IPARM FILE NAME: sellpl2.1	SURVEY DATE: 9/89
SURVEYED BY: GILMAN	DRAWN BY: U. STANLEY
SQUAD LEADER: M. EVANS-MONGEON	SHEET: 18 OF 108