

REMOVAL AND DISPOSAL OF EXISTING GUARD RAIL
 Lt
 14+72 ~ 22+09

GUARD RAIL, STANDARD STEEL BEAM WITH WOOD POSTS, TYPE II
 Lt
 13+58 ~ 22+62.5

BREAKAWAY CABLE TERMINAL FOR GUARD RAIL, STEEL BEAM w/ WOOD POSTS, TYPE II
 Lt
 22+62.5 ~ 22+67.5

TEMPORARY BARRIER RAIL WILL BE INSTALLED AS DIRECTED BY THE ENGINEER

CONSTRUCT SHEAR KEY
 Lt
 15+50 ~ 20+00

STRUCTURE EXCAVATION
 Lt
 14+75 ~ 20+00

ROCK BORROW
 Lt
 14+75 ~ 20+00

GRAVEL BACKFILL FOR SLOPE STABILIZATION
 Rt
 15+25 ~ 20+50

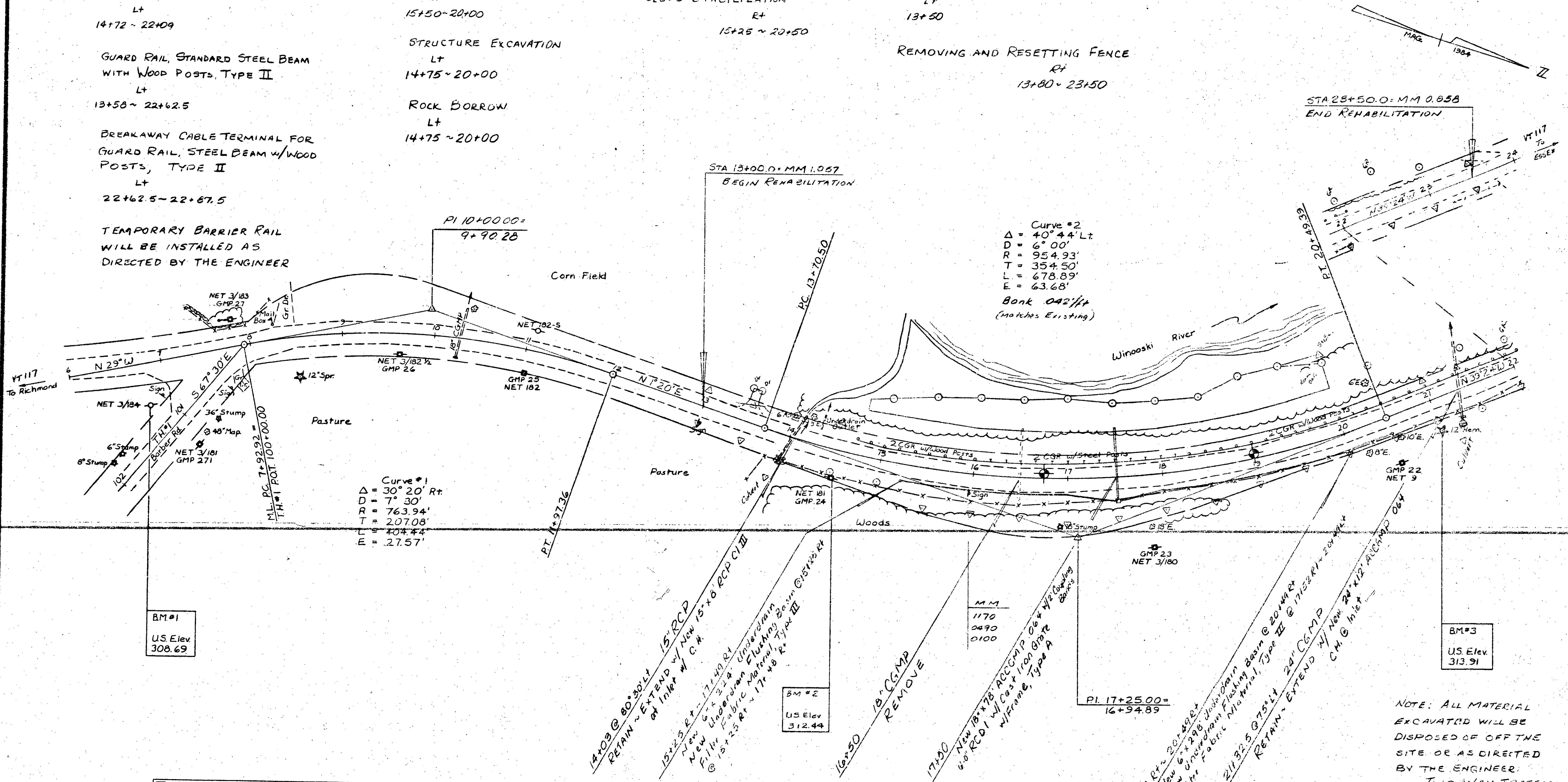
CONSTRUCT FIELD DRIVE
 Lt
 13+50
 REMOVING AND RESETTING FENCE
 Rt
 13+80 ~ 23+50

STA 25+50.0 = MM 0.858
 END REHABILITATION

STA 13+00.0 = MM 1.057
 BEGIN REHABILITATION

Curve #2
 $\Delta = 40^\circ 44' Lt$
 $D = 6^\circ 00'$
 $R = 954.93'$
 $T = 354.50'$
 $L = 678.89'$
 $E = 63.68'$
 Bank 0.42'/ft
 (Marshes Existing)

Curve #1
 $\Delta = 30^\circ 20' Rt$
 $D = 7^\circ 30'$
 $R = 763.94'$
 $T = 207.08'$
 $L = 404.44'$
 $E = 27.57'$



BM #1
 US Elev.
 308.69

BM #2
 US Elev.
 312.44

BM #3
 US Elev.
 313.91

14+09 @ 80°30' Lt 15" RCP
 RETAIN ~ EXTEND w/ New 15" x 6' RCP (C.I.)
 at Inlet w/ C.H.

15+25 Rt ~ 17+40 Rt
 New Underdrain Flushing Basin @ 15' x 24'
 Filter Fabric Material, Type II
 @ 15' x 25' Rt ~ 17' x 48' Rt

16+50 18" CGMP REMOVE
 17+00
 New 18" x 18" ACCOMP 0.6 x 1/2" Colored
 6" RCP w/ Cast Iron Gate
 w/ frame, Type A

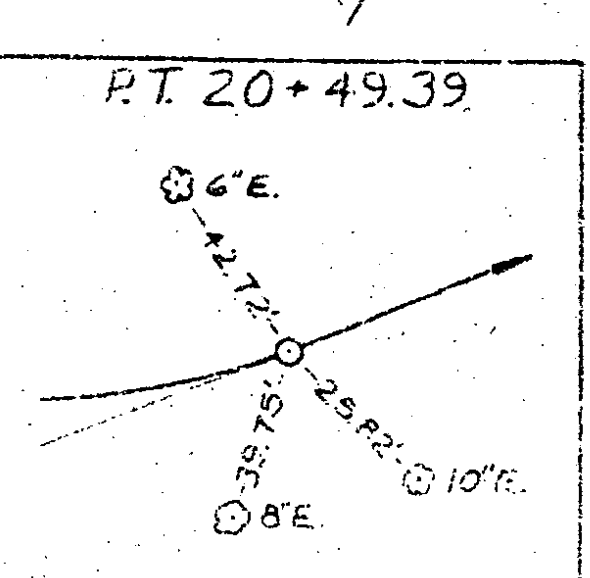
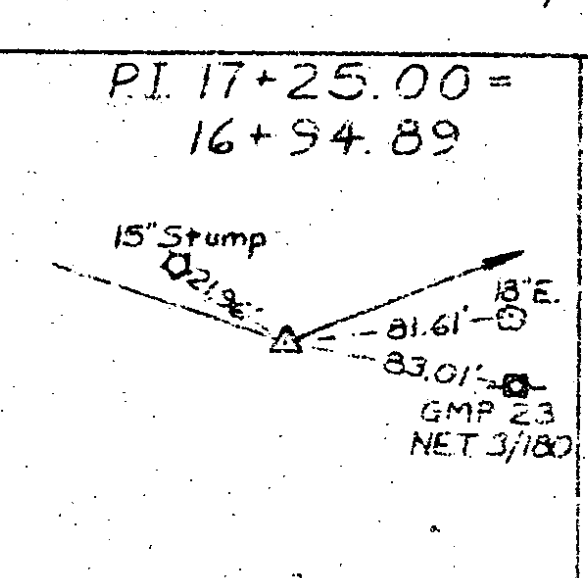
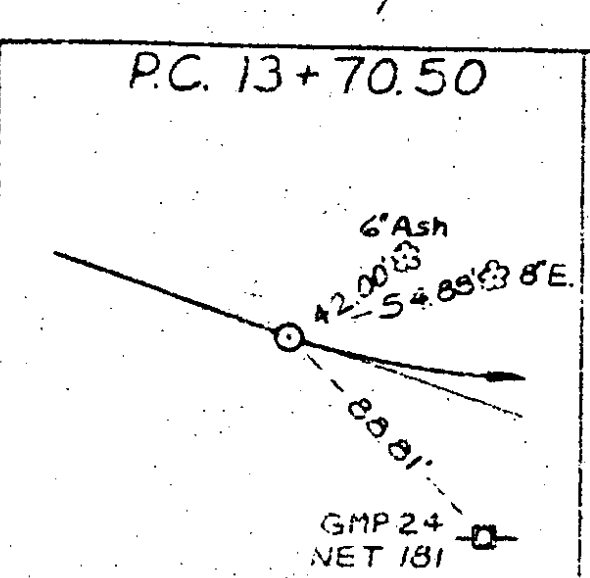
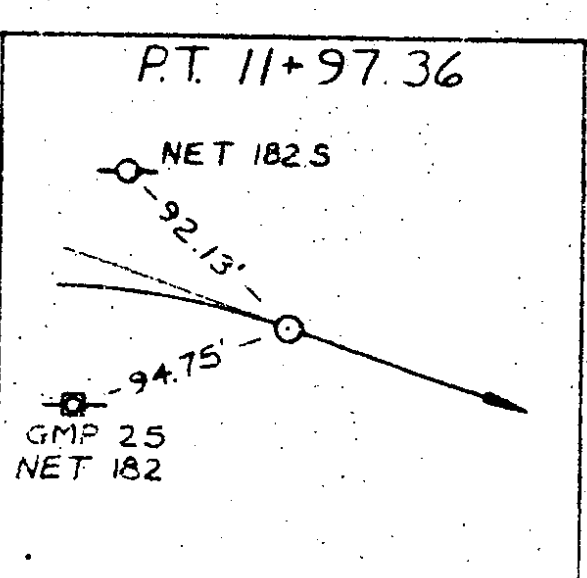
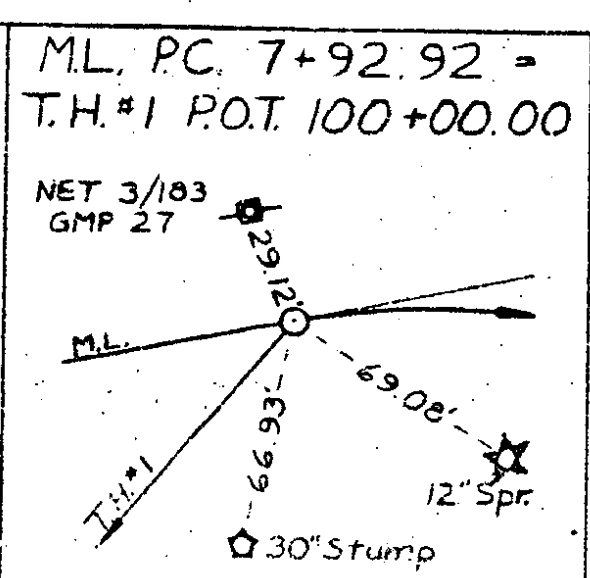
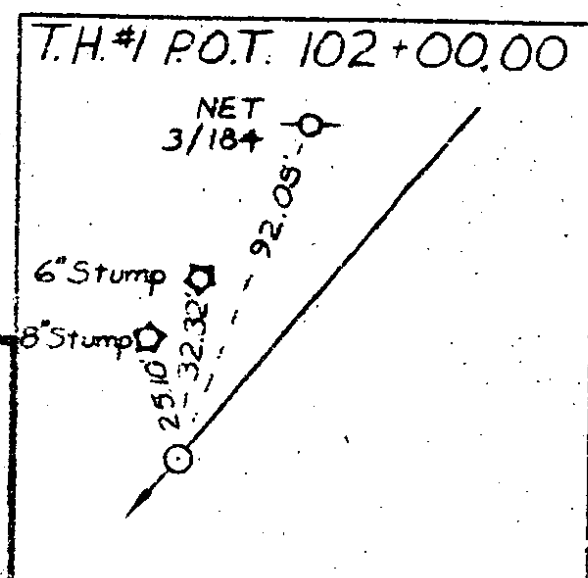
MM
 1170
 0490
 0100

PI 17+25.00 =
 16+94.89

17+51 Rt ~ 20+49 Rt
 New Underdrain Flushing Basin @ 20' x 24'
 Filter Fabric Material, Type II @ 17' x 24' Rt
 RETAIN ~ EXTEND w/ New 24" x 12" RCP
 C.H. @ Inlet

NOTE: ALL MATERIAL EXCAVATED WILL BE DISPOSED OF OFF THE SITE OR AS DIRECTED BY THE ENGINEER.
 TWO WAY TRAFFIC WILL BE MAINTAINED DURING HOURS OF DARKNESS

PAVING NOTE:
 ESTIMATE FOR THIS SECTION (MM 0.858 ~ MM 1.057) INCLUDES
 BASE COURSE & BINDER
 WEAR COURSE & GRAVEL SHOULDERS
 ARE ESTIMATED IN PAVING SECTION



DATUM
 VERTICAL NGVD 1929
 HORIZONTAL N/A

SURVEYED BY Beard DATE 1/84
 DRAWN BY Kastner DATE 1/84
 TRACED BY Kastner DATE 1/84
 PROJ. HC RS 0224(3)
 SHEET 22 OF 60