

HES 017-1012

LT	RT
-11.5 284.7	19 284.7
-19 284.8	12.5 284.8
-19 284.7	12.5 284.7
-16.5 284.7	19 284.0
-11.5 284.7	19 284.0
0 285.3	
3 285.3	
3 284.9	
0 284.8	

HES 017-112

LT	RT
-11.5 285	19 284.7
-18 284.9	12 284.9
-18 284.9	12 284.5
-11.5 284.1	19 284.0

FORM-112

FORM-112	ROADWAY CHECK
12	282.8
0	281.8
12	283.2
12	281.8
0	281.2
12	284.5

584 FORM-102

584 FORM-102	FORM-102
58	RT
67	LT
67	RT
58	LT

REV 553+60 & 553+63 LT  
 RELOCATE MAILBOXES - Multiple Support (Single Post w/ Two Boxes)  
 Mailboxes shall be relocated as far to the north as possible within the island to improve corner sight distance. The final location shall be determined by the Engineer and Property owner.

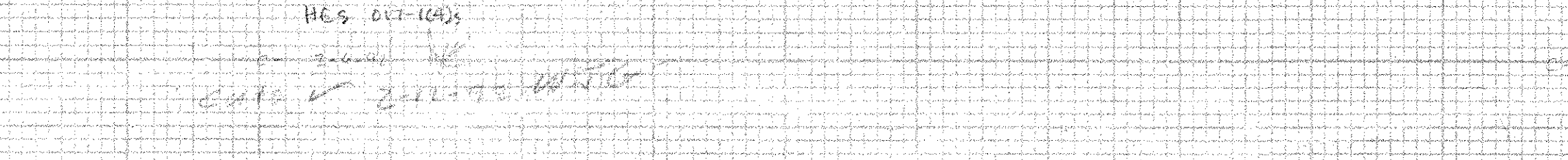
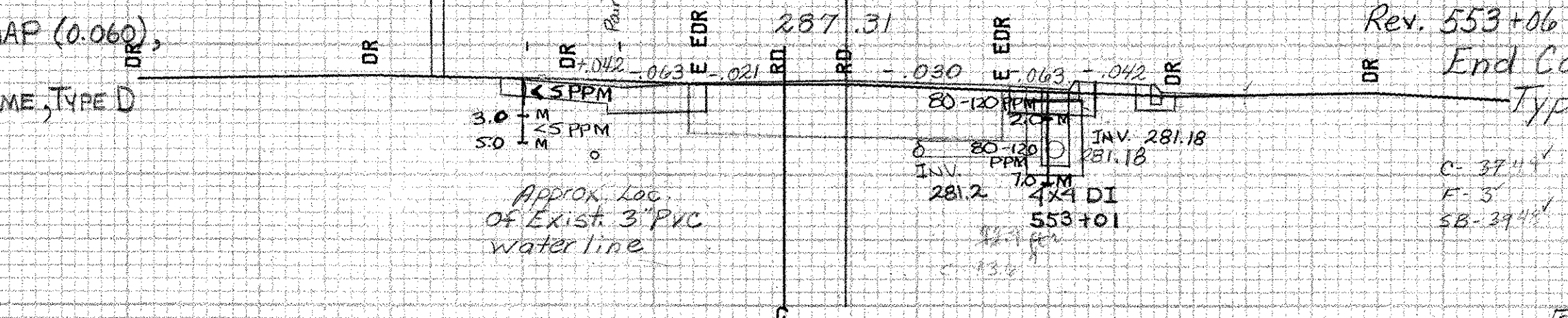
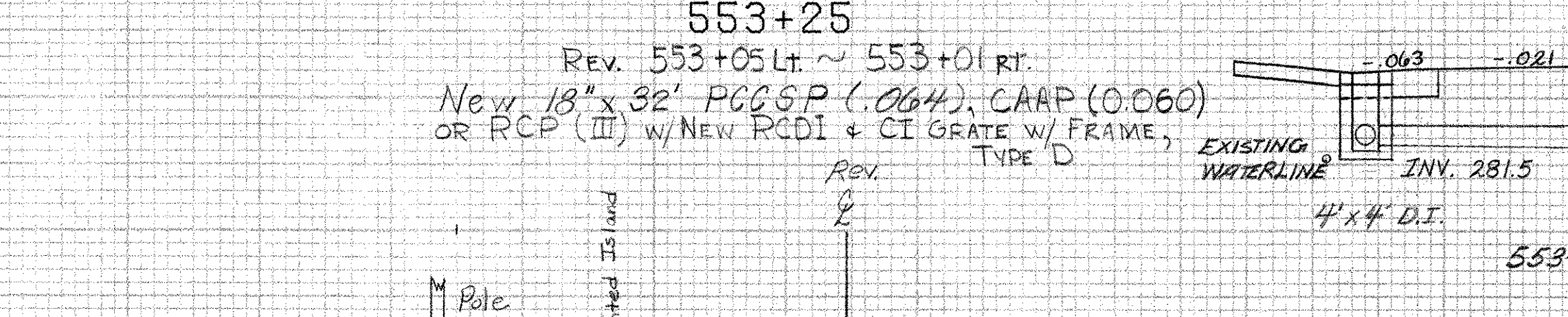
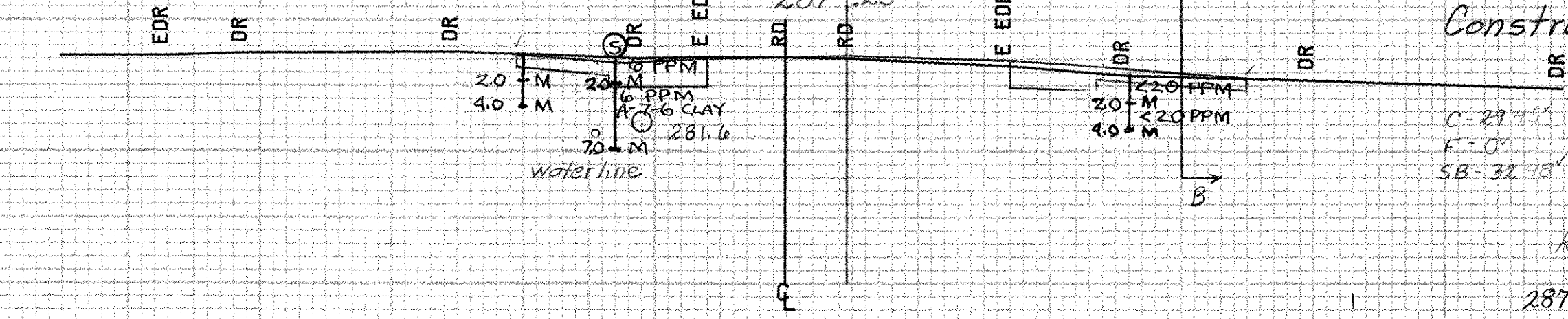
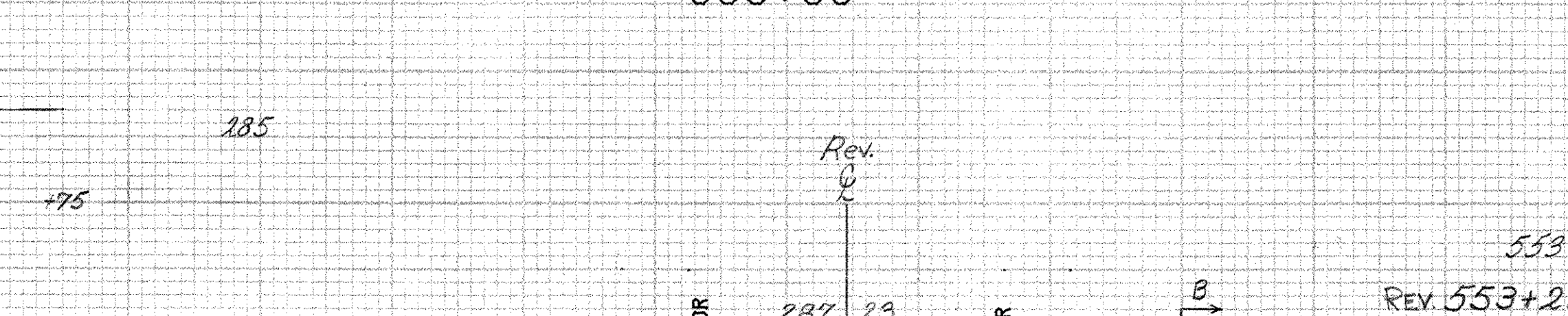
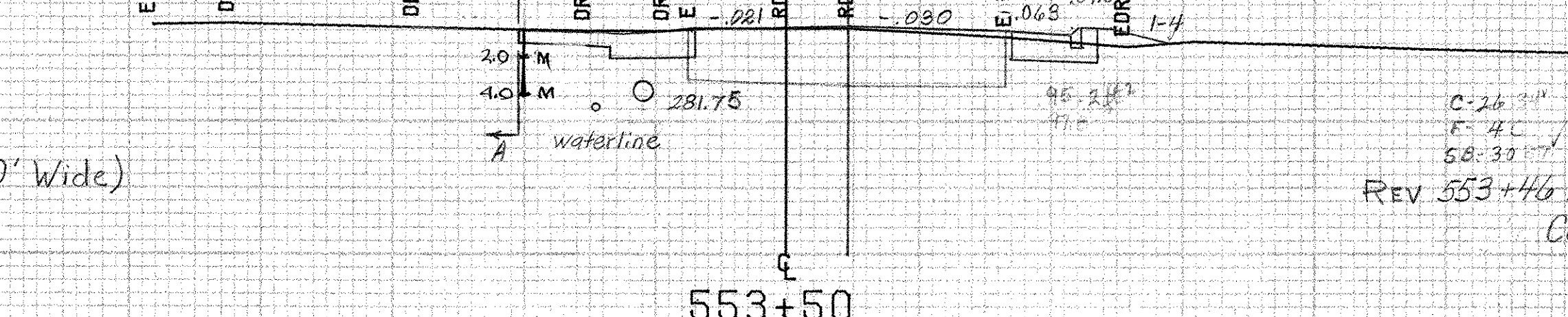
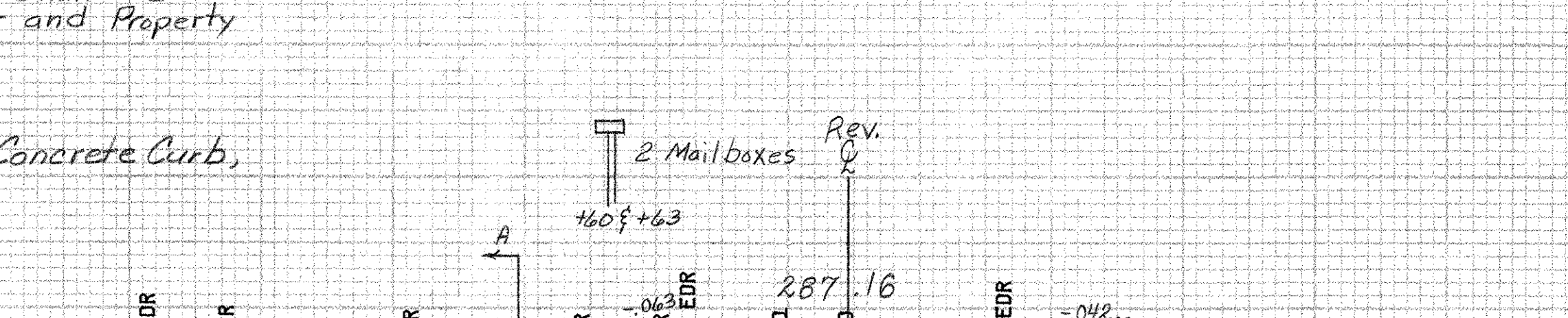
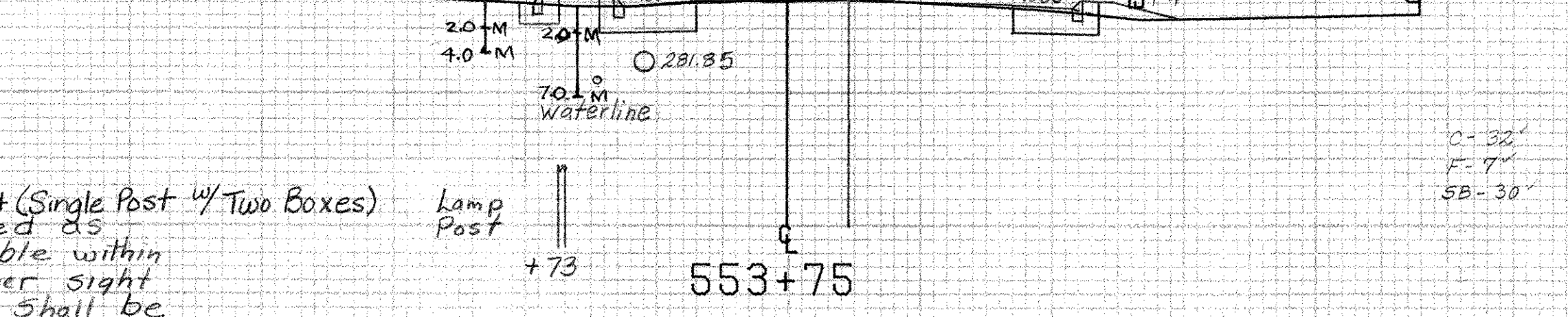
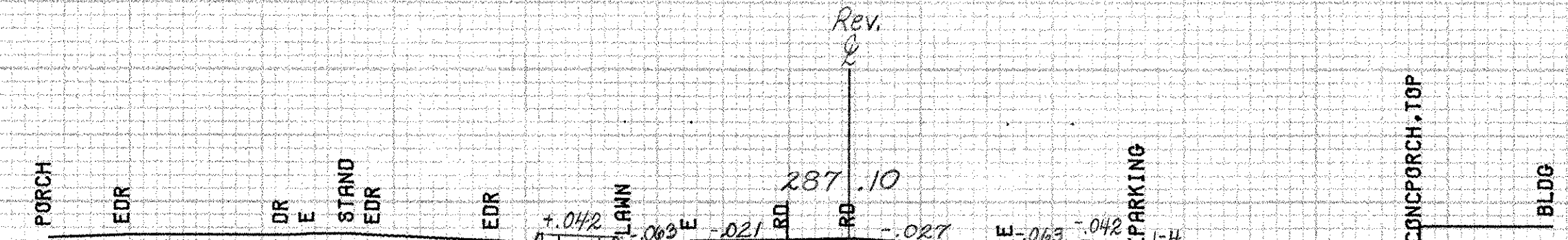
REV 553+58 LT  
 Begin Cast-in-Place Cement Concrete Curb, Type A (Island)

REV 553+40 LT  
 Construct Drive (Gravel) (40' Wide)

Section A-A

REV 553+05 LT ~ 554+04 LT  
 New 18" x 98' PCCSP (.064), CAAP (0.060), or RCP, Class III Option w/ NEW RCDI & CI GRATE w/ FRAME, TYPE D

REV 552+99 LT ~ 553+18 LT  
 Durable 12" Yellow Lines (Painted Island)



280

280

280

280

285

280

284

FORM-102

SCALE 10 FEET

SHEET 471 OF 477  
 FROM STA. 553+00 TO STA. 553+75  
 PROJECT NAME ADDISON VT22A  
 NO. HES017-1(4)S PLOTTED 11/29/84  
 SURVEYED BY FANTONI SEPT 1984  
 SHEET 41 OF 47 SHEETS