

Durable 24" Stop Bar  
 VT 17 West 10+19 Lt ✓  
 VT 17 East 10+04 Lt ✓  
 M 549+83 ~ 550+03 27' RT ✓

Temporary 4" White Line  
 M 549+50 Lt ~ M 550+83 Lt ✓  
 M 550+10 Rt ~ M 550+93 Rt ✓  
 M 552+14 Lt ~ M 554+98 Lt ✓  
 M 552+36 Rt ~ M 555+00 Rt ✓

Painted Curb\*  
 VT 17 East 10+50 Lt ~ M 552+33 Rt ✓  
 M 552+74 Rt ~ 553+06 Rt (Island) ✓  
 M 553+46 Rt ~ 553+75 Rt ✓  
 M 553+58 Lt ~ 554+07 Lt (Island) ✓

Durable Letter in Word Markings  
 VT 17 West 10+28 Lt (STOP) Stop Ahead  
 VT 17 East 10+13 Lt (STOP) Stop Ahead  
 M 549+85 ~ 549+92 36' RT (STOP) ✓

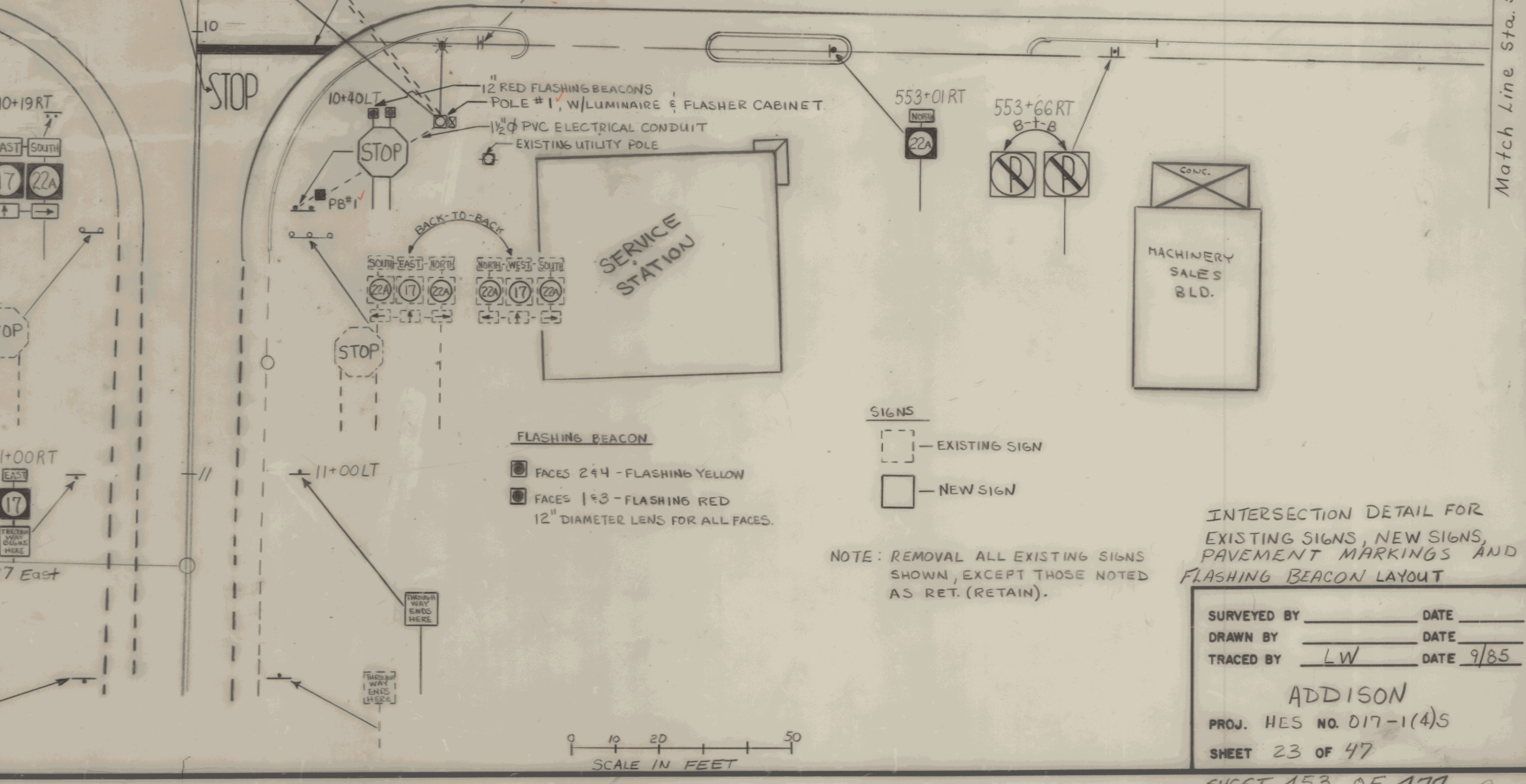
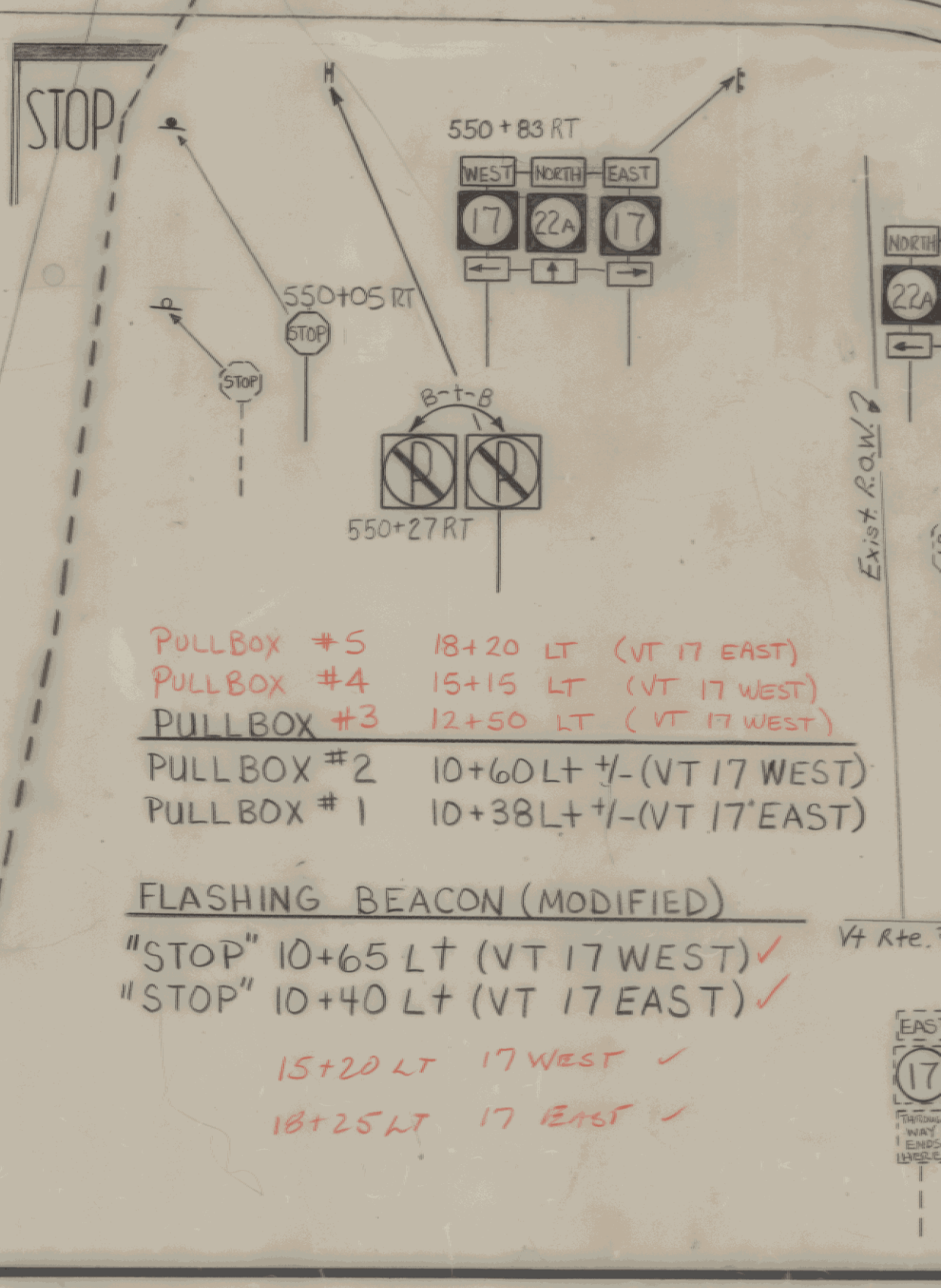
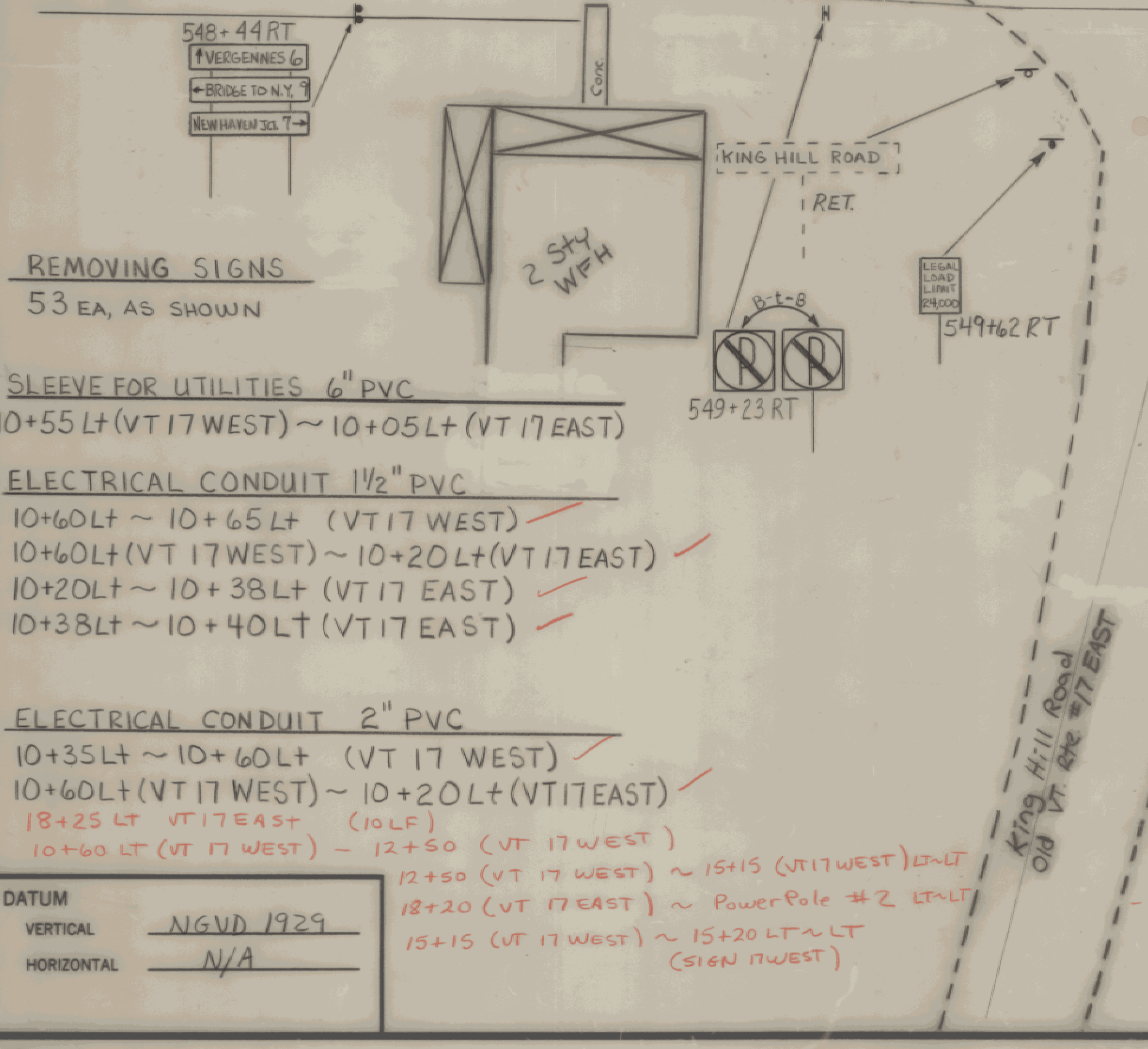
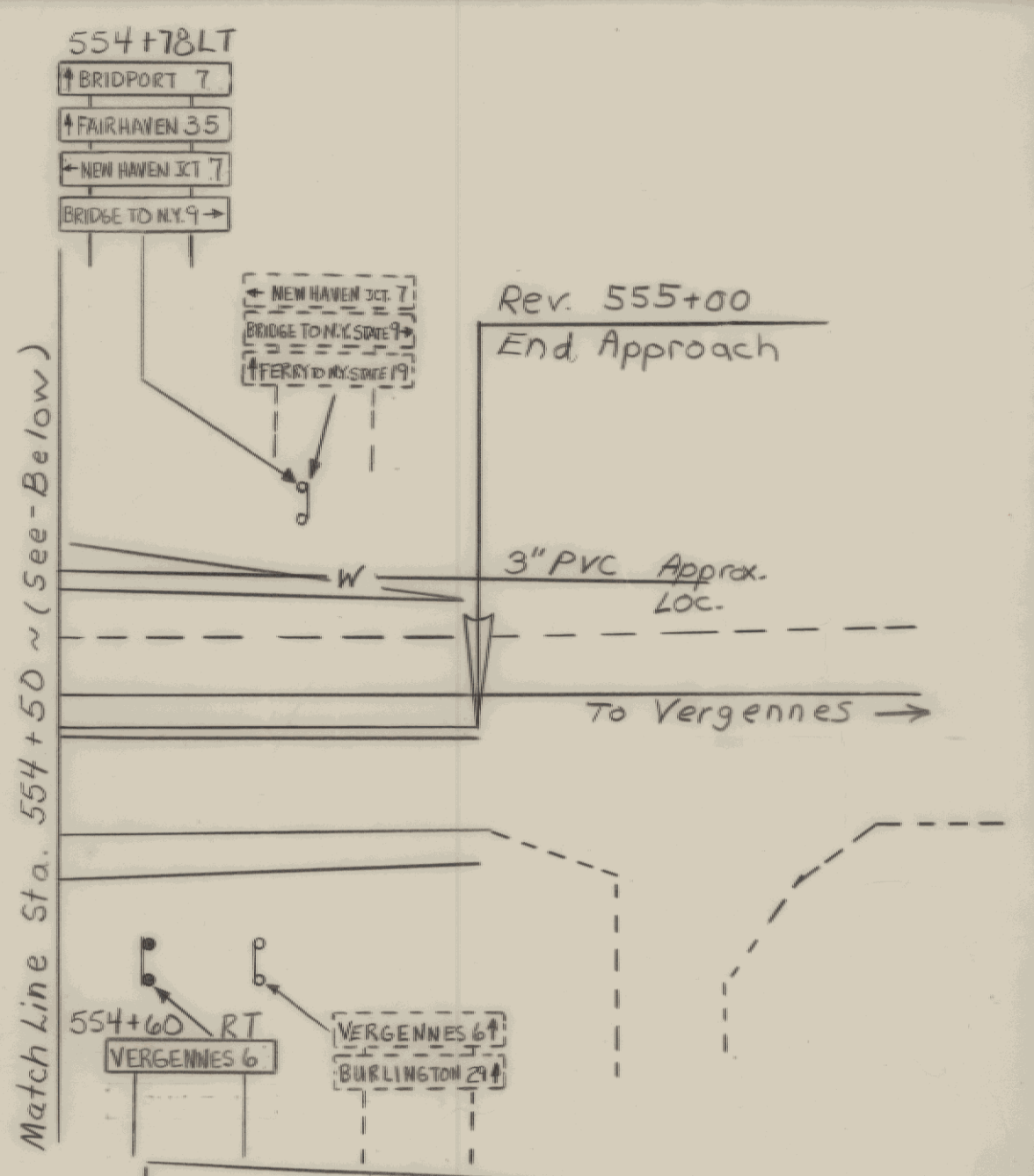
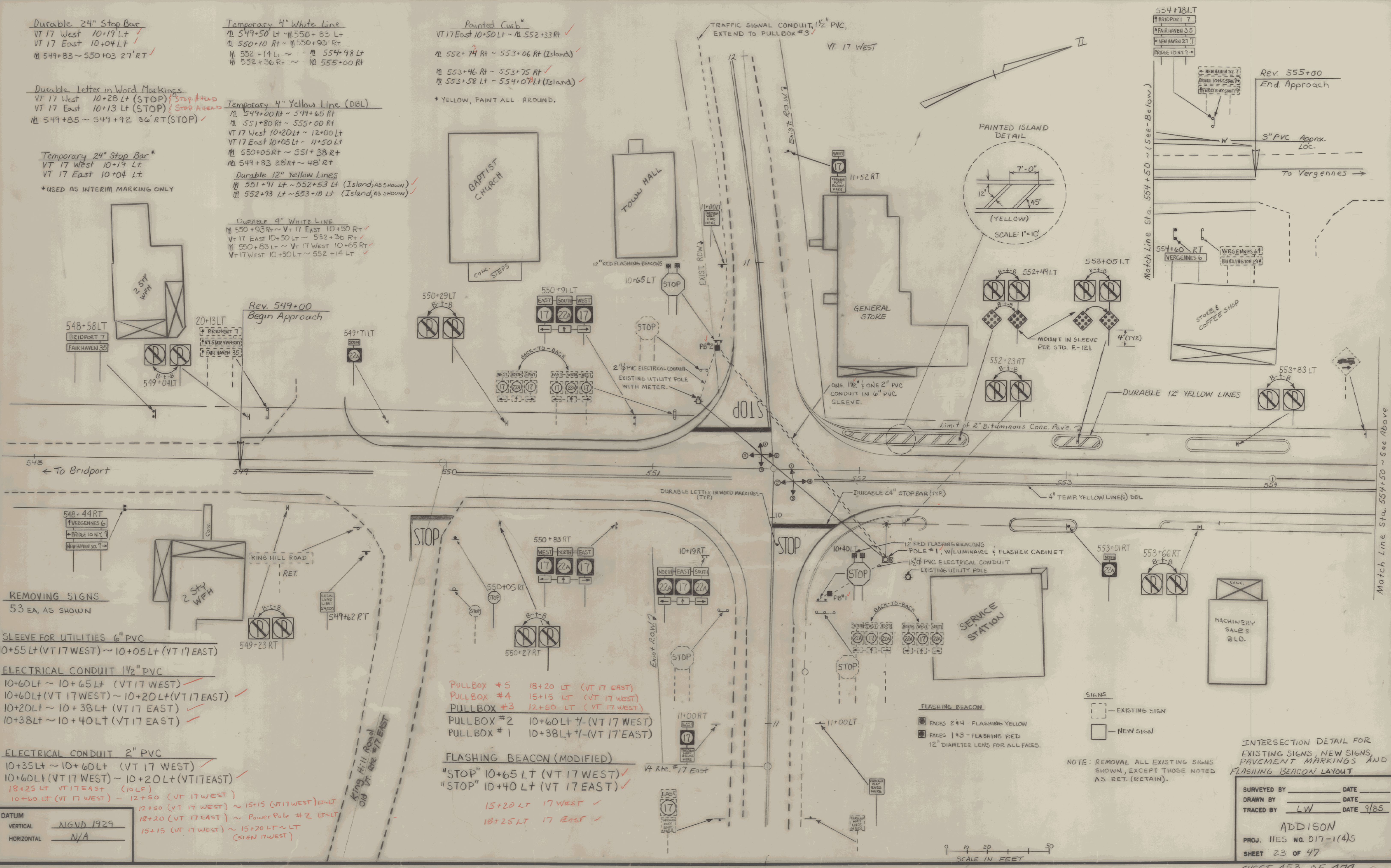
Temporary 4" Yellow Line (DBL)  
 M 549+00 Rt ~ 549+65 Rt ✓  
 M 551+80 Rt ~ 555+00 Rt ✓  
 VT 17 West 10+20 Lt ~ 12+00 Lt ✓  
 VT 17 East 10+05 Lt ~ 11+50 Lt ✓  
 M 550+05 Rt ~ 551+38 Rt ✓  
 M 549+83 28 Rt ~ 48 Rt ✓

\* YELLOW, PAINT ALL AROUND.

Temporary 24" Stop Bar\*  
 VT 17 West 10+19 Lt ✓  
 VT 17 East 10+04 Lt ✓  
 \*USED AS INTERIM MARKING ONLY

Durable 12" Yellow Lines  
 M 551+91 Lt ~ 552+53 Lt (Island, as shown) ✓  
 M 552+93 Lt ~ 553+18 Lt (Island, as shown) ✓

Durable 4" White Line  
 M 550+93 Rt ~ Vt 17 East 10+50 Rt ✓  
 Vt 17 East 10+50 Lt ~ 552+36 Rt ✓  
 M 550+83 Lt ~ Vt 17 West 10+65 Rt ✓  
 Vt 17 West 10+50 Lt ~ 552+14 Lt ✓



INTERSECTION DETAIL FOR EXISTING SIGNS, NEW SIGNS, PAVEMENT MARKINGS AND FLASHING BEACON LAYOUT

SURVEYED BY \_\_\_\_\_ DATE \_\_\_\_\_  
 DRAWN BY \_\_\_\_\_ DATE \_\_\_\_\_  
 TRACED BY LW DATE 9/85

ADDISON  
 PROJ. HES NO. 017-1(4)S  
 SHEET 23 OF 47

SHEET 453 OF 477