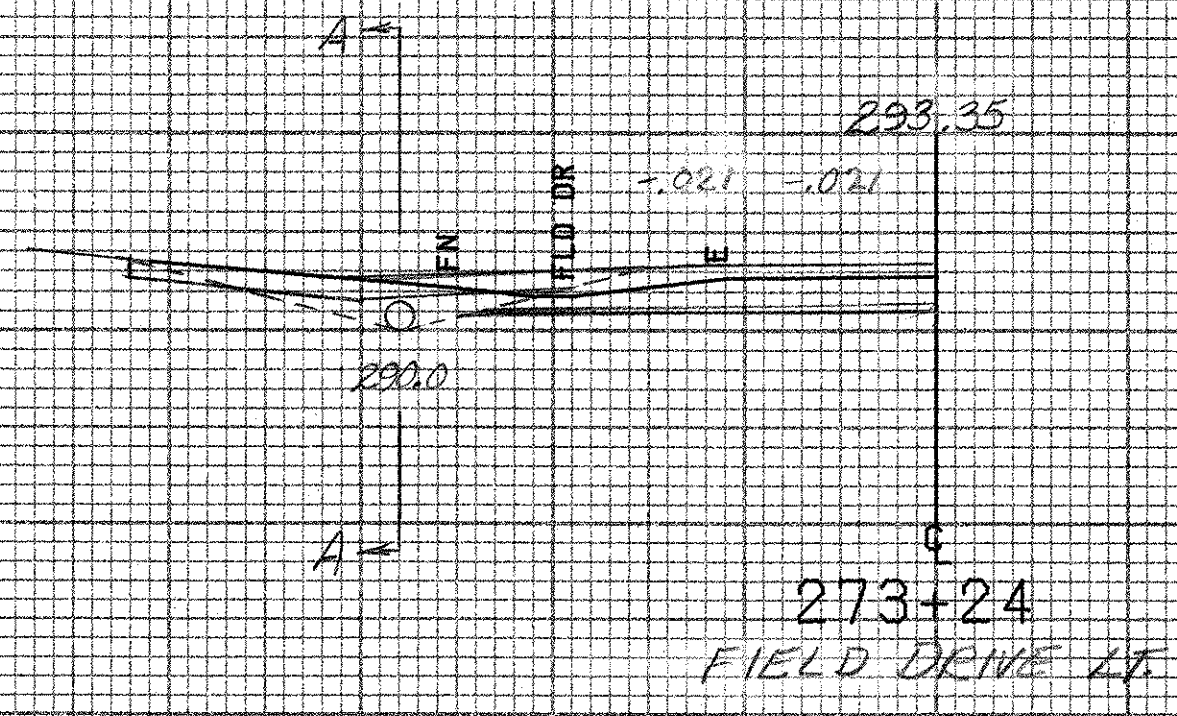
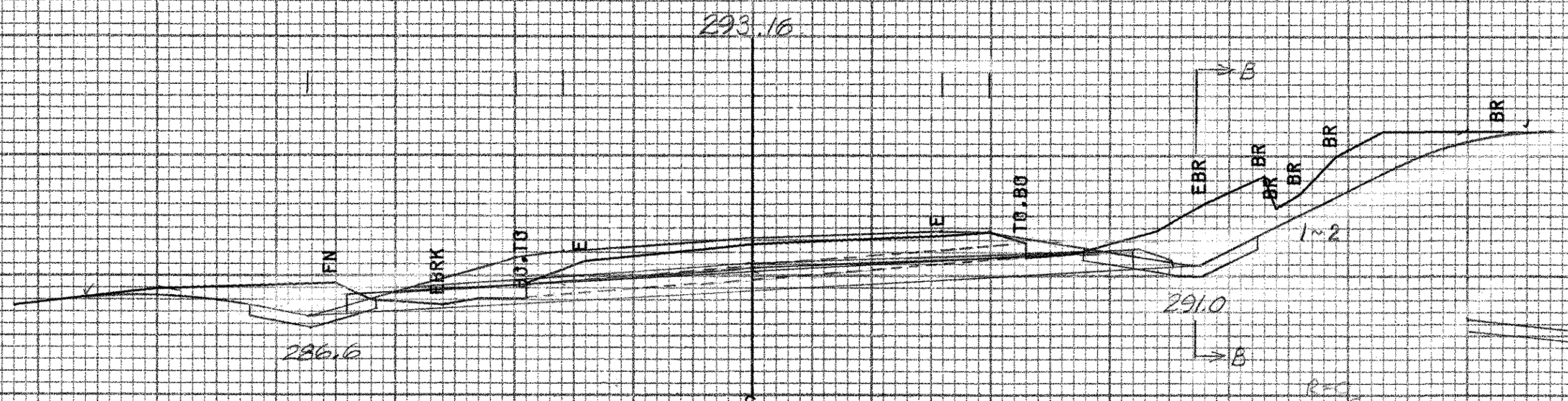


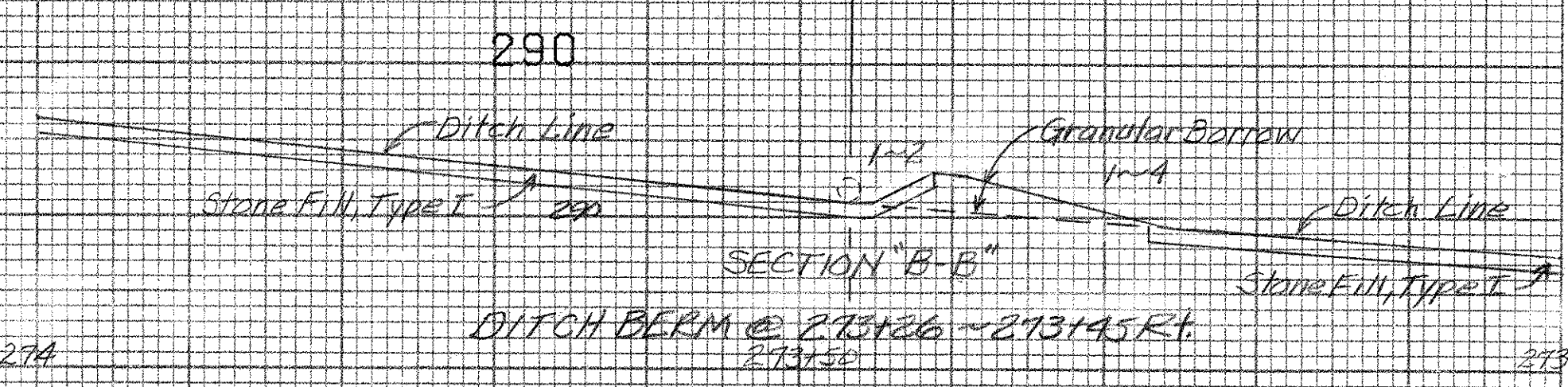
NTS  
 273+24 Lt.  
 New 24" x 36" CSP (06A) or RCP (III)  
 Option w/FS @ Inlet  
 273+24 Lt.  
 Construct Drive (12' Gravel)



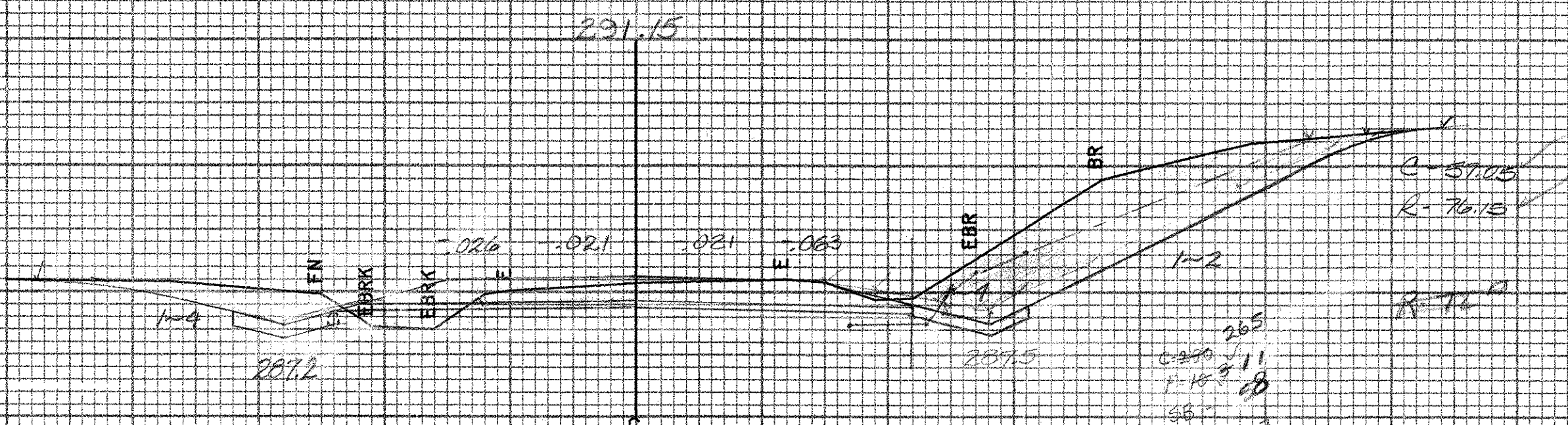
273+24  
 FIELD DRIVE LT.



273+29  
 Exist 21" x 15" ACCOMIP Askew 46° 40' RT.  
 Remove - New 18" x 06"  
 PCCSP (06A) or CARP (060)  
 Option w/FS @ Inlet



273+26 ~ 273+45 RT  
 Construct Berm  
 (See Section B-B' Above)



273+00

Station	Existing	Proposed
273+00	290.7	291.4
273+05	291.2	291.9
273+10	291.7	292.4
273+15	292.2	292.9
273+20	292.7	293.4
273+25	293.2	293.9
273+30	293.7	294.4
273+35	294.2	294.9
273+40	294.7	295.4
273+45	295.2	295.9
273+50	295.7	296.4
273+55	296.2	296.9
273+60	296.7	297.4
273+65	297.2	297.9
273+70	297.7	298.4
273+75	298.2	298.9
273+80	298.7	299.4
273+85	299.2	299.9
273+90	299.7	300.4
273+95	300.2	300.9
274+00	300.7	301.4

H. Rte # 125 West  
 FROM STA. 273+00 TO STA. 273+24  
 PROJECT NAME SHOREHAM-BRIDPORT-ADDISON WEST  
 NO. FC17-1(2) PLOTTED 04/11/85  
 SURVEYED BY BUSHEY FEB 1985  
 SHEET 416 OF 420 SHEETS SURVEY NO. 06 OF 177

SCALE 1" = 10 FEET