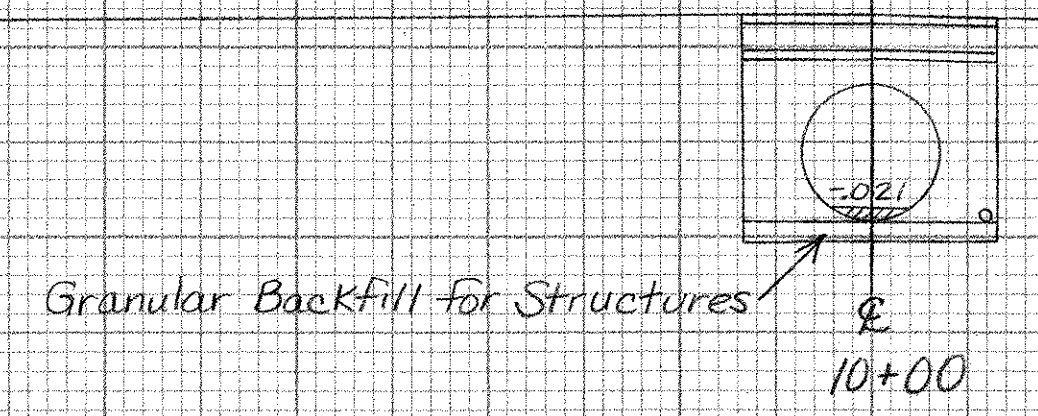


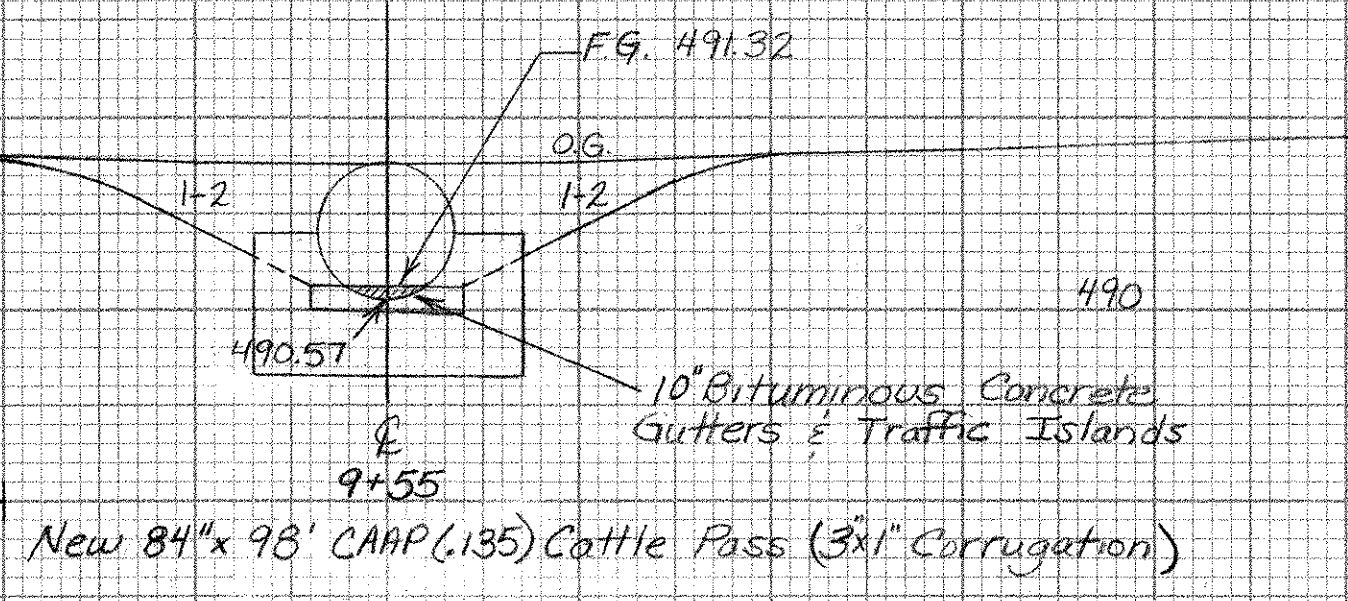
SIDE VIEW OF HEADWALL

Inv. 490.80



10+00

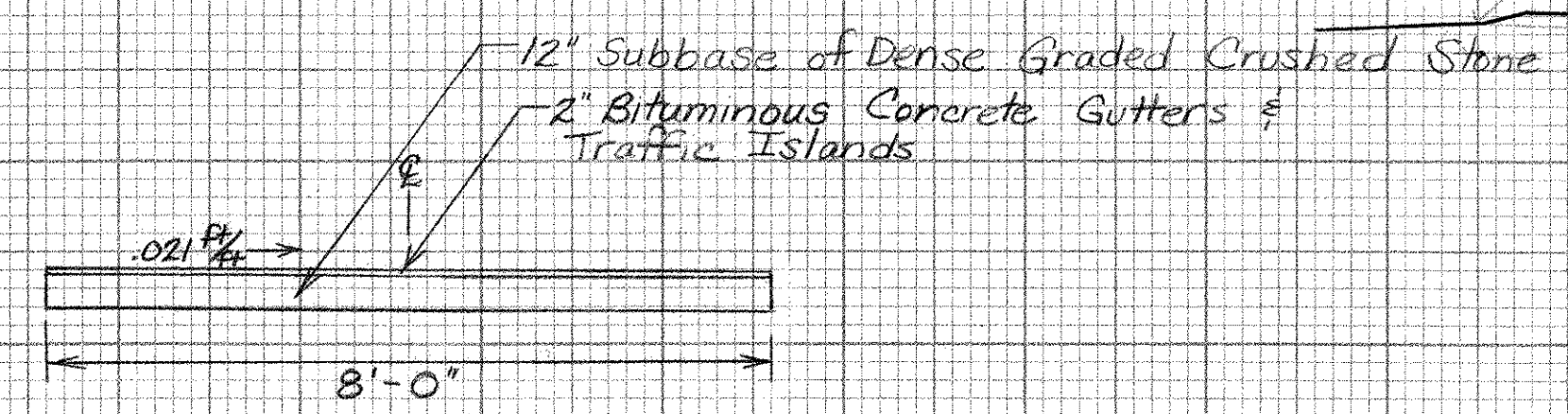
Scale 10 Feet



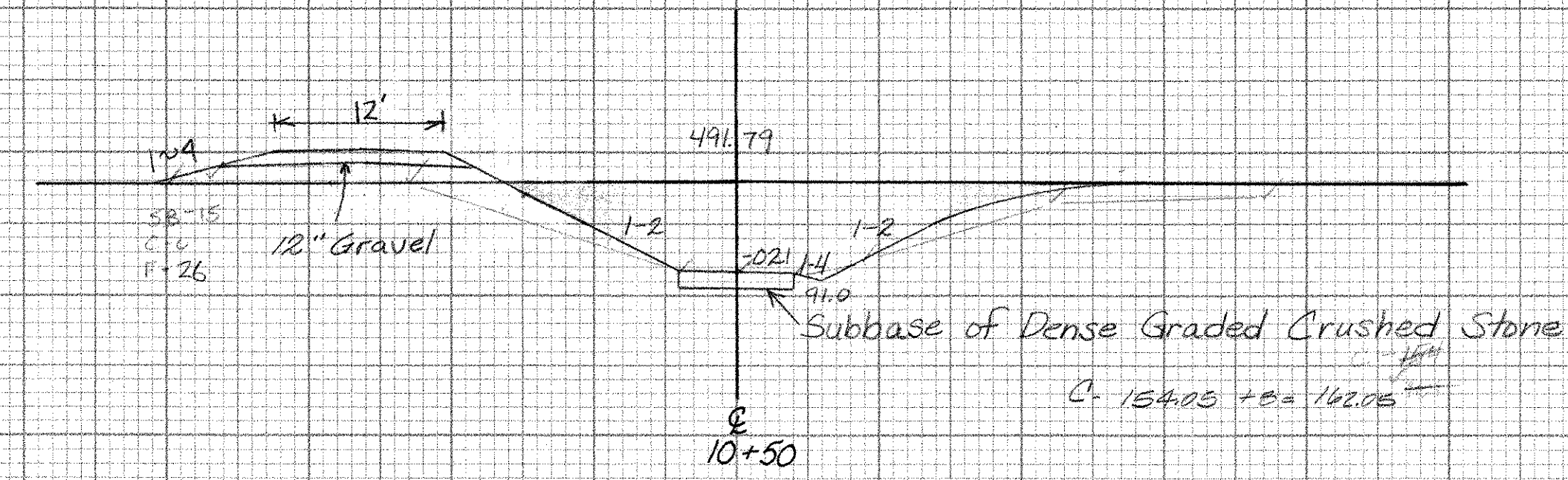
New 84" x 98" CAAP (135) Cattle Pass (3x1" Corrugation)

TYPICAL BIT CONCRETE PAVE PAD AT INLET AND OUTLET

5 Feet Scale

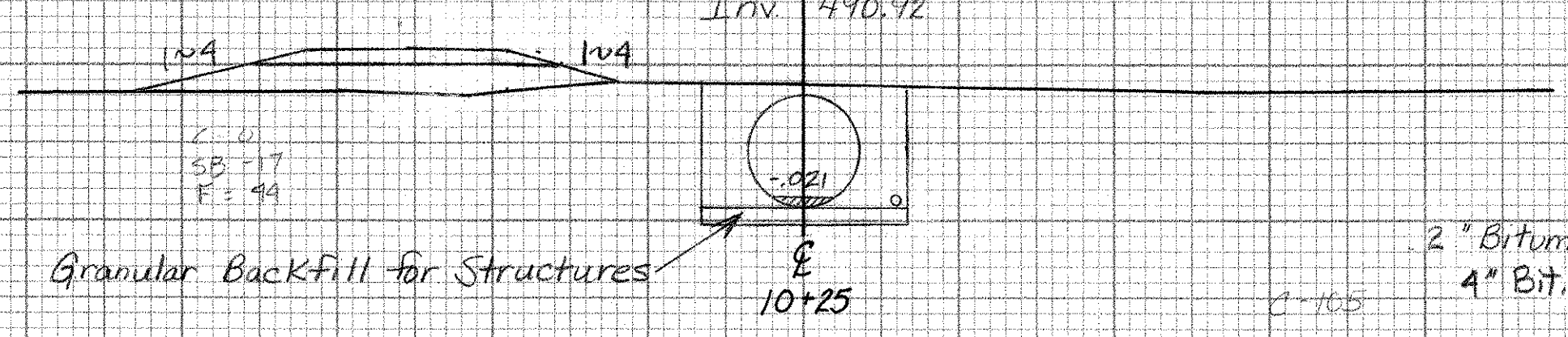


TYPICAL BIT CONCRETE PAVE PAD AT INLET AND OUTLET



Sta 10+44
End Structure Excavation
Begin Unclassified Channel Excavation

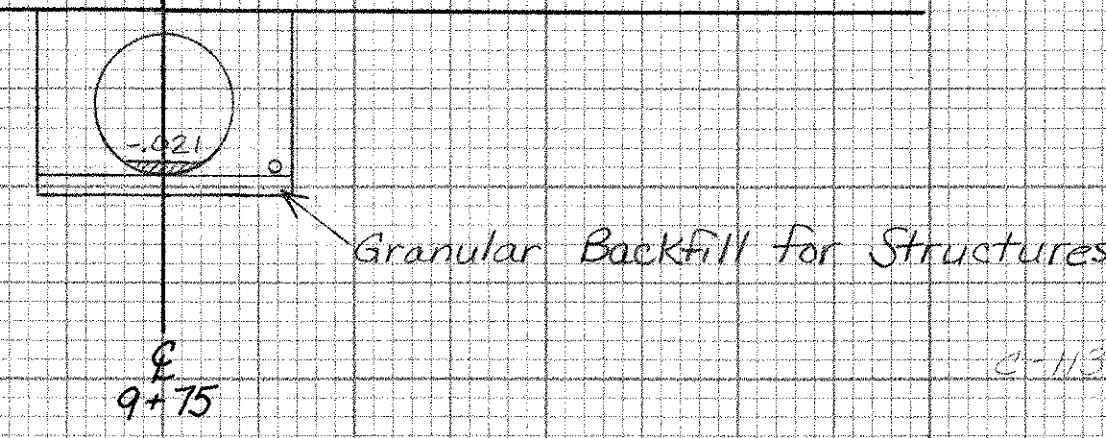
10+50



Granular Backfill for Structures

10+25

Inv. 490.67



Granular Backfill for Structures

9+75

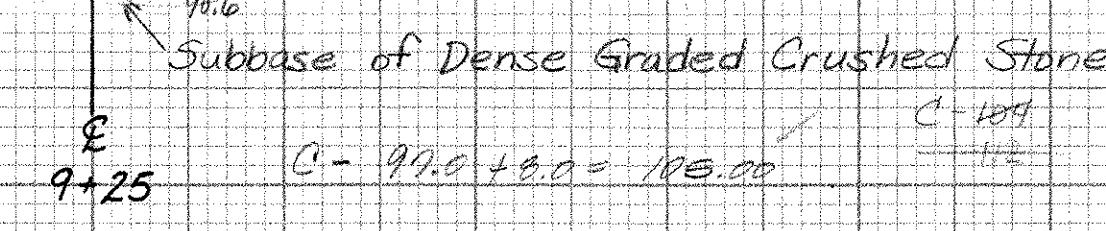
Sta 9+54
End Unclassified Channel Excavation
Begin Structure Excavation

491.3

9+50

491.2

9+25



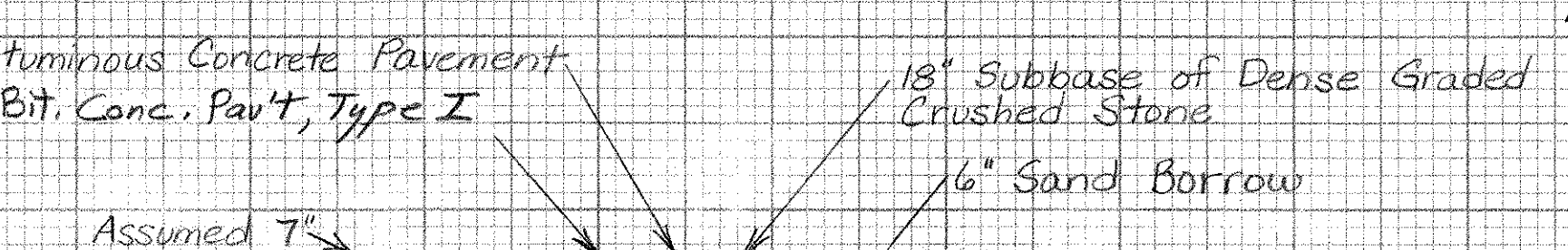
Subbase of Dense Graded Crushed Stone

9+25

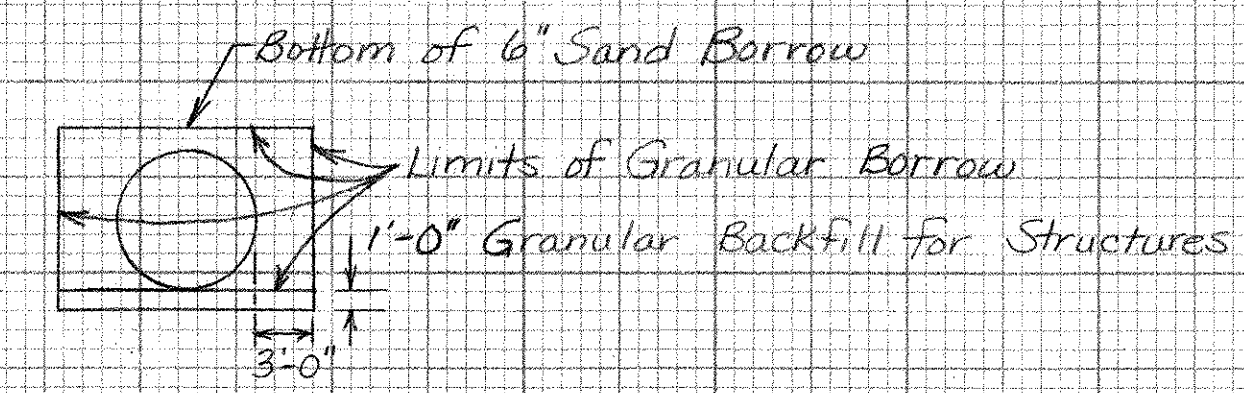
CHANNEL

0	491.8
4	491.8
8	491.6
12	491.0
16	490.0
20	490.0
-16.0	491.8
-4.0	491.8
0	491.8

490



DEPTH TRANSITION



TYPICAL FOR GRANULAR BORROW AND GRANULAR BACKFILL FOR STRUCTURES

CHANNEL

0	491.8
2	491.0
4	491.5
6	491.8
8	491.7
10	491.1
12	491.3
14	491.8
16	491.0
18	491.0
20	491.2
0	491.2

490

CHANNEL

0	491.8
10	491.7
20	491.4
30	491.4
40	491.4
50	491.2
60	491.5
70	491.5
80	491.0
90	491.0
100	491.7
110	491.7
120	491.3
0	491.3

490

Channel Section of Cattle Pass @ Addison MM 3.09

FROM STA 9+25 TO STA 10+50
PROJECT NAME SHOREHAM - BRIDPORT - ADDISON
NO. F017-1(2) PLOTTED 05/18/88
SURVEYED BY FANTONI 10/87 OOB
SHEET 427 OF 420 SHEETS SHEET 407 OF 477

SCALE 10 FEET