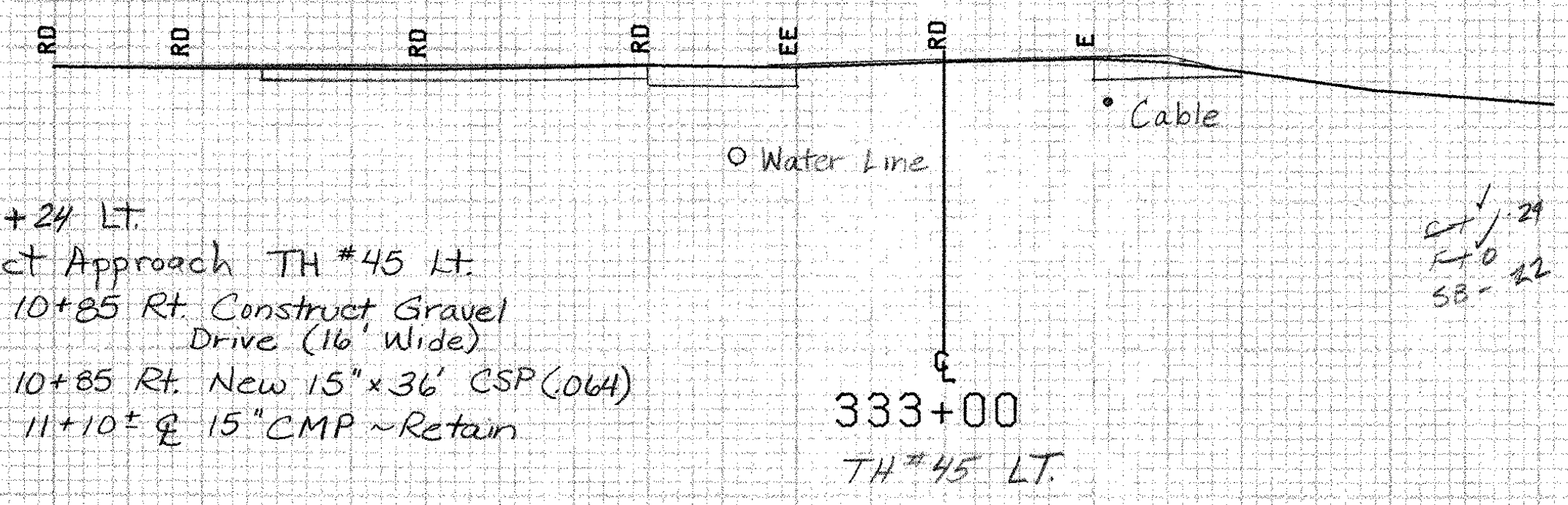


333+24 RT
Construct Approach TH#9

Pole #35
136+19+19

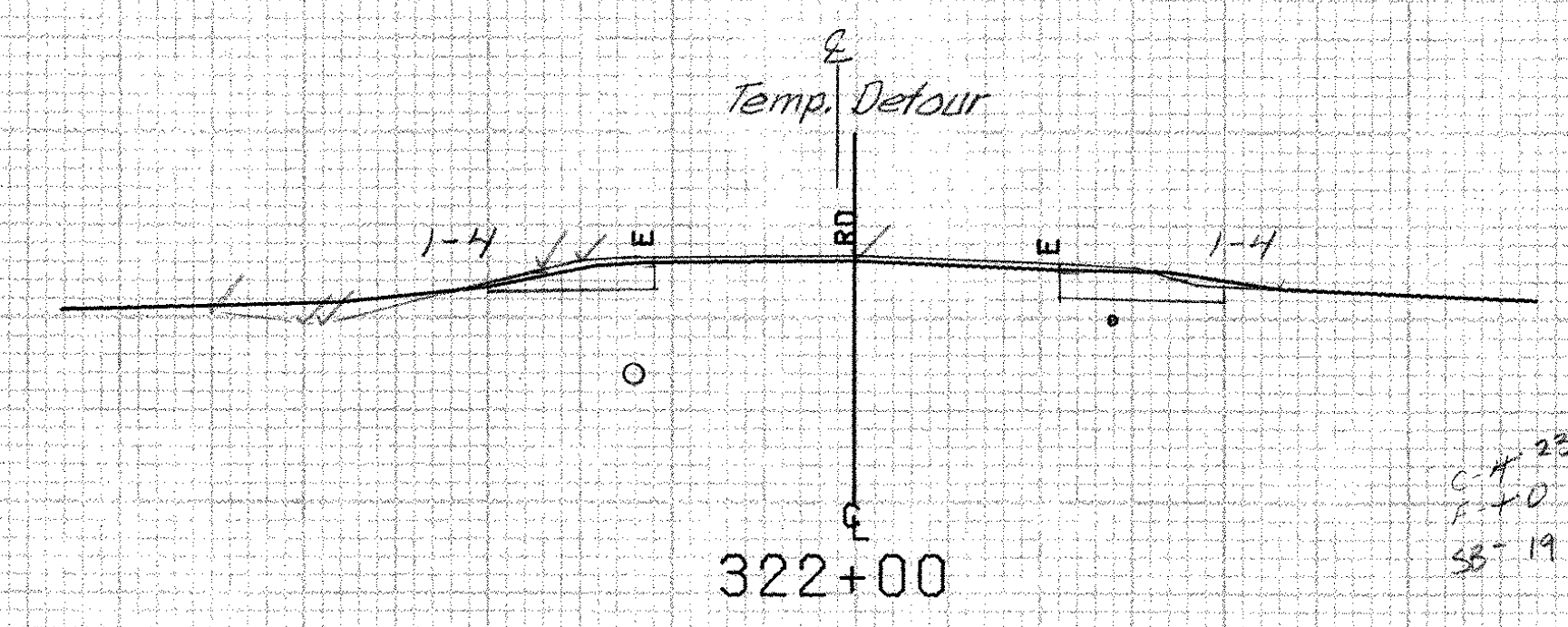
333+24 LT
Construct Approach TH#45 LT.
TH#45 10+85 Rt. Construct Gravel Drive (16' Wide)
TH#45 10+85 Rt. New 15"x36" CSP (064)
TH#45 11+10± 12" CMP ~ Retain

322+25 LT
End Construction of Temporary Detour



490

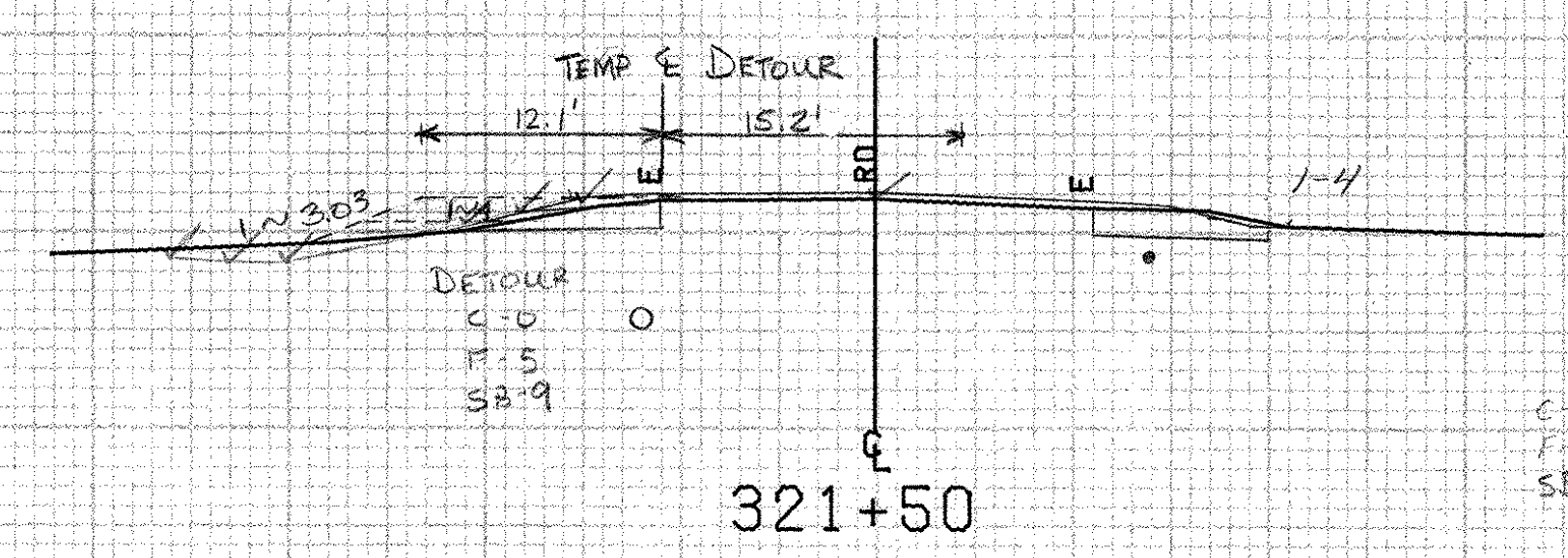
322+49 RT.
Existing 12" CMP ~ Retain



530

Detour

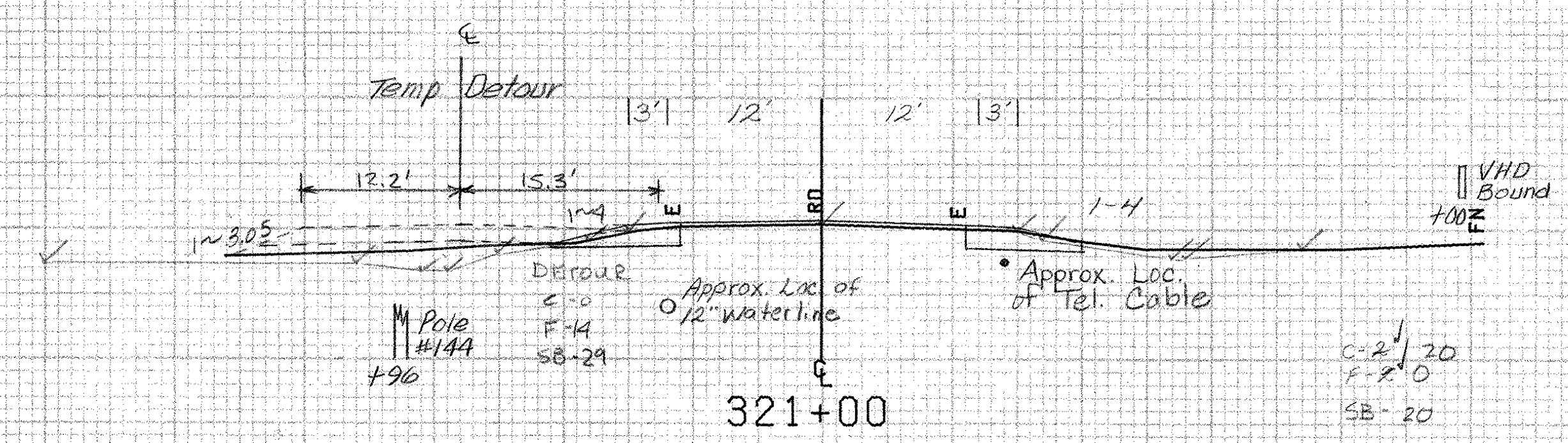
-15	531.8
-18	530.9
-21	530.4
-24	529.9
-27	529.3
-23	531.8
-15	531.8



530

Detour

-15	529.9
-19	529
-26	528.8
-32	528.4
-45	529
-40	530
-15	529.9



530

BRIDPORT MM 6.10 ~ MM 6.30

FROM STA.	321+00	TO STA.	333+00
PROJECT NAME	SHOREHAM-BRIDPORT-ADDISON		
NO.	F017-1(2)	PLOTTED	02/2/84
SURVEYED BY	FANTONI	FEBRUARY 84	
SHEET	379	OF 420 SHEETS	SHEET 379 OF 471

SCALE 1" = 10 FEET