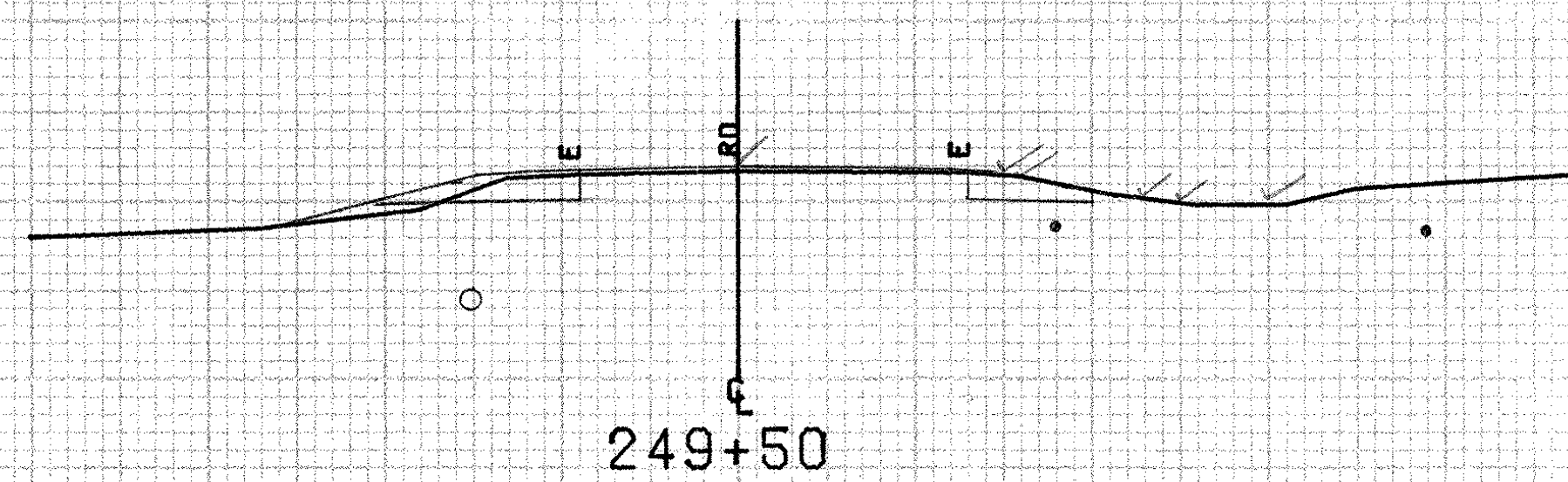
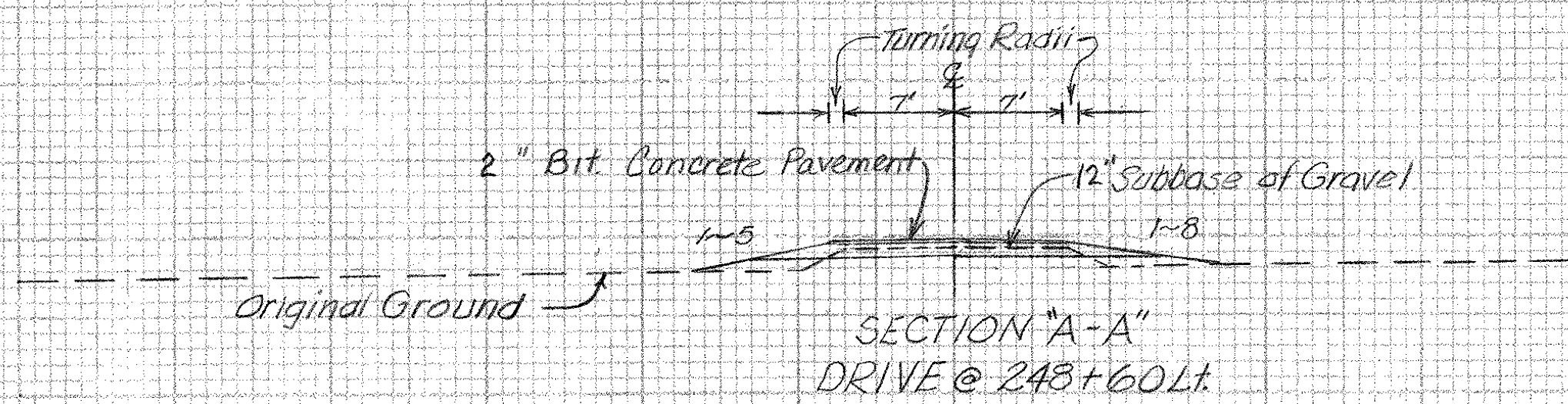


500



500



248+79 Lt.  
Relocate Mailbox, Single Support

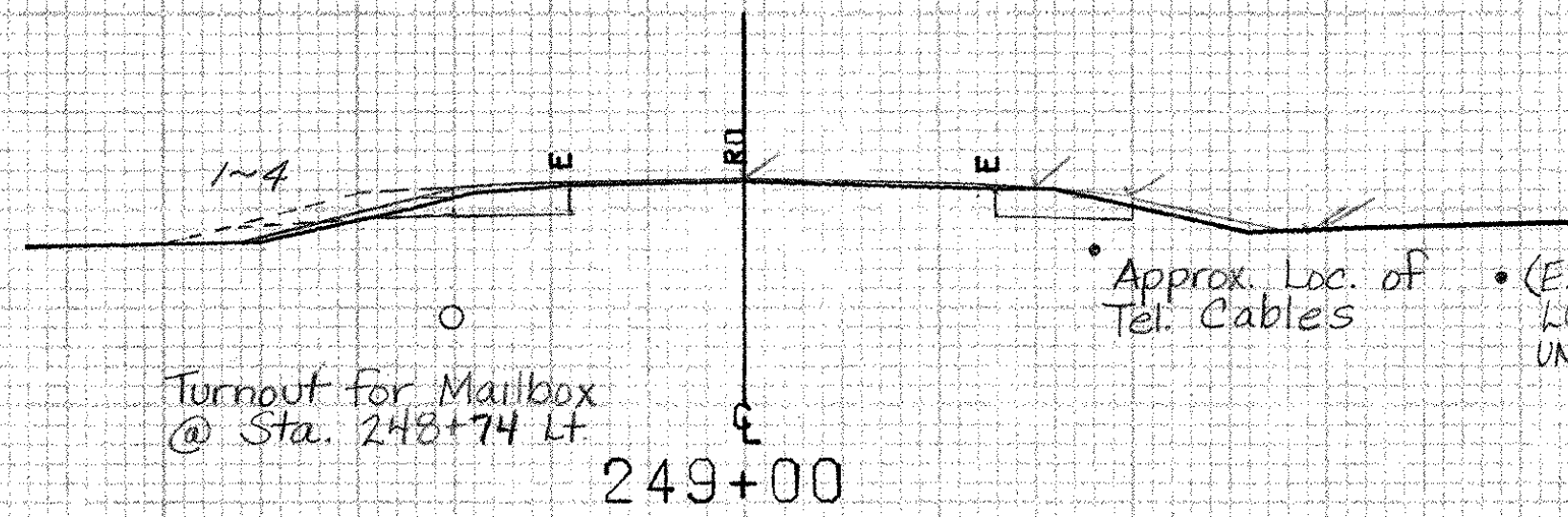
248+69 ~ 249+04 Lt.  
Construct Turnout for Mailbox (15" Subbase of Gravel)

248+60 Lt.  
Construct Paved Drive (14 feet wide)

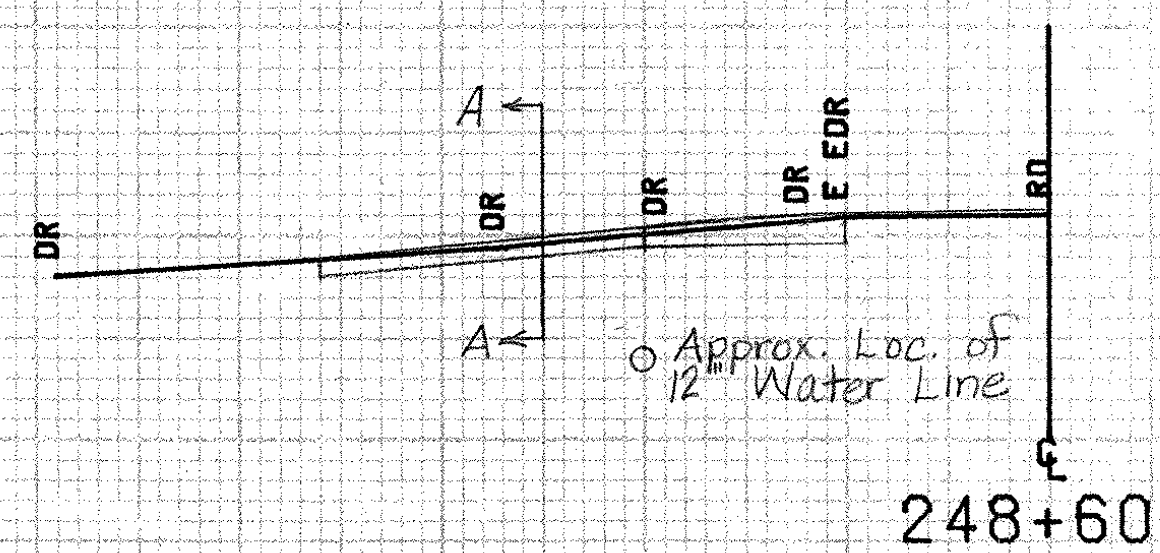
Pole #102  
+12

Iron Pipe  
+20

Tel. Pole #5  
+07



500



500

BRIDPORT MM 4.55 ~ MM 4.73

FROM STA. 248+60	TO STA. 250+00
PROJECT NAME	SHOREHAM-BRIDPORT-ADDISON
NO.	F017-1(2)
SURVEYED BY	FANTONI
SHEET 338 OF 480 SHEETS	PLOTTED 02/10/84
	JAN 1984
	SHEET 338 OF 477

SCALE 10 FEET