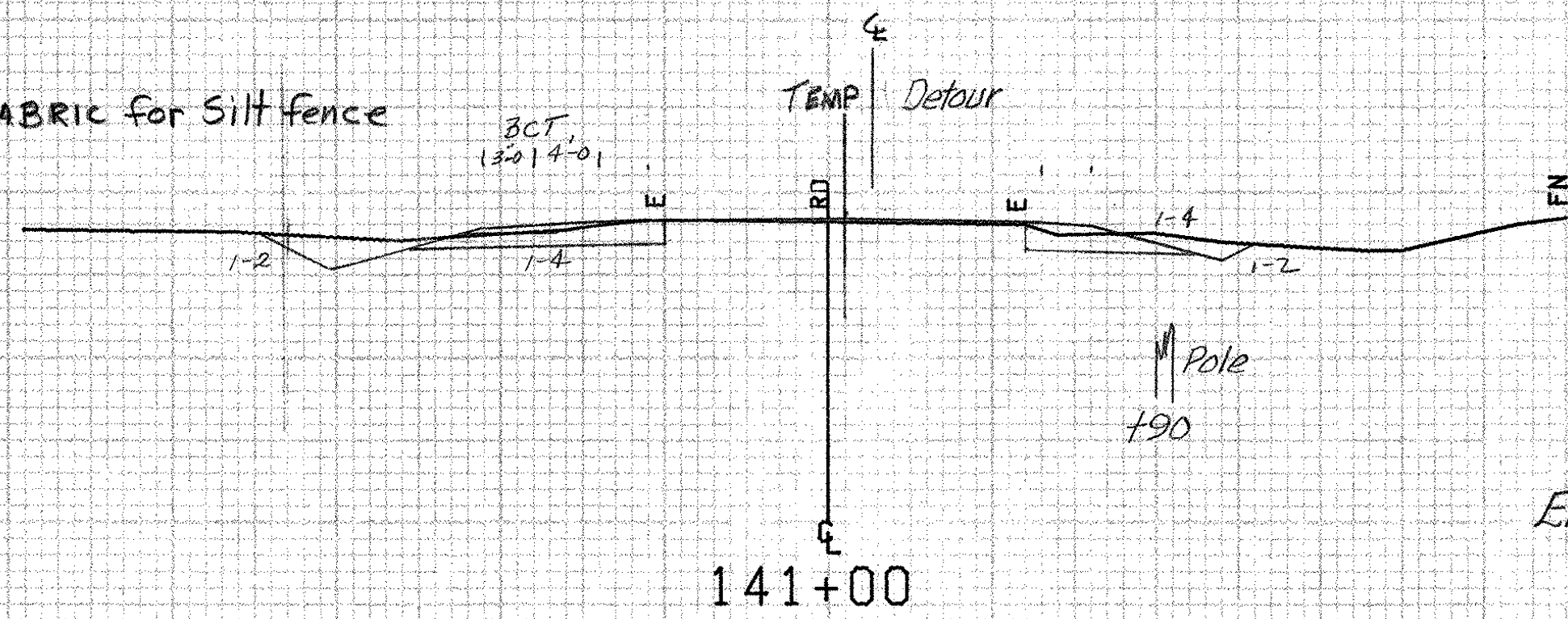


141+00 LT.
End GEOTEXTILE FABRIC for Silt fence



C-20' 45"
F.O.V. 0
SB-23

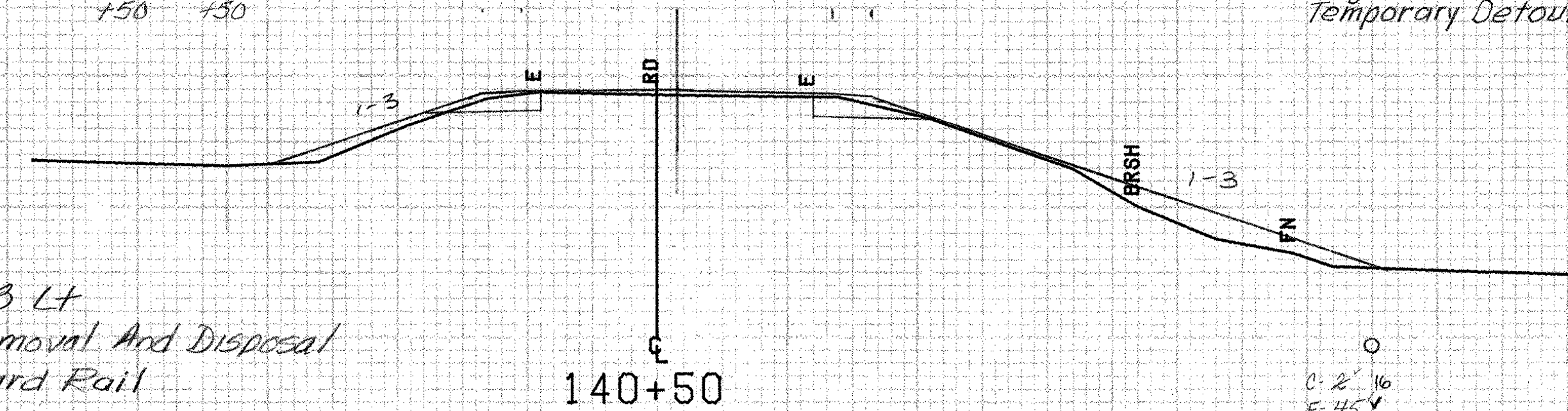
490

140+72 RT
End Removal And Disposal of Guard Rail

141+00

VHD BOUND +50 VHD BOUND +50

140+48 LT
End Removal And Disposal
of Guard Rail

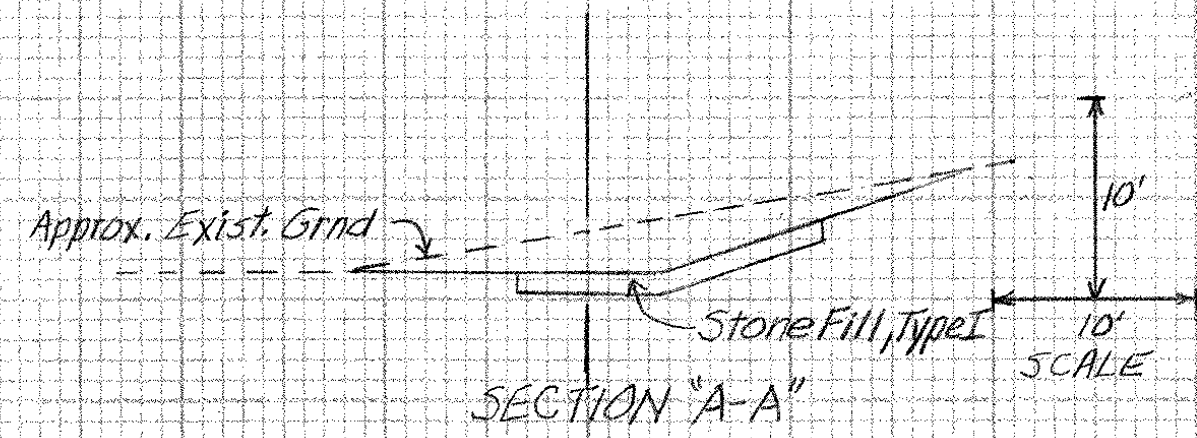


C-2' 16"
F-45'
SB-16

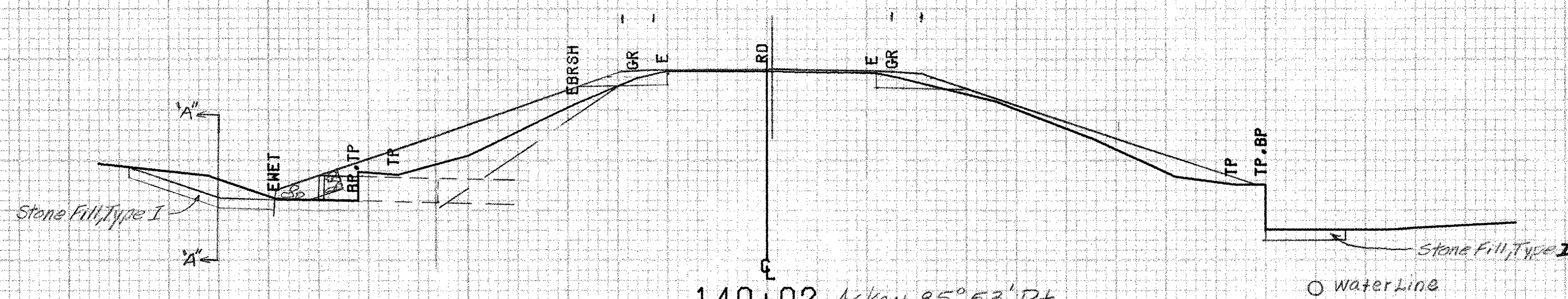
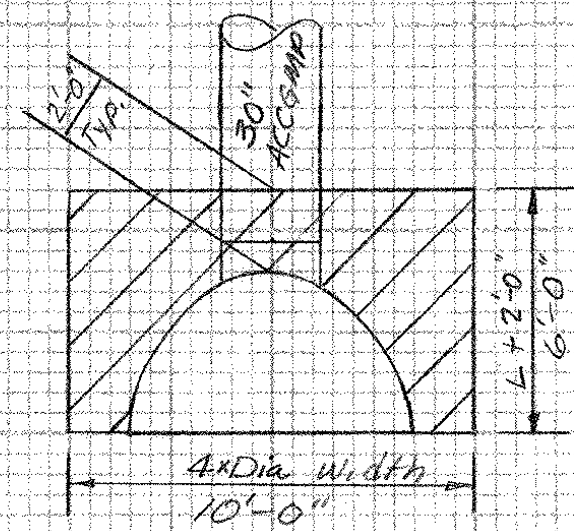
490

140+70 RT
Begin Construction of
Temporary Detour

140+50



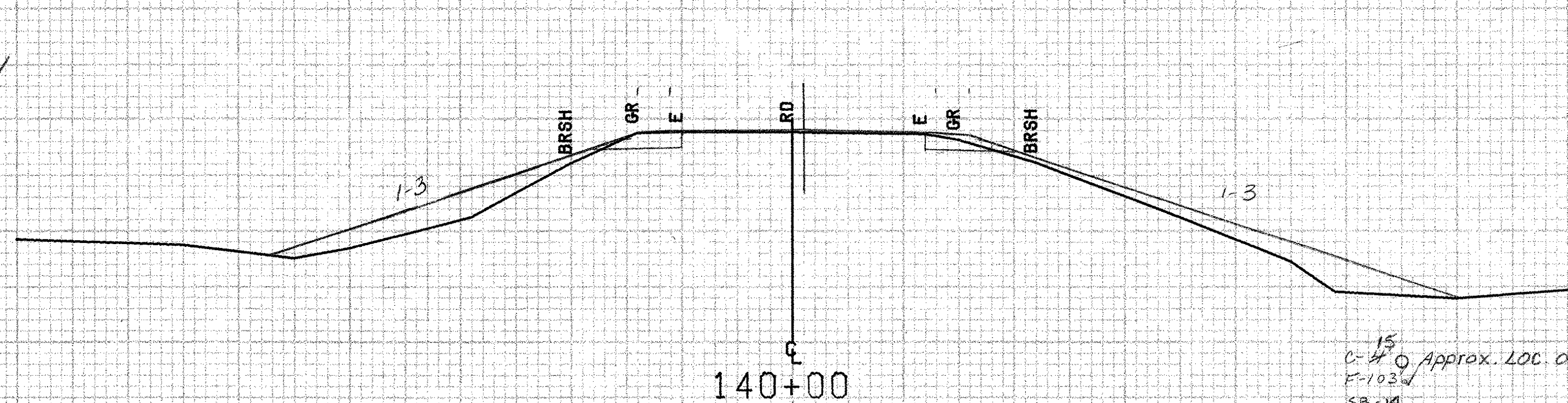
Stone Fill, Type I At M.E.S. Detail
Typical for All 24" and Larger Culverts



140+02 Askew 85°53' RT
30" ACCGMP Retain, Remove & Relay 8' @ Inlet
Extend @ Inlet w/ New 30" x 4' CSP 079
w/ 30" CSPES (.079") & Stone Fill Type I
@ Inlet & Outlet

490

+07'±
18" Hickory
Save



C-4' 0" Approx. LOC of 12" Water Line
F-103'
SB-19

490

140+00

SHOREHAM-BRIDPORT MM 6.17 ~ MM 0.07

FROM STA.	140+00	TO STA.	141+00
PROJECT NAME	SHOREHAM-BRIDPORT-ADDISON		
NO.	F017-1(2)	PLOTTED	02/10/84
SURVEYED BY	FANTONI		
SHEET	279 OF 420 SHEETS	SHEET	279 OF 471

SCALE 1" = 10 FEET