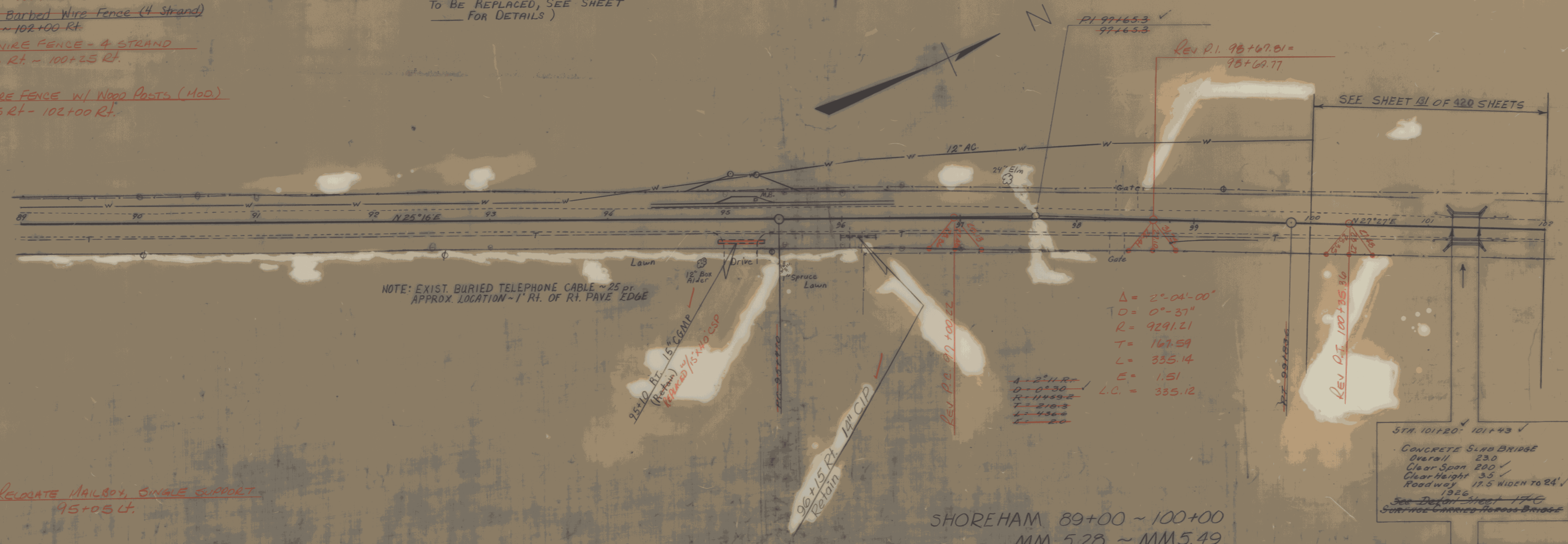


Removing and Resetting Fence  
 100+00 Rt. ~ 107+00 Rt.  
 96+50 Rt. ~ 100+25 Rt.  
 Temporary Barbed Wire Fence (4 Strand)  
 100+00 Rt. ~ 102+00 Rt.  
 BARBED WIRE FENCE - 4 STRAND  
 96+55 Rt. ~ 100+25 Rt.  
 WOVEN WIRE FENCE W/ Wood Posts (MOD)  
 96+55 Rt. ~ 102+00 Rt.

RELOCATE MAILBOX, SINGLE SUPPORT ✓  
 95+15 Lt. (EXISTING 24" DIA. CONC. POST TO BE REPLACED, SEE SHEET FOR DETAILS)

CONSTRUCT TURNOUT (Mailbox) ✓  
 94+90 ~ 95+40 Lt.



NOTE: EXIST. BURIED TELEPHONE CABLE ~ 25 ft. APPROX. LOCATION ~ 1' Rt. OF Rt. PAVE EDGE

$\Delta = 2^{\circ}04'00''$   
 $T = 0^{\circ}37''$   
 $R = 9291.21$   
 $L = 167.59$   
 $E = 1.51$   
 $L.C. = 335.12$

STR. 101+20 ~ 101+43 ✓  
 CONCRETE SLAB BRIDGE  
 Overall 230 ✓  
 Clear Span 200 ✓  
 Clear Height 3.5 ✓  
 Roadway 17.5 WIDEN TO 24' ✓  
 1926  
 See Detail Sheet 176  
 Set into Existing Retaining Bridge

RELOCATE MAILBOX, SINGLE SUPPORT  
 95+05 Lt.

SHOREHAM 89+00 ~ 100+00  
 MM 5.28 ~ MM 5.49

