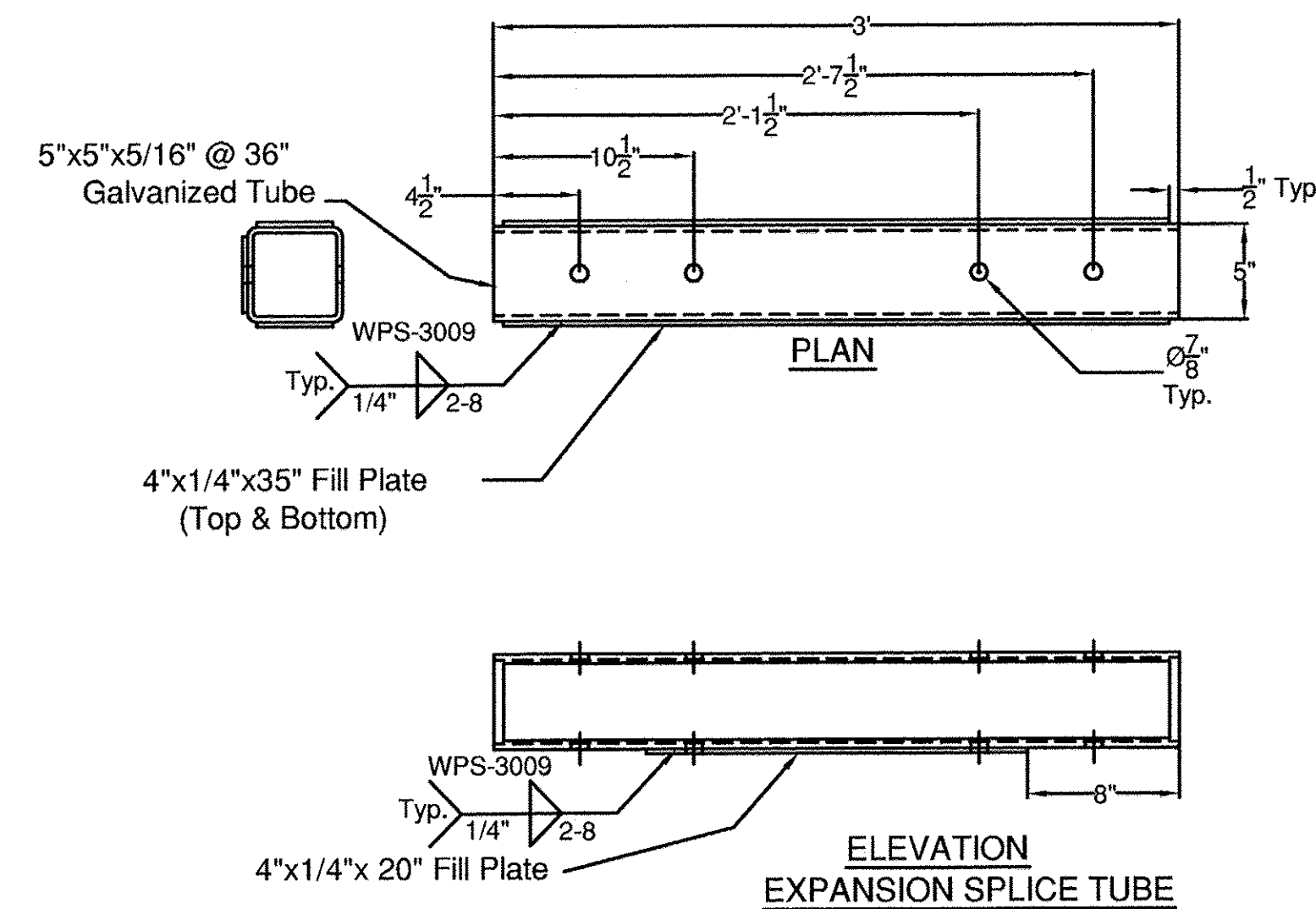
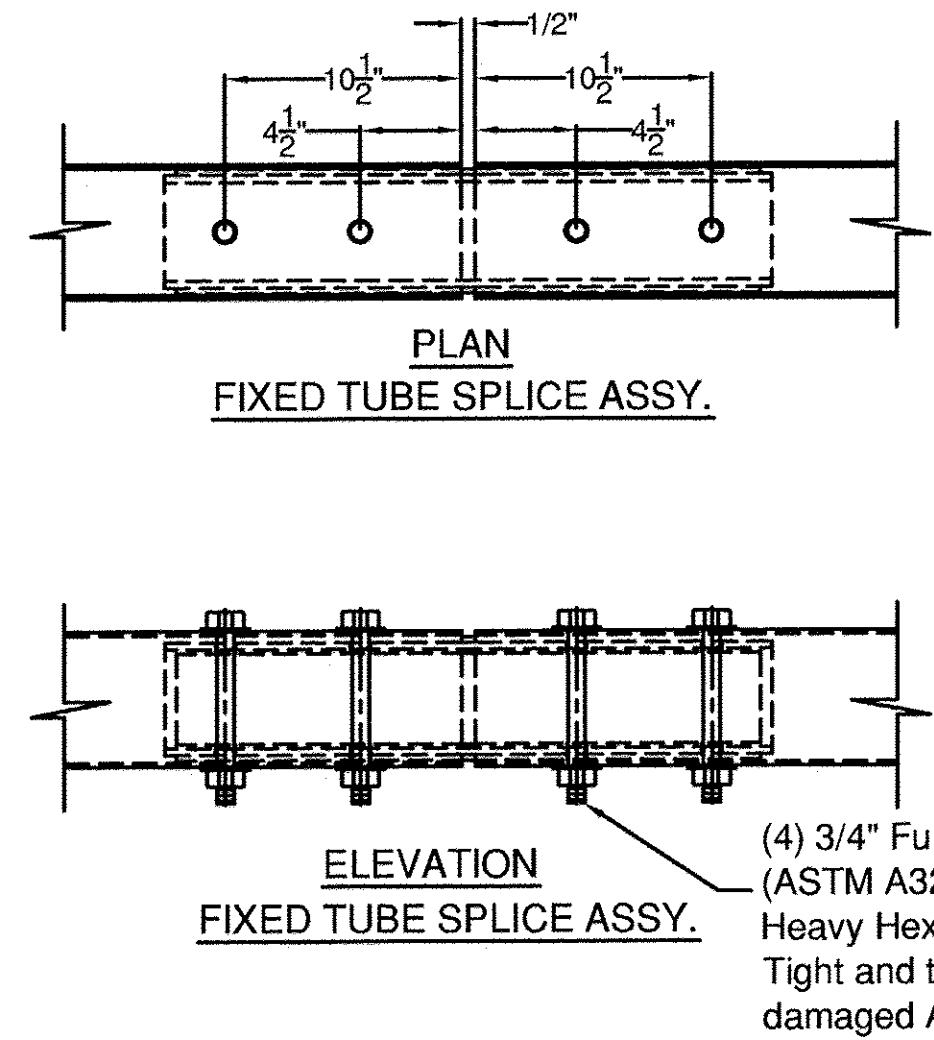
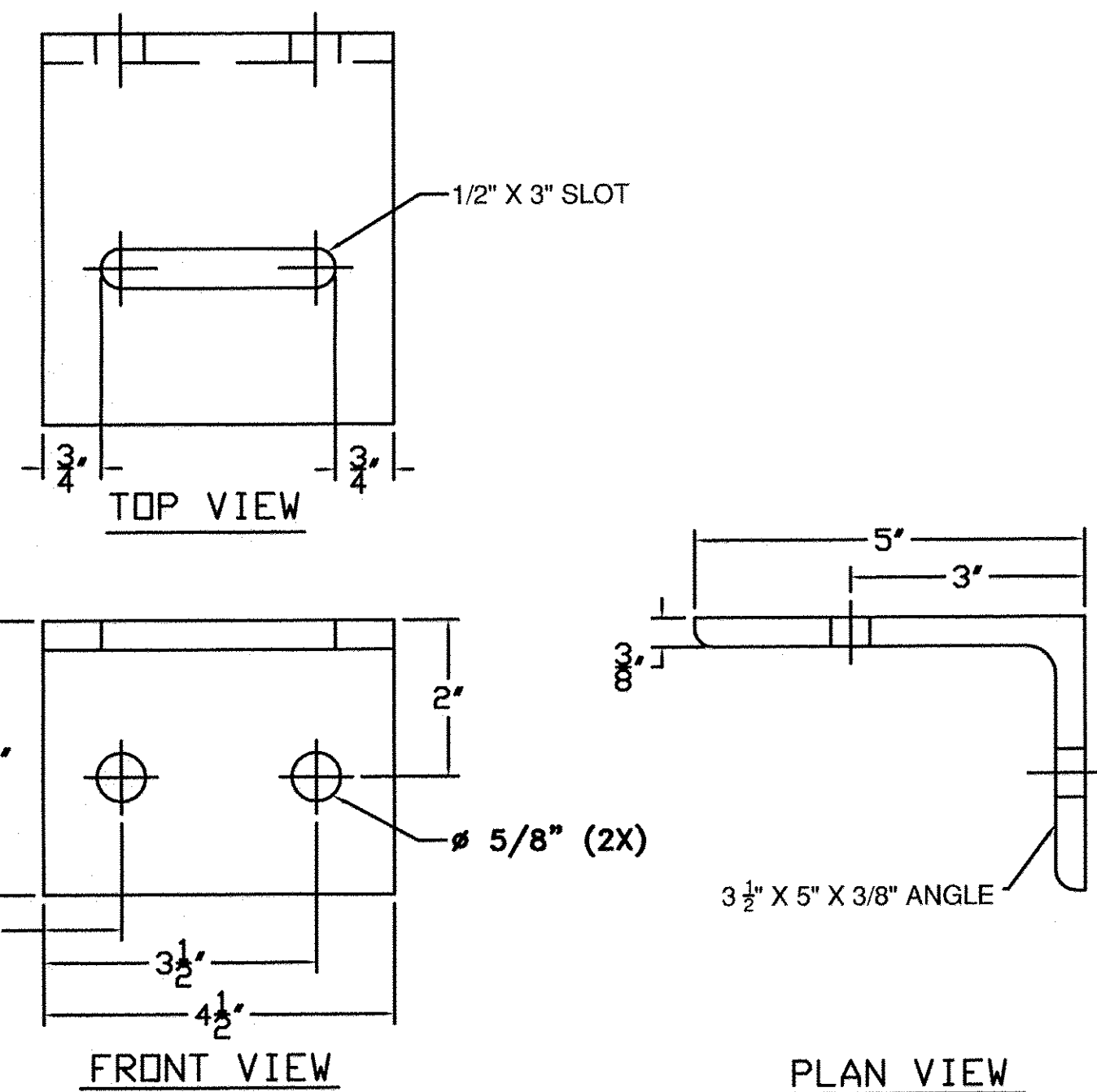
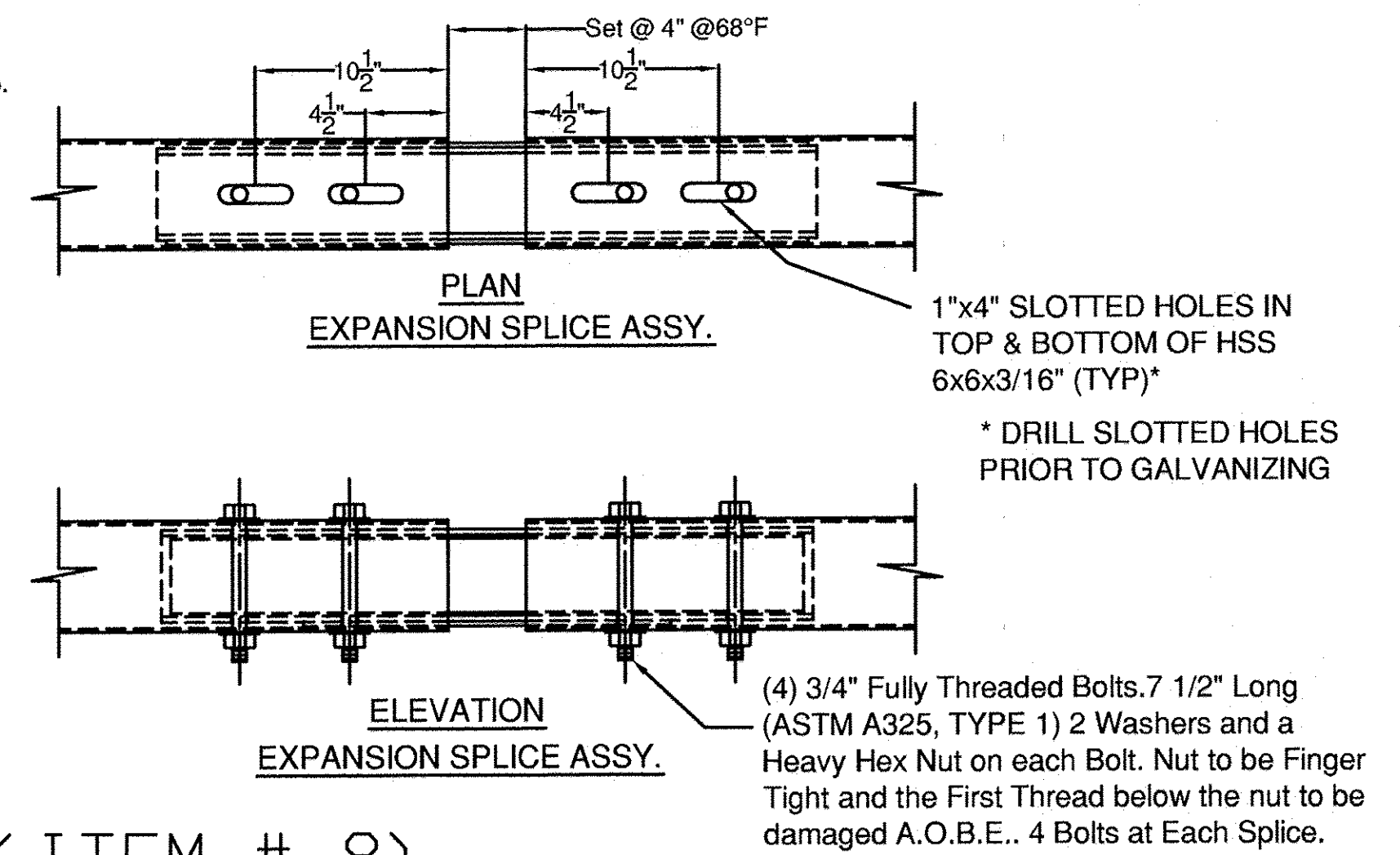


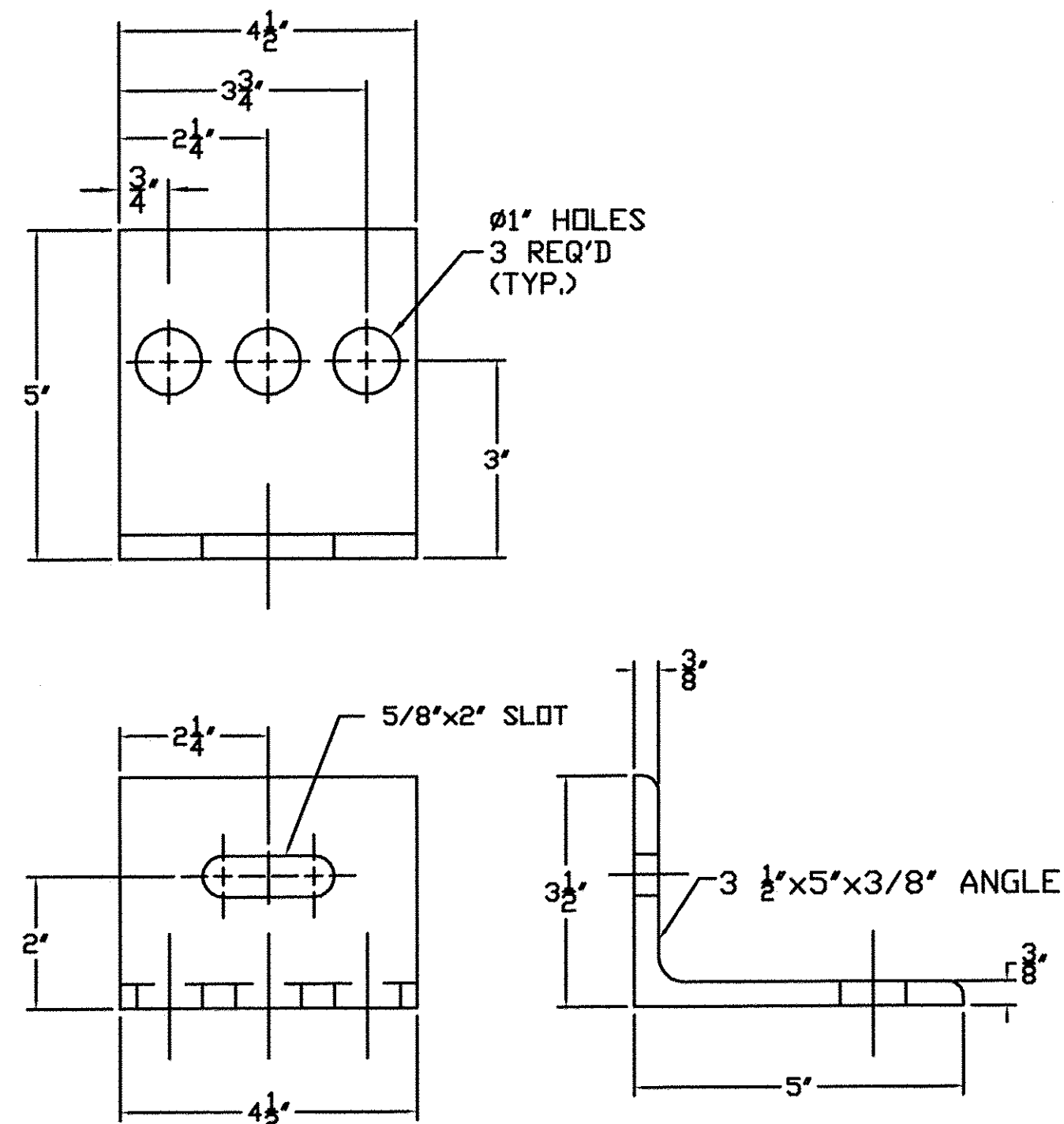
SPLICE TUBE - FIXED (ITEM # 7)



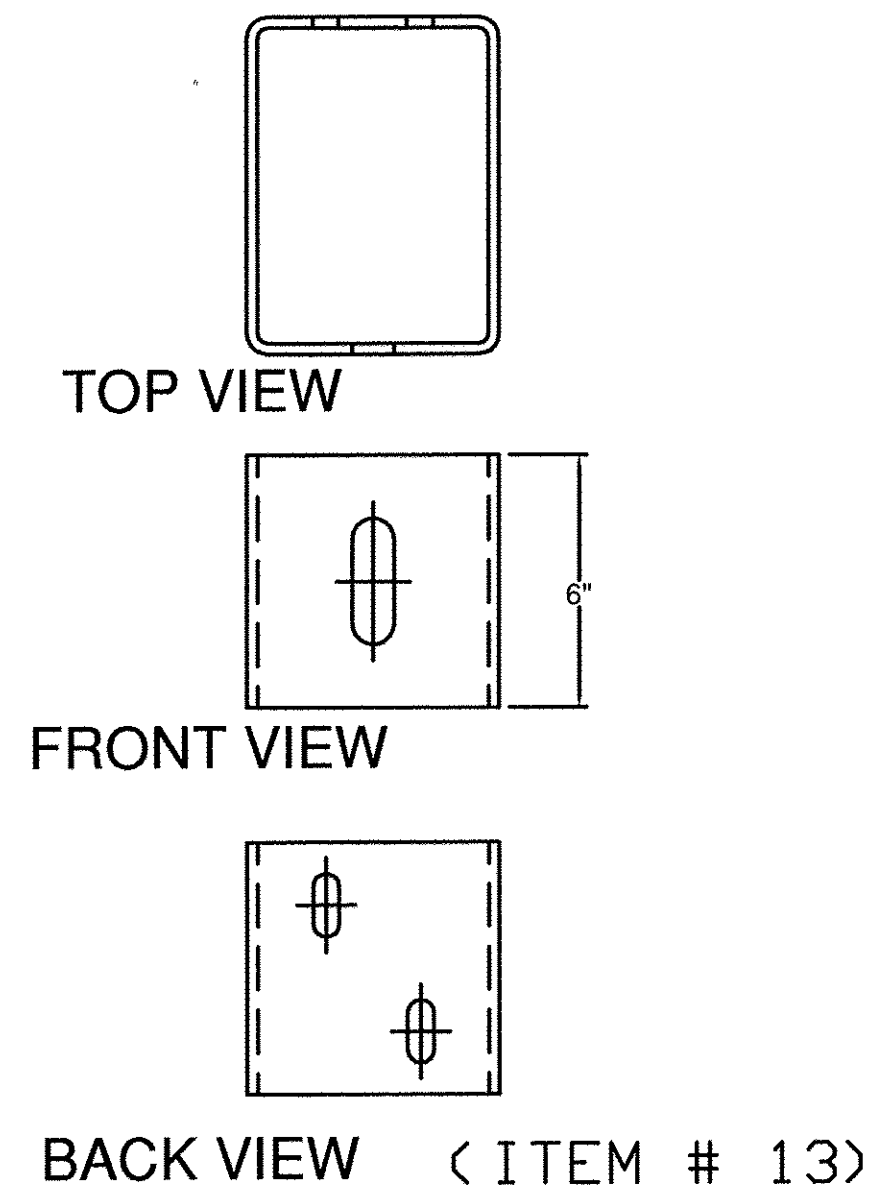
SPLICE TUBE - EXPANSION (ITEM # 8)



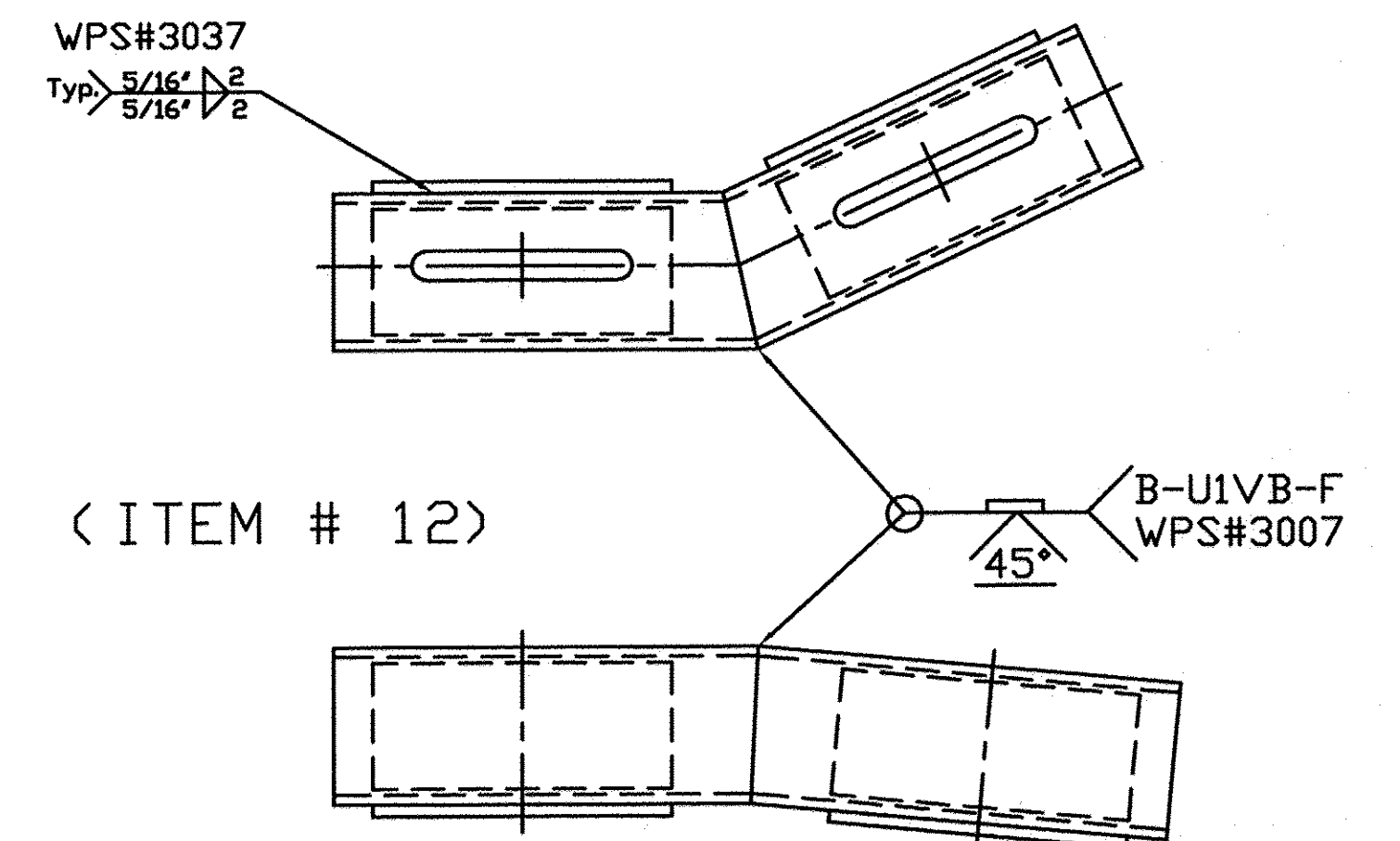
(ITEM # 10)



(ITEM # 11)



BACK VIEW (ITEM # 13)



(ITEM # 12)

ITEM #: 900.620

GEN CONTR: F.R. Lafayette - Warren

SHEET 3 OF 3

APPROVED BY:

Vermont Agency of Transportation

**RECEIVED**

CK'D BY M. LONGSTREET OK'D BY MCL

January 29, 2013

RESUBMIT NO Approved  
BY J. LACROIX DATE 01-30-2013

**Galvanized 2-Rail Box Beam Guardrail Approach Section**

WARREN BR# 013-4 (14) VERMONT ROUTE 100 (MINOR ARTERIAL) - BR NO. 173  
TOWN OF WARREN, WASHINGTON COUNTY, VT

R NO.	DATE	DESCRIPTION	BY	R NO.	DATE	DESCRIPTION	BY
E 1	1/28/13	REVISED PER 12/12/12 MARK-UP	E.P.				
DRAWN		D.L.	12/05/12	CHECKED		E.P.	12/05/12
APPROVED		M.V.		SCALE		SCHMATIC	
DRAWING NO.		FR Lafayette - WARREN-A					



**ELDERLEE, INC.**  
OAKS CORNERS, NEW YORK 14518  
E-Mail: dlong@elderlee.com  
Tel: 315-789-6670 Fax: 315-789-6615



CERTIFIED FABRICATOR  
DRAWN D.L. 12/05/12  
CHECKED E.P. 12/05/12  
APPROVED M.V.  
SCALE SCHMATIC  
DRAWING NO. FR Lafayette - WARREN-A