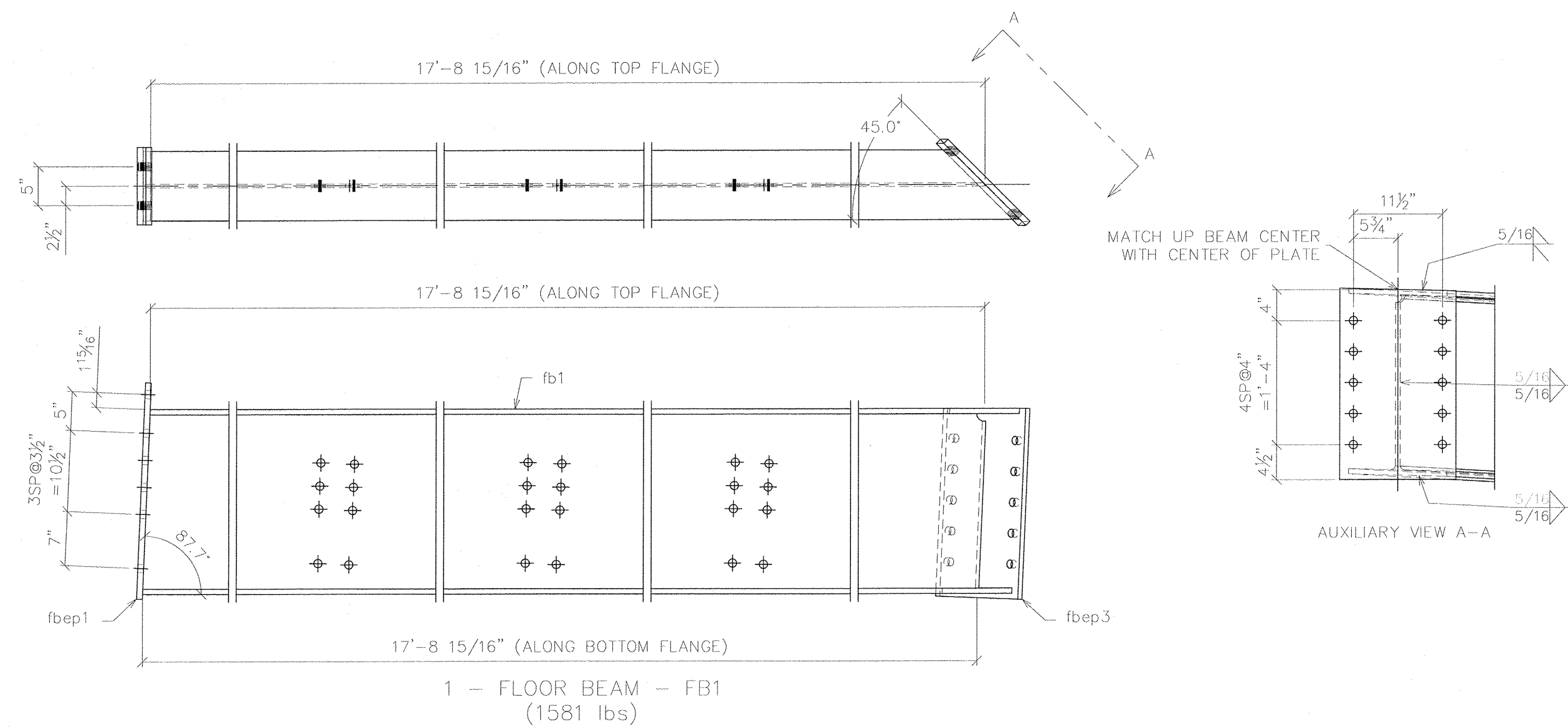
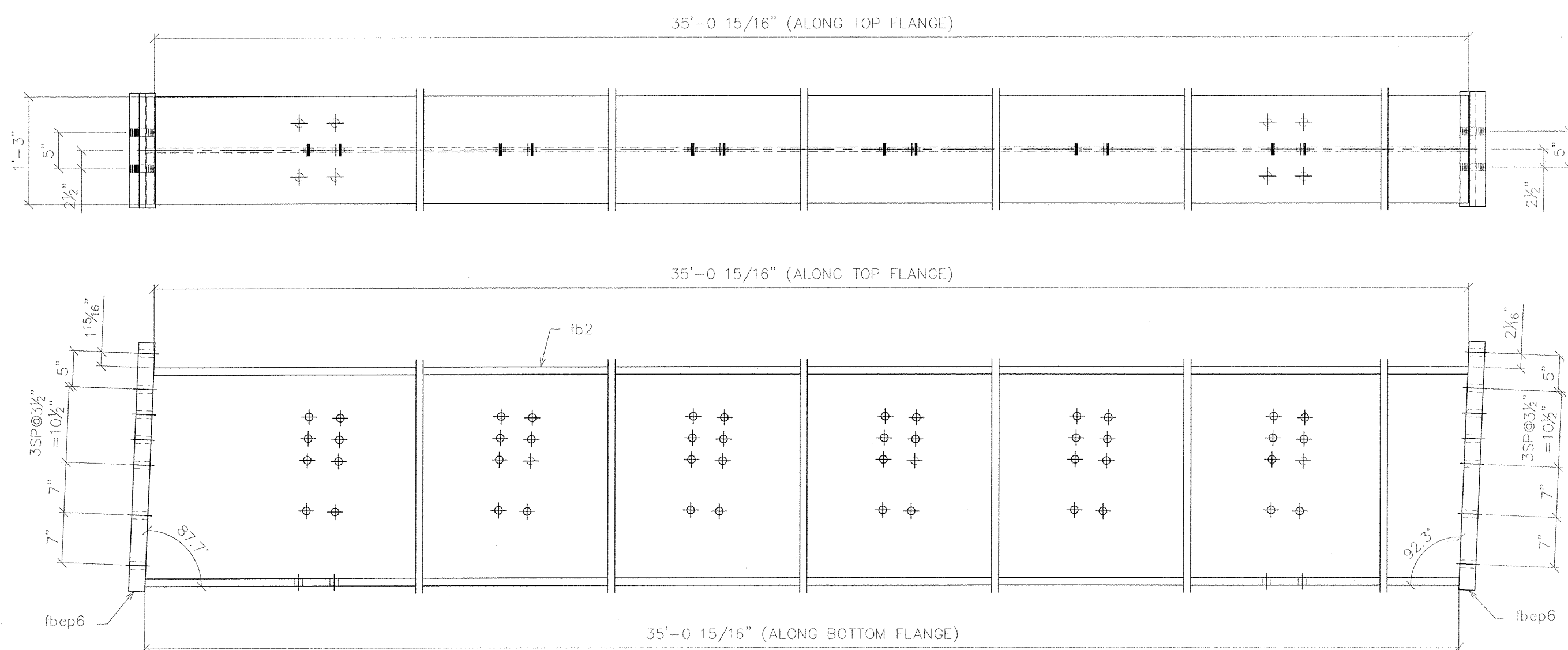


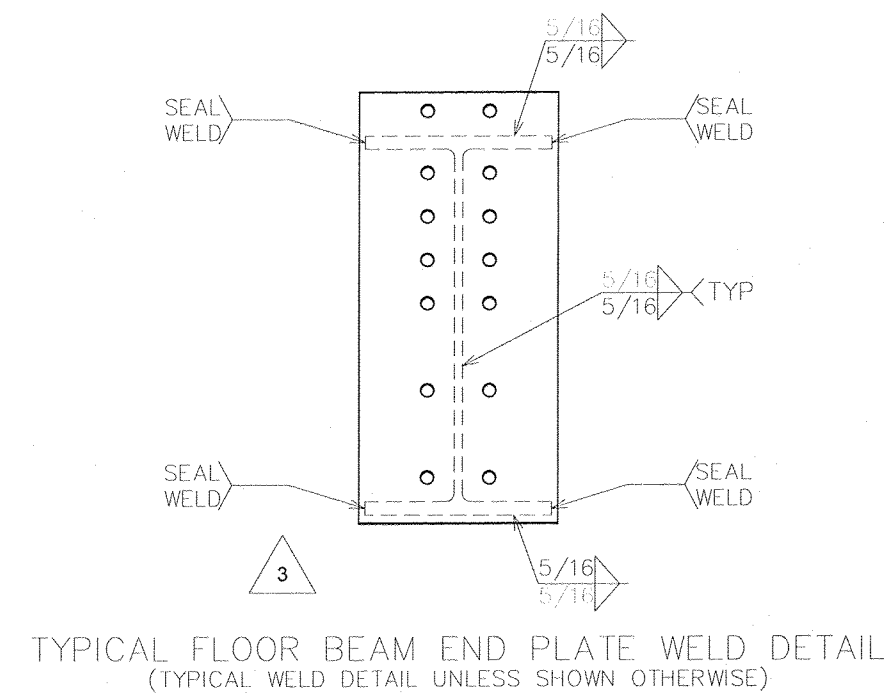
DATE PLOTTED: June 24, 2013



1 - FLOOR BEAM - FB1
(1581 lbs)



1 - FLOOR BEAM - FB2
(6587 lbs)



TYPICAL FLOOR BEAM END PLATE WELD DETAIL
(TYPICAL WELD DETAIL UNLESS SHOWN OTHERWISE)

RECORD DWGS
AS FABRICATED

6/24/13

S:\03\ENVIRONMENT\1622-Cash Trans-1305 x 35-Warren.VT over Mar River\Drawings\1622 AS-BUILT 6-24-13.dwg

SYMBOLS & ABBREVIATIONS

ES: EACH SIDE	NS: NEAR SIDE
EQ: EQUAL	FS: FAR SIDE
CL: CENTERLINE	WP: WORK POINT
REF: REFERENCE	GA: GAUGE
CHK: CHECK	ID: INSIDE DIAMETER
OO: OUT TO OUT	OD: OUTSIDE DIAMETER
CC: CENTER TO CENTER	BRG: BEARING
FF: FACE TO FACE	UNO: UNLESS NOTED OTHERWISE
DIA: DIAMETER	ABUT: ABUTMENT
R: RADIUS	T&B: TOP & BOTTOM

DIST. BY: **CONTECH** CONSTRUCTION PRODUCTS INC.
www.contech-cpi.com

FAB. BY: **U.S. BRIDGE** BRIDGING AMERICA SINCE 1936

SUBMITTAL LOG	DATE	NO.	DATE	REVISIONS:	BY:
INITIAL SUBMITTAL	12/18/12	1	5/15/13	FLOOR BEAM END PLATES WAS 1" THK	TLB
RESUBMITTAL NO. 2	2/5/13	2	5/15/13	ADDED 2" DIA. RAT HOLES IN fb1 & fb9	TLB
CUSTOMER APPROVAL	2/13/13	3	5/15/13	CHANGED WELD WAS 3/8" ALL AROUND	TLB
SHOP REVIEW	-	4	5/15/13	CHANGED BOLT PATTERN	TLB
PRE FAB MTG	-	5	5/15/13	WAS 2" EDGE DISTANCE	TLB
APPROVED FOR FAB	2/28/13	6	6/3/13	DIMENSIONAL ERRORS	TLB

00000001.jpg

TOWN OF WARREN, VT
COUNTY OF WASHINGTON
BRIDGE NO. 173 REPLACEMENT
WARREN, VT

DESIGN: SAF	DRAW: TLB	REVIEW: SAF/RLI	CHECK: CJG
ITEM NO.:	PROJECT NO.:	BRIDGE NO.:	STRUCTURAL FILE NO.:
	BRF 013-4 (14)	173	
USB JOB#	51622	8	58
			TOTAL