

DATE PLOTTED: June 24, 2013

S:\DESIGN\PROJECTS\1622-Galv\Truss-1388 x 35\Warren_VT over Mad River\Drawings\1622 AS-BUILT 6-24-13.dwg

MATERIAL SCHEDULE

PC	QTY	PN	FAMILY	PROFILE	LENGTH	GRADE	WGT	EACH	TOTAL
PART NO.	TLC	QTY=1	FINISH=GALV	TOTAL WGT=21911.72(lb)				(lb)	(lb)
1	bc4	BOTTOM CHORD	W16X76	43'-7 1/2"	STEEL A572-FCM	3315.3	3315.3		
1	bc5	BOTTOM CHORD	W16X76	43'-7 1/2"	STEEL A572-FCM	3315.3	3315.3		
1	d9	DIAGONAL BRACE	W14X43	11'-11 1/16"	STEEL A572-50	514.8	514.8		
1	d10	DIAGONAL BRACE	W14X43	11'-8 5/8"	STEEL A572-FCM	503.9	503.9		
1	d11	DIAGONAL BRACE	W14X61	11'-9 7/16"	STEEL A572-50	719.1	719.1		
1	d12	DIAGONAL BRACE	W14X61	10'-3 5/16"	STEEL A572-FCM	626.9	626.9		
2	i13	LOWER GUSSET	Plate 5/8"x3"-1 5/8"	4'-5 1/8"	STEEL A572-CVN	321.3	642.7		
2	i15	LOWER GUSSET	Plate 5/8"x3"-5 1/16"	5'-3 3/8"	STEEL A572-CVN	413.3	826.7		
2	i17	LOWER GUSSET	Plate 5/8"x4"-11 9/16"	3'-6 1/16"	STEEL A572-CVN	365.3	730.5		
1	shoe2	SHOE	W14X90	3'-7 1/4"	STEEL A572-50	324.4	324.4		
2	shp1	SHIM PLATE	Plate 1/2"x7"	8"	STEEL A572-50	7.4	14.9		
2	shp2	SHIM PLATE	Plate 3/4"x8"	10 1/2"	STEEL A572-50	16.8	33.5		
2	shp3	SHIM PLATE	Plate 1/2"x8"	10 1/2"	STEEL A572-50	11.2	22.4		
2	shp6	SHIM PLATE	Plate 7/8"x8"	1'-5"	STEEL A572-50	31.6	63.2		
2	shp7	SHIM PLATE	Plate 5/8"x10"	1'-7"	STEEL A572-50	31.8	63.7		
2	shp8	SHIM PLATE	Plate 3/4"x8"	1'-7"	STEEL A572-50	30.1	60.2		
2	shp9	SHIM PLATE	Plate 1/4"x8"	2'-3 9/16"	STEEL A572-50	14.9	29.8		
2	shp10	SHIM PLATE	Plate 3/8"x10"	2'-4"	STEEL A572-50	28.1	56.2		
2	shp12	SHIM PLATE	Plate 3/8"x1"-2 5/8"	2'-6 3/4"	STEEL A572-50	45.8	91.6		
1	shp14	SHIM PLATE	Plate 1/4"x1"-3 5/8"	2'-7"	STEEL A572-50	33.1	33.1		
2	shp15	SHIM PLATE	Plate 1/4"x1"-2 1/2"	2'-8 7/16"	STEEL A572-50	29.4	58.8		
2	shp17	SHIM PLATE	Plate 1/8"x1"-0 1/2"	2'-10"	STEEL A572-50	14.4	28.8		
2	shp19	SHIM PLATE	Plate 1/8"x1"-0 1/2"	5'-3 3/8"	STEEL A572-50	27.4	27.4		

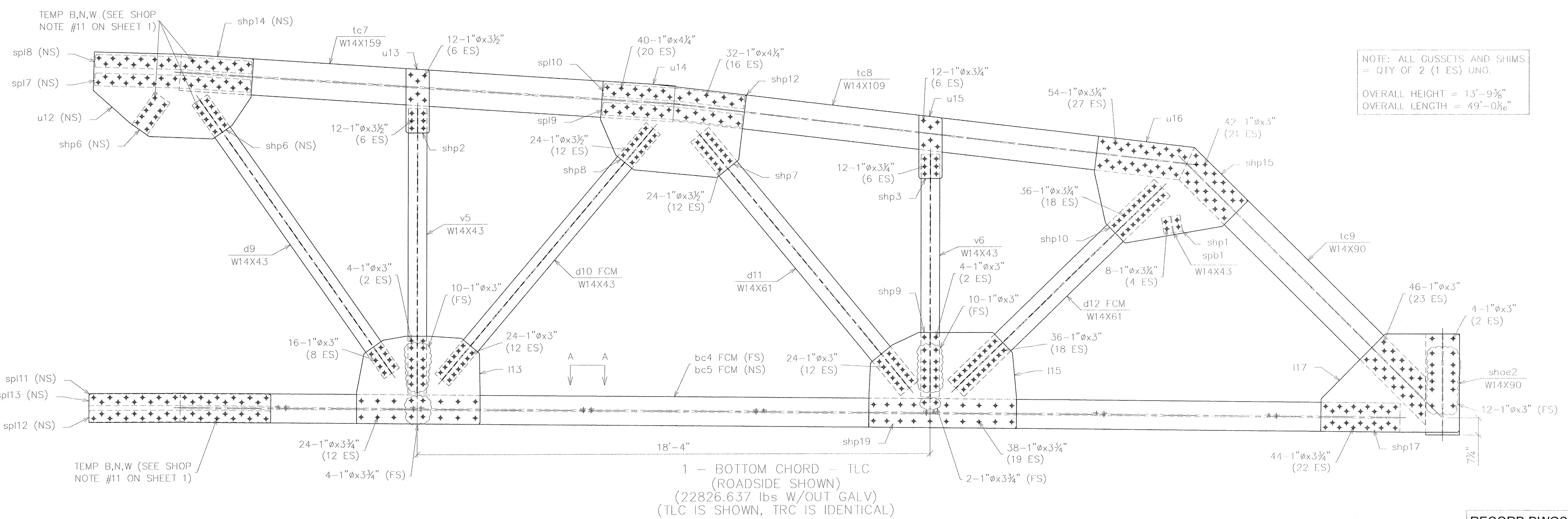
7	sp1	SPACER PLATE	Plate 1/2"x8 11/16"	5 3/4"	STEEL A572-50	6.6	46.0		
1	spb1	SPACER BEAM	W14X43	7"	STEEL A572-50	25.1	25.1		
1	sp17	SPLICE PLATE	Plate 3/4"x6 5/8"	5'-7"	STEEL A572-50	74.2	74.2		
1	sp18	SPLICE PLATE	Plate 3/4"x6 5/8"	5'-7 5/16"	STEEL A572-50	74.5	74.5		
2	sp19	SPLICE PLATE	Plate 3/4"x7 1/16"	5'-0 1/4"	STEEL A572-50	67.0	134.0		
2	sp110	SPLICE PLATE	Plate 3/4"x7 1/16"	5'-0 5/8"	STEEL A572-50	67.5	135.0		
1	sp111	SPLICE PLATE	Plate 1"x1"-0 7/8"	6'-6 1/16"	STEEL A572-50	265.6	265.6		
1	sp112	SPLICE PLATE	Plate 1"x5 3/8"	6'-6"	STEEL A572-50	105.0	105.0		
1	sp113	SPLICE PLATE	Plate 1"x5 3/8"	6'-6 1/16"	STEEL A572-50	105.1	105.1		
1	tc7	TOP CHORD	W14X159	17'-8 5/16"	STEEL A572-50	2813.0	2813.0		
1	tc8	TOP CHORD	W14X109	18'-8 3/8"	STEEL A572-50	2038.0	2038.0		
1	tc9	TOP CHORD	W14X90	12'-10 1/4"	STEEL A572-50	1157.0	1157.0		
1	u12	UPPER GUSSET	Plate 5/8"x3"-0 1/16"	5'-8 5/16"	STEEL A572-50	358.6	358.6		
2	u13	UPPER GUSSET	Plate 5/8"x10"	2'-3 3/4"	STEEL A572-50	46.7	93.3		
2	u14	UPPER GUSSET	Plate 5/8"x3"-1 1/2"	5'-1 3/4"	STEEL A572-50	362.2	724.4		
2	u15	UPPER GUSSET	Plate 5/8"x10"	2'-3 5/16"	STEEL A572-50	45.4	90.8		
1	u16	UPPER GUSSET	Plate 5/8"x3"-11 1/4"	5'-2 1/2"	STEEL A572-50	365.2	730.4		
1	v5	VERTICAL BRACE	W14X43	10'-2 1/8"	STEEL A572-50	437.6	437.6		
1	v6	VERTICAL BRACE	W14X43	8'-8 3/16"	STEEL A572-50	373.3	373.3		
							21911.72		
							21911.72		

BOLT CHART (SHOP)

DIAMETER	LENGTH	DESCRIPTION	REMARKS	QTY	CLASS	UNIT WGT	NUTS	WASHERS
							QTY	QTY
1"	3"			232	A325-1	1.40	232	464
1"	3 1/4"			150	A325-1	1.46	150	300
1"	3 1/2"			72	A325-1	1.52	72	144
1"	3 3/4"			112	A325-1	1.57	112	224
1"	4 1/4"			72	A325-1	1.68	72	144

NOTE QUANTITIES SHOWN FOR FLAT WASHERS INCLUDE D11

NOTE: ALL BOLTS REQUIRE (1) FLAT WASHER, (1) D11 WASHER, AND (1) NUT. ALL BOLTS ARE A325-1 UNO.



RECORD DWGS
AS FABRICATED
6/24/13

SYMBOLS & ABBREVIATIONS

ES: EACH SIDE	NS: NEAR SIDE
EQ: EQUAL	FS: FAR SIDE
CL: CENTERLINE	WP: WORK POINT
REF: REFERENCE	GA: GAUGE
CHK: CHECK	ID: INSIDE DIAMETER
O/C: OUT TO OUT	OD: OUTSIDE DIAMETER
C/C: CENTER TO CENTER	BRG: BEARING
F/F: FACE TO FACE	TYP: TYPICAL
DIA: DIAMETER	UNO: UNLESS NOTED OTHERWISE
R: RADIUS	ABUT: ABUTMENT
	T&B: TOP & BOTTOM

DIST. BY: **CONTECH** CONSTRUCTION PRODUCTS INC.
FAB. BY: **U.S. BRIDGE** BRIDGING AMERICA SINCE 1934

SUBMITTAL LOG	DATE	NO.	DATE	REVISIONS:	BY:
INITIAL SUBMITTAL	12/18/12	1	5/15/13	FLOOR BEAM END PLATES WAS 1" THK	TLB
RESUBMITTAL NO. 2	2/5/13	2	5/15/13	ADDED 2" DIA. RAT HOLES IN I-b1 & I-b9	TLB
CUSTOMER APPROVAL	2/13/13	3	5/15/13	CHANGED WELD WAS 3/8" ALL AROUND	TLB
SHOP REVIEW	-	4	5/15/13	CHANGED BOLT PATTERN	TLB
PRE FAB MTG	-	5	5/15/13	WAS 2" EDGE DISTANCE	TLB
APPROVED FOR FAB	2/28/13	6	6/3/13	DIMENSIONAL ERRORS	TLB

00000001.jpg

TOWN OF WARREN, VT
COUNTY OF WASHINGTON
BRIDGE NO.173 REPLACEMENT
WARREN, VT

ITEM NO.: PROJECT NO.: BRF 013-4 (14)
REFERENCE NO.: BRIDGE NO.: 173
STRUCTURAL FILE NO.:

DESIGN: SAF DRAW: TLB REVIEW: SAF/RLI CHECK: CJG
SHOP DETAILS **TRUSS ASSEMBLY** USB JOB# 51622

SHEET **7c** OF **58**