

DATE PLOTTED: June 24, 2013

S:\08\VERMONT\01622-Cali-Truss-138' x 35'-Warren, VT over Mad River\Drawings\01622 AS-BUILT 6-24-13.dwg

MATERIAL SCHEDULE							
PC	QTY	PN	FAMILY	PROFILE	LENGTH	GRADE	WGT
				TOTAL WGT=28127.38(lb)			
PART NO.=TLB	QTY=1	FINISH=CALV			EACH (lb)	TOTAL (lb)	
2	bc3		BOTTOM CHORD	W16x76	50'-10 3/4"	STEEL A572-FCM	3868.1
1	d5		DIAGONAL BRACE	W14x43	12'-0 3/8"	STEEL A572-FCM	517.3
2	d6		DIAGONAL BRACE	W14x43	12'-3 5/8"	STEEL A572-FCM	529.1
2	d7		DIAGONAL BRACE	W14x43	12'-4 7/16"	STEEL A572-FCM	531.9
1	d8		DIAGONAL BRACE	W14x43	12'-0 1/4"	STEEL A572-FCM	517.0
2	l7		LOWER GUSSET	Plate 5/8"x3'-1 1/4"	4'-4"	STEEL A572-CVN	306.1
2	l9		LOWER GUSSET	Plate 5/8"x3'-1 1/4"	4'-4"	STEEL A572-CVN	308.0
2	l11		LOWER GUSSET	Plate 5/8"x3'-1 1/4"	4'-4"	STEEL A572-CVN	306.1
6	shp4		SHIM PLATE	Plate 7/8"x8"	10 1/2"	STEEL A572-50	19.5
4	shp5		SHIM PLATE	Plate 7/8"x8"	1'-4 5/8"	STEEL A572-50	30.8
8	shp6		SHIM PLATE	Plate 7/8"x8"	1'-5"	STEEL A572-50	31.6
2	shp14		SHIM PLATE	Plate 1/4"x1'-3 5/8"	2'-7"	STEEL A572-50	33.1
9	sp1		SPACER PLATE	Plate 1/2"x8 11/16"	5 3/4"	STEEL A572-50	6.6
1	sp13		SPUCE PLATE	Plate 3/4"x6 11/16"	5'-7"	STEEL A572-50	74.2
1	sp14		SPUCE PLATE	Plate 3/4"x6 11/16"	5'-7 5/16"	STEEL A572-50	74.5
4	sp15		SPUCE PLATE	Plate 3/4"x6 9/16"	6'-1"	STEEL A572-50	80.8
4	sp16		SPUCE PLATE	Plate 3/4"x6 9/16"	6'-1 1/4"	STEEL A572-50	81.1
1	sp17		SPUCE PLATE	Plate 3/4"x6 5/8"	5'-7"	STEEL A572-50	74.2
1	sp18		SPUCE PLATE	Plate 3/4"x6 5/8"	5'-7 5/16"	STEEL A572-50	74.5
1	sp111		SPUCE PLATE	Plate 1"x1'-0 7/8"	6'-6 1/16"	STEEL A572-FCM	265.6
1	sp112		SPUCE PLATE	Plate 1"x5 3/8"	6'-6"	STEEL A572-FCM	105.0
1	sp113		SPUCE PLATE	Plate 1"x5 3/8"	6'-6 1/16"	STEEL A572-FCM	105.1
1	sp114		SPUCE PLATE	Plate 1"x1'-0 7/8"	6'-1 1/16"	STEEL A572-FCM	247.8
1	sp115		SPUCE PLATE	Plate 1"x5 5/16"	6'-1"	STEEL A572-FCM	97.9
1	sp116		SPUCE PLATE	Plate 1"x5 5/16"	6'-1 1/16"	STEEL A572-FCM	98.0
1	tc4		TOP CHORD	W14x176	17'-0 3/8"	STEEL A572-50	2997.9
1	tc5		TOP CHORD	W14x176	16'-11 11/16"	STEEL A572-50	2987.1
1	tc6		TOP CHORD	W14x176	17'-0 1/4"	STEEL A572-50	2996.0
1	u6		UPPER GUSSET	Plate 5/8"x3'-0 1/8"	5'-8 5/8"	STEEL A572-50	358.6
4	u7		UPPER GUSSET	Plate 5/8"x10"	2'-3 3/8"	STEEL A572-50	46.3
4	u8		UPPER GUSSET	Plate 5/8"x2'-11 3/4"	6'-2 1/4"	STEEL A572-50	378.7
2	u9		UPPER GUSSET	Plate 5/8"x10"	2'-3 1/8"	STEEL A572-50	46.1
1	u12		UPPER GUSSET	Plate 5/8"x3'-0 1/16"	5'-8 5/16"	STEEL A572-50	358.6
2	v3		VERTICAL BRACE	W14x43	10'-11 1/16"	STEEL A572-50	469.7
1	v4		VERTICAL BRACE	W14x43	11'-2 3/16"	STEEL A572-50	480.8
Total element mass (lb)						28127.38	28127.38

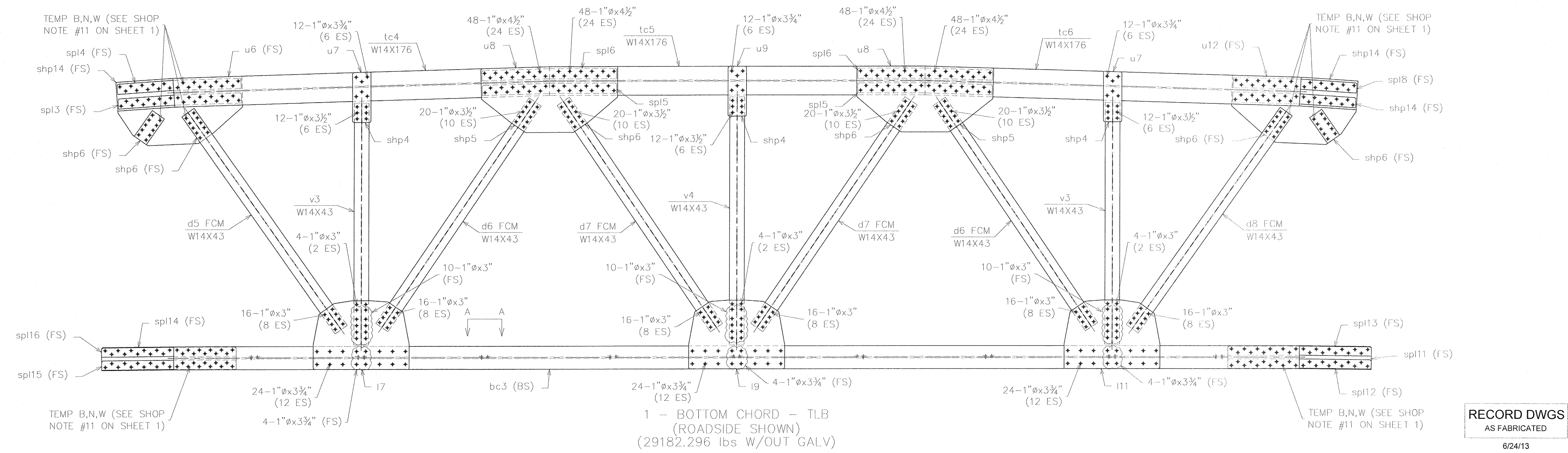
BOLT CHART (SHOP)									
DIAMETER	LENGTH	DESCRIPTION	REMARKS	BOLTS		NUTS		WASHERS	
				QTY	CLASS	UNIT WGT	QTY	QTY	
1"	3"			138	A325-1	1.40	138		276
1"	3 1/4"			36	A325-1	1.46	36		72
1"	3 1/2"			116	A325-1	1.52	116		232
1"	3 3/4"			120	A325-1	1.57	120		240
1"	4 1/2"			192	A325-1	1.74	192		384

NOTE QUANTITIES SHOWN FOR FLAT WASHERS INCLUDE DTI

NOTE: ALL BOLTS REQUIRE (1) FLAT WASHER, (1) DTI WASHER, AND (1) NUT. ALL BOLTS ARE A325-1 UNO.

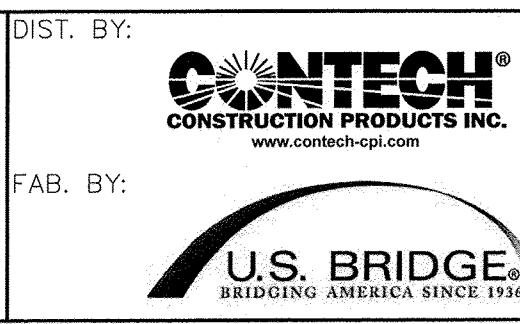
NOTE: ALL GUSSETS AND SHIMS = QTY OF 2 (1-ES) UNO.

OVERALL HEIGHT = 13'-8 3/4"  
OVERALL LENGTH = 57'-5 1/2"



RECORD DWGS  
AS FABRICATED  
6/24/13

**SYMBOLS & ABBREVIATIONS**  
 ES: EACH SIDE  
 EQ: EQUAL  
 CL: CENTERLINE  
 REF: REFERENCE  
 CHK: CHECK  
 O/C: OUT TO OUT  
 C/C: CENTER TO CENTER  
 F/V: FACE TO FACE  
 D/A: DIAMETER  
 R: RADIUS  
 NS: NEAR SIDE  
 FS: FAR SIDE  
 WP: WORK POINT  
 GA: GAUGE  
 ID: INSIDE DIAMETER  
 OD: OUTSIDE DIAMETER  
 BRG: BEARING  
 TYP: TYPICAL  
 UNO: UNLESS NOTED OTHERWISE  
 A/B: ANGLE  
 T&B: TOP & BOTTOM



SUBMITTAL LOG	DATE	NO.	DATE	REVISIONS	BY:
INITIAL SUBMITTAL	12/18/12	1	5/15/13	FLOOR BEAM END PLATES WAS 1" THK	TLB
RESUBMITTAL NO. 2	2/5/13	2	5/15/13	ADDED 2" DIA. RAT HOLES IN t61 & t69	TLB
CUSTOMER APPROVAL	2/13/13	3	5/15/13	CHANGED WELD WAS 3/8" ALL AROUND	TLB
SHOP REVIEW	-	-	5/15/13	CHANGED BOLT PATTERN	TLB
PRE FAB MTG	-	-	5/15/13	WAS 2" EDGE DISTANCE	TLB
APPROVED FOR FAB	2/28/13	4	6/3/13	DIMENSIONAL ERRORS	TLB

TOWN OF WARREN, VT  
 COUNTY OF WASHINGTON  
 BRIDGE NO. 173 REPLACEMENT  
 WARREN, VT  
 00000001.jpg

ITEM NO.:  
 PROJECT NO.: BRF 013-4 (14)  
 REFERENCE NO.:  
 BRIDGE NO.: 173  
 STRUCTURAL FILE NO.:  
 DESIGN: SAF DRAW: TLB REVIEW: SAF/RLI CHECK: C/JG  
 SHOP DETAILS TRUSS ASSEMBLY USB JOB# 51622 SHEET 7b 58