

DATE PLOTTED: June 24, 2013

MATERIAL SCHEDULE									
PC QTY	PN	FAMILY	PROFILE	LENGTH	GRADE	WGT			
			TOTAL WGT=21636.20(lb)			EACH (lb)	TOTAL (lb)		
1	bcl	BOTTOM CHORD	W16X76	40'-11 11/16"	STEEL A572-FCM	3114.2	3114.2		
1	bc2	BOTTOM CHORD	W16X76	40'-11 11/16"	STEEL A572-FCM	3114.2	3114.2		
1	d1	DIAGONAL BRACE	W14X61	9'-10 5/16"	STEEL A572-FCM	601.4	601.4		
1	d2	DIAGONAL BRACE	W14X61	11'-0 7/8"	STEEL A572-50	675.3	675.3		
1	d3	DIAGONAL BRACE	W14X43	11'-3 1/16"	STEEL A572-FCM	484.0	484.0		
1	d4	DIAGONAL BRACE	W14X43	11'-11 5/8"	STEEL A572-50	514.6	514.6		
2	l3	LOWER GUSSET	Plate 5/8"x3'-6 1/16"	5'-3 13/16"	STEEL A572-CVN	436.3	872.5		
2	l5	LOWER GUSSET	Plate 5/8"x3'-2 5/8"	4'-5 1/8"	STEEL A572-CVN	328.3	656.6		
1	llc	LOWER GUSSET	Plate 5/8"x6'-6 5/8"	4'-11 3/8"	STEEL A572-CVN	444.8	444.8		
1	llr	LOWER GUSSET	Plate 5/8"x6'-11 5/8"	5'-4 3/8"	STEEL A572-CVN	498.2	498.2		
1	shoe1	SHOE	W14X90	3'-0 1/2"	STEEL A572-50	273.7	273.7		
1	shoe3	SHOE	W14X90	3'-8 1/2"	STEEL A572-50	333.7	333.7		
2	shp1	SHIM PLATE	Plate 1/2"x2"	8"	STEEL A572-50	7.4	14.9		
2	shp2	SHIM PLATE	Plate 3/4"x8"	10 1/2"	STEEL A572-50	16.8	33.5		
2	shp3	SHIM PLATE	Plate 1/2"x8"	10 1/2"	STEEL A572-50	11.2	22.3		
2	shp6	SHIM PLATE	Plate 7/8"x8"	1'-5"	STEEL A572-50	31.6	63.2		
2	shp7	SHIM PLATE	Plate 5/8"x10"	1'-7"	STEEL A572-50	31.8	63.7		
2	shp8	SHIM PLATE	Plate 3/4"x8"	1'-7"	STEEL A572-50	30.1	60.2		
2	shp10	SHIM PLATE	Plate 3/8"x10"	2'-4"	STEEL A572-50	28.1	56.2		
2	shp11	SHIM PLATE	Plate 1/4"x8"	2'-4 9/16"	STEEL A572-50	15.5	30.9		
2	shp13	SHIM PLATE	Plate 3/8"x1'-2 5/8"	2'-6 13/16"	STEEL A572-50	45.8	91.6		
1	shp14	SHIM PLATE	Plate 1/4"x1'-3 5/8"	3'-7"	STEEL A572-50	33.1	33.1		
2	shp16	SHIM PLATE	Plate 1/4"x1'-2 1/2"	2'-8 5/8"	STEEL A572-50	29.5	58.9		
2	shp17	SHIM PLATE	Plate 1/8"x1'-0 1/2"	2'-10"	STEEL A572-50	14.4	28.8		
2	shp20	SHIM PLATE	Plate 1/8"x1'-0 1/2"	5'-3 11/16"	STEEL A572-50	27.6	55.2		
7	sp1	SPACER PLATE	Plate 1/2"x8 11/16"	5 3/4"	STEEL A572-50	6.6	46.0		
1	spb1	SPACER BEAM	W14X43	7"	STEEL A572-50	25.1	25.1		
2	sp11	SPLICE PLATE	Plate 3/4"x7 1/4"	5'-0 1/4"	STEEL A572-50	67.0	134.0		
2	sp12	SPLICE PLATE	Plate 3/4"x7 1/4"	5'-0 11/16"	STEEL A572-50	67.5	135.1		
1	sp13	SPLICE PLATE	Plate 3/4"x6 11/16"	5'-7"	STEEL A572-50	74.2	74.2		
1	sp14	SPLICE PLATE	Plate 3/4"x6 11/16"	5'-7 5/16"	STEEL A572-50	74.5	74.5		
1	sp14	SPLICE PLATE	Plate 1"x1'-0 7/8"	6'-1 1/16"	STEEL A572-FCM	247.8	247.8		
1	sp15	SPLICE PLATE	Plate 1"x5 5/16"	6'-1"	STEEL A572-FCM	97.9	97.9		
1	sp16	SPLICE PLATE	Plate 1"x5 5/16"	6'-1 1/16"	STEEL A572-FCM	98.0	98.0		

1	tc1	TOP CHORD	W14X90	12'-4 7/8"	STEEL A572-50	1116.6	1116.6
1	tc2	TOP CHORD	W14X109	17'-4 5/16"	STEEL A572-50	1892.0	1892.0
1	tc3	TOP CHORD	W14X159	17'-0 1/16"	STEEL A572-50	2703.6	2703.6
2	u2	UPPER GUSSET	Plate 5/8"x3'-8 5/8"	5'-6 3/16"	STEEL A572-50	363.4	726.7
2	u3	UPPER GUSSET	Plate 5/8"x10"	2'-3 3/8"	STEEL A572-50	45.5	91.0
2	u4	UPPER GUSSET	Plate 5/8"x3'-11 1/16"	5'-1 13/16"	STEEL A572-50	357.9	715.8
2	u5	UPPER GUSSET	Plate 5/8"x10"	2'-3 13/16"	STEEL A572-50	46.7	93.4
1	u6	UPPER GUSSET	Plate 5/8"x3'-0 1/8"	5'-8 3/8"	STEEL A572-50	358.6	358.6
1	v1	VERTICAL BRACE	W14X43	8'-8 1/8"	STEEL A572-50	373.0	373.0
1	v2	VERTICAL BRACE	W14X43	10'-1 7/8"	STEEL A572-50	436.8	436.8
						21636.20	
Total element mass (lb)						21636.20	

BOLT CHART (SHOP)							
DIAMETER	LENGTH	DESCRIPTION	REMARKS	QTY	BOLTS CLASS	UNIT WGT	NUTS WASHERS QTY QTY
1"	3"			243	A325-1	1.40	243 486
1"	3 1/4"			150	A325-1	1.46	150 300
1"	3 1/2"			72	A325-1	1.52	72 144
1"	3 3/4"			108	A325-1	1.57	108 216
1"	4 1/4"			72	A325-1	1.68	72 144

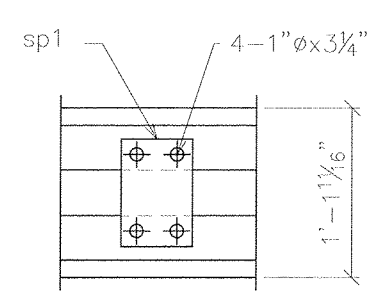
NOTE: QUANTITIES SHOWN FOR FLAT WASHERS INCLUDE DII

NOTE: ALL BOLTS REQUIRE (1) FLAT WASHER, (1) DII WASHER, AND (1) NUT. ALL BOLTS ARE A325-1 UNO.

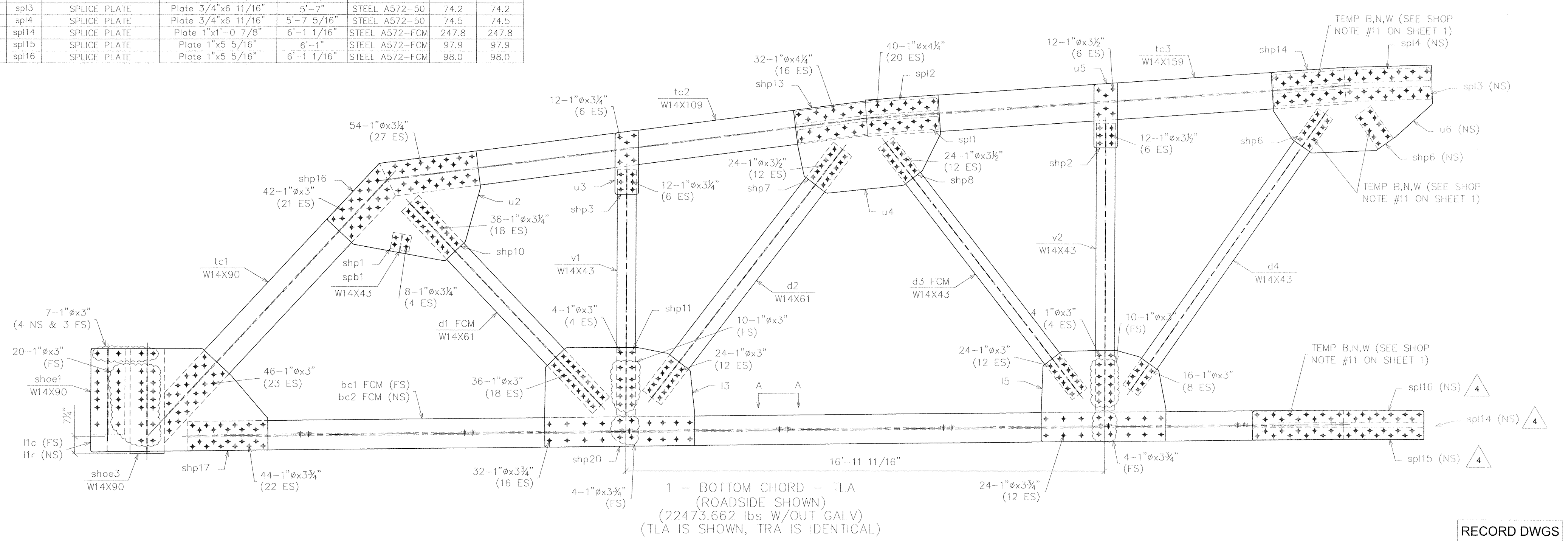
NOTE: ALL GUSSETS AND SHIMS = QTY OF 2 (1 ES) UNO.

OVERALL HEIGHT = 13'-9 3/4"

OVERALL LENGTH = 47'-8 3/4"



SECTION A-A (TYPICAL LAYOUT)



SYMBOLS & ABBREVIATIONS	
ES: EACH SIDE	NS: NEAR SIDE
EQ: EQUAL	FS: FAR SIDE
C: CENTERLINE	WP: WORK POINT
REF: REFERENCE	GA: GAUGE
CHK: CHECK	ID: INSIDE DIAMETER
O/O: OUT TO OUT	OD: OUTSIDE DIAMETER
C/C: CENTER TO CENTER	BRG: BEARING
F/P: FACE TO FACE	TYP: TYPICAL
DIA: DIAMETER	UNO: UNLESS NOTED OTHERWISE
R: RADIUS	ABT: ABUTMENT
	T&B: TOP & BOTTOM

DIST. BY: **CONTECH CONSTRUCTION PRODUCTS INC.**

FAB. BY: **U.S. BRIDGE BRIDGING AMERICA SINCE 1936**

SUBMITTAL LOG	DATE	NO.	DATE	REVISIONS	BY:
INITIAL SUBMITTAL	12/18/12	1	5/15/13	FLOOR BEAM END PLATES WAS 1" THK	TLB
RESUBMITTAL NO. 2	2/9/13	2	5/15/13	ADDED 2" DIA. RAT HOLES IN I61 & I69	TLB
CUSTOMER APPROVAL	2/13/13	3	5/15/13	CHANGED WELD WAS 5/16" ALL AROUND	TLB
SHOP REVIEW	-	4	5/15/13	CHANGED BOLT PATTERN	TLB
PRE FAB MTG	-	5	5/15/13	WAS 2" EDGE DISTANCE	TLB
APPROVED FOR FAB	2/28/13	6	6/3/13	DIMENSIONAL ERRORS	TLB

00000001.jpg

TOWN OF WARREN, VT
COUNTY OF WASHINGTON
BRIDGE NO.173 REPLACEMENT
WARREN, VT

DESIGN: SAF DRAW: TLB REVIEW: SAF/RLI CHECK: CJG

ITEM NO.:
PROJECT NO.: BRF 013-4 (14)
REFERENCE NO.:
BRIDGE NO.: 173
STRUCTURAL FILE NO.:

SHOP DETAILS TRUSS ASSEMBLY USB JOB# 51622

6/24/13

7a 58