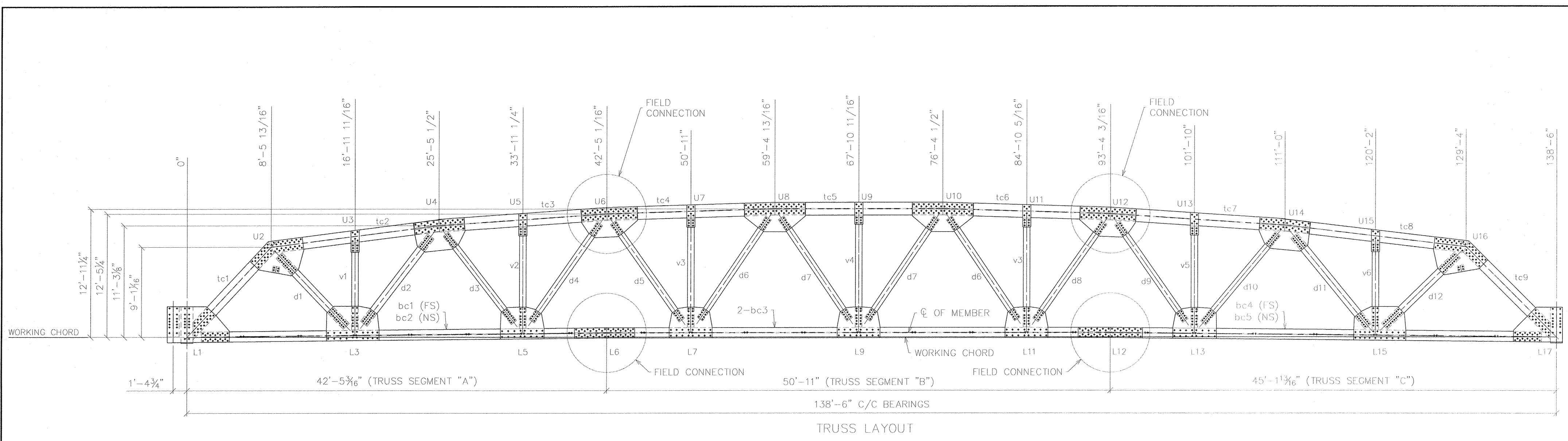


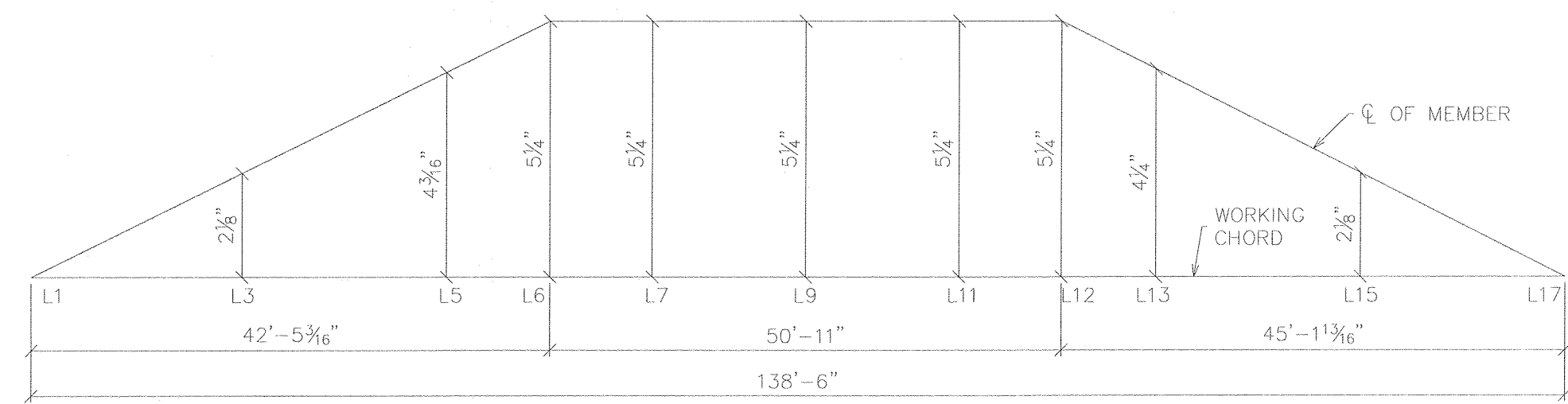
DATE PLOTTED: June 24, 2013

S:\DESIGN\PROJECTS\1622-Cabot\Truss-1385 x 35-Warren.VT over Mad River\Drawings\1622 AS-BUILT 6-24-13.dwg



TRUSS ASSEMBLY NOTES:

1. THE SQUARE CORNER OF THE LOWER GUSSET PLATES ARE TO FACE TOWARDS THE ϕ OF THE TRUSS.
2. SHEETS 9a-9c CONTAIN THE DRAWINGS FOR THE COMPLETED TRUSSES L&R.
3. THE TRUSS LAYOUT IS SHOWN IN THE "UNLOADED" POSITION.
4. FOR FIELD BOLT QUANTITIES AND LENGTHS, SEE SHEET 9a.
5. THE SHOP BOLT CHARTS ARE SHOWN ON SHEETS 9a-9c.
6. ASSEMBLY DRAWINGS PROVIDE THE MAXIMUM NUMBER OF SHIMS PERMITTED.
7. TRUSS MEMBERS ARE DESIGNED FOR A $\frac{1}{8}$ " GAP BETWEEN MEMBERS ($\frac{1}{4}$ " MAX) AT COMPLETE FIT UP.



RECORD DWGS
AS FABRICATED
6/24/13

SYMBOLS & ABBREVIATIONS

ES: EACH SIDE	NS: NEAR SIDE
EQ: EQUAL	FS: FAR SIDE
CL: CENTERLINE	WP: WORK POINT
REF: REFERENCE	GA: GAUGE
CHK: CHECK	ID: INSIDE DIAMETER
O\O: OUT TO OUT	OD: OUTSIDE DIAMETER
C\C: CENTER TO CENTER	BR: BEARING
F\F: FACE TO FACE	TYP: TYPICAL
DA: DIAMETER	UNO: UNLESS NOTED OTHERWISE
R: RADIUS	ASIT: ABUTMENT
	T&B: TOP & BOTTOM

DIST. BY: **CONTECH** CONSTRUCTION PRODUCTS INC.
FAB. BY: **U.S. BRIDGE** BRIDGING AMERICA SINCE 1916

SUBMITTAL LOG	DATE	NO.	DATE	REVISIONS	BY:
INITIAL SUBMITTAL	12/18/12	1	5/15/13	FLOOR BEAM END PLATES WAS 1" THK	TLB
RESUBMITTAL NO. 2	2/5/13	2	5/15/13	ADDED 2" DIA. RAT HOLES IN fb1 & fb9	TLB
CUSTOMER APPROVAL	2/13/13	3	5/15/13	CHANGED WELD WAS 3/16" ALL AROUND	TLB
SHOP REVIEW	-	4	5/15/13	CHANGED BOLT PATTERN	TLB
PRE FAB MTG	-	5	5/15/13	WAS 2" EDGE DISTANCE	TLB
APPROVED FOR FAB	2/28/13	6	6/3/13	DIMENSIONAL ERRORS	TLB

00000001.jpg

TOWN OF WARREN, VT COUNTY OF WASHINGTON BRIDGE NO.173 REPLACEMENT WARREN, VT	ITEM NO.: PROJECT NO.: BRF 013-4 (14) REFERENCE NO.: BRIDGE NO.: 173 STRUCTURAL FILE NO.:
DESIGN: SAF	DRAW: TLB
REVIEW: SAF/RLI	CHECK: C.JG
SHOP DETAILS	TRUSS ASSEMBLY
USB JOB# 51622	SHEET 7 58