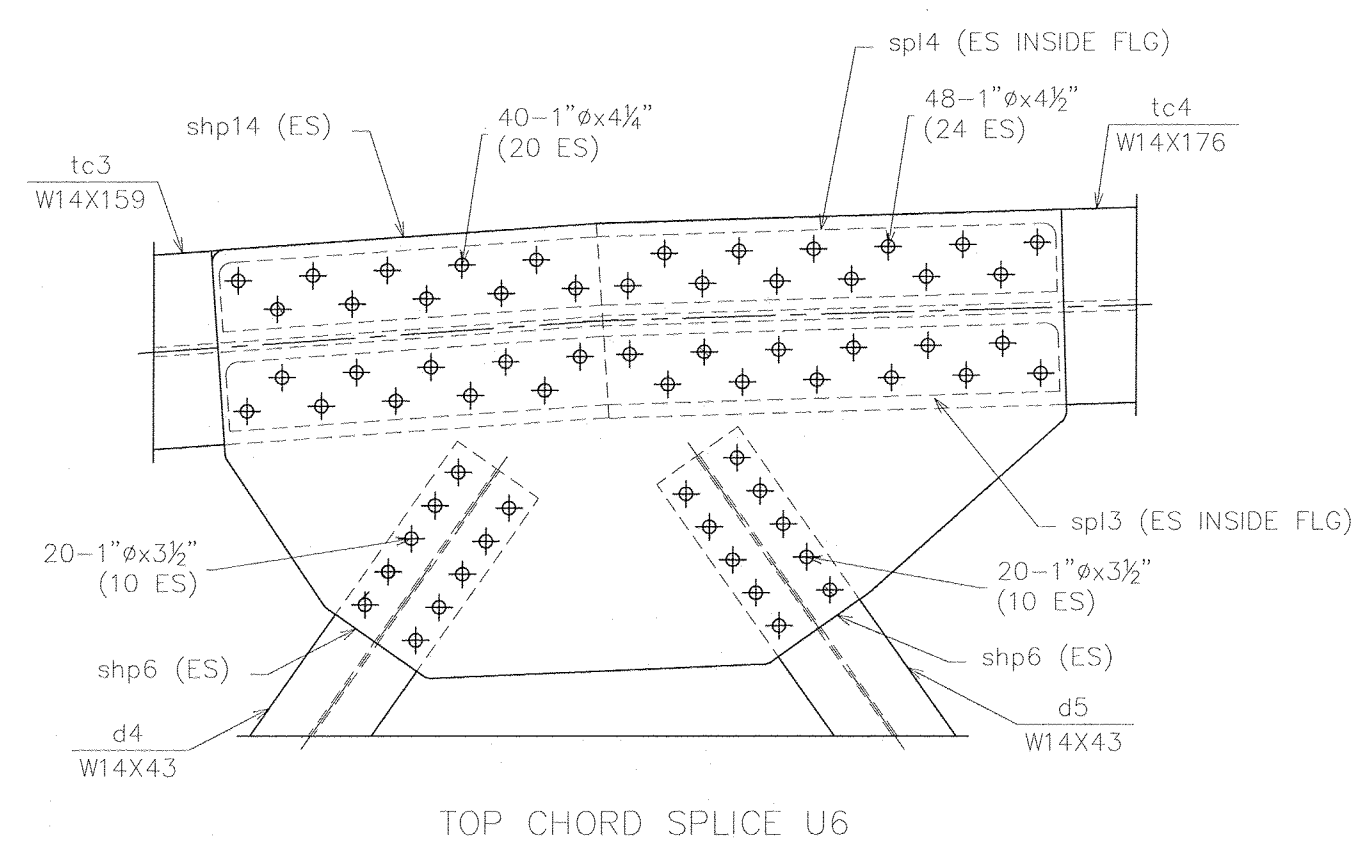
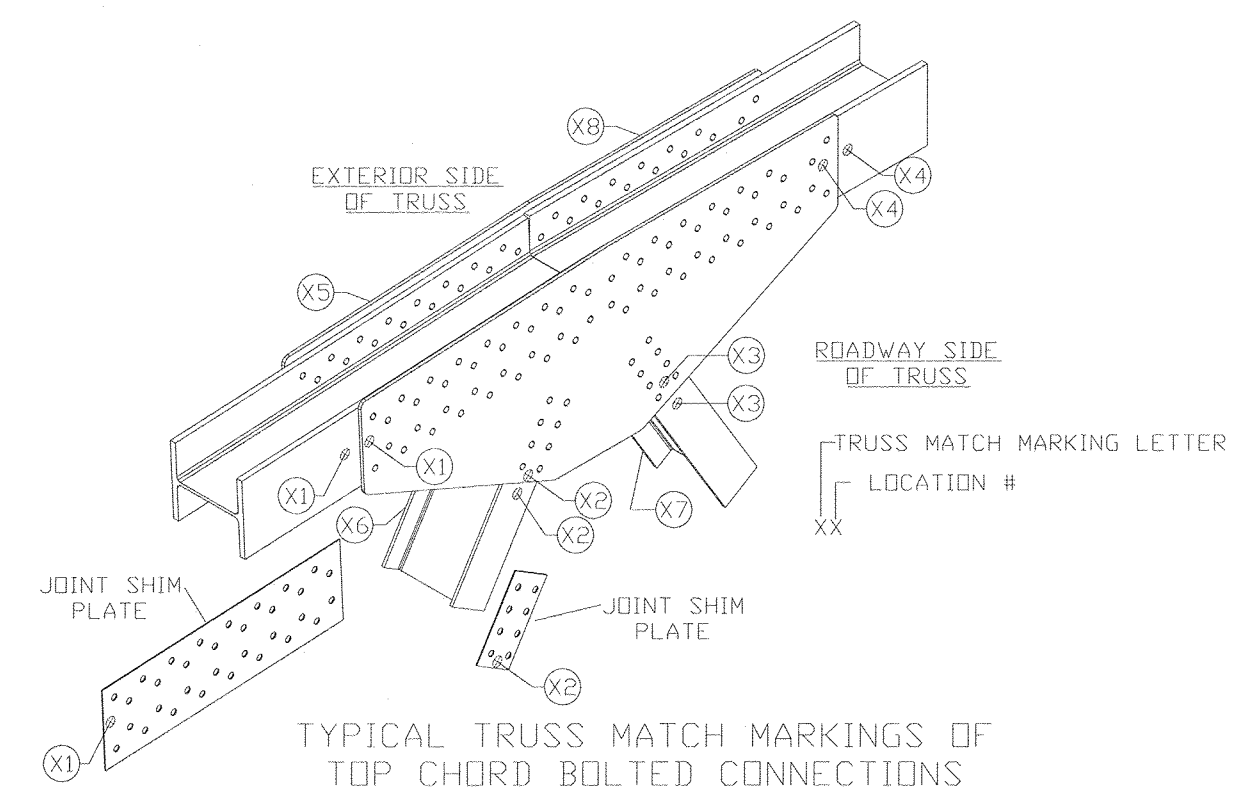


DATE PLOTTED: June 24, 2013

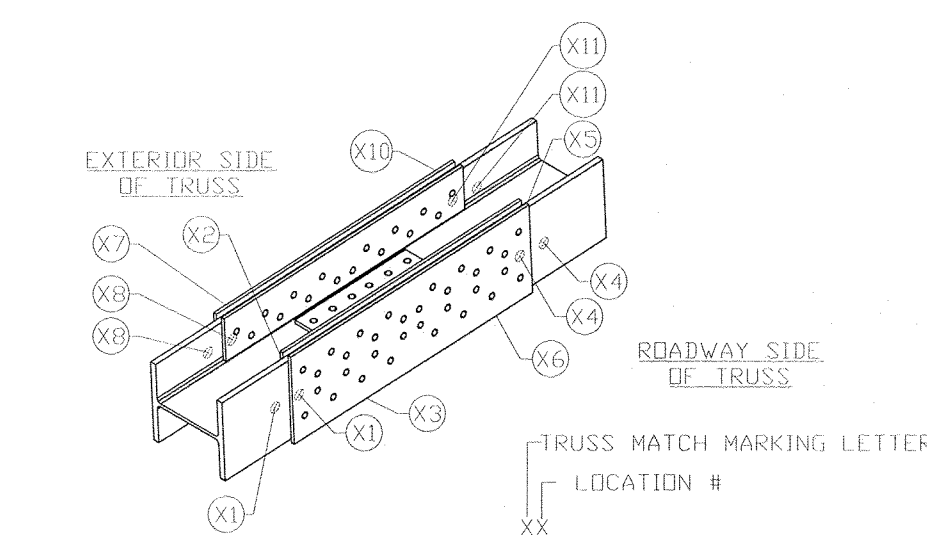
S:\DESIGN\PROJECTS\1622-Civil\Truss-13815 x 35-Warren-VT over Mad River\Drawings\1622 AB-BUILD 6-24-13.dwg



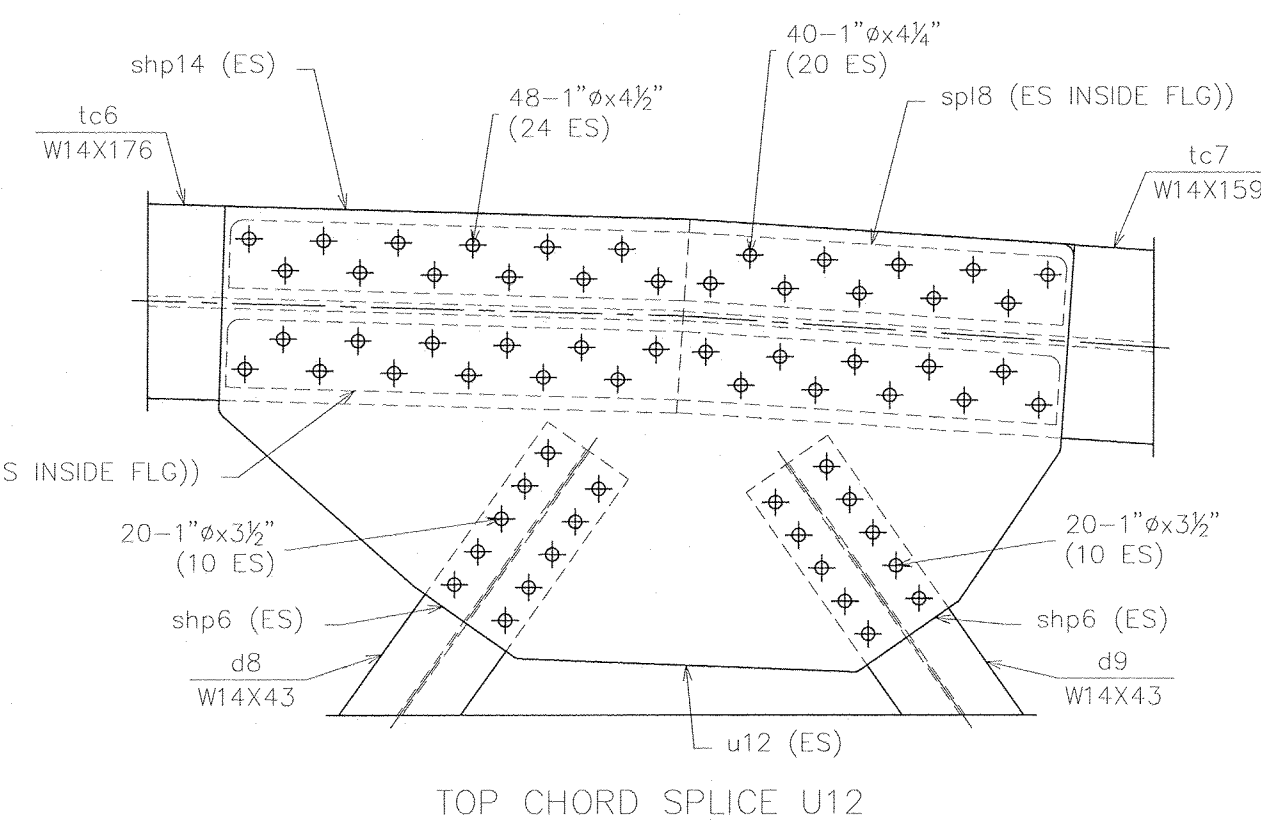
TOP CHORD SPLICE U6



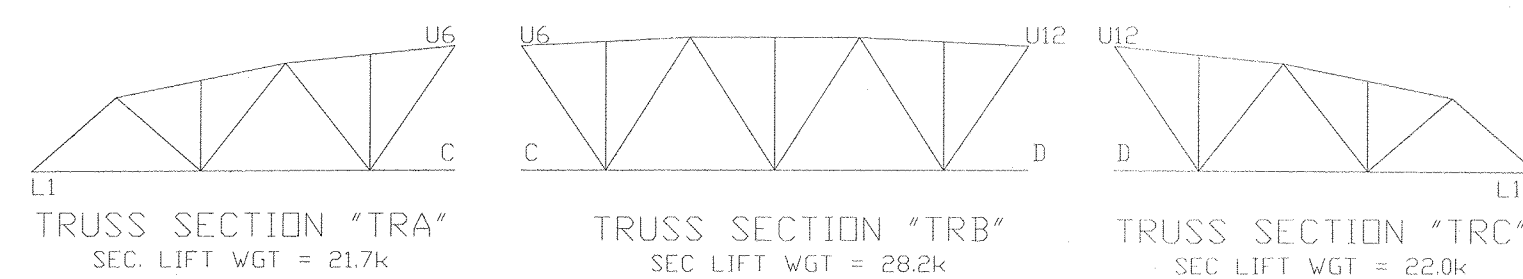
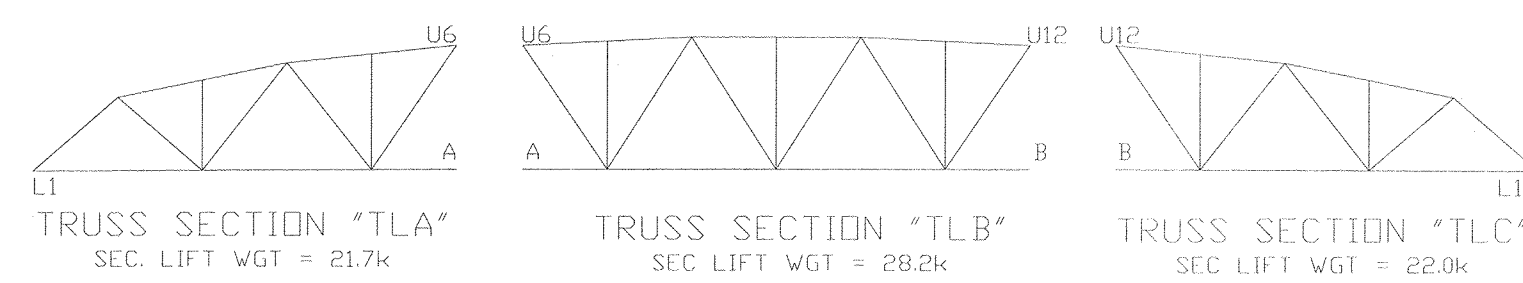
TYPICAL TRUSS MATCH MARKINGS OF TOP CHORD BOLTED CONNECTIONS  
(MARKING SIMILAR ON BOTH SIDES)  
NOTE: SEE FABRICATION DETAILS OF EACH JOINT TO VERIFY NEED FOR JOINT SHIM PLATES.



TYPICAL TRUSS MATCH MARKINGS OF BOTTOM CHORD BOLTED CONNECTIONS  
(MARKING SIMILAR ON BOTH SIDES)  
NOTE: SEE FABRICATION DETAILS OF EACH JOINT TO VERIFY NEED FOR JOINT SHIM PLATES.



TOP CHORD SPLICE U12



TRUSS MATCH MARKINGS  
NOTE - MATCH MARK LETTERS STAMPED ON BOTTOM CHORD CHANNELS & GUSSET PLATES AT CONNECTIONS WITH 1/2" LETTER STAMPS.

TOTAL LIFTING WGT. PER TRUSS = 72.9k  
(WGT. INCLUDES BOLTS & 5% FOR GALV.)

NOTE: ALL BOLTS REQUIRE (1) FLAT WASHER, (1) DTI WASHER, AND (1) NUT. ALL BOLTS ARE A325-1 UNO.

RECORD DWGS  
AS FABRICATED

SYMBOLS & ABBREVIATIONS

ES: EACH SIDE	NS: NEAR SIDE
EQ: EQUAL	FS: FAR SIDE
C: CENTERLINE	WP: WORK POINT
REF: REFERENCE	GA: GAUGE
CHK: CHECK	ID: INSIDE DIAMETER
O/O: OUT TO OUT	OD: OUTSIDE DIAMETER
C/C: CENTER TO CENTER	BRG: BEARING
F/V: FACE TO FACE	TYP: TYPICAL
DIA: DIAMETER	UNO: UNLESS NOTED OTHERWISE
R: RADIUS	ABU: ABUTMENT
	T&B: TOP & BOTTOM

DIST. BY:



FAB. BY:



NO.	DATE	REVISIONS	BY
1	5/15/13	FLOOR BEAM END PLATES WAS 1" THK	TLB
2	5/15/13	ADDED 2" DIA. RAT HOLES IN fb1 & fb9	TLB
3	5/15/13	CHANGED WELD WAS 3/8" ALL AROUND	TLB
4	5/15/13	CHANGED BOLT PATTERN	TLB
5	5/15/13	WAS 2" EDGE DISTANCE	TLB
6	6/3/13	DIMENSIONAL ERRORS	TLB

00000001.jpg

TOWN OF WARREN, VT  
COUNTY OF WASHINGTON  
BRIDGE NO.173 REPLACEMENT  
WARREN, VT

ITEM NO.:  
PROJECT NO.: BRP 013-4 (14)  
REFERENCE NO.:  
BRIDGE NO.: 173  
STRUCTURAL FILE NO.:

DESIGN: SAF	DRAW: TLB	REVIEW: SAF/RLI	CHECK: C/JG	SHEET 5
CONSTRUCTION PLANS		FIELD ASSEMBLY		58
USB JOB# 51622			TOTAL	