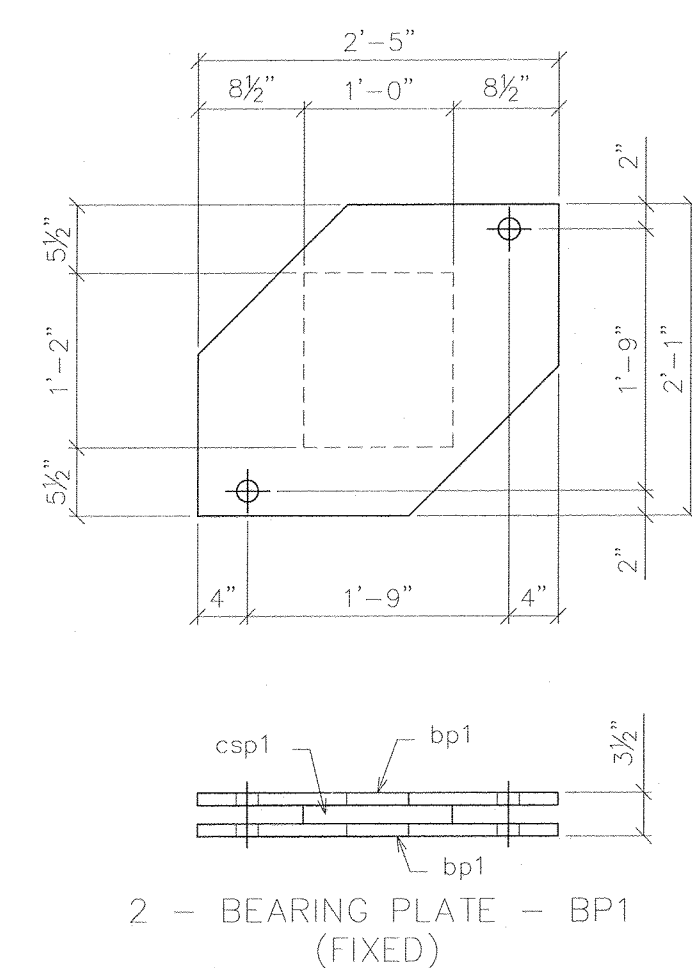
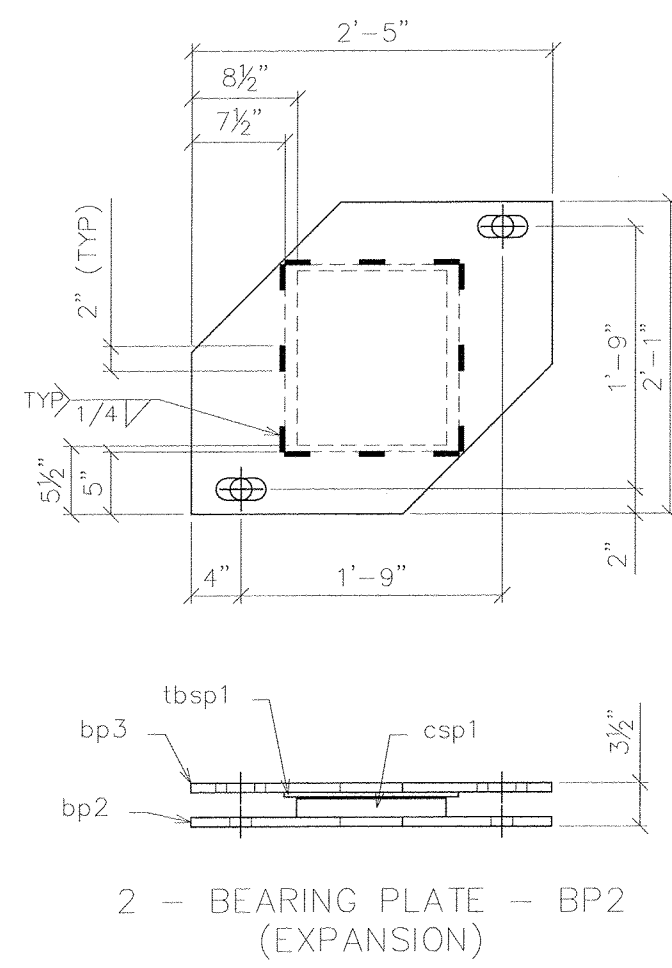


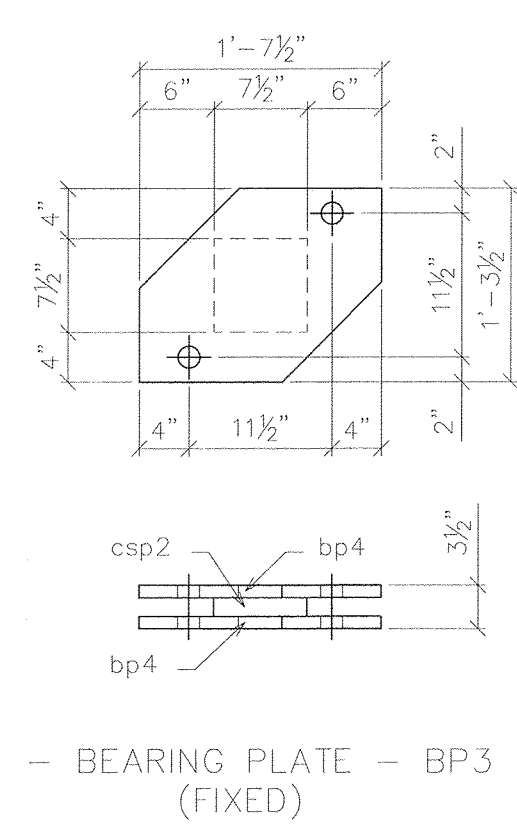
DATE PLOTTED June 24, 2013



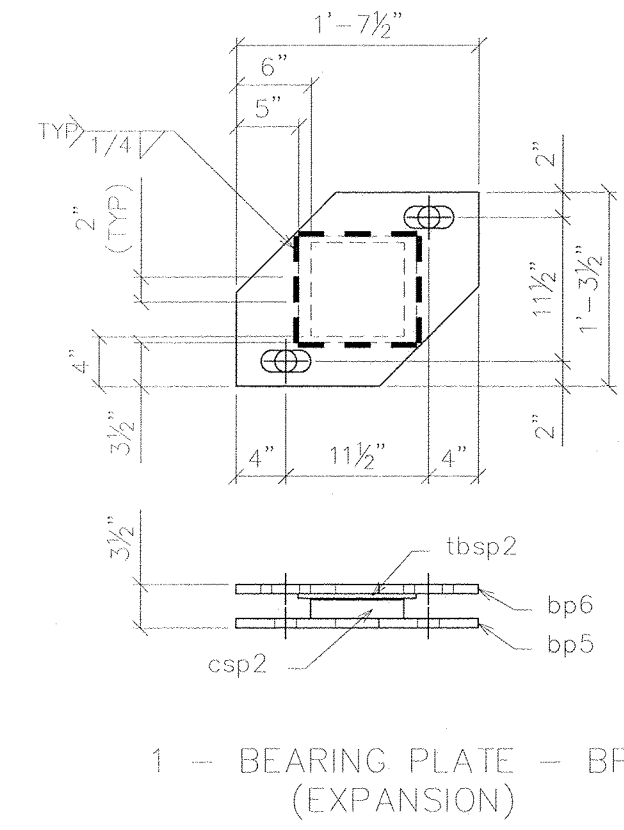
2 - BEARING PLATE - BP1 (FIXED)



2 - BEARING PLATE - BP2 (EXPANSION)

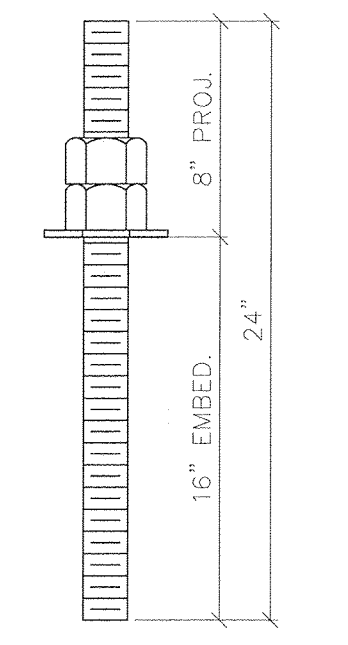


1 - BEARING PLATE - BP3 (FIXED)

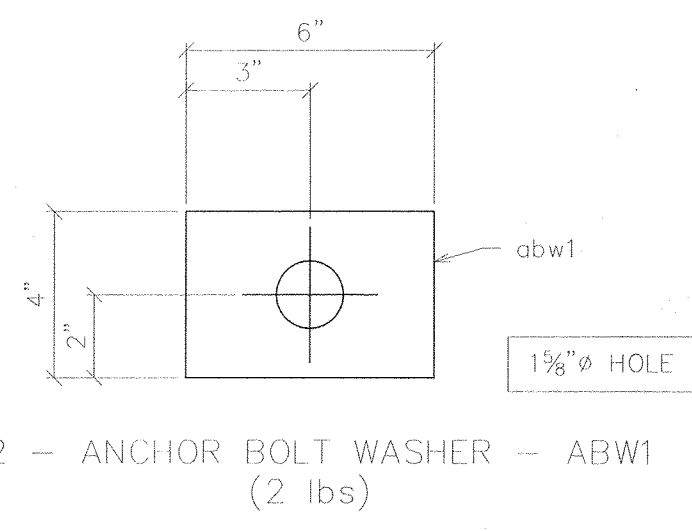


1 - BEARING PLATE - BP4 (EXPANSION)

MATERIAL SCHEDULE							
PC	QTY	PN	FAMILY	PROFILE	LENGTH	GRADE	WGT EACH (lb) TOTAL (lb)
PART NO.=BP1 QTY=2 FINISH=GALV TOTAL WGT=796.60(lb)							
2		bp1	BEARING PLATE	Plate 1"x2'-1"	2'-5"	STEEL A572-50	163.4 326.8
1		csp1	CON-SLIDE PAD	Plate 1 1/2"x1'-2"	1'-0"	User	71.5 71.5
PART NO.=BP2 QTY=2 FINISH=GALV TOTAL WGT=674.49(lb)							
1		bp2	BEARING PLATE	Plate 3/4"x2'-1"	2'-5"	STEEL A572-50	122.6 122.6
1		bp3	BEARING PLATE	Plate 3/4"x2'-1"	2'-5"	STEEL A572-50	120.9 120.9
1		csp1	CON-SLIDE PAD	Plate 1 1/2"x1'-2"	1'-0"	User	71.5 71.5
1		tbsp1	TRSS BRG SL PL W/20GA SS	Plate 3/8"x1'-2"	1'-3"	STEEL A572-50	22.3 22.3
PART NO.=BP3 QTY=1 FINISH=GALV TOTAL WGT=156.39(lb)							
2		bp4	BEARING PLATE	Plate 1"x1'-3 1/2"	1'-7 1/2"	STEEL A572-50	66.2 132.5
1		csp2	CON-SLIDE PAD	Plate 1 1/2"x7 1/2"	7 1/2"	User	23.9 23.9
PART NO.=BP4 QTY=1 FINISH=GALV TOTAL WGT=130.18(lb)							
1		bp5	BEARING PLATE	Plate 3/4"x1'-3 1/2"	1'-7 1/2"	STEEL A572-50	49.7 49.7
1		bp6	BEARING PLATE	Plate 3/4"x1'-3 1/2"	1'-7 1/2"	STEEL A572-50	48.0 48.0
1		csp2	CON-SLIDE PAD	Plate 1 1/2"x7 1/2"	7 1/2"	User	23.9 23.9
1		tbsp2	TRSS BRG SL PL W/20GA SS	Plate 3/8"x8 1/2"	9 1/2"	STEEL A572-50	8.6 8.6
Total element mass (lb)							130.18
							1757.67



12 - TRUSS ANCHOR BOLT - AB1
1/2" A449
ALL THREAD GALV.
ROD WITH 2 NUTS
& ONE 4"x4"x6" WASHER

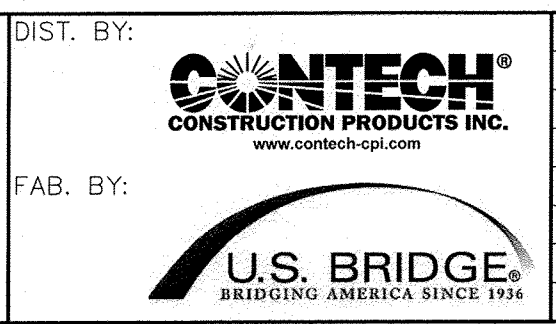


12 - ANCHOR BOLT WASHER - ABW1 (2 lbs)

NOTE: TYPE PF PAD TO BE BONDED TO MASONRY PLATE WITH AN EPOXY ADHESIVE (LORD TWO PART EPOXY ADHESIVE, 310A AND 310B)

RECORD DWGS
AS FABRICATED
6/24/13

SYMBOLS & ABBREVIATIONS
ES: EACH SIDE
EQ: EQUAL
C: CENTERLINE
REF: REFERENCE
CHK: CHECK
O/O: OUT TO OUT
C/C: CENTER TO CENTER
F/V: FACE TO FACE
D/A: DIAMETER
R: RADIUS
NS: NEAR SIDE
FS: FAR SIDE
WP: WORK POINT
GA: GAUGE
ID: INSIDE DIAMETER
OD: OUTSIDE DIAMETER
BRG: BEARING
TYP: TYPICAL
UNO: UNLESS NOTED OTHERWISE
ASUT: ABUTMENT
T&B: TOP & BOTTOM



SUBMITTAL LOG	DATE	NO.	DATE	REVISIONS:	BY:
INITIAL SUBMITTAL	12/18/12	1	5/15/13	FLOOR BEAM END PLATES WAS 1" THK	TLB
RESUBMITTAL NO. 2	2/5/13	2	5/15/13	ADDED 2" DIA. RAT HOLES IN tbt1 & tbt9	TLB
CUSTOMER APPROVAL	2/13/13	3	5/15/13	CHANGED WELD WAS 3/8" ALL AROUND	TLB
SHOP REVIEW	-	4	5/15/13	CHANGED BOLT PATTERN	TLB
PRE FAB MTG	-	5	5/15/13	WAS 2" EDGE DISTANCE	TLB
APPROVED FOR FAB	2/28/13	6	6/3/13	DIMENSIONAL ERRORS	TLB

TOWN OF WARREN, VT
COUNTY OF WASHINGTON
BRIDGE NO.173 REPLACEMENT
WARREN, VT
ITEM NO.:
PROJECT NO.: BRF 013-4 (14)
REFERENCE NO.:
BRIDGE NO.: 173
STRUCTURAL FILE NO.:
DESIGN: SAF DRAW: TLB REVIEW: SAF/RLI CHECK: C.JG
CONSTRUCTION PLANS ABUTMENTS USB JOB# 51622

00000001.jpg
SHEET 4c 58

S:\08SERV\MONT1622-Galv\Truss-138's x 35'-Warren,VT over Mad River\Drawings\1622-AS-BUILT-6-24-13.dwg