

REMOVAL AND DISPOSAL OF GUARDRAIL
 STA 205+50.00 TO STA 206+50.00 LT
 STA 205+50.00 TO STA 206+24.00 RT
 STA 207+53.52 TO STA 210+67.82 LT
 STA 207+34.59 TO STA 208+07.79 RT

BOX BEAM GUARDRAIL
 STA 205+50.00 TO STA 205+78.62 LT
 STA 207+93.10 TO STA 208+97.92 LT
 STA 207+59.90 TO STA 208+40.06 RT

SPECIAL PROVISION (BRIDGE RAILING,
 GALVANIZED 2 RAIL BOX BEAM/CURB MOUNTED)
 STA 206+10.60 TO STA 207+61.10 LT
 STA 205+77.34 TO STA 207+27.90 RT

SPECIAL PROVISION (GUARDRAIL APPROACH
 SECTION, GALVANIZED 2 RAIL BOX BEAM)
 STA 205+78.62 TO STA 206+10.60 LT
 STA 205+50.00 TO STA 205+77.34 RT
 STA 207+61.10 TO STA 207+93.10 LT
 STA 207+27.90 TO STA 207+59.90 RT

MANUFACTURED TERMINAL SECTION,
 TANGENT
 STA 208+97.92 TO STA 209+11.93 LT

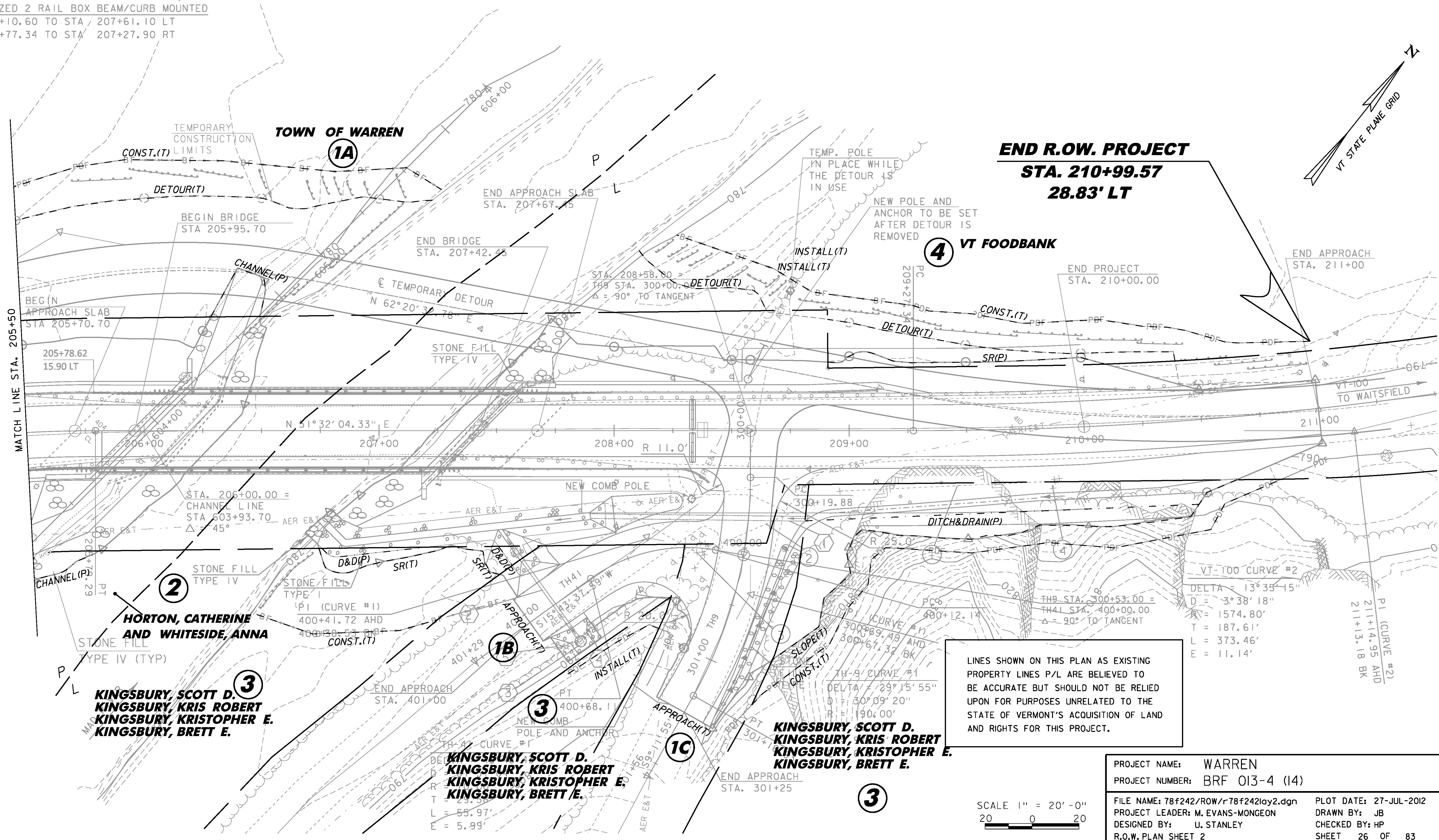
COLD PLANING, BITUMINOUS PAVEMENT
 STA 210+00.00 TO STA 211+00.00

RELOCATE MAILBOX, SINGLE SUPPORT
 TH 41 STA 400+14.00 RT

RELOCATE MAILBOX, MULTIPLE SUPPORT
 TH 9 STA 300+76.00 RT (2 MAILBOX)

DELINEATOR WITH STEEL POST
 VT 100 STA 209+12.00 LT (BLUE)
 VT 100 STA 208+40.00 RT (GREEN)
 TH 9 STA 300+35.38 25.2 FT LT (WHITE)
 TH 9 STA 300+45.38 67.1 FT RT (WHITE)
 TH 41 STA 400+87.00 19.2 FT LT (WHITE)
 TH 41 STA 400+87.00 17.8 FT RT (WHITE)
 TH 41 STA 400+78.65 16.1 FT LT (WHITE)
 TH 41 STA 400+97.00 15.3 FT LT (WHITE)

SOLID ROCK EXCAVATION
 VT 100 STA 209+00 TO STA 210+00 RT



**END R.O.W. PROJECT
 STA. 210+99.57
 28.83' LT**

4 VT FOODBANK

**2 HORTON, CATHERINE
 AND WHITESIDE, ANNA**

**3 KINGSBURY, SCOTT D.
 KINGSBURY, KRIS ROBERT
 KINGSBURY, KRISTOPHER E.
 KINGSBURY, BRETT E.**

**3 KINGSBURY, SCOTT D.
 KINGSBURY, KRIS ROBERT
 KINGSBURY, KRISTOPHER E.
 KINGSBURY, BRETT E.**

**3 KINGSBURY, SCOTT D.
 KINGSBURY, KRIS ROBERT
 KINGSBURY, KRISTOPHER E.
 KINGSBURY, BRETT E.**

LINES SHOWN ON THIS PLAN AS EXISTING
 PROPERTY LINES P/L ARE BELIEVED TO
 BE ACCURATE BUT SHOULD NOT BE RELIED
 UPON FOR PURPOSES UNRELATED TO THE
 STATE OF VERMONT'S ACQUISITION OF LAND
 AND RIGHTS FOR THIS PROJECT.

PROJECT NAME:	WARREN	FILE NAME:	78f242/ROW/r78f242lay2.dgn	PLOT DATE:	27-JUL-2012
PROJECT NUMBER:	BRF 013-4 (14)	PROJECT LEADER:	M. EVANS-MONGEON	DRAWN BY:	JB
		DESIGNED BY:	U. STANLEY	CHECKED BY:	HP
		R.O.W. PLAN SHEET 2		SHEET	26 OF 83

SCALE 1" = 20'-0"
 20 0 20