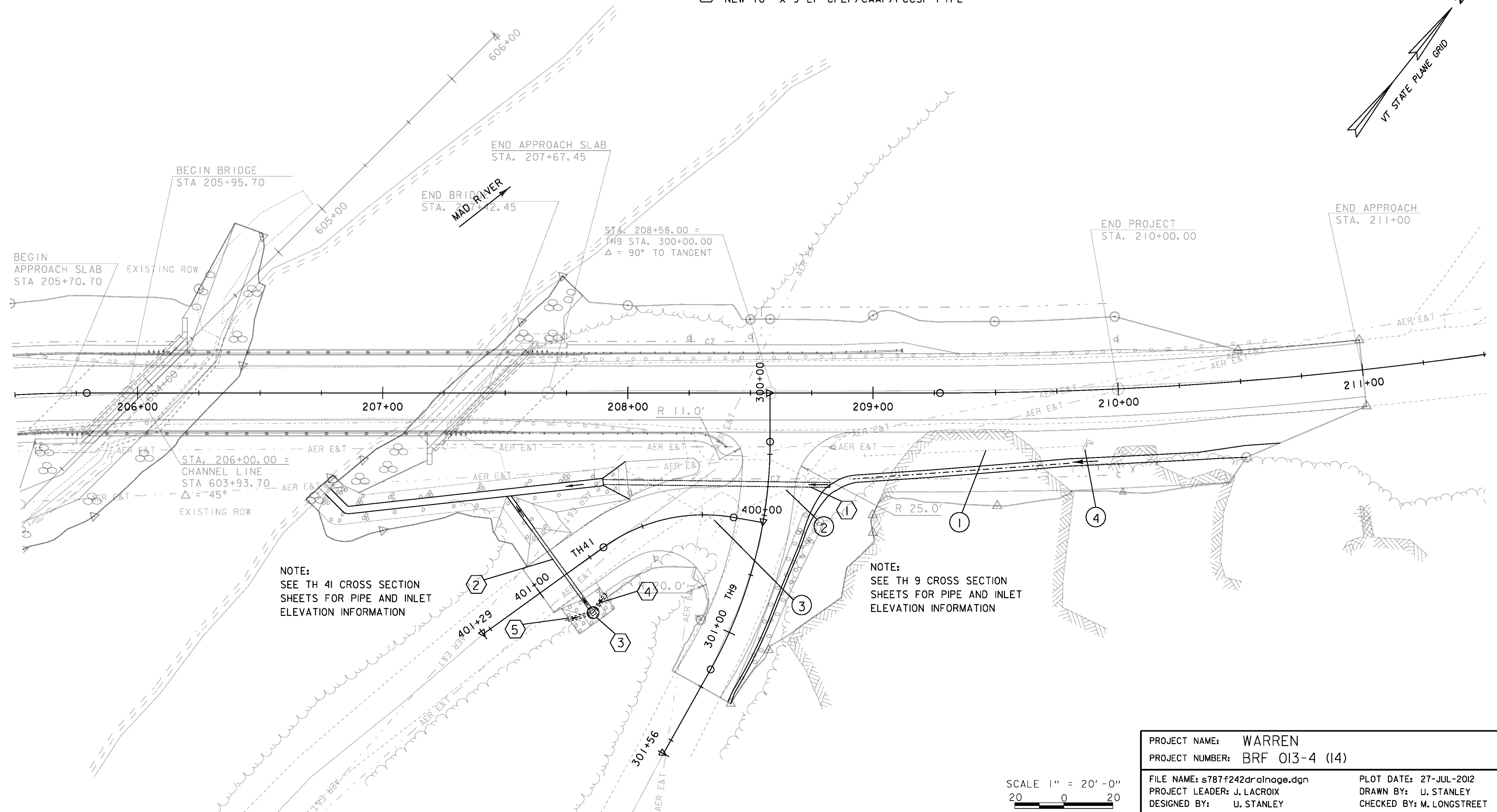
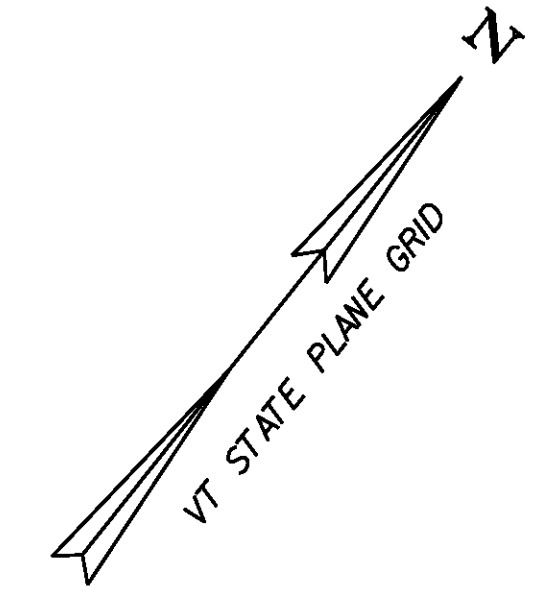


- ① STA. 300+35.38 25.2' LT TO STA. 300+45.38 67.1' RT  
NEW 24" x 93 LF CPEP/CAAP/PCCSP PIPE
- ② STA. 400+87.00 22.9' LT TO STA. 400+87 17.8' RT  
NEW 18" x 41 LF CPEP/CAAP/PCCSP PIPE
- ③ STA. 400+87.00 19.2' LT  
NEW PRECAST REINFORCED CONCRETE CATCH  
BASIN WITH CAST IRON GRATE (TYPE B)
- ④ STA. 400+78.65 16.1' LT TO 400+85.66 18.6' LT  
NEW 18" x 8 LF CPEP/CAAP/PCCSP PIPE
- ⑤ STA. 400+88.63 18.6 LT TO STA. 400+97.00 15.3 LT  
NEW 18" x 9 LF CPEP/CAAP/PCCSP PIPE

- ① STA. 208+96.06 25.7' RT TO STA. 209+86.06 22.7' RT  
REMOVE 91.8 LF EXISTING PIPE
- ② STA. 300+29.27 27.3' LT TO STA. 300+55.00 17.5' RT  
REMOVE 51.8 LF EXISTING PIPE
- ③ STA. 400+20.06 2.0' LT TO STA. 400+48.38 23.3' RT  
REMOVE 40.8' EXISTING PIPE
- ④ STA. 209+86.06 22.8' RT  
REMOVE EXISTING CONCRETE HEAD WALL



NOTE:  
SEE TH 4I CROSS SECTION  
SHEETS FOR PIPE AND INLET  
ELEVATION INFORMATION

NOTE:  
SEE TH 9 CROSS SECTION  
SHEETS FOR PIPE AND INLET  
ELEVATION INFORMATION

PROJECT NAME: WARREN	PLLOT DATE: 27-JUL-2012
PROJECT NUMBER: BRF 013-4 (14)	DRAWN BY: U. STANLEY
FILE NAME: s787f242drainage.dgn	CHECKED BY: M. LONGSTREET
PROJECT LEADER: J. LACROIX	SHEET 20 OF 83
DESIGNED BY: U. STANLEY	
DRAINAGE LAYOUT SHEET	

SCALE 1" = 20'-0"  
20 0 20