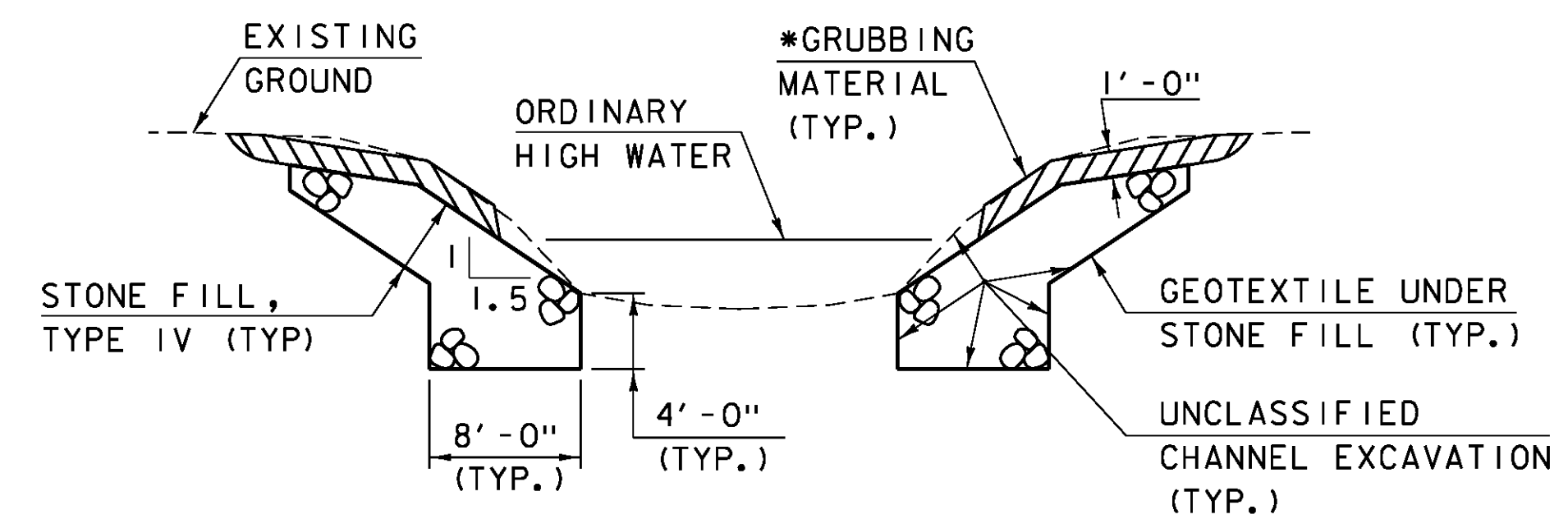


COFFERDAM AND EARTHWORK SECTION
(NOT TO SCALE)

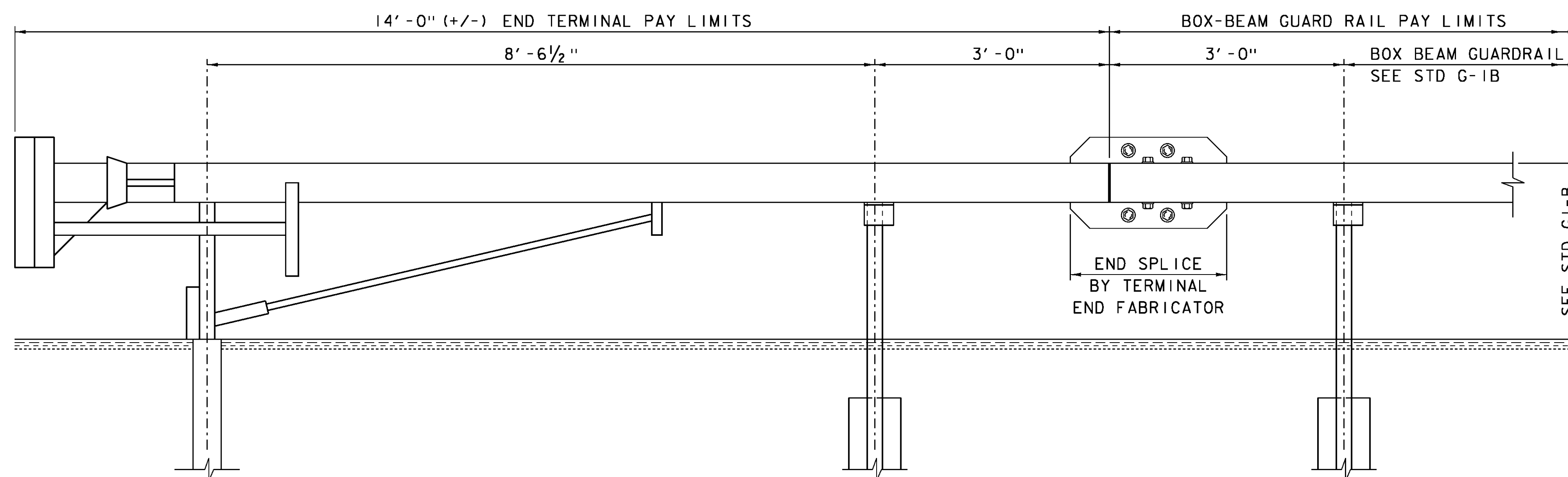


TYPICAL CHANNEL SECTION
NOT TO SCALE

* GRUBBING MATERIAL SHALL NOT BE PLACED ON THE STONE FILL AREA IN THE AREA UNDER THE BRIDGE, WHENEVER CHANNEL SLOPE INTERSECTS ROADWAY SUBBASE, GRUBBING MATERIAL SHALL BEGIN AT THE BOTTOM OF SUBBASE.

COFFERDAM NOTES

1. COFFERDAM DIMENSIONS TO BE DETERMINED BY THE CONTRACTOR.
2. THE PAY LIMITS OF EITHER "COFFERDAM EXCAVATION, EARTH" AND "COFFERDAM EXCAVATION, ROCK" SHALL BE 2'-0" OUTSIDE THE PERIMETER OF THE FOOTING AND FROM BOTTOM OF EXCAVATION UP TO THE EXISTING GROUND OR BOTTOM OF SUBBASE, WHICHEVER IS LOWER.
3. IF A COFFERDAM IS CONSTRUCTED WHICH IS LARGER THAN THE INDICATED COFFERDAM EXCAVATION PAY LIMITS, PAYMENT FOR ALL UNCLASSIFIED CHANNEL EXCAVATION, INCLUDING THAT PORTION WHICH IS INSIDE THE COFFERDAM BUT OUTSIDE THE COFFERDAM PAY LIMITS, WILL BE MADE AT THE CONTRACT UNIT PRICE FOR UNCLASSIFIED CHANNEL EXCAVATION. NO MEASUREMENT AND PAYMENT WILL BE MADE FOR COFFERDAM EXCAVATION AND GRANULAR BACKFILL FOR STRUCTURES OUTSIDE THE PAY LIMITS DEFINED IN NOTE 2.



MANUFACTURED TERMINAL SECTION, TANGENT DETAIL

SCALE 1" = 1'-0"

PROJECT NAME: WARREN
PROJECT NUMBER: BRF 013-4 (14)

FILE NAME: s78f242+yp.dgn
PROJECT LEADER: J. LACROIX
DESIGNED BY: U. STANLEY
TYPICAL SECTIONS & DETAILS

PLOT DATE: 27-JUL-2012
DRAWN BY: G. ROKES
CHECKED BY: U. STANLEY
SHEET 8 OF 83